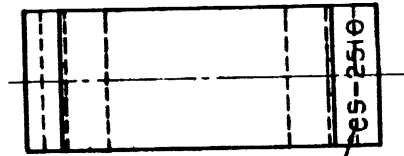


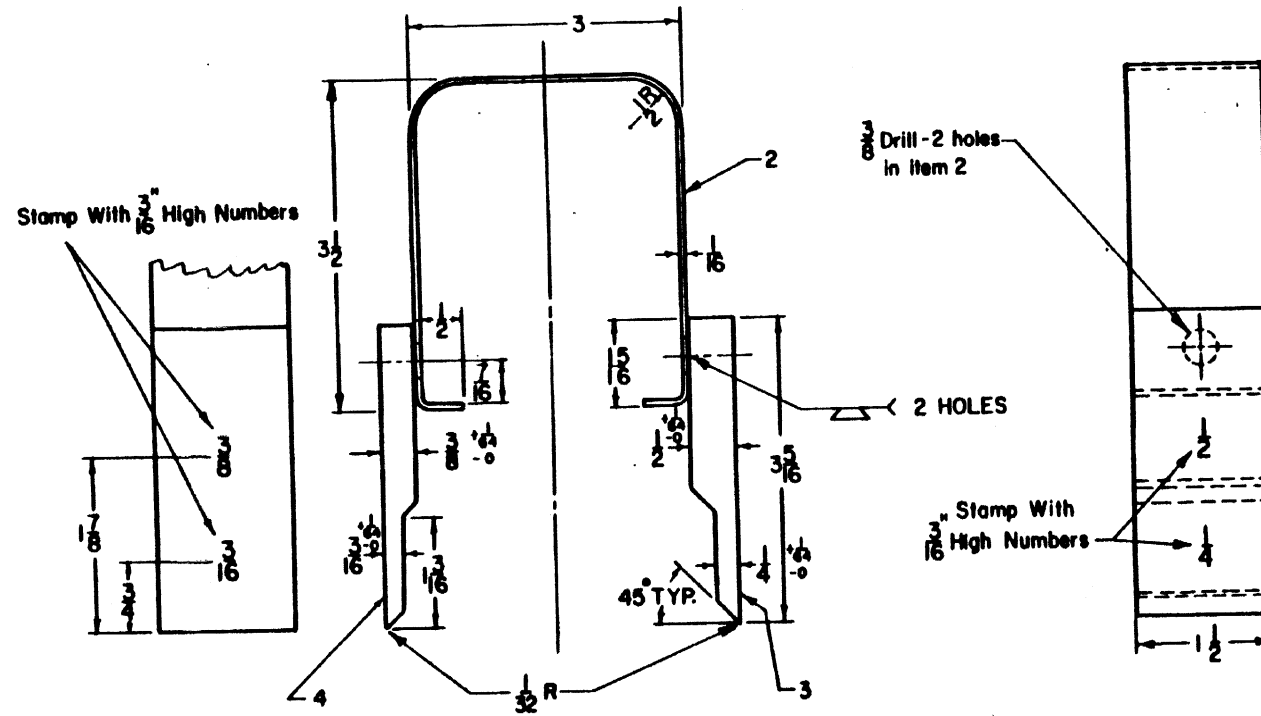
NO	ITEM	REQ	REF ACCT NO
1	TEST GAGE ASSEMBLY		45-300017
2	HANDLE, 10- 1/2 x 1-1/2 x 1/16	1	
3	GAGE, 3-5/16 x 1-1/2 x 1/2	1	
4	GAGE, 3-5/16 x 1-1/2 x 3/8	1	




Stamp With $\frac{3}{16}$ " High Letters & Numbers

NOTES:

- Items 2, 3 & 4 to be of C.R. 1020 steel.
- Items 3 & 4 to be cyanide hardened 0.010" to 0.015" deep.
- Complete assembly to be chrome plated.



SHEET 1


CONRAIL

CS-2510

STANDARD
SWITCH OBSTRUCTION
 TEST GAGE

JAN. 28, 1962

Approved H. Alexander
CHIEF ENGINEER, CS&N