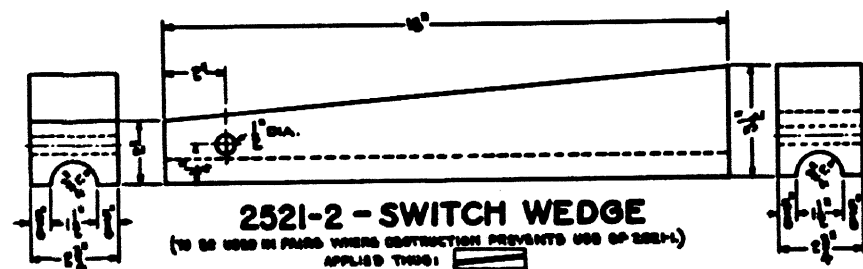



2521-1 - SWITCH WEDGE



2521-2 - SWITCH WEDGE

(TO BE USED IN CASE WHERE OBSTRUCTION PREVENTS USE OF 2521-1)
APPLIED THUS: 

- SPECIFICATION -

MATERIAL: SWEET GUM, DOGWOOD, HORSEBARN, LOCUST, HARD MAPLE, OAK (EXCEPT SO-CALLED SWAMP OR WATER OAKS).
PHYSICAL REQUIREMENTS: SWITCH WEDGES SHALL BE FREE FROM CHECKS, KILN, KNOTS, CHAINS, SPLIT, WANE, GRAIN WITH SLANT GREATER THAN ONE IN TWENTY AND MOISTURE IN EXCESS OF 20%.
DESIGN: SWITCH WEDGES SHALL CONFORM TO THE SHAPES AND SIZES SPECIFIED. ALL DIMENSIONS SHOWN ARE MINIMA.
MANUFACTURE: SWITCH WEDGES SHALL BE STRAIGHT, CUT SQUARE AT THE ENDS, HAVE SMOOTH GROOVES, AND BE SURFACED ON ALL PLANES.

- FIELD NOTES -

WHERE SWITCH POINT OPENING IS SUCH THAT WEDGE 2521-1 CANNOT BE SEVEN BETWEEN STEEL RAIL AND SWITCH POINT A SUFFICIENT DISTANCE TO INSURE A SAFE WEDGE, THAT SURFACE OF WEDGE WHICH IS PLACED AGAINST STEEL RAIL MAY BE CUT BACK TO OBTAIN THE DESIRED RESULTS.
WHERE UNUSUAL OBSTRUCTIONS, SUCH AS BOLT HEADS, ETC, PREVENT THE APPLICATION OF WEDGE 2521-2 AS INTENDED, THE LENGTH MAY BE REDUCED TO NOT LESS THAN NINE INCHES, BY SAWING OFF THE ENDS, TO MEET LOCAL CONDITIONS.
PRECAUTIONS MUST BE TAKEN TO INSURE WEDGES ALTERED TO MEET AN UNUSUAL CONDITION, SUCH AS OUTLINED ABOVE, ARE NOT USED WHILE STANDARD WEDGES 2521-1 OR 2521-2 CAN BE APPLIED.

ACCOUNT REFERENCE NUMBERS

2521-1 02-618500
2521-2 02-618757

SHEET 1

CONRAIL 
STANDARD
SWITCH WEDGES

CS-2521

JUL 27, 1977

Approved: 
Chief Engineer C&S