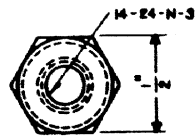
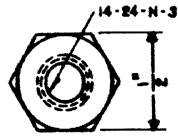


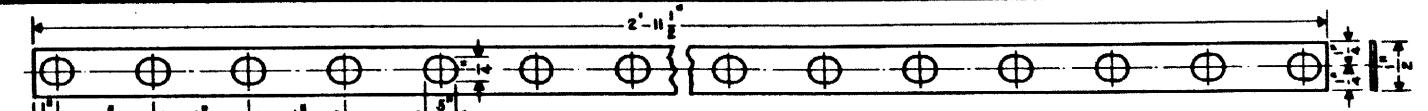
40104 WASHER.
A.A.R. 10708
02-618070



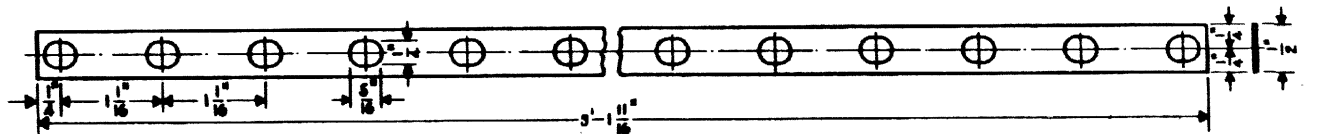
40106 BINDING NUT.
A.A.R. 10706
02-318760



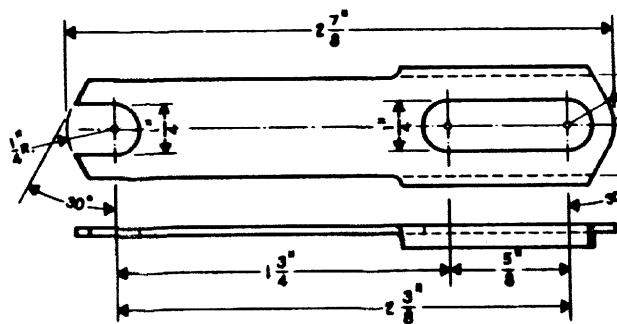
40107 CLAMP NUT.
A.A.R. 10707
02-318803



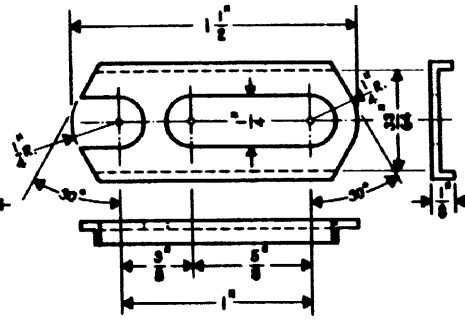
40102 CONNECTOR BUS. FOR 36 TERMINALS
HALF-HARD COPPER NO. 18 A.W.G. (NICKEL OR CHROMIUM PLATED)
SIMILAR TO A.A.R. 10766
02-557252



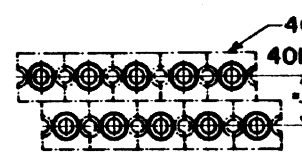
40103 CONNECTOR BUS. FOR 36 TERMINALS
HALF-HARD COPPER NO. 18 A.W.G. (NICKEL OR CHROMIUM PLATED)
SIMILAR TO A.A.R. 10766



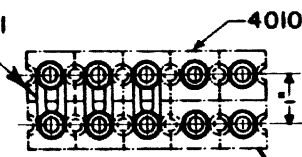
40109 CONNECTOR.
HALF-HARD COPPER NO. 18 A.W.G. (NICKEL OR CHROMIUM PLATED)
A.A.R. 10762
02-149753



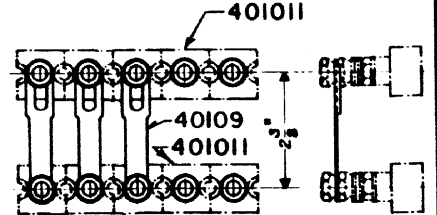
401010 CONNECTOR.
HALF-HARD COPPER NO. 18 A.W.G. (NICKEL OR CHROMIUM PLATED)
A.A.R. 10761
02-150009



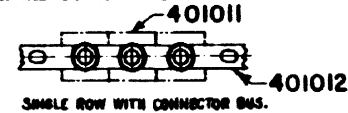
STAGGERED FOR THROUGH WIRE CONNECTIONS TO SINGLE POSTS.



FACE TO FACE FOR USE WITH 1 INCH CONNECTORS.



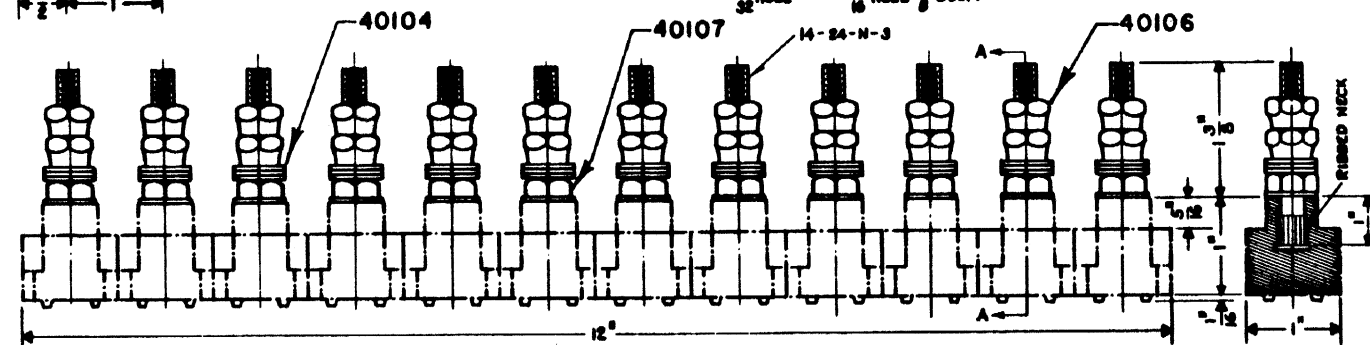
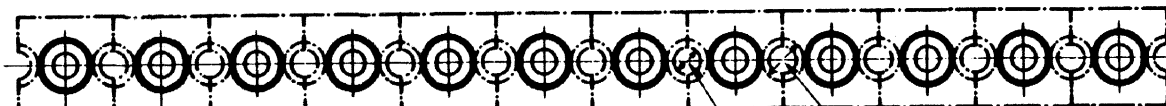
SPACED FOR 2 1/2 INCH CONNECTORS.



SINGLE ROW WITH CONNECTOR BUS.


NOTE:

- MATERIAL FOR TERMINAL BLOCKS, WASHERS, NUTS AND BINDING POSTS SHALL BE IN ACCORDANCE WITH A.A.R. 516 SEC. SPECIFICATIONS NO. 183-64, PART 155.



401011 MULTIPLE UNIT TERMINAL BLOCK. COMPLETE
A.A.R. 10544
02-048797

SHEET 1

CONRAIL  **CS-4010**

STANDARD
TERMINAL BLOCKS
MULTIPLE UNIT

JUL. 8, 1963

Approved *H. Alexander*
Chief Engineer, C.B.S.