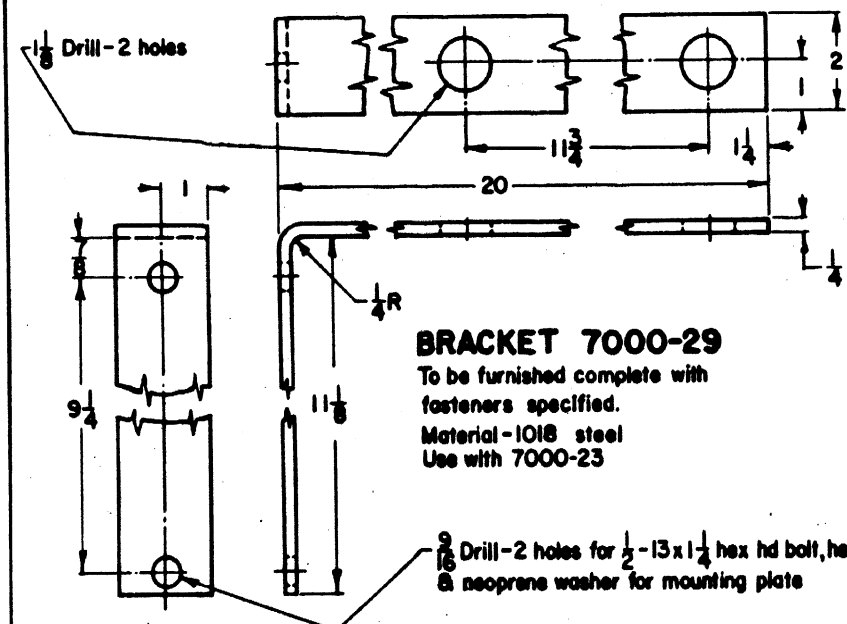


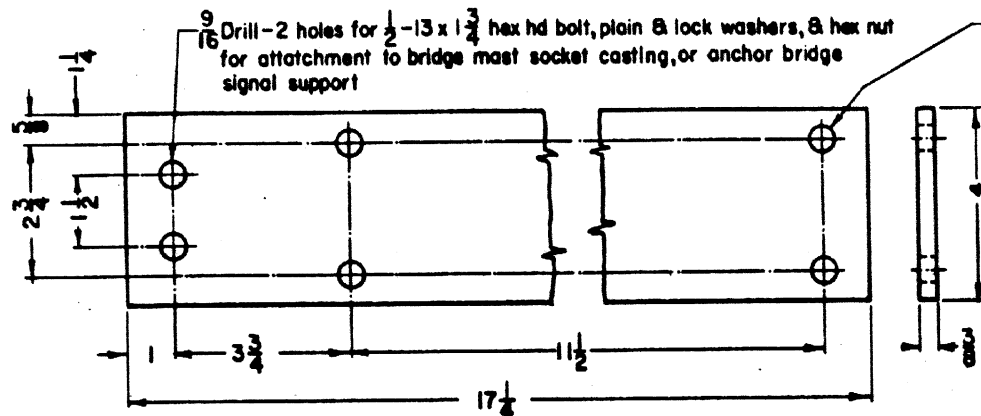
BRACKET FOR 5" MAST 7000-28
BRACKET FOR 4" MAST 7000-32

To be furnished complete as shown, with fasteners specified. Material - 1018 steel. Use bracket for mounting number plates and markers back to back.



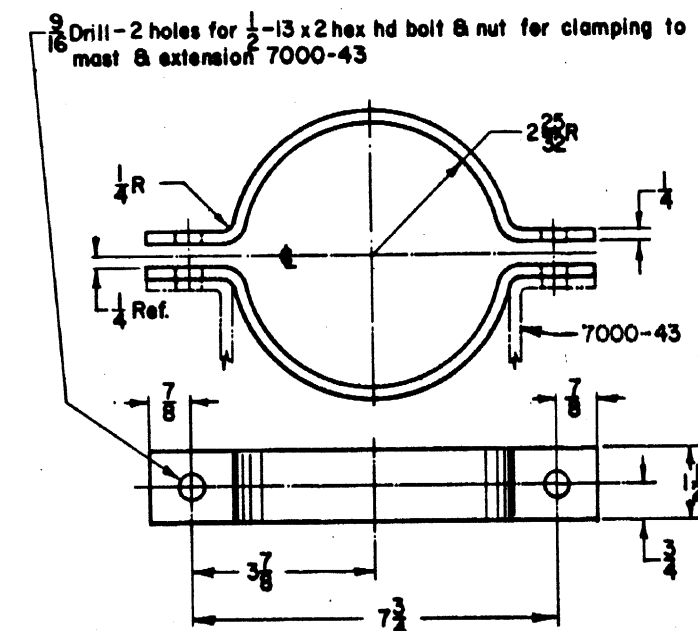
BRACKET 7000-29

To be furnished complete with fasteners specified. Material - 1018 steel Use with 7000-23



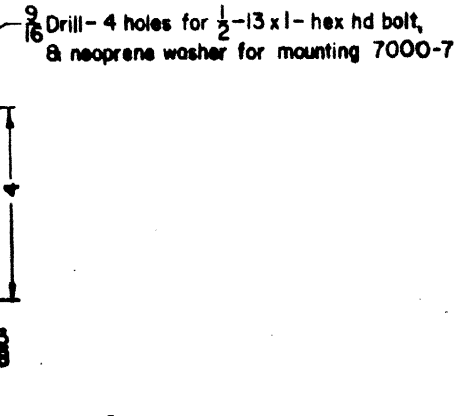
BRACKET FOR GRADE MARKER 7000-45

To be furnished complete as shown, including fasteners specified. Material - 1018 steel



CLAMP 7000-41 FOR 5" MAST

To be furnished complete as shown, with fasteners specified. Material - 1018 steel Use with 7000-23 and -43



EXTENSION 7000-43

To be furnished complete as shown, in pairs, with fasteners specified. Material - 1018 steel Use with 7000-41

SEE NOTES ON SHEET 1

SHEET 5
 CONT'D ON SH 6

CONRAIL



CS-7000

STANDARD
**SIGNS AND MARKERS
 MOUNTING BRACKETS**

OCT. 28, 1976