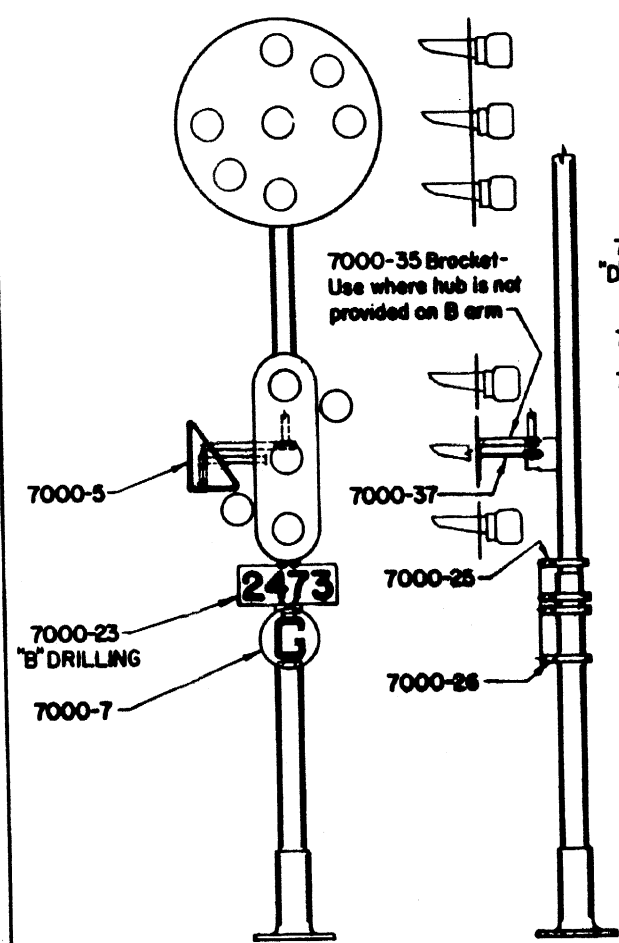
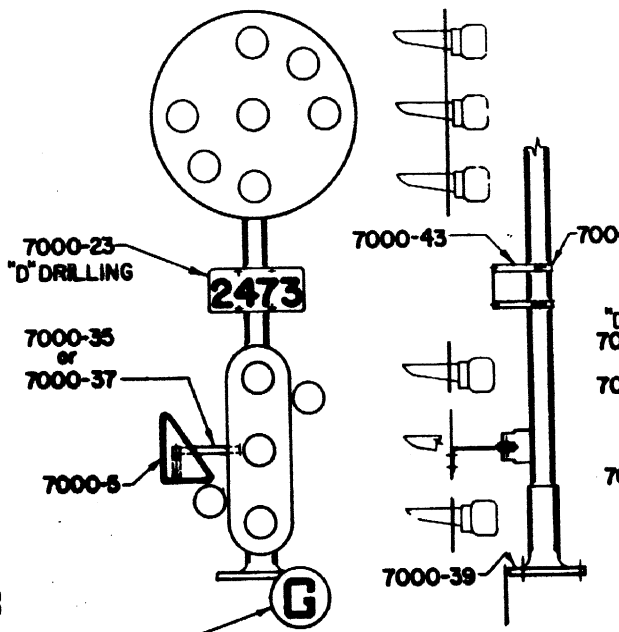


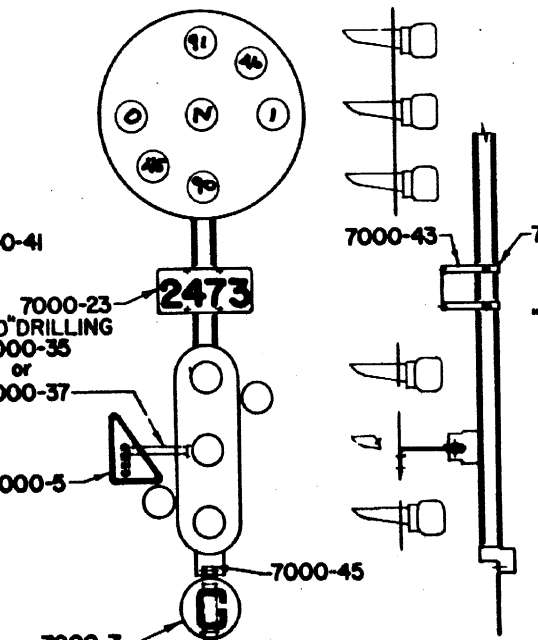
Lower unit



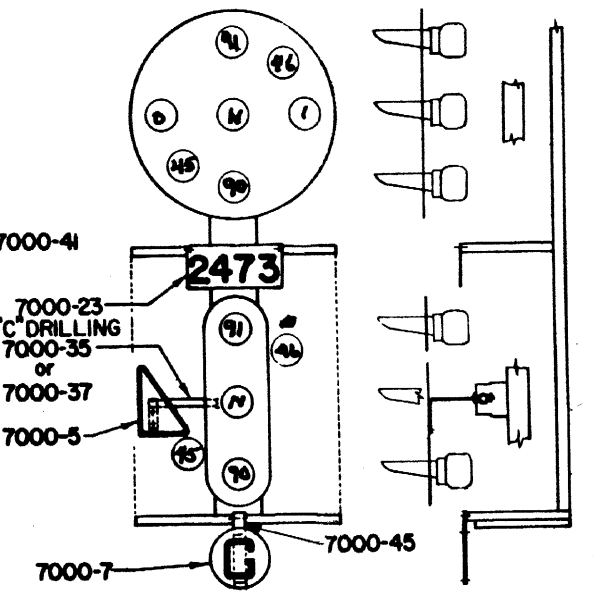
GROUND MAST MOUNTING



CANTILEVER BRIDGE MOUNTING




BRIDGE MAST MOUNTING



ANCHOR BRIDGE MOUNTING

SEE NOTES ON SHEET 1

SHEET 7  
CONT'D ON SH 8

CONRAIL  CS-7000

STANDARD

**SIGNS AND MARKERS**  
MOUNTING OF NUMBER PLATES, SPEED  
LIMIT MARKERS, AND GRADE MARKERS  
WITH POSITION LIGHT SIGNALS

OCT. 28, 1976