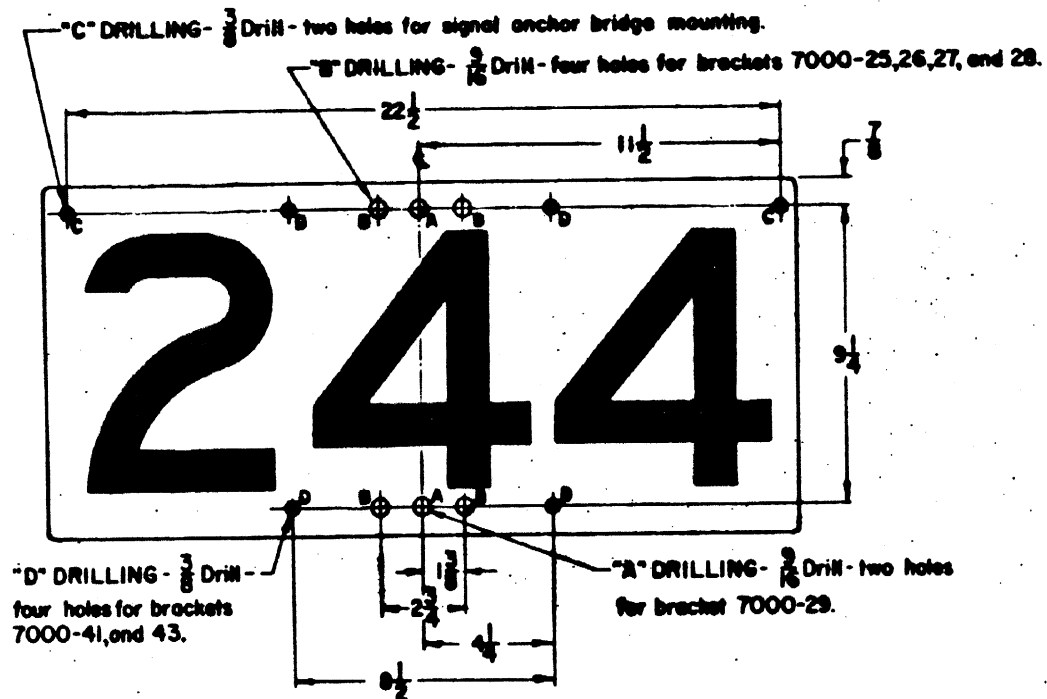


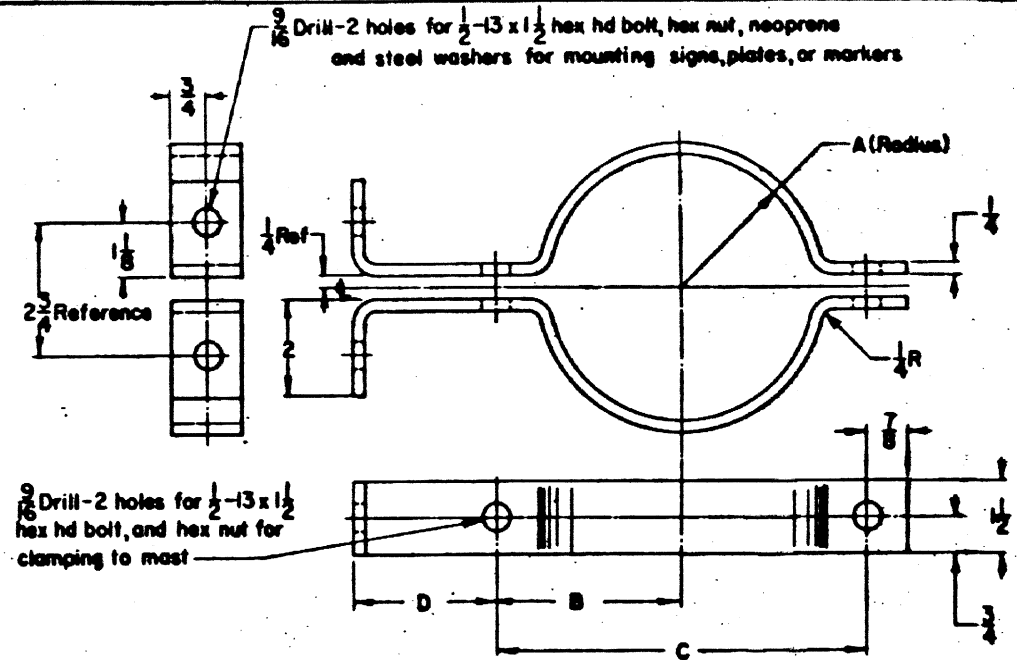
7000-23 NUMBER PLATE-TYPICAL

Specify signal number required in accordance with C.S. 23, section 119 instruction. Length of sign to be made to suit figures and letters used, except when drilling "C" is called for. In that case, the minimum length of sign is 24 inches, with figures centrally grouped. Specify drilling A, B, C, or D as required. See drilling diagram below. For material specification, see note 1.



DRILLING DIAGRAM

See sheet 7 & 8 for mountings and brackets used



- 7000-25 BRACKET FOR 5" MAST** A=2 3/8 B=3 7/8 C=7 1/2 D=3
- 7000-26 BRACKET FOR 6" MAST** A=3 3/8 B=4 1/2 C=9 D=2 3/8
- 7000-27 BRACKET FOR 3-1/2" MAST** A=2 B=3 1/2 C=6 1/2 D=3
- 7000-30 BRACKET FOR 4" MAST** A=2 1/4 B=3 1/2 C=7 D=3

To be furnished complete as shown including fasteners specified.
Material - 1018 steel

SEE NOTES ON SHEET 1

SHEET 4
CONT'D ON SH 5

CONRAIL  **CS-7000-A**

STANDARD
SIGNS AND MARKERS
SIGNAL NUMBER PLATES AND BRACKETS

FEB. 28, 1979