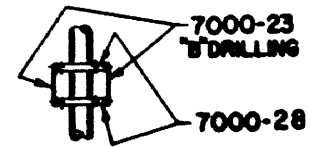
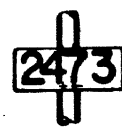
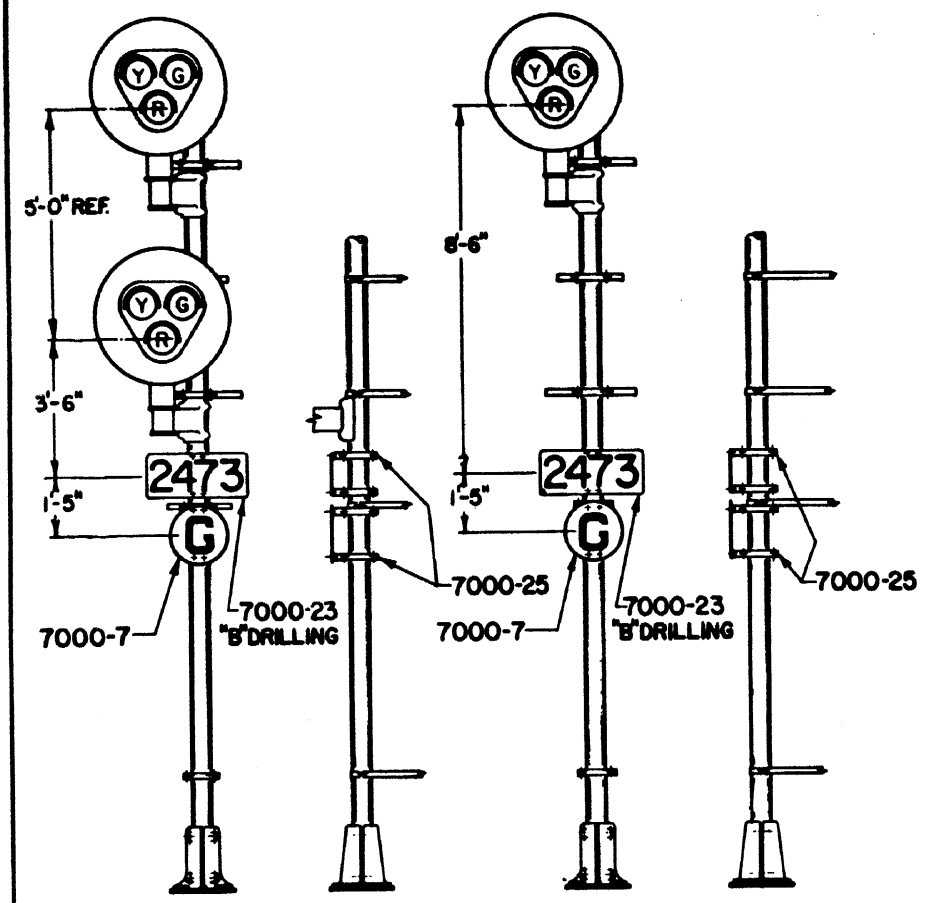


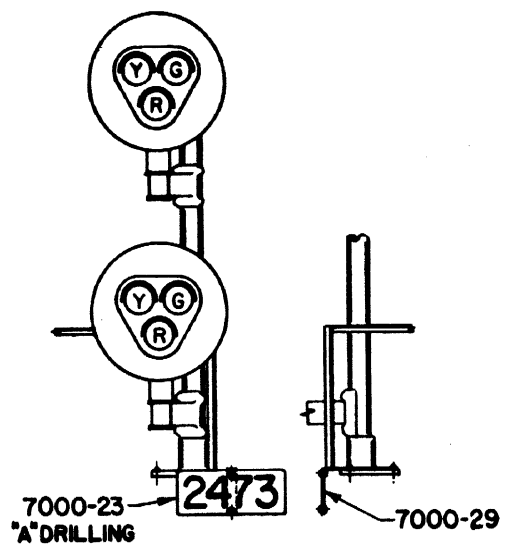
Revision A 12-4-80 added 7000-2 approach sign, changed view to show 7000-13 as square type stop sign. Added R-Y-G to color light units. Revision B, 6-1-85 added color light dwarf signal. Rev C - deleted temp. signs.



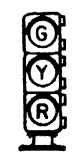
NUMBER PLATE MOUNTING FOR BACK TO BACK SIGNAL LOCATIONS



GROUND MAST MOUNTINGS



BRACKET MAST MOUNTING



COLOR LIGHT DWARF

SEE SHEET 2 FOR ACCOUNT REFERENCE NUMBERS
SEE NOTES ON SHEET 1

SHEET 8
CONT'D ON SH 9



CS-7000-C

STANDARD
SIGNS AND MARKERS
POSITION OF COLORED LENSES
MOUNTING OF NUMBER PLATES, AND GRADE
MARKERS WITH STYLE G COLOR LIGHT SIGNALS
OCT. 28, 1976

REV. 10-31-85