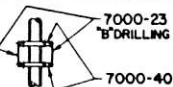


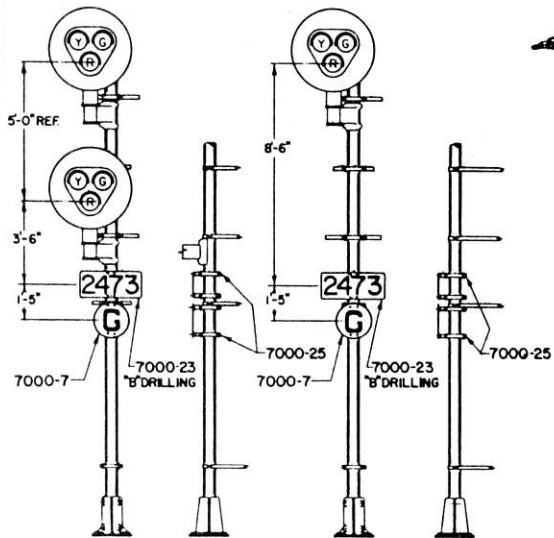
Revision A 12-4-80 added 7000-23 approach sign, changed color to show 7000-13 as square type stop sign. Added R-7-G to color light unit. Revision B 6-11-83 added color light dwarf signal. Rev C - 10-31-85 removed location of signs. Rev D - 11-21-86 added location of signs.



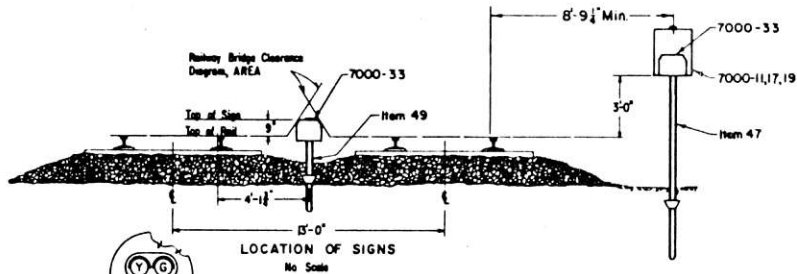
7000-23  
"B" DRILLING

7000-40

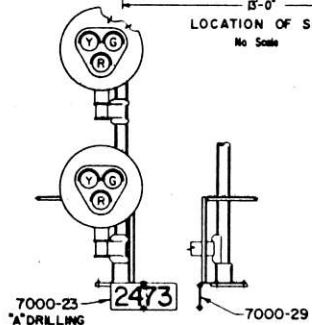
NUMBER PLATE MOUNTING FOR  
BACK TO BACK SIGNAL LOCATIONS



GROUND MAST MOUNTINGS



LOCATION OF SIGNS  
No Scale



BRACKET MAST MOUNTING



COLOR LIGHT  
DWARF

SEE SHEET 2 FOR ACCOUNT REFERENCE NUMBERS  
SEE NOTES ON SHEET 1

SHEET 8  
CONT'D ON SH 9



CS-7000-D

STANDARD  
SIGNS AND MARKERS  
LOCATION OF SIGNS & POSITION OF COLORED LENSES  
MOUNTING OF NUMBER PLATES, AND GRADE  
MARKERS WITH STYLE G COLOR LIGHT SIGNALS  
OCT 28, 1976

Rev. No. 21, 1986

70