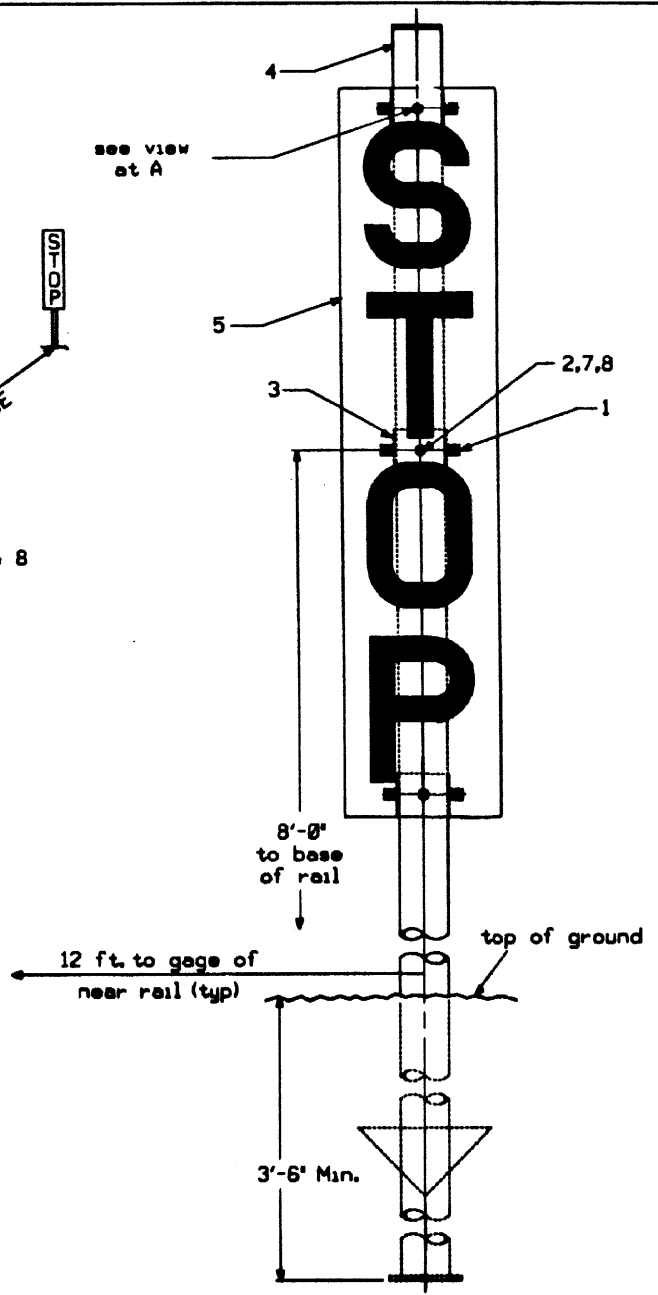
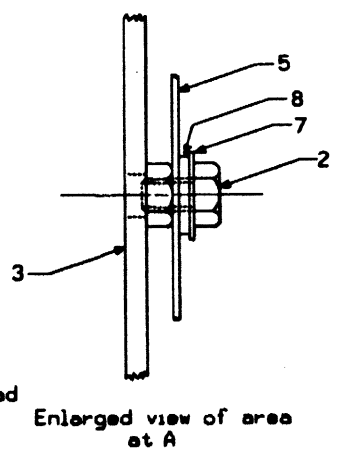
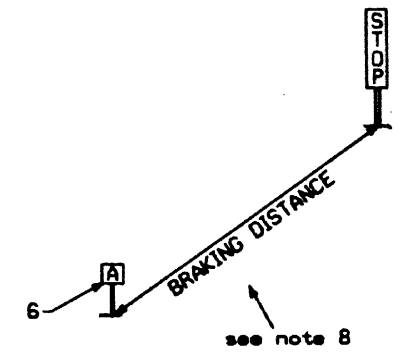


SIGN 7010-1

Face entire plate with No.2872
Red high intensity Scotchlite mat'l.
(47-723489)
Letters to be No.2870 Silver high
intensity Scotchlite (47-723000).

REV	DATE	BY

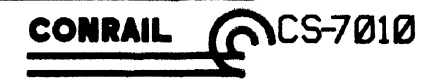


ITEM	NAME	REQ	REF	ACCT NO
1	Bolt,3/8-16x1-1/4LG-Hex Hd	9		
2	Bolt,3/8-16x5/8LG-Hex Hd	3		
3	Collar	3	74647	02-134854
4	Post	1	74645	02-372405
5	Sign,stop	1	7010-1	02-496949
6	Approach sign	1	MW78317	02-487203
7	Washer,3/8 Plain	3		19-751351
8	Washer,neoprene	3	9000-50	19-797172
9				
10				

NOTES:

1. Sign to be made from 6061-T6 aluminum alloy plate 0.081" thick.
2. Sign to be faced with Scotchlite or equal reflective material bonded to aluminum alloy plate. Colors to be as specified.
3. Sign to be single faced.
4. Proportions of letters to be in accordance with standard M/W plan 78010-A.
5. Bolts, nuts, and washers must be cadmium plated.
6. Paint post with black paint.
7. When installing post, coat all underground parts with no-oxide grease or equal.
8. Approach sign item 6 to be used in conjunction with stop sign located at braking distance in advance of stop sign per MW 4, Sec. 213.6.

SHEET 1



STANDARD
STOP SIGN - PERMANENT

Approved *[Signature]*
Chief Engineer C&S

ISSUE DATE: OCT.23,1985

REV.		