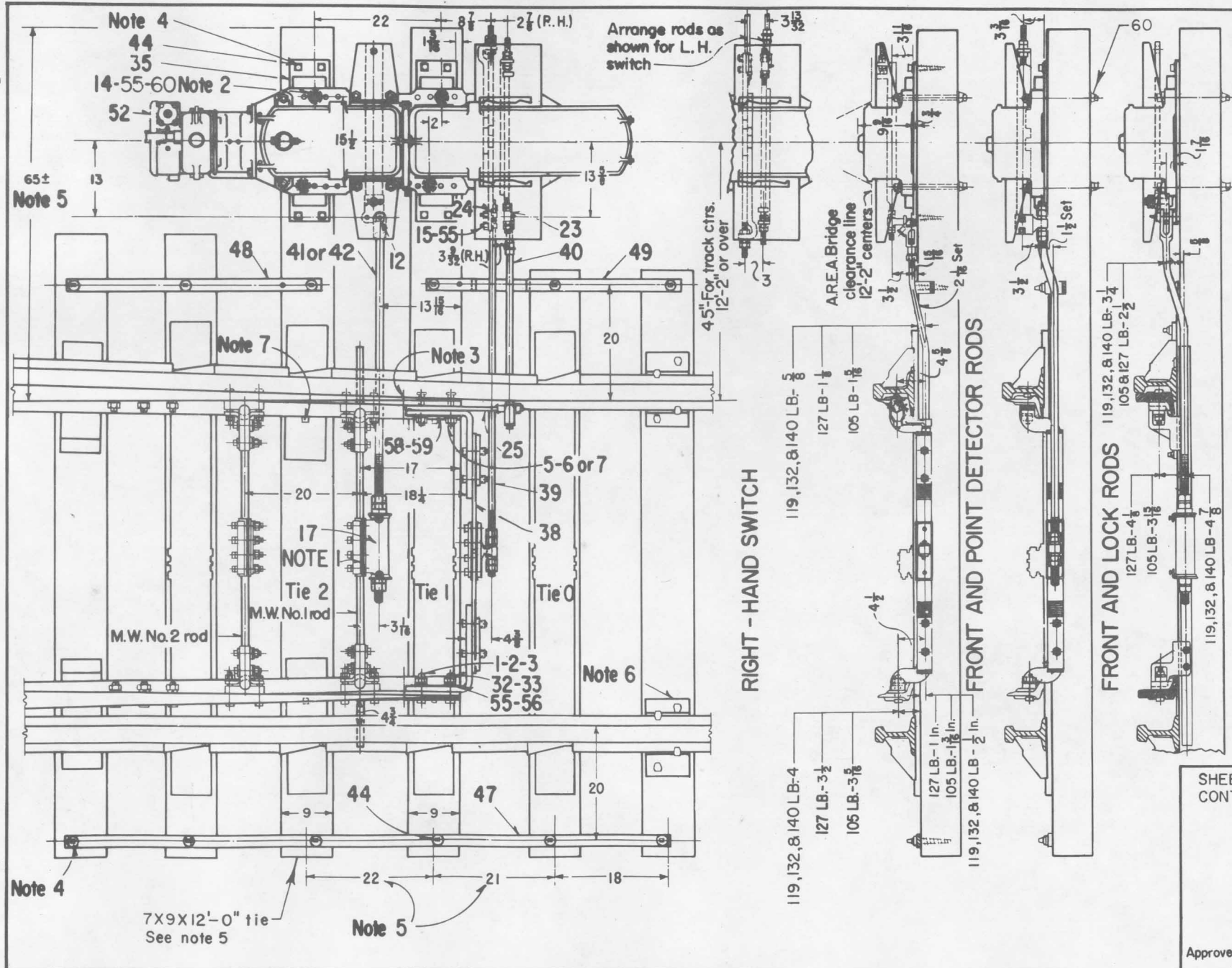


Rev. A-7-14-83: note 8 was "protective treatment - C.E. 234, Sec. 28," added 132 LB. rail, item 60, & dwg. note for 7X9X12'-0" ties, item 29 deleted, included with switch machine.
 Rev. B-8-19-88: Removed item numbers 9 & 10, ref. numbers 8001-18 & 8001-19.



- NOTES:**
- To install switch adjustment bracket, Item 17; On Type MJ rods, retain splice plate and attach bracket using four bolts. On other vertical rods, remove one splice plate and attach bracket using four bolts.
 - Item 14 to be ASA regular double end stud bolt with square nuts and spring washer.
 - To provide clearance for front rod or point lug, switch bolt located 9-1/2 inches from switch point may be removed.
 - Holes for Drive Spikes, Item 44, to be one-half inch in diameter and five inches deep.
 - M. of V. to provide ties of size and length required, spaced as indicated. Creosote after framing.
 - M. of W. Dept. to provide double shoulder tie plates on five ties starting with second tie ahead of switch points.
 - M. of W. Dept. to provide suitable holes in gage plates, tie plates and ties for emergency spiking of switch. Four holes required.
 - Bolt, item 12 is to be installed through operating rod and throw bar coupling with grease fitting on top, nut and cotter key on bottom.

NOTES CONTINUED ON SH. 3

0 12 24 36
 All dimensions given in inches

SHEET 1
 CONT'D ON SH 2

CONRAIL

CS-8000-B

STANDARD
 SWITCH LAYOUT

GRS MODEL 5 SERIES SWITCH MACHINES
 105, 119, 127, 132, & 140 LB. RAIL

AUG. 8, 1976

Approved *H. J. Alexander*
 Chief Engineer C&S

Revised 8-19-88

Printed in U.S.A.