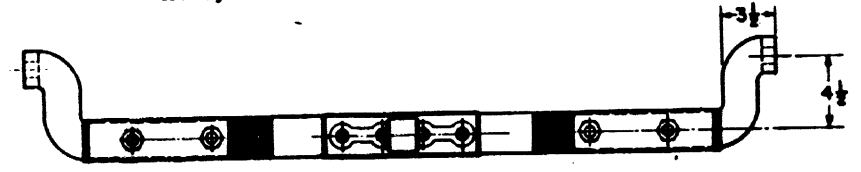
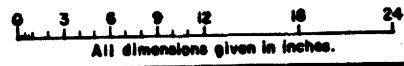


STANDARD ASSEMBLY SHOWN
Assembly To Be Made As Indicated On Switch Layout Plans.



8001-50,- FRONT ROD, ADJUSTABLE-(L=11-1/2)
8001-55,- FRONT ROD, ADJUSTABLE-(L=13-1/2)
APPLIES TO 127 LB. RAIL, FOR 105 LB. RAIL SPECIFY BUSHINGS, ITEMS 8 & 9.

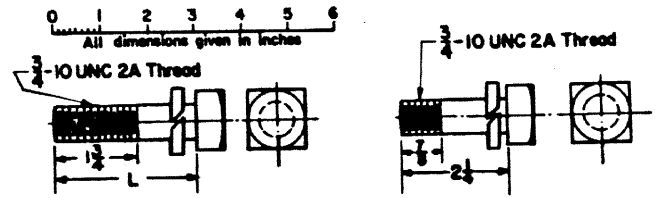


NO.	ITEM	8001-50	8001-51	8001-53	8001-55	REMARKS	ACCT NO.
1	Bolt, 3/4-10 X 2-1/4, Sq. Hd.	4	4	4	4		
2	Bolt, 3/4-10 X 3-1/4, Sq. Hd.	4	2	2	2		
3							
4	Bracket, Compl.	1					02-07588H
5							
6							
7	Bushing, Insulation	4	4	4	4		
8	Bushing - Per 3/4 Bolt, Front Rod only	2	2	2	2	105 Lb. Rail	02-082855
9	Bushing - Per 3/4 Bolt, Front Rod & Point Lug	2			2	105 Lb. Rail	
10							
11	Lug, Switch Point L.H. L=13-1/2				1		
12	Lug, " " R.H. L=13-1/2				1		
13	Lug, " " L.H. L=11-1/2		1				
14	Lug, " " R.H. L=11-1/2			1			
15							
16	Nut, 3/4-10 Hex Elastic Stop Nut	4	2	2	4		12-443800
17	Plate, Connecting	1	1	1	1		
18	Plate, Insulation	2	2	2	2		
19	Plate, Center	2	1	1	2		
20	Rod, Front - Straight						
21	Washer, Plate	2	1	1	2		02-336610

NOTES:

1. Bolts, nuts, and threads to be as specified on plan G35C, MOW switch bolts.
2. Washers to be in accordance with current AREA specifications.
3. Protective treatment to be in accordance with specification CE234, section 28 or equivalent.
4. Account reference numbers are listed on sheet 5.

Heavy, Unfinished, Sq. Hd. Bolts, AAR Spec., M. P. 17
Medium Steel Spring Washers, AAR Spec., M. P. 35



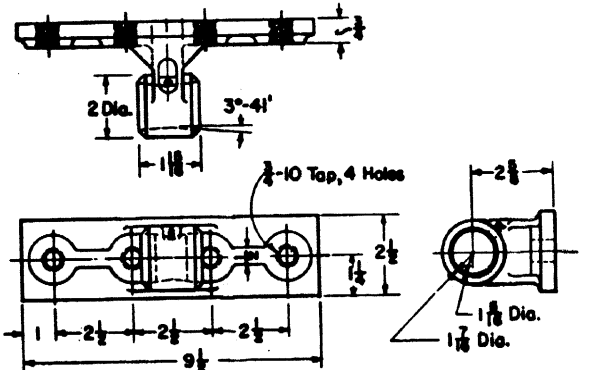
8001-28, BOLT COMPL.
For applying GRS switch adjusting bracket 46948-13 Gr. 2 to M. of W. rod, double slip switch.

8001-18, BOLT COMPL.
L=3 inches

8001-19, BOLT COMPL.
L=3-1/2 inches

8001-58, BOLT COMPL.
For applying bracket 8001-21 to front rods.

For applying GRS switch adjusting bracket 46948-12, Gr. 1 or bracket 8001-21 to M. of W. switch rods.



8001-21,- BRACKET, COMPL.
WITH 1/4 IN., STRAIGHT, DRIVE OILER
MATERIAL- STEEL, ASTM-A27-46T, GRADE 65-50.
All dimensions given in inches.

SHEET 1
CONT'D ON SH 2

CONRAIL

CS-8001

STANDARD
SWITCH RODS
FRONT RODS FOR SWITCHES
OPERATED BY GRS SWITCH MACHINES
105,119,127, & 140 LB. RAIL

Approved *H. Alexander* AUG. 6, 1976
Chief Engineer CBS