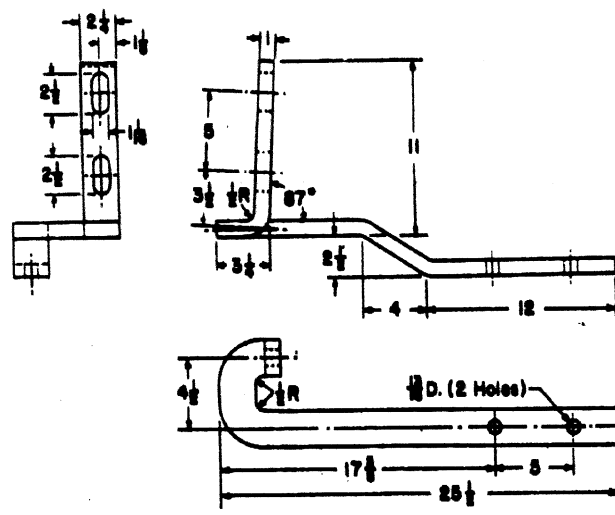
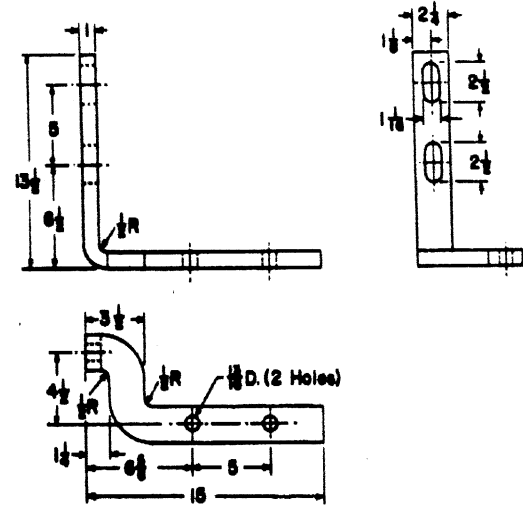


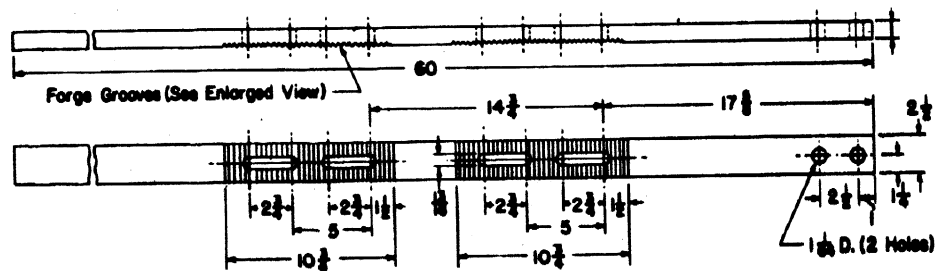
8001-61, POINT LUG, L.H.



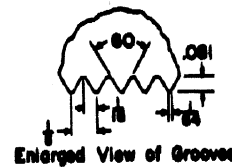
8001-62, POINT LUG, R.H.



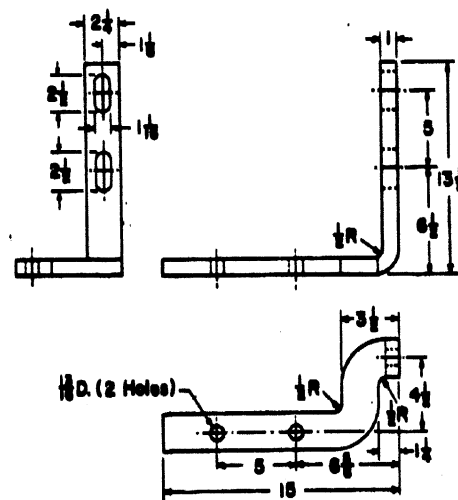
8001-63, LUG, L.H.



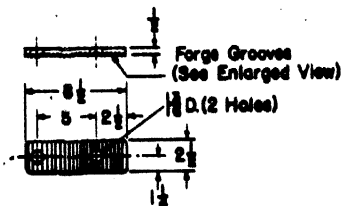
8001-65, CONNECTING ROD



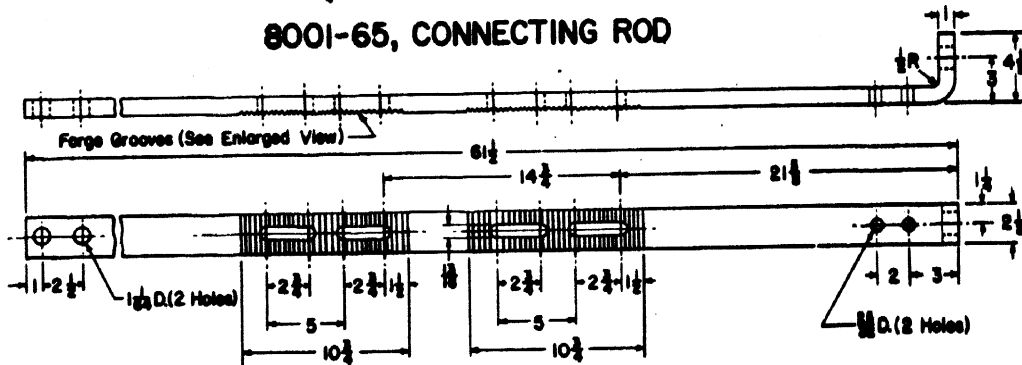
Enlarged View of Grooves



8001-64, LUG, R.H.



8001-67 WASHER PLATE, SERRATED



8001-66, CONNECTING ROD

SEE SHEET 1 FOR GENERAL NOTES



All dimensions given in inches.

SHEET 4  
CONRAIL CS-8001

CONTD ON SH 5  
STANDARD SWITCH RODS  
FRONT ROD PARTS FOR SLIP SWITCHES  
OPERATED BY GRS SWITCH MACHINES  
105, 119, 127, & 140 LB. RAIL  
AUG. 6, 1978