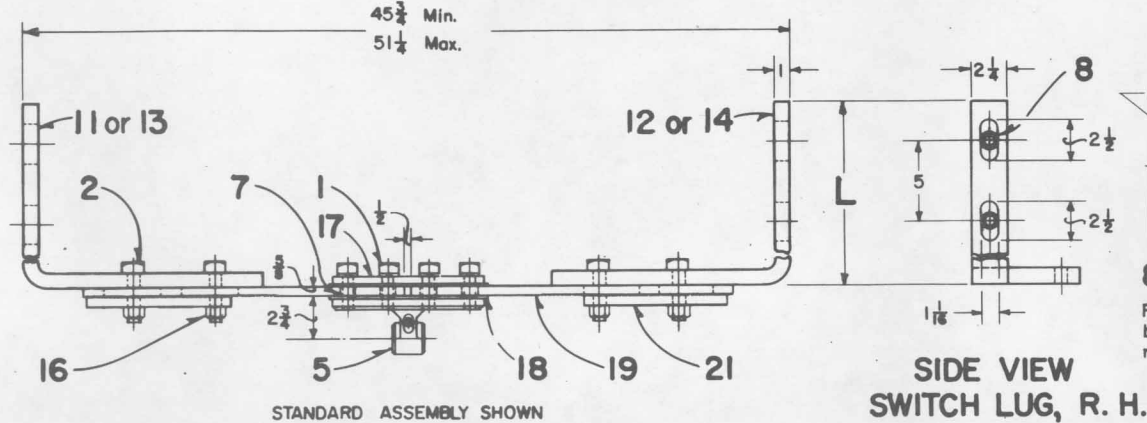
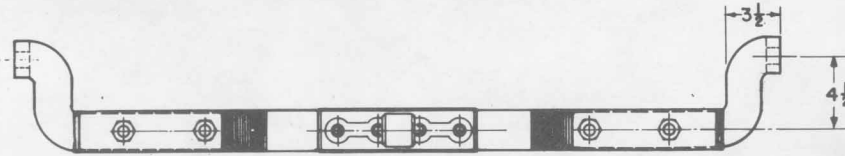


Rev. A-8-17-88: Removed 8001-18 & 8001-19 bolts. Added new AAR numbers.

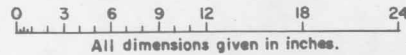


Assembly To Be Made As Indicated On Switch Layout Plans.



**8001-50, FRONT ROD, ADJUSTABLE-(L=11-1/2)**  
**8001-55, FRONT ROD, ADJUSTABLE-(L=13-1/2)**

APPLIES TO 127 LB. RAIL, FOR 105 LB. RAIL SPECIFY BUSHINGS, ITEMS 8 & 9.

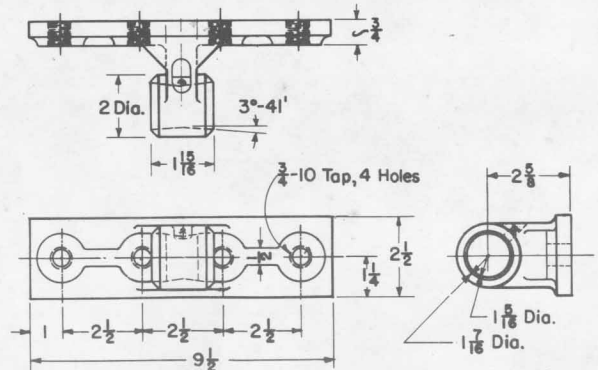
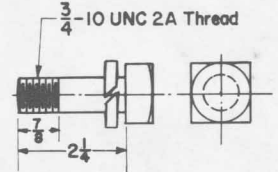
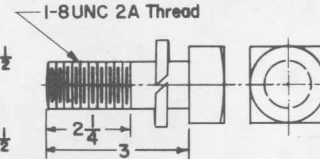
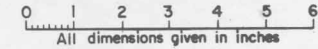


NO.	ITEM	8001-50	8001-51	8001-53	8001-55	REMARKS	ACCT NO.
1	Bolt, 3/4-10 X 2-1/4, Sq. Hd.	4	4	4	4		
2	Bolt, 3/4-10 X 3-1/4, Sq. Hd.	4	2	2	2		
3							
4							
5	Bracket, Compl.		1	1	1		02-075891
6							
7	Bushing, Insulation		4	4	4	AAR 12.1.6-#5	
8	Bushing - For 3/4 Bolt, Front Rod only		2	2	2	105 Lb. Rail	02-082855
9	Bushing - For 3/4 Bolt, Front Rod & Point Lug		2		2	105 Lb. Rail	
11	Lug, Switch Point L.H. L=13-1/2				1		
12	Lug, " " R.H. L=13-1/2				1		
13	Lug, " " L.H. L=11-1/2		1				
14	Lug, " " R.H. L=11-1/2			1			
15							
16	Nut, 3/4-10NC Hex Elastic Stop Nut	4	2	2	4		19-443900
17	Plate, Connecting		1	1	1	AAR 12.1.20-1	
18	Plate, Insulation		2	2	2	AAR 12.1.20-2	
19	Plate, Center		2	1	2		
20	Rod, Front - Straight			1	1	8001-59	
21	Washer, Plate		2	1	2	AAR 12.1.10-2	02-338810

**NOTES:**

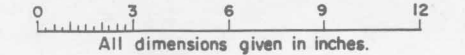
1. Bolts, nuts, and threads to be as specified on plan G35C, MOW switch bolts.
2. Washers to be in accordance with current AREA specifications.
3. Protective treatment to be in accordance with specification CE234, section 28 or equivalent.
4. Account reference numbers are listed on sheet 5.

Heavy, Unfinished, Sq. Hd. Bolts, AAR 14.6.20  
Medium Steel Spring Washers, AAR 14.6.21



**8001-21, BRACKET, COMPL.**

WITH 1/4 IN., STRAIGHT, DRIVE OILER  
MATERIAL- STEEL, ASTM-A27-46T, GRADE 65-30.



SHEET 1  
CONT'D ON SH 2

**CONRAIL**

CS-8001-A

STANDARD

**SWITCH RODS**

FRONT RODS FOR SWITCHES  
OPERATED BY GRS SWITCH MACHINES  
105, 119, 127, & 140 LB. RAIL

Approved

*H. Alexander*  
Chief Engineer CBS

AUG. 6, 1976

Revised 8-17-88