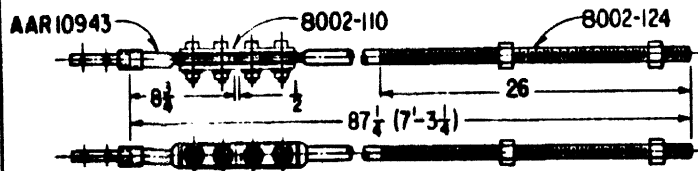
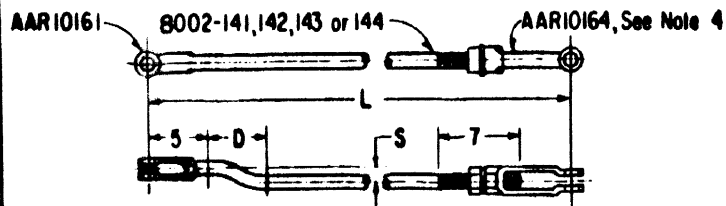


THROW RODS COMPLETE

NO.	L	S	D	T	HEX. NUTS
8002-6	59	1-7/8	6	26	2
8002-7	59	2-7/8	6	26	2
8002-8	59	1-3/16	6	26	2
8002-9	59	2-3/16	6	26	2
8002-10	68	3-1/4	10	26	2
8002-11	68	2-1/2	12	26	2
8002-12	68	2-7/8	12	26	2
8002-13	81	1-5/8	12	26	2
8002-14	54	2-13/16	6	22	2
8002-15	75	1-3/16	6	26	2
8002-16	75	2-3/16	6	26	2
8002-17	117	0	-	26	2
8002-18	110	3-3/4	12	26	2

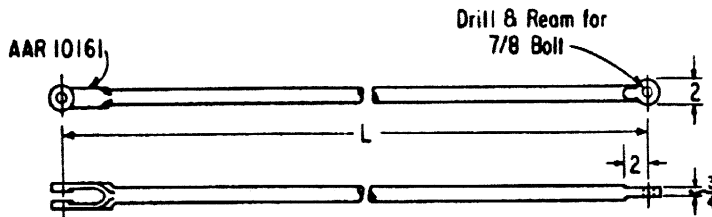


8002-21, THROW ROD COMPL.



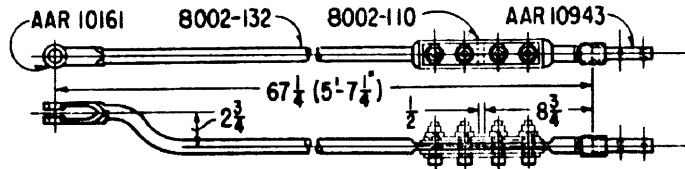
CONNECTING RODS, COMPL.

NO.	L	S	D	With Rod.
8002-31	33-3/4	0	-	8002-141
8002-32	35-1/4	0	-	8002-142
8002-33	25-1/2	0	-	8002-143
8002-34	30-1/2	1-1/8	5	8002-144

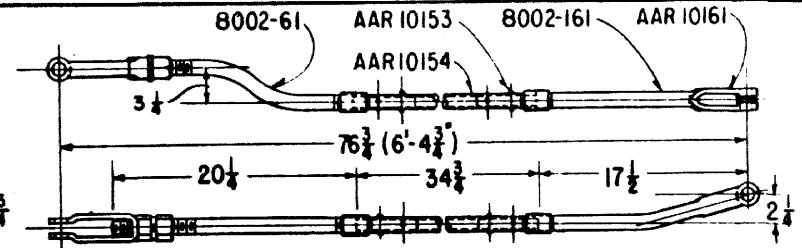


CONNECTING RODS

- 8002-41, L=111-3/4
- 8002-42, L=110-1/2
- 8002-43, L=91-3/4
- 8002-44, L=90-1/2
- 8002-45, L=31-3/4
- 8002-46, L=30-1/2

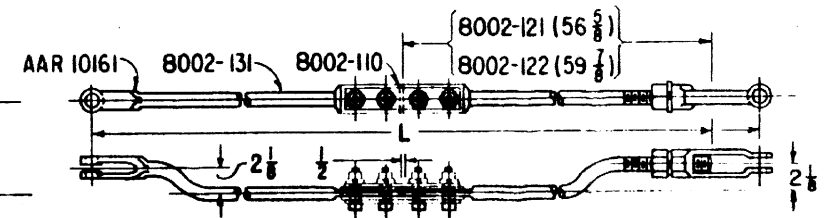


8002-51, CROSS CONNECTING ROD COMPL.



CONNECTING ROD

- 8002-71, COMPL., With screw jaw AAR 10164
- 8002-72, ROD ONLY, Less screw jaw.

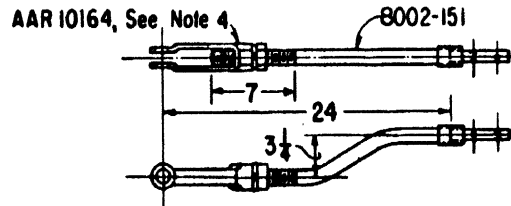


CROSS CONNECTING RODS

- 8002-81, COMPL., With screw jaw. With 8002-122 L=116
- 8002-82, ROD ONLY, Less screw jaw. With 8002-122 L=111-3/4
- 8002-83, COMPL., With screw jaw. With 8002-121 L=112-3/4
- 8002-84, ROD ONLY, Less screw jaw. With 8002-121 L=108-1/2

NOTES:

- 1-Rods to be of C1020 steel, 1-1/4 inches in diameter. Factory welds permitted but rods shall not be welded or reformed after manufacture. Portions which have been subjected to forging or welding operations to be normalized.
- 2- Nuts shall be of C1020 steel, ASA heavy hex. jam nuts unless otherwise indicated.
- 3- Threads shall be 1 1/4-7, external threads shall be ASA-UNC-2A with rounded root throughout. Internal threads shall be ASA-UNC-2B.
- 4- Screw Jaws are AAR 10164 and will be furnished complete with hex. nuts and ASA medium lock washers. Exceptions as noted.
- 5- Protective treatment, CE 234 Sec. 28
- 6- See sheet 3 for account reference numbers.



8002-61, TANG END ROD COMPL.



All dimensions given in inches.

SHEET 1
CONT'D ON SH 2

CONRAIL

CS-8002-A

STANDARD
RODS
FOR SWITCH LAYOUTS
MAY 1, 1978

App'd *H. Alexander*
Chief Engineer C&S