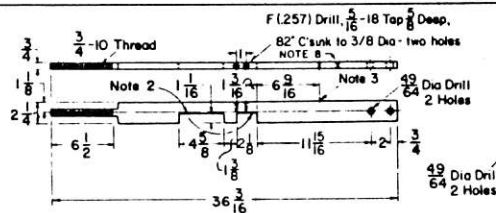
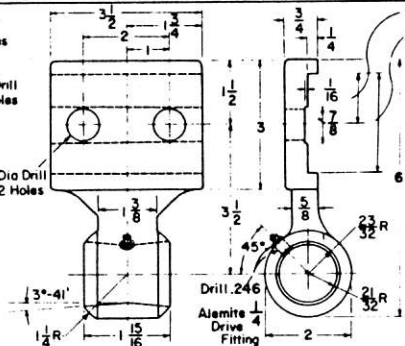


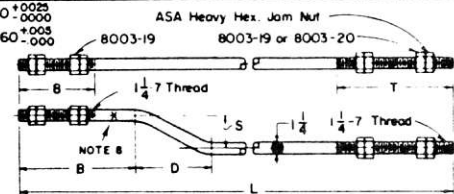
Rev A - 6-22-84 changed  
 8003-15 dimensions - 11-29/32  
 was 11-25/16, 2-5/16 was 2-1/8,  
 1-9/32 was 1-3/8 added MOD  
 Changed 8003-17 dimensions  
 11-5/32 was 11-1/4, 2-5/16  
 was 2-1/8, 1-9/32 was 1-3/8  
 added MOD  
 Hex B: K1 21: 87 changed rev A  
 dimensions back to original  
 added note B



**8003-15 LOCK PLATE**  
 C1020 Steel forged



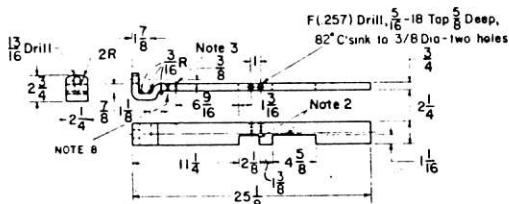
**8003-18 LUG**  
 Steel ASTM-A27-46T, Grade 65-30



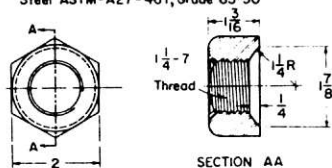
ROD ONLY (C1020 STEEL)						ROD ONLY - WITH NUTS				
NO	L	S	B	D	T	NO	ROD	JAM NUT	8003-19	8003-20
8003-11	67	1-1/2	12	8	12	8003-21	8003-11	4	4	—
8003-12	58	2-1/2	12	8	12	8003-22	8003-12	4	4	—
8003-13	58	3-1/2	12	8	12	8003-23	8003-13	4	4	—
8003-111	24-3/4	1	9-3/8	6	8	8003-21	8003-111	4	2	2
8003-112	24-3/4	1-3/16	9-3/8	6	8	8003-22	8003-112	4	2	2
8003-113	67	2-7/8	12	8	12	8003-23	8003-113	4	4	0
8003-114	74	3-1/2	12	8	12	8003-24	8003-114	4	4	0
8003-115	74	4-1/4	12	8	12	8003-25	8003-115	4	4	0
8003-116	67	3/4	12	8	12					

**NOTES:**

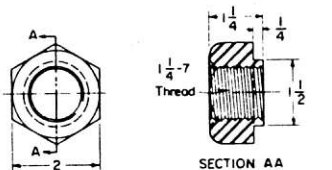
- PARTS MANUFACTURED BY FORGING OR WELDING MUST BE NORMALIZED
- LOCKING NOTCHES MUST BE ACCURATE TO DIMENSIONS, FREE FROM BURRS AND HAVE STRAIGHT EDGES
- LOCKING NOTCHES 1/32 DEEP, 1/32 WIDE
- ALL NUTS TO BE C1020 STEEL, SHALL BE HOT FORGED, COLD TRIMMED, NORMALIZED CHAMFERED AND FACED
- PROTECTIVE TREATMENT, CE 234, SEC. 28
- ACCOUNT REFERENCE NUMBERS LISTED ON SHEET 6
- EXTERNAL THREADS SHALL BE ASA-UNC-2A WITH ROUNDED ROOT THROUGHOUT  
INTERNAL THREADS SHALL BE ASA-UNC-2B
- SHOW MANUFACTURERS NAME OR TRADE MARK



**8003-17 LOCK PLATE**  
 C1020 Steel forged



**8003-19 CUP NUT**  
 C1020 STEEL



**8003-20 SLEEVE NUT**  
 C1020 STEEL

SHEET 2  
 CONT'D ON SH 3

**CONRAIL**

STANDARD  
**SWITCH RODS**  
 LOCK ROD PARTS FOR SWITCHES  
 OPERATED BY GRS SWITCH MACHINES

CS-8003-B

AUG 6, 1976

REV. 2-87