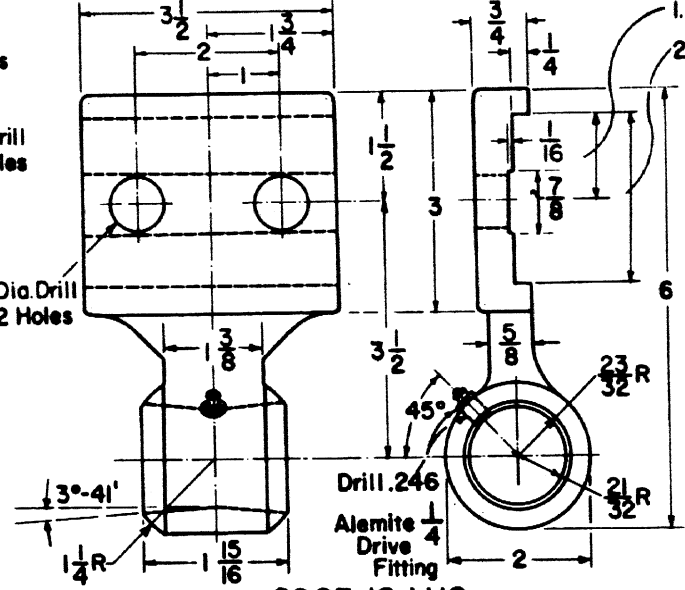
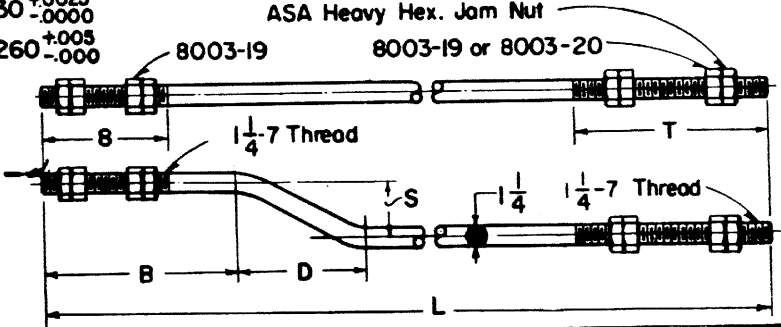


8003-15 LOCK PLATE
C1020 Steel forged



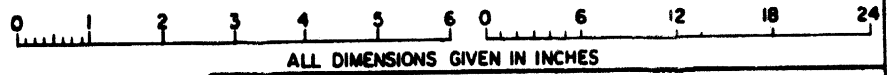
8003-18 LUG
Steel ASTM-A27-46T, Grade 65-30



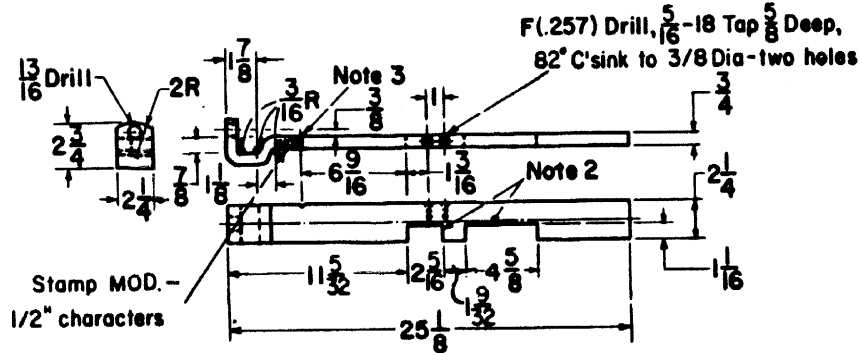
ROD ONLY (C1020 STEEL)						ROD ONLY-WITH NUTS				
NO.	L	S	B	D	T	NO.	ROD	JAM NUT	3003-19	3003-20
8003-11	67	1-1/2	12	8	12	8003-21	8003-11	4	4	—
8003-12	58	2-1/2	12	8	12	8003-22	8003-12	4	4	—
8003-13	58	3-1/2	12	8	12	8003-23	8003-13	4	4	—
8003-111	24-3/4	1	9-3/8	6	8	8003-121	8003-111	4	2	2
8003-112	24-3/4	1-3/16	9-3/8	6	8	8003-122	8003-112	4	2	2
8003-113	67	2-7/8	12	8	12	8003-123	8003-113	4	4	0
8003-114	74	3-1/2	12	8	12	8003-124	8003-114	4	4	0
8003-115	74	4-1/4	12	8	12	8003-125	8003-115	4	4	0
8003-116	67	3/4	12	8	12					

NOTES:

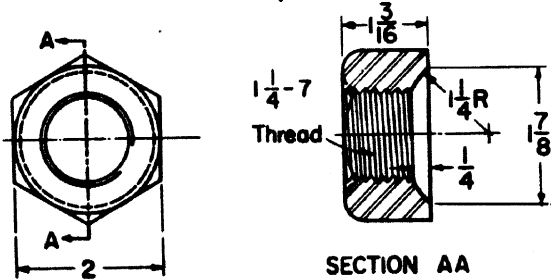
- 1.- PARTS MANUFACTURED BY FORGING OR WELDING MUST BE NORMALIZED.
- 2.- LOCKING NOTCHES MUST BE ACCURATE TO DIMENSIONS, FREE FROM BURRS AND HAVE STRAIGHT EDGES.
- 3.- LOCATING NOTCHES 1/32 DEEP, 1/32 WIDE.
- 4.- ALL NUTS TO BE C1020 STEEL, SHALL BE HOT FORGED, COLD TRIMMED, NORMALIZED CHAMFERED AND FACED.
- 5.- PROTECTIVE TREATMENT, CE 234, SEC. 28.
- 6.- ACCOUNT REFERENCE NUMBERS LISTED ON SHEET 6.
- 7.- EXTERNAL THREADS SHALL BE ASA-UNC-2A WITH ROUNDED ROOT THROUGHOUT. INTERNAL THREADS SHALL BE ASA-UNC-2B.



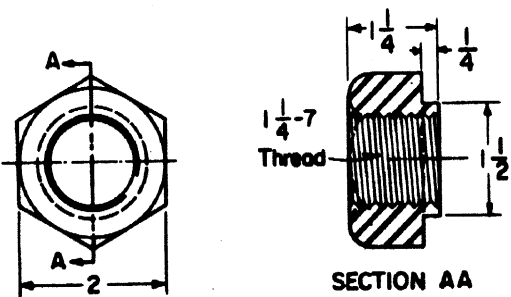
ALL DIMENSIONS GIVEN IN INCHES



8003-17 LOCK PLATE
C1020 Steel forged




8003-19 CUP NUT
C1020 STEEL



8003-20 SLEEVE NUT
C1020 STEEL

SHEET 2
CONT'D ON SH 3

CONRAIL  **CS-8003A**

STANDARD
SWITCH RODS
LOCK ROD PARTS FOR SWITCHES
OPERATED BY GRS SWITCH MACHINES

AUG. 6, 1976