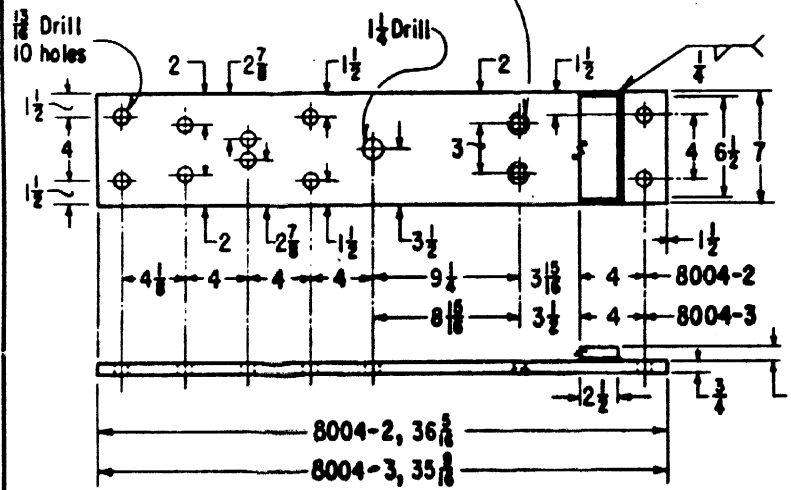
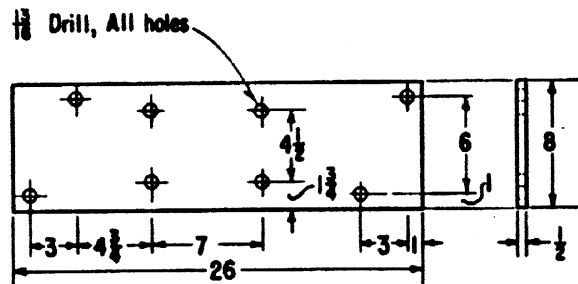


8004-1, SADDLE PLATE COMPL, G.R.S. 5A, C, E, & G MACH.

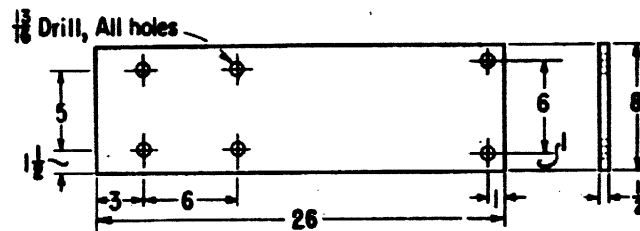
Punch 1/8 square holes & countersink for 7/8 regular sq. neck plow bolts.



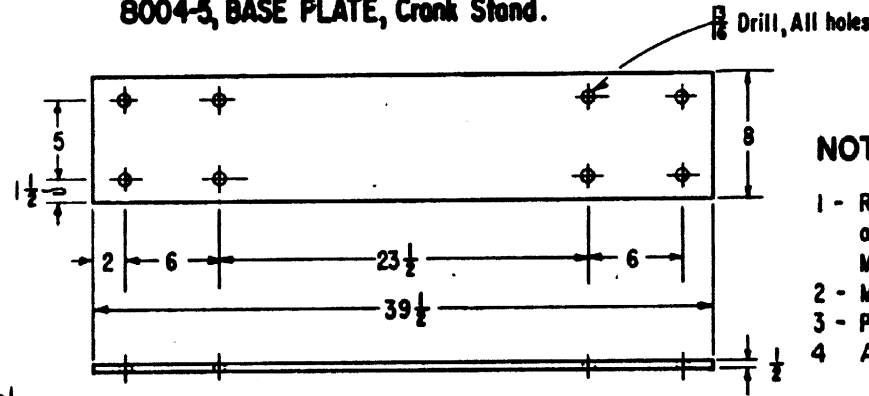
8004-2, TIE PLATE COMPL. HBP Derail, 139/30 lb. rail.
8004-3, TIE PLATE COMPL. HBP Derail, 105 lb. rail.



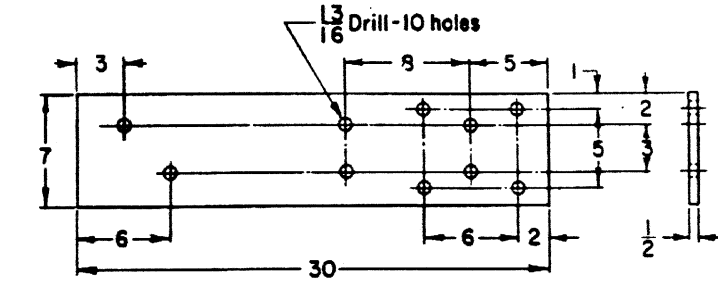
8004-4, BASE PLATE, Plunger Lock.



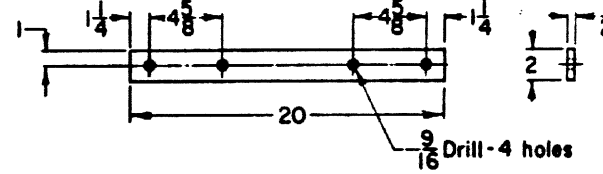
8004-5, BASE PLATE, Crank Stand.



8004-6, BASE PLATE, Crank Stand.



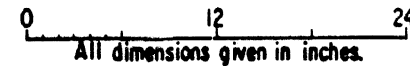
8004-7 BASE PLATE, Crank Stand



8004-8 SUPPORT, Pipe Carrier

NOTES:

- 1 - Rail Braces used with 8004-2 and 8004-3 are to be adjustable and removable and will be furnished by M. of W. Dept.
- 2 - Material - C1020 steel.
- 3 - Protective treatment - CE 234, Sec. 28
- 4 - Account reference numbers are listed on sheet 3.



SHEET 1
CONT'D. ON SH. 2



CS-8004-A

STANDARD
BASE PLATES

BASE PLATES FOR FACING POINT LOCKS,
GRS MODEL 5A, C, E, & G SWITCH MACHINES,
AND MODEL 10 LOCK

Approved: *H. J. [Signature]*
Chief Engineer C & S

SER 26, 1977