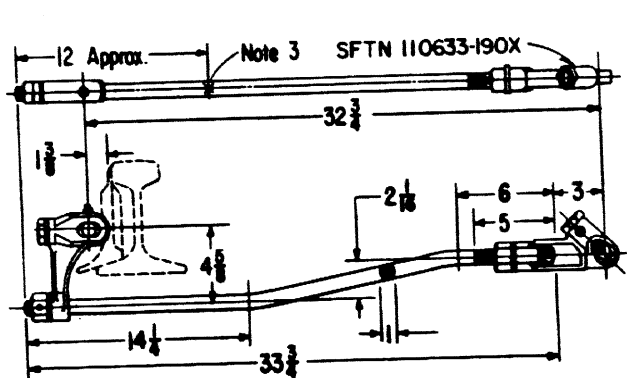
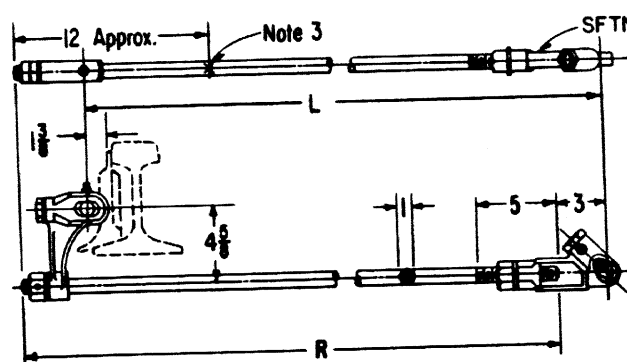


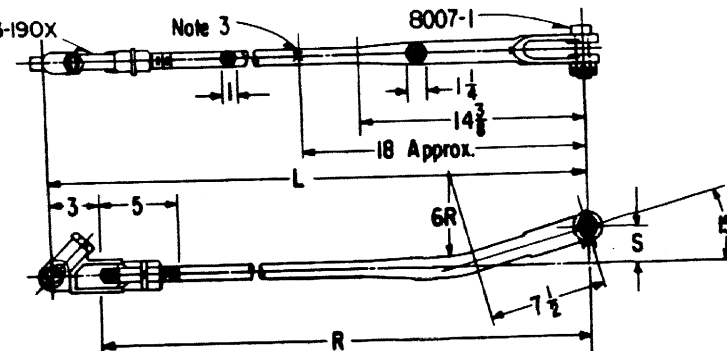
Rev. A-11-17-82: changed
controller socket part number
from RACO 333-37 to SFTN
110633-190X



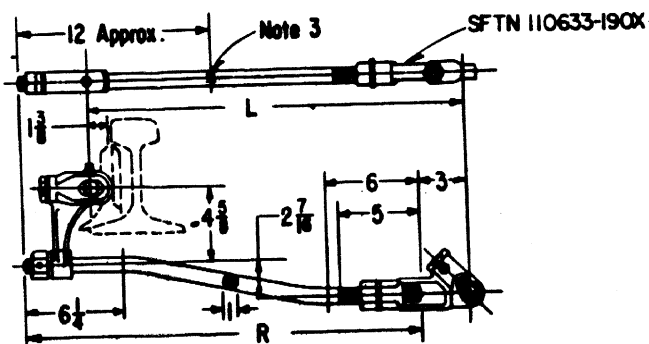
8005-1, ROD COMPLETE
8005-11, ROD & POINT SOCKET ASSEMBLY



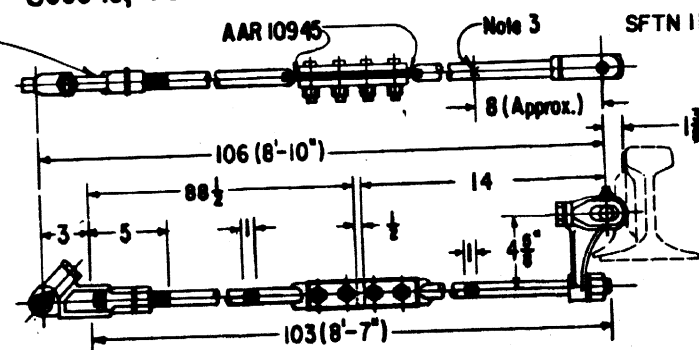
8005-3, ROD COMPLETE L=33-7/8
8005-13, ROD & POINT SOCKET ASSEMBLY R=34-7/8
8005-4, ROD COMPLETE L=46-3/8
8005-14, ROD & POINT SOCKET ASSEMBLY R=47-3/8
8005-5, ROD COMPLETE L=57
8005-15, ROD & POINT SOCKET ASSEMBLY R=58



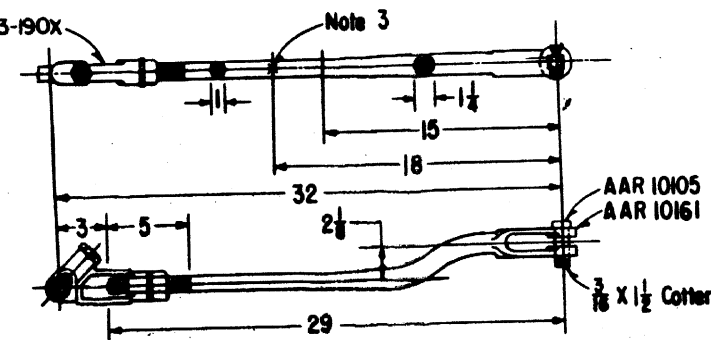
8005-6, ROD COMPLETE L=62-1/8
8005-16, ROD ONLY R=59-1/8 S=2-1/4
8005-7, ROD COMPLETE L=84
8005-17, ROD ONLY R=81 S=0



8005-2, ROD COMPLETE L=23-3/4
8005-12, ROD & POINT SOCKET ASSEMBLY R=24-3/4
8005-9, ROD COMPLETE L=39-1/4
8005-19, ROD & POINT SOCKET ASSEMBLY R=40-1/4



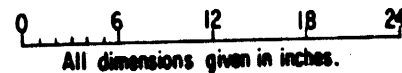
8005-105, ROD COMPLETE
8005-115, ROD & POINT SOCKET ASSEMBLY



8005-8, ROD COMPLETE
8005-18, ROD ONLY


- NOTES: 1 - Rods to be of 1335 steel. Factory welds permitted but rods shall not be welded or reformed after manufacture. Portions which have been subjected to forging or welding operations to be normalized.
2 - Threads shall be 1-8, external threads shall be ASA-UNC-3A with rounded root throughout. Internal threads shall be ASA-UNC-3B.
3 - Manufacturer's identification to be stamped on each rod at "X".
4 - For lengths not shown specify rod number and length required.
5 - Protective treatment-CE 234 Sec.28.

6 - Account reference numbers are listed on sheet 2.




All dimensions given in inches.

SHEET 1
CONT'D ON SH.2

CONRAIL  **CS-8005-A**

STANDARD
SWITCH RODS
POINT DETECTOR RODS FOR MECHANICALLY
OPERATED SWITCHES & SWITCHES OPERATED
BY GRS SWITCH MACHINES

Approved: 
Chief Engineer C&S

AUG. 6, 1976

Printed in U.S.A.

TRIM LINE