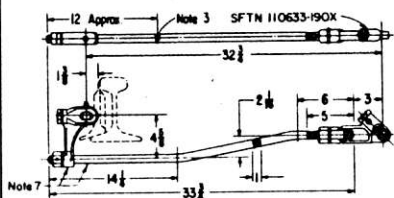
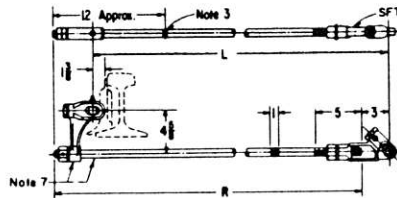


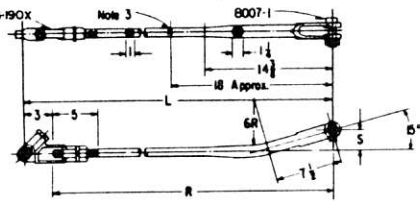
Rev. A 11-17-82 changed
 controller socket part number
 from BACO 533-37 to SFTN
 110633-190X
 Rev. B 8-27-86 Added Notes
 7 & 8



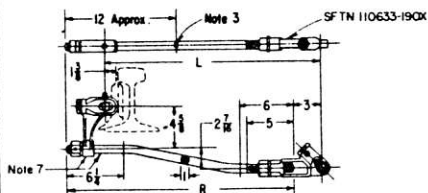
8005-1, ROD COMPLETE
 8005-11, ROD & POINT SOCKET ASSEMBLY



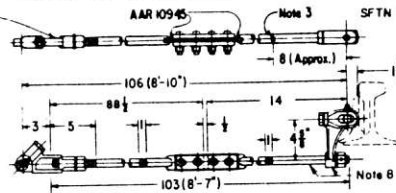
8005-3, ROD COMPLETE L=33-7/8
 8005-13, ROD & POINT SOCKET ASSEMBLY R=34-7/8
 8005-4, ROD COMPLETE L=46-3/8
 8005-14, ROD & POINT SOCKET ASSEMBLY R=47-3/8
 8005-5, ROD COMPLETE L=57
 8005-15, ROD & POINT SOCKET ASSEMBLY R=58



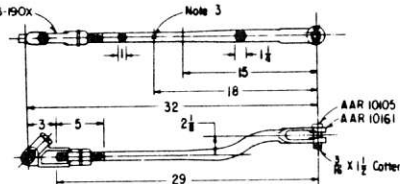
8005-6, ROD COMPLETE L=62-1/8
 8005-16, ROD ONLY R=59-1/8 S=2-1/4
 8005-7, ROD COMPLETE L=84
 8005-17, ROD ONLY R=81 S=0



8005-2, ROD COMPLETE L=23-3/4
 8005-12, ROD & POINT SOCKET ASSEMBLY R=24-3/4
 8005-9, ROD COMPLETE L=39-1/4
 8005-19, ROD & POINT SOCKET ASSEMBLY R=40-1/4



8005-105, ROD COMPLETE
 8005-115, ROD & POINT SOCKET ASSEMBLY



8005-8, ROD COMPLETE
 8005-18, ROD ONLY


- NOTES: 1- Rods to be of 1335 steel. Factory welds permitted but rods shall not be welded or reformed after manufacture. Portions which have been subjected to forging or welding operations to be non-malized.
- 2- Threads shall be 1-8, external threads shall be ASA-UNC-3A with rounded root throughout. Internal threads shall be ASA-UNC-3B.
- 3- Manufacturer's identification to be stamped on each rod at "X".
- 4- For lengths not shown specify rod number and length required.
- 5- Protective treatment-CE 234 Sec.2B

- 6- Account reference numbers are listed on sheet 2.
- 7- See detail "A" & "C" on sheet 2
- 8- See detail "B" & "C" on sheet 2.

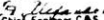
100

Printed in U.S.A.

SHEET 1
 CONT'D ON SH-2

CONRAIL  **CS-8005-B**

STANDARD
SWITCH RODS
 POINT DETECTOR RODS FOR MECHANICALLY
 OPERATED SWITCHES & SWITCHES OPERATED
 BY GRS SWITCH MACHINES

Approved: 
 Chief Engineer C.B.S.

AUG 6, 1976

See spec B-27.8L