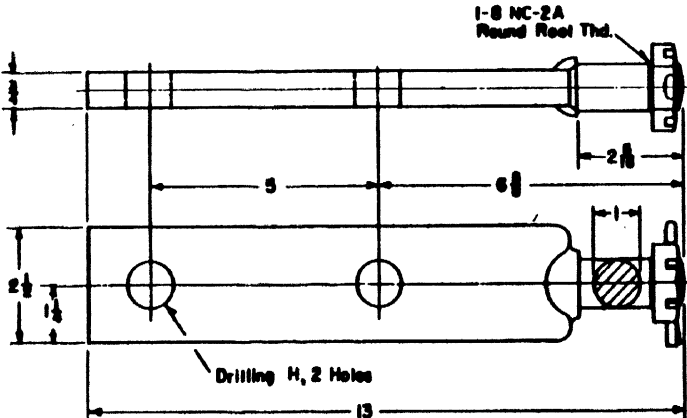


MATERIAL C-1020 STEEL

8006-21, POINT LUG, Compl. with Nut & Cotter
8006-31, POINT LUG, Only

BUSHINGS REQUIRED FOR 3/4 IN. BOLTS (105 LB. RAIL) SEE PLAN 8001, ITEMS 8 OR 9.



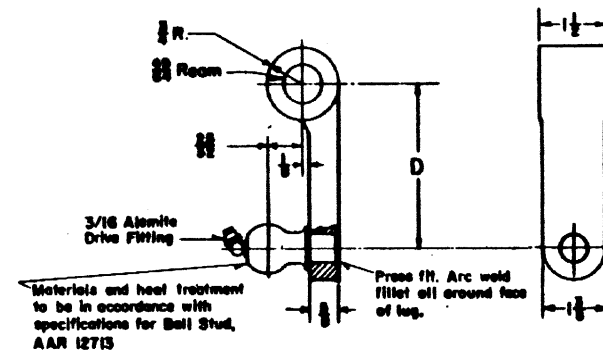
MATERIAL C1020 STEEL

8006-23, POINT LUG, Compl. with Nut & Cotter. H=1-1/16
8006-33, POINT LUG, Only H=1-1/16
8006-24, POINT LUG, Compl. with Nut & Cotter. H=13/16
8006-34, POINT LUG, Only H=13/16

NOTE:
 1.- Protective treatment - CE 234, Sec. 28.

ACCOUNT REFERENCE NUMBERS

8006-9	02-289674	8006-21	02-289682	8006-31
" -10	02-289856	"	"	"
		8006-23	02-289690	8006-33
		" -24	02-289708	" -34



MATERIAL-CAST STEEL

8006-9, BALL-STUD LUG, Compl. D=3-1/2
8006-10, BALL-STUD LUG, Compl. D=2-1/2

0 1 2 3 4 5 6
 All dimensions given in inches.

SHEET 1

CONRAIL  **CS-8006**

STANDARD LUGS
 FOR POINT DETECTOR RODS
 AUG. 6, 1978

Approved 
 Chief Engineer C&S