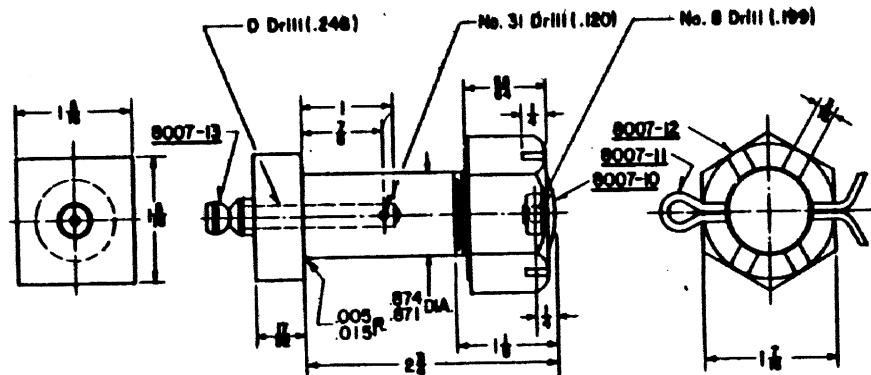


ACCOUNT REFERENCE NUMBERS

8007-1 02-054664  
 " -2 02-054672

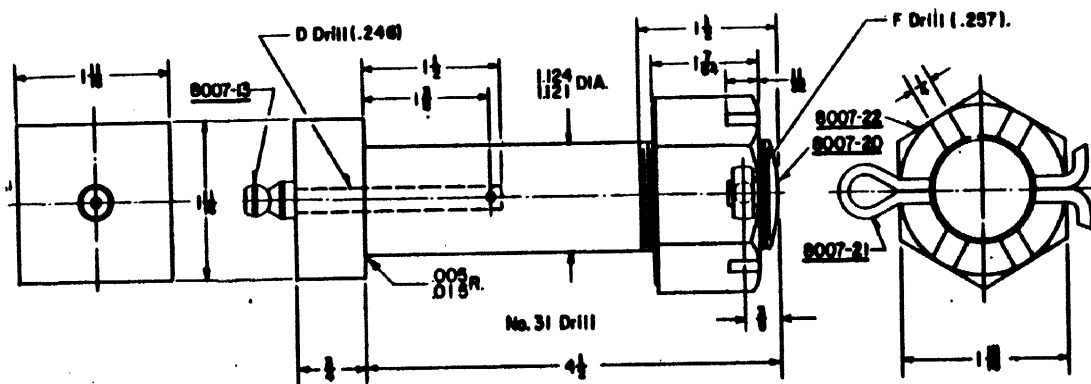


**8007-1, BOLT COMPLETE**

- 8007-10, BOLT ONLY, Sq. Hd. C. D. Steel, C-1117 or 1118, Thread 7/8-9NC-2A.
- 8007-11, COTTER, 3/16 X 2
- 8007-12, NUT, Heavy Hex., ASA. Semi-finished & cadmium plated. Thread 7/8-9 UNC-2B.
- 8007-13, OILER, Alomite 1/4 inch, straight, drive fitting.

NOTES:

1. BOLTS, NUTS AND THREADS SHALL BE IN ACCORDANCE WITH AAR MANUAL PART 17 EXCEPT AS OTHERWISE INDICATED.
2. PROTECTIVE TREATMENT, NO-OX-10, INSTRUCTION CE 234, SEC. 28.



**8007-2, BOLT COMPLETE**

- 8007-20, BOLT ONLY, Sq. Hd. C. D. Steel, C-1117 or 1118, Thread 1-1/8-7 NC-2A.
- 8007-21, COTTER, 1/4 X 1-3/4.
- 8007-22, NUT, Heavy Hex., ASA. Semi-finished & cadmium plated. Thread 1-1/8-7 UNC-2B.
- 8007-13, OILER, Alomite 1/4 inch, straight, drive fitting.

SHEET 1

**CONRAIL**  **CS-8007**

STANDARD  
**BOLTS**  
 FOR SWITCH LAYOUTS  
 OPERATED BY GRS SWITCH MACHINES  
 AUG. 6, 1976

Approved   
 Chief Engineer CBS