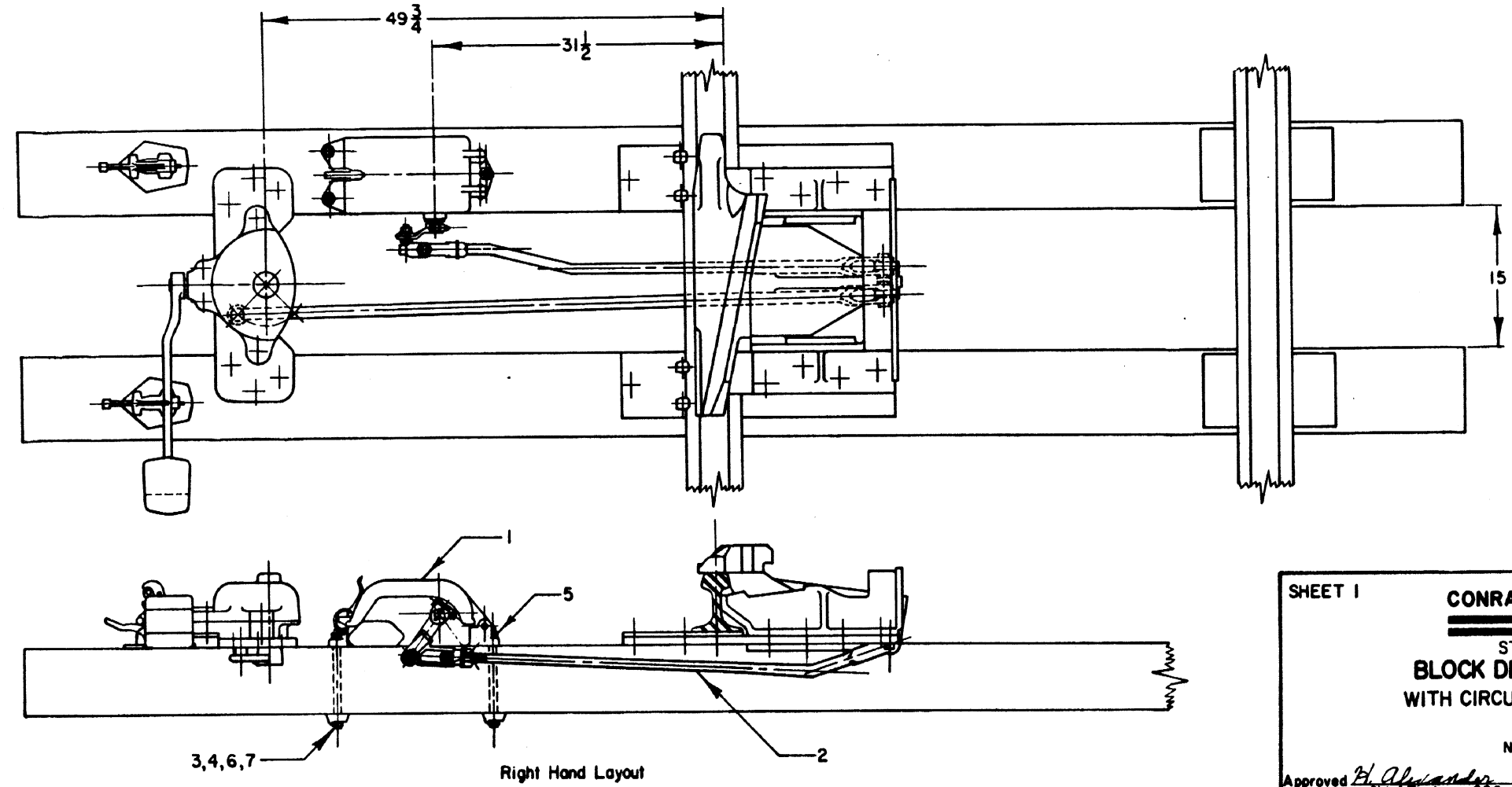



| NO | ITEM | REQ | REF | ACCT NO |
|----|---------------------------|-----|---------|------------|
| 1 | CIRCUIT CONTROLLER | 1 | | |
| 2 | CIRCUIT CONTROLLER ROD | 1 | 8005-10 | 02-450623 |
| 3 | NUT, SQ 3/4-10NC | 3 | | 19-514601 |
| 4 | BOLT, STUD 3/4-10NCX10 LG | 3 | | COMM. STD. |
| 5 | NUT, HEX 3/4-10NC | 3 | | 19-443603 |
| 6 | WASHER, LOCK- 3/4 MEDIUM | 6 | | 19-791209 |
| 7 | WASHER, CAST IRON | 3 | 82161 | 02-611257 |
| | | | | |
| | | | | |

NOTES:

1. Material not shown to be ordered by Maintenance of Way Department.
2. See MOW Standard Plan 73920 for additional details.



SHEET 1

CONRAIL  **CS-8012-A**

STANDARD
BLOCK DERAIL LAYOUT
 WITH CIRCUIT CONTROLLER

NOV. 4, 1982

Approved *B. Alexander*
 Chief Engineer CBS