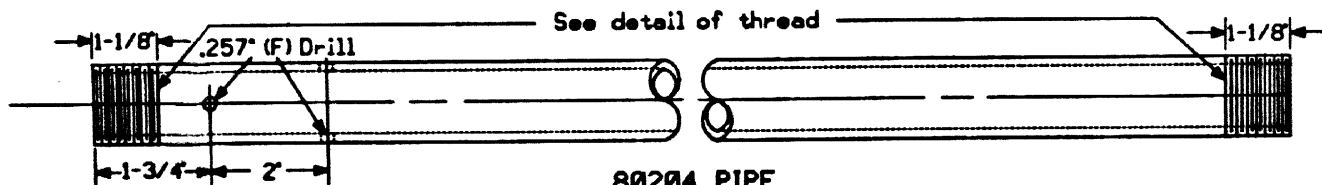
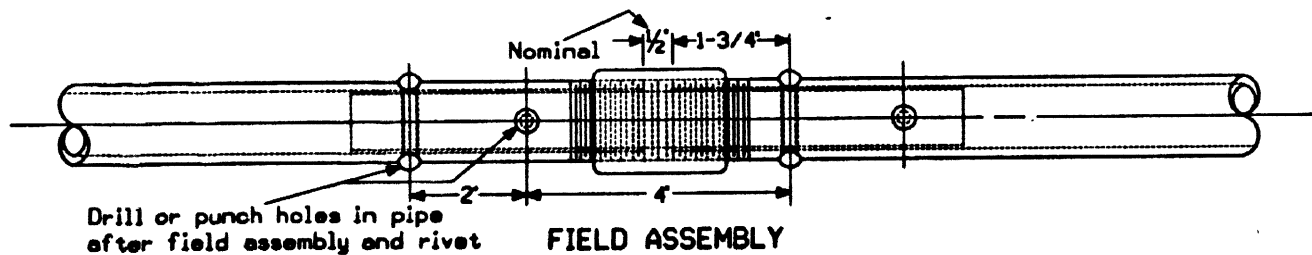


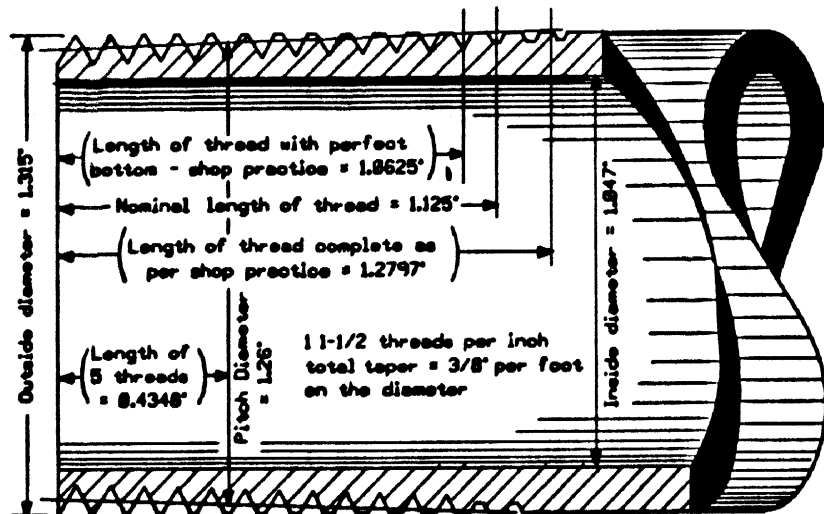
**80205 PIPE SECTION**  
Assembled 21' long pipe with plug & coupling



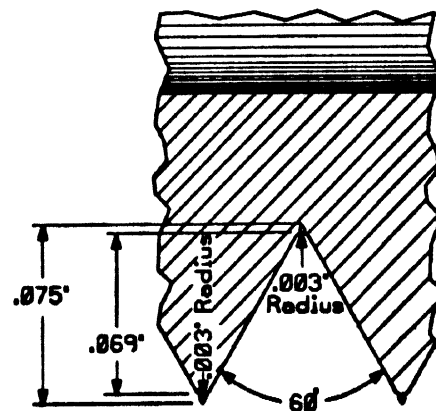
**80204 PIPE**  
(1 inch) steel - galvanized



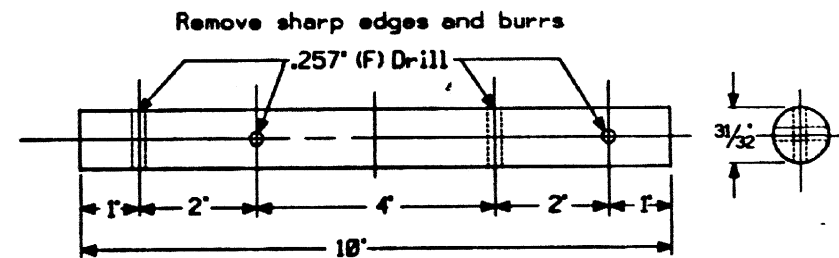
Drill or punch holes in pipe after field assembly and rivet  
**FIELD ASSEMBLY**



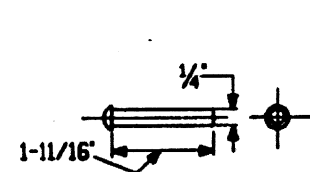
**DETAIL OF THREAD**



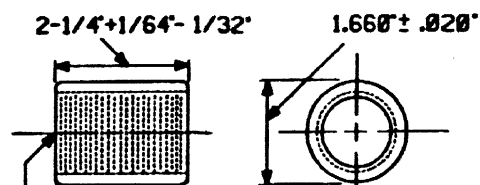
**SECTION OF PERFECT THREAD**



**80201 PLUG**  
Steel - galvanized



**80203 RIVET**  
Soft iron or steel - galvanized or cadmium plated.



**80202 COUPLING**  
Steel - galvanized  
Straight top, 11-1/2 threads per inch  
Pitch diameter = 1.26 ± .003  
Ends trimmed, slightly beveled to remove burrs.

**NOTES:**

1. Welded galvanized steel pipe, couplings, plugs, and rivets must conform to the AAR Manual Part 13.1.5 and 13.1.6, except pipe to be furnished in 21 foot lengths.

REFERENCE ACCOUNT NUMBERS			
80201	02-357901	80205	02-335501
80202	42-180305		
80203	19-568403		

SHEET 1

**CONRAIL** CS-8020

STANDARD  
**ONE INCH PIPE**  
FOR SIGNAL APPARATUS

Approved *[Signature]*  
Chief Engineer C&S

*[Signature]*  
Chief Engineering Officer

ISSUE DATE: SEPT. 24, 1906

REV. ---