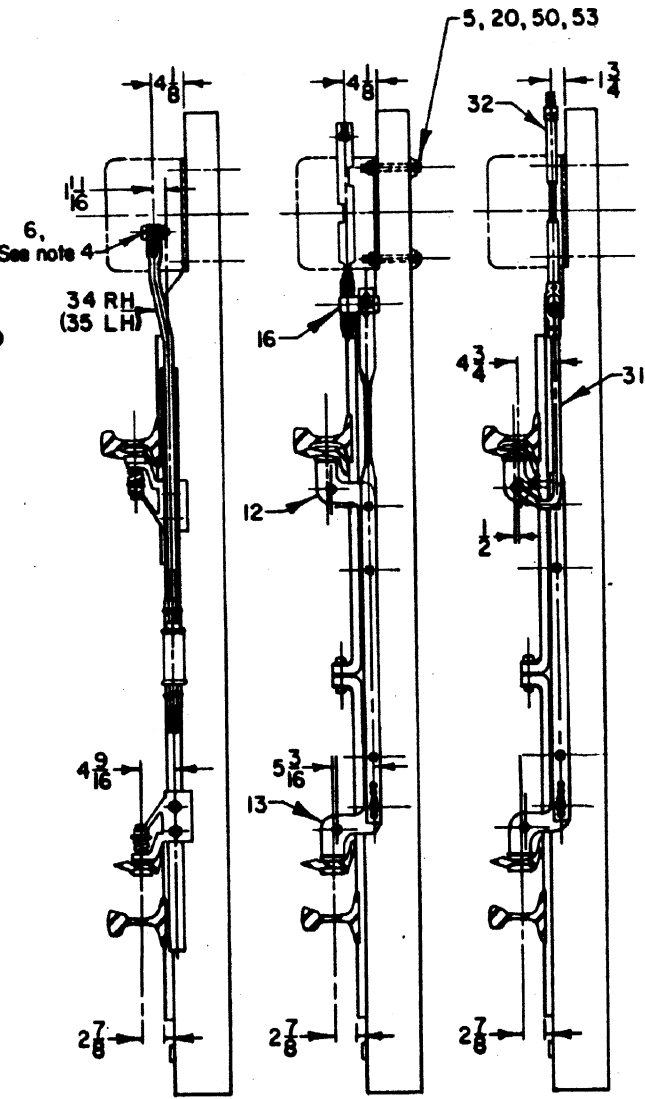



Right Hand Layout



NOTES:

1. Holes for Drive Spikes, Item 38 to be one-half inch in diameter and five inches deep.
2. This layout to be used for 11'-0", 16'-6", 26'-0", and 39'-0" switch points drilled in accordance with A.R.E.A. standards. For switch dimensions and information not shown on this plan, refer to Maintenance of Way plans for split switches, switch rods, and gage plates.
3. Switch points shown on this plan are 16'-6" long. Due to the bend in the gage plate, it is set back from the edge of the tie to insure that the gage plate bears fully on the tie at the bent stock rail end of the plate. Gage plates for 26'-0" and 39'-0" points, used at this location, are straight and the edge of the gage plate is set at the edge of the tie.
4. Bolt, item 6 is to be installed through operating rod and throw bar coupling with grease fitting on top, nut and cotter key on bottom.
5. This layout may be used with the auxiliary throw layout shown on plan CS-8222 for switches with 39 ft. conventional points, or 59 ft. 6 in welded points.

SHEET 1
CONT'D ON SH 2

CONRAIL  **CS-8210**

STANDARD
SWITCH LAYOUT
US&S MODEL A5 SWITCH MACHINE
119,132, & 140 LB. RAIL

APR. 30, 1962

Approved *B. Alexander*
Chief Engineer CBS