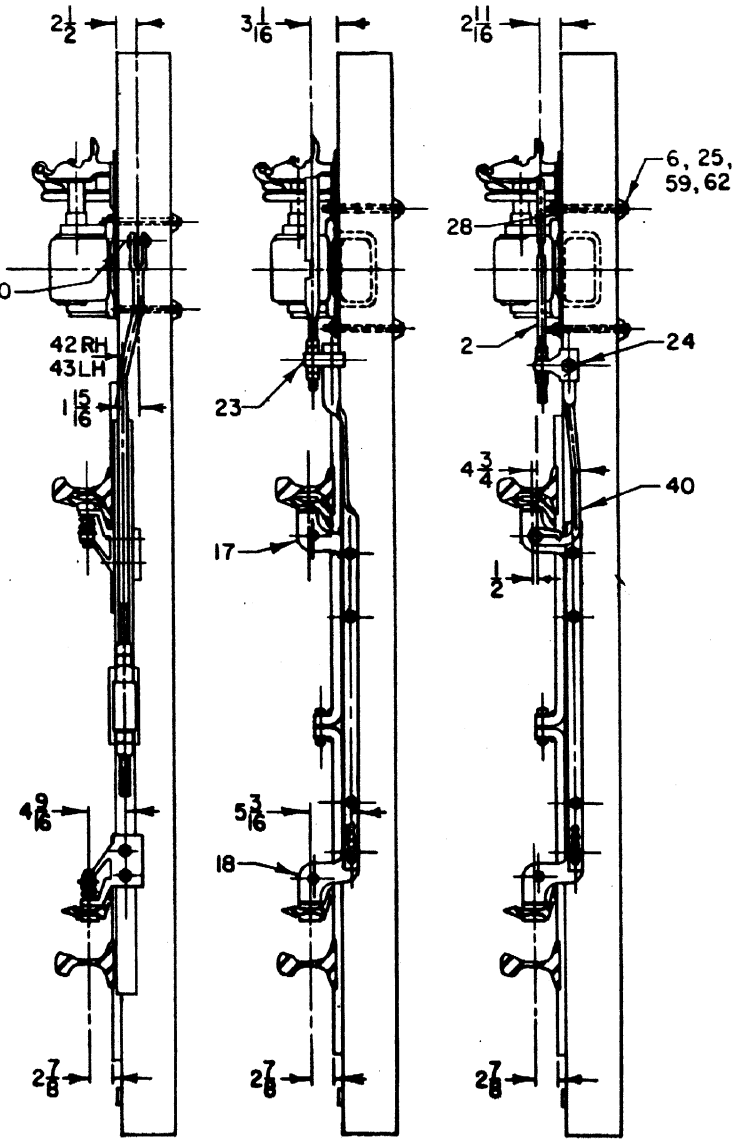



Right Hand Layout



NOTES:

1. Holes for drive spikes, item 46 to be one-half inch in diameter and five inches deep.
2. This layout to be used for 11'-0", and 16'-6" switch points drilled in accordance with A.R.E.A. standards. For switch dimensions and information not shown on this plan, refer to Maintenance of Way plans for split switches, switch rods, and gage plates.
3. Switch points shown on this plan are 16'-6" long. Due to the bend in the gage plate, it is set back from the edge of the tie to insure that the gage plate bears fully on the tie at the bent stock rail end of the plate.
4. Item 6 to be regular ASA double end stud bolt having 1/8" thread length each end.

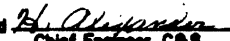
SHEET 1
CONT'D ON SH2

CONRAIL  CS-8224

STANDARD
SWITCH LAYOUT

US&S STYLE "T-20" SWITCH STAND
119, 132, & 140 LB. RAIL

SEPT. 14, 1982

Approved 
Chief Engineer C&S