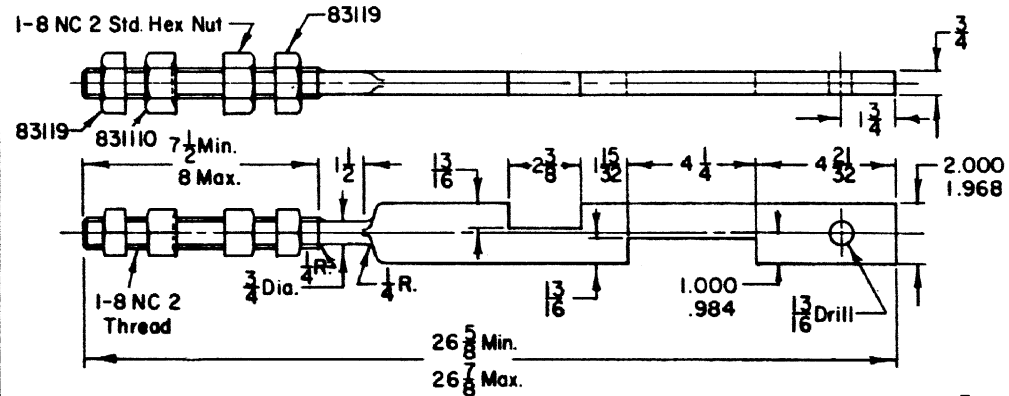
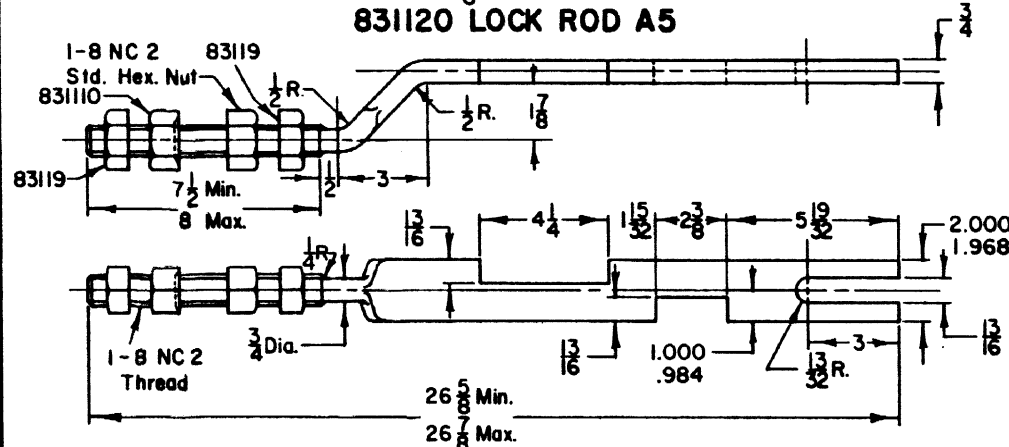


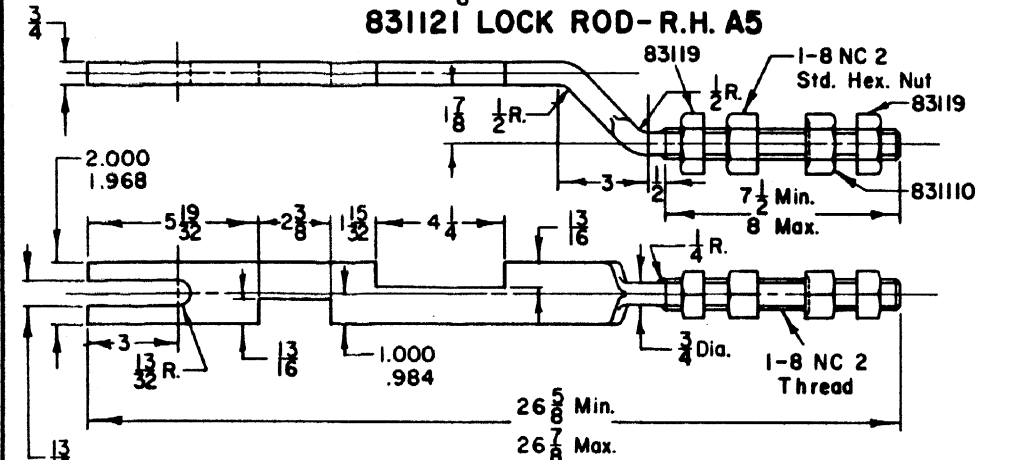
Rev. A-11-16-82: added item numbers 83112, 83113, 83123, 83124, 83125, 83126
 Rev. B-11-26-85: added ref. acct. no. 02-44507 & A5 to part description



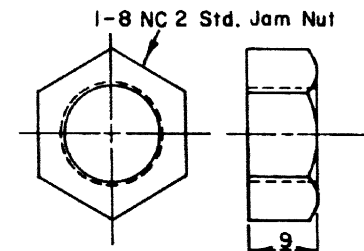
83119 LOCK ROD A5



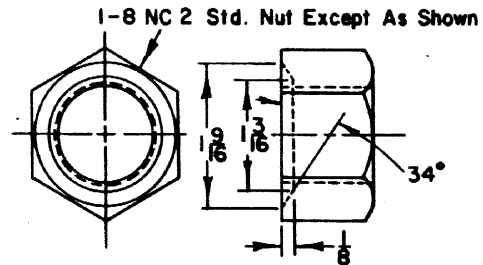
83120 LOCK ROD-R.H. A5



83121 LOCK ROD-L.H. A5



83119 NUT



83110 NUT

NOTES:

1. Lock rods to be of AISI-1035 steel. Heat to 1525-1576° F, quench in oil, temper to Rockwell C 25-28.
2. Nuts to be of C 1020 steel.

ACCOUNT REFERENCE NUMBERS

83119	19-476801
83110	02-310439
83112	02-
83113	02-445003
83120	02-445755
83121	02-443255
83122	02-443008
83123	02-441754
83124	02-443750
83125	02-443503
83126	02-441507

SHEET 1
 CONT'D ON SH 2

CONRAIL  **CS-8311-B**

STANDARD
LOCK ROD PARTS
 FOR USE WITH US&S A5 SWITCH MACHINES
 119, 132, & 140 LB. RAIL

APR. 10, 1980

Approved *H. Alexander*
 Chief Engineer CS&S

REV. NOV. 26, 1985