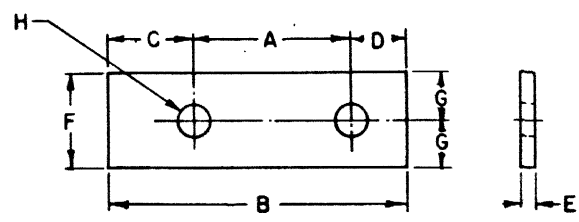
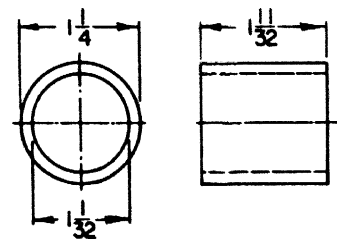


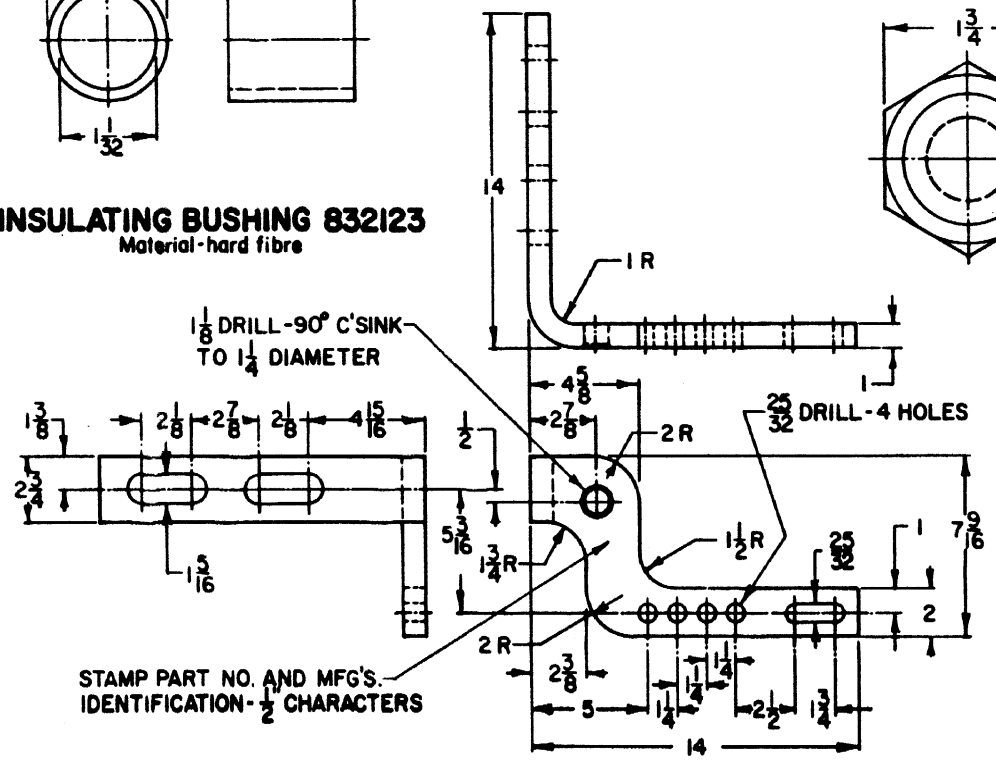
**FRONT ROD BAR 832126**  
Material - C1020 steel



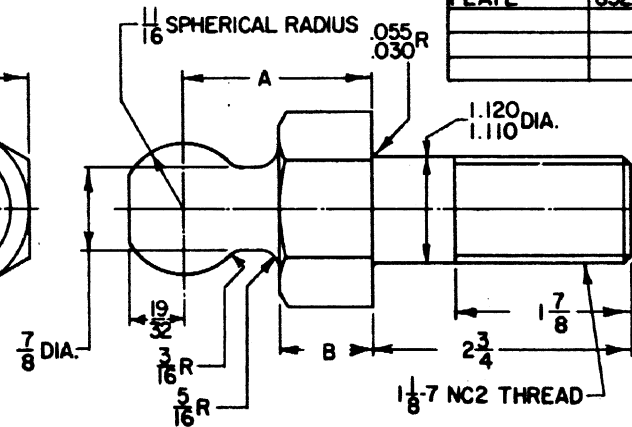
**STEEL & FIBRE PLATES**  
SEE TABLE BELOW

NAME	NUMBER	MATERIAL	A	B	C	D	E	F	G	H
PLATE, INNER	832121	hard fibre	5	9-1/2	2-3/4	1-3/4	3/16	3	1-1/2	1-9/32
PLATE, OUTER	832122	hard fibre	5	8	1	2	3/16	2-1/2	1-1/4	1-9/32
PLATE	832120	C1020 steel	5	7-3/4	7/8	1-7/8	1/4	2-1/4	1-1/8	1-1/16

**INSULATING BUSHING 832123**  
Material - hard fibre



**SWITCH FOOT 832118 LEFT HAND (SHOWN)**  
**SWITCH FOOT 832119 RIGHT HAND**  
Material - C1020 steel



**BALL STUD**  
Material - 1117 steel

NUMBER	A	B
832130	2	1
832131	3-3/8	2-1/8
832132	4-1/4	3

**NOTES:**

1. Upon completion of forming, forging, or welding, and before machining, steel parts must be normalized.
2. Fibre for insulating plates and bushings shall conform to AAR Manual part 58, and shall be fabricated in accordance with AAR Manual part 178, section applicable to plates, washers, and bushings.
3. Account reference numbers are listed on sheet 2.
4. Stamp manufacturer's name or trademark at locations shown.

SHEET 1  
CONT'D ON SH 2

**CONRAIL** **CS-8321-B**

STANDARD  
**FRONT ROD PARTS**  
FOR USE WITH US&S SWITCH MACHINES  
119, 132, & 140 LB. RAIL  
APR. 10, 1980

Approved: *H. Alexander*  
Chief Engineer CAS