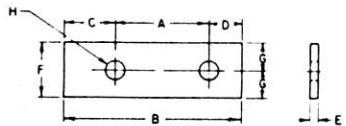
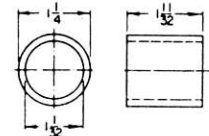


FRONT ROD BAR 832126
 Material - C1020 steel

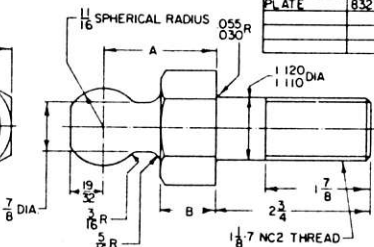


STEEL & FIBRE PLATES
 SEE TABLE BELOW

NAME	NUMBER	MATERIAL	A	B	C	D	E	F	G	H
PLATE INNER	832121	hard fibre	5	9-1/2	2-3/4	1-3/4	3/16	3	1-1/2	1-9/32
PLATE OUTER	832122	hard fibre	5	8	1	2	3/16	2-1/2	1-1/4	1-9/32
PLATE	832120	C1020 steel	5	7-3/4	7/8	1-7/8	1/4	2-1/4	1-1/8	1-1/16



INSULATING BUSHING 832123
 Material - hard fibre

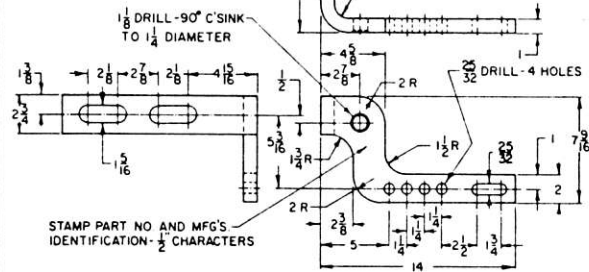


BALL STUD
 Material - 1117 steel

NUMBER	A	B
832130	2	1
832131	3 3/8	2-V/8
832132	4-1/4	3

NOTES:

- 1 Upon completion of forming, forging, or welding, and before machining, steel parts must be normalized.
- 2 Fibre for insulating plates and bushings shall conform to AAR Manual part 5B, and shall be fabricated in accordance with AAR Manual part 17B, section applicable to plates, washers, and bushings.
- 3 Account reference numbers are listed on sheet 2
- 4 Stamp manufacturer's name or trademark at locations shown



SWITCH FOOT 832118 LEFT HAND (SHOWN)
SWITCH FOOT 832119 RIGHT HAND
 Material - C1020 steel

SHEET 1
 CONT'D ON SH 2



CS-8321-B

STANDARD
FRONT ROD PARTS
 FOR USE WITH USBS SWITCH MACHINES
 119, 132, B 140 LB RAIL

APR 10, 1980

Approved: *[Signature]*
 Chief Engineer C&S