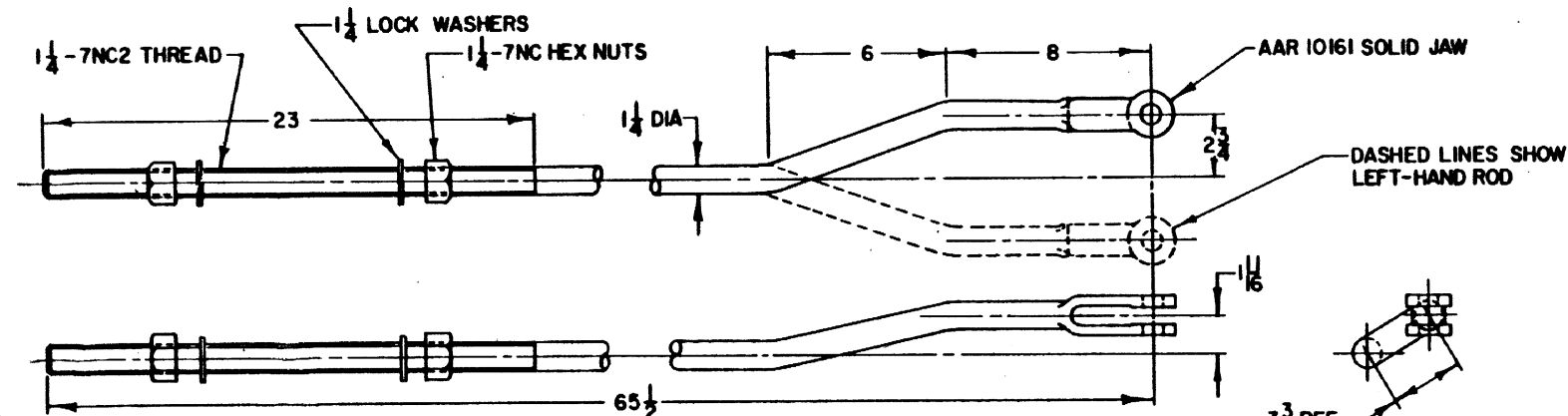
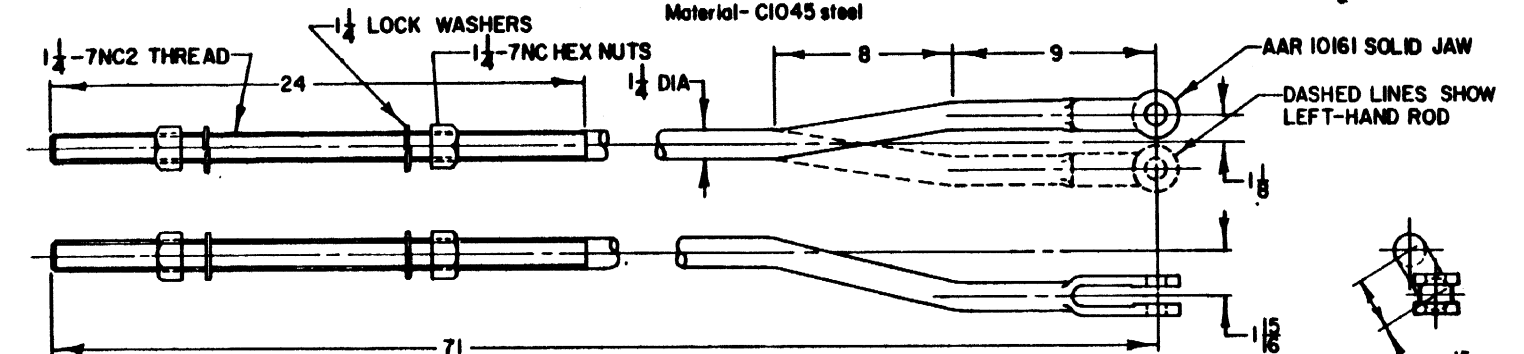


OPERATING ROD, R.H. 833132 (SHOWN)
OPERATING ROD, L.H. 833133
 Material - C1045 steel



OPERATING ROD, R.H. 833127 (SHOWN)
OPERATING ROD, L.H. 833128
 Material - C1045 steel



OPERATING ROD, R.H. 833129 (SHOWN)
OPERATING ROD, L.H. 833130
 Material - C1045 steel

NOTES:

1. Upon completion of forming, forging, or welding, and before machining, steel parts must be normalized.

ACCOUNT REFERENCE NUMBERS

833132	02-448304	833128	02-453007
833133	02-448353	833129	02-453205
833127	02-452751	833130	02-453304

SHEET 1

CONRAIL  **CS-8331-B**

STANDARD
OPERATING RODS
 FOR USE WITH US&S SWITCH MACHINES
 119,132, & 140 LB. RAIL

APR. 10, 1980

Approved *H. Alexander*
 Chief Engineer C&D