

— NOTES —

1. Where beading is required to insure shunting sensitivity on light density lines, apply as shown in Fig. A at each end of the track circuit.
2. Where beading is required on an island circuit at a highway grade crossing, apply as shown in Fig. B for the entire length of the track circuit.
3. Where beading is required within interlocking limits, apply as shown in Fig. B for the entire length of the track circuit.
4. Beading is to be applied to the top surface of the rail. Before application, the rail must be clean and dry. The top surface of the rail must be ground clean with a vitrified bond grinding wheel to remove rust and scale to insure adherence of weld metal.
5. Beading to consist of Cadweld rail shunt metal, or equal, applied by use of proper mold, and thermit process. Locate mold toward gage side of railhead.
6. All dimensions in feet.

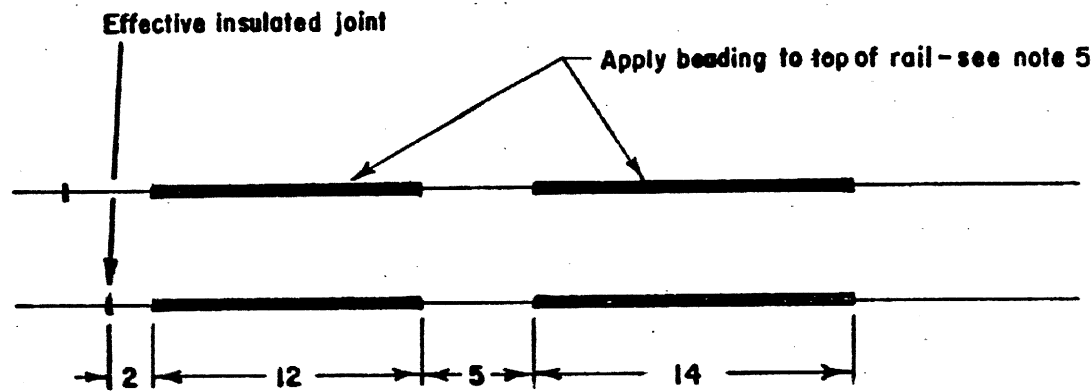


FIGURE A

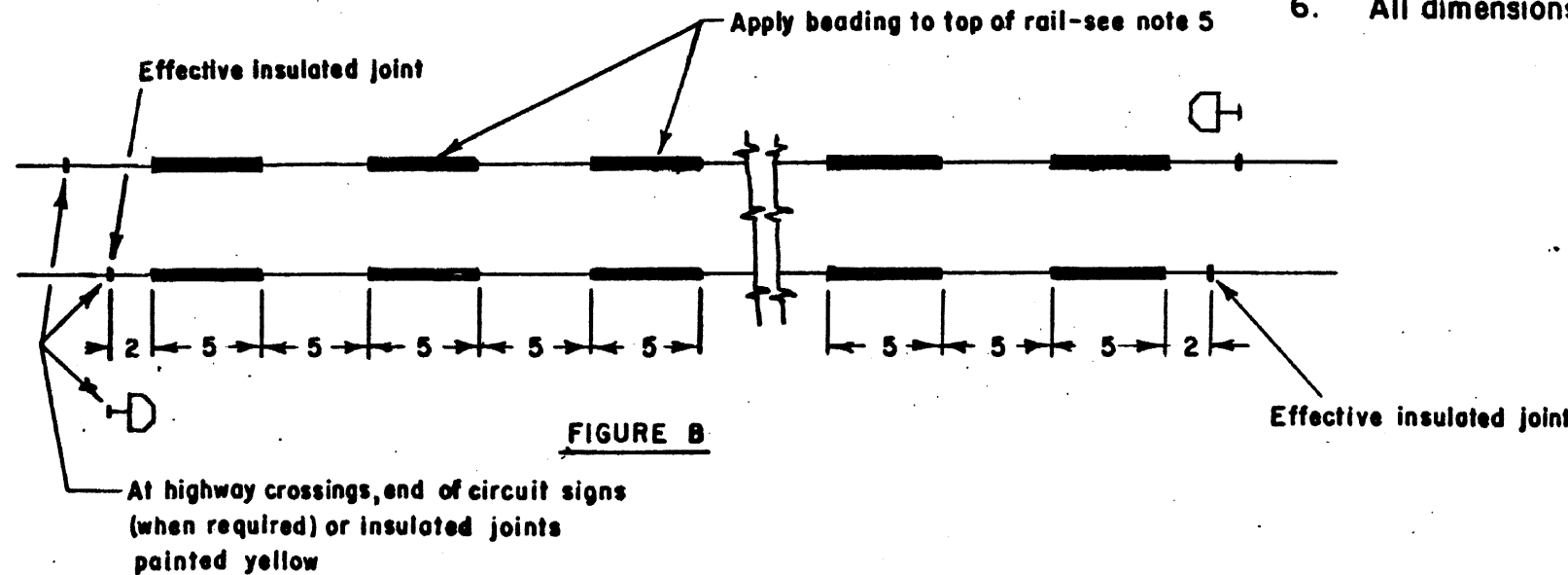




FIGURE B

SHEET 1


CONRAIL **CS-9010**
 STANDARD

INSTRUCTION FOR APPLICATION OF RAILHEAD
 BEADING TO IMPROVE TRACK CIRCUIT SHUNTING
 JUL 7, 1980

APPROVED 
 CHIEF ENGINEER SCBS