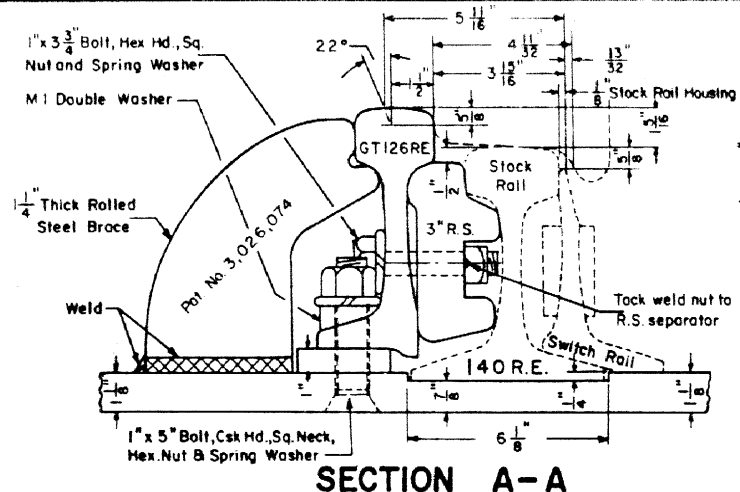


SECTION A-A



SECTION A-A

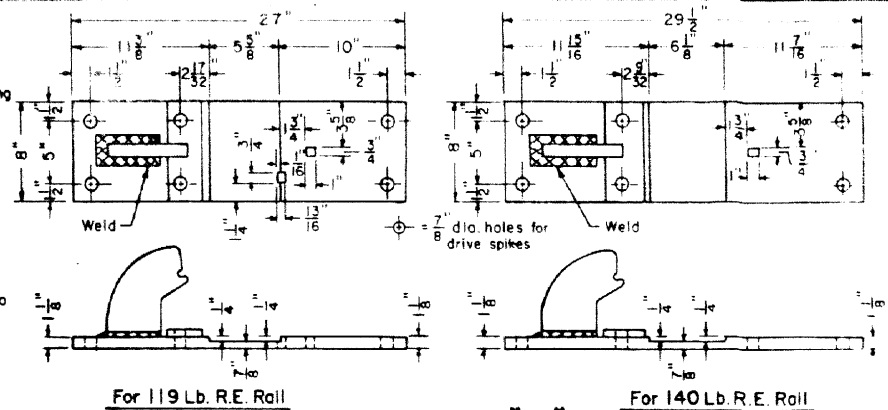
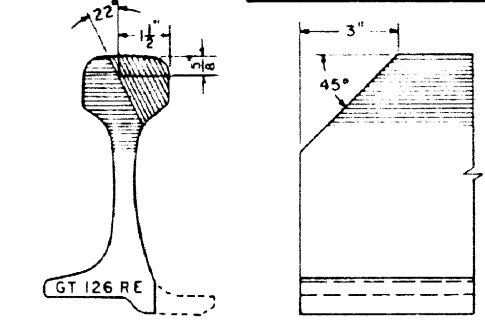
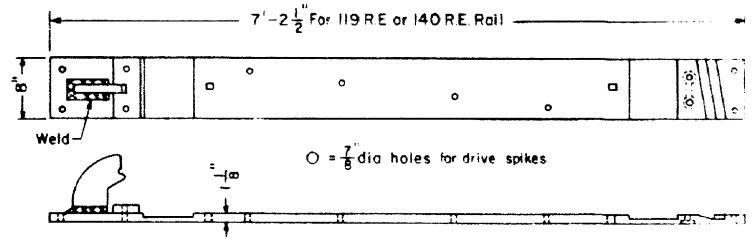
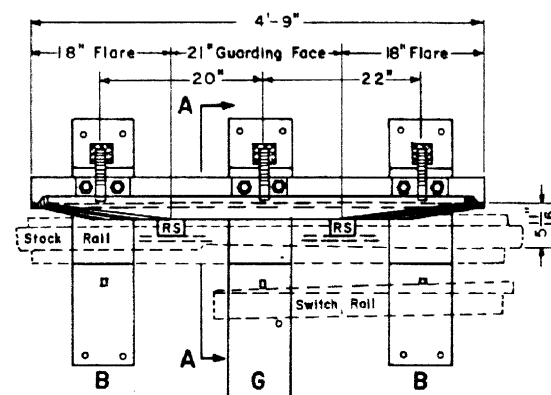
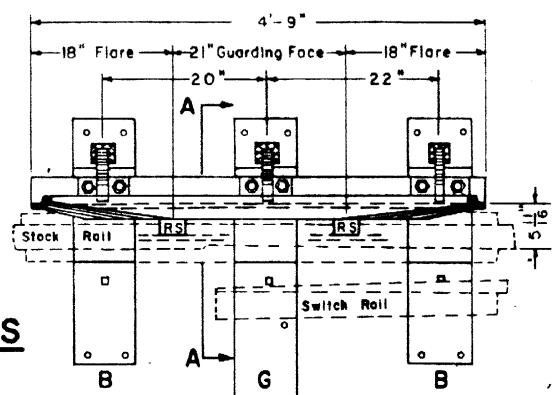


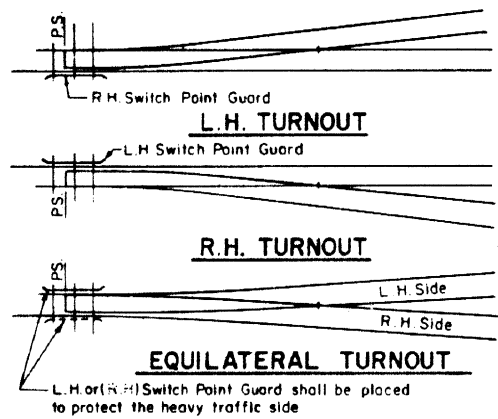
PLATE "B"



PLANING OF ALL GUARD ENDS



GAGE PLATE "G" NON-INSULATED FOR TYPE "C"

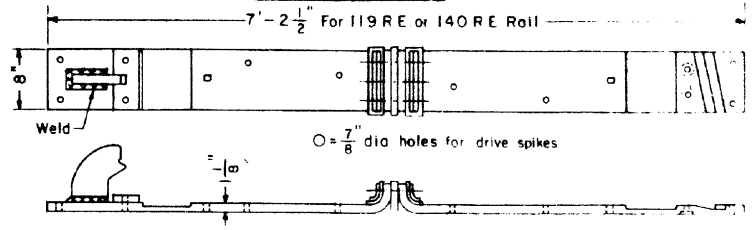


NOTE - All switch point guards are located to protect the diverging point.
SWITCH POINT GUARD DESIGNATIONS

All plates to be open hearth steel with 0.40 to 0.60 carbon.
All guard rails heat treated and oil quenched to a Brinell Hardness of 321 to 375.

TYPE "B" INSULATED
L.H. Switch Point Guard
For R.H. Turnout - As Shown

TYPE "C" NON-INSULATED
L.H. Switch Point Guard
For R.H. Turnout - As Shown



GAGE PLATE "G" INSULATED FOR TYPE "B"

CONRAIL W-222-A

SWITCH POINT GUARDS
FOR 119 R.E. and 140 R.E. RAILS

MADE BY BETHLEHEM STEEL CORPORATION
STEELTON, PA. SEPTEMBER, 1976

R.H. Smith
Chief Engineer - Maintenance of Way

A.P. Young
Chief Engineering Officer