

---

# ConRail

---

MAINTENANCE PROGRAM

AND

TRACK CHART

CENTRAL  
REGION

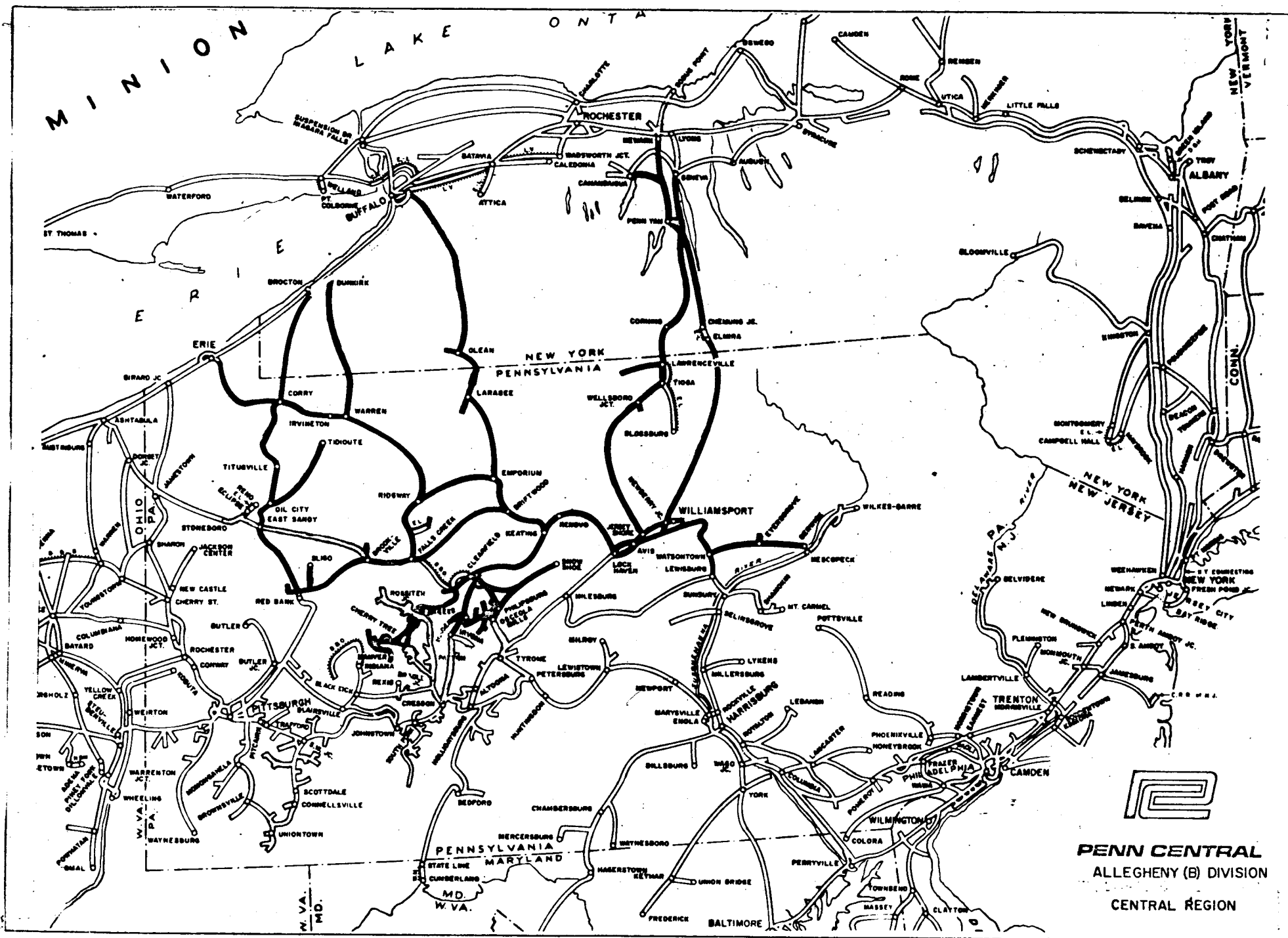
ALLEGHENY-B  
DIVISION

CORRECT TO 1-1-76

<u>NAME</u>	<u>BETWEEN</u>	<u>M.P. TO M.P.</u>	<u>CODE</u>
MAIN (HBG - BUFLO)	GRAVITY, EMPORIUM & MONTANDON	8.4 - 278.0	2314 -
AVIS BRANCH	JERSEY SHORE, CP BN & "RICH"	0.0 - 5.5	2320
BALD EAGLE VALLEY BRANCH	POST & LOCK HAVEN	52.0 - 54.3	2321
BIGLER INDUSTRIAL TRACK	BIGLER & WOODLAND	31.5 - 34.7	2348**
BOARDMAN INDUSTRIAL TRACK	POTTS RUN JCT. & TERMINUS	0.0 - 1.4	2356
BROOKVILLE INDUSTRIAL TRACK	BROOKVILLE & END	0.0 - 1.4	2398
CT & D SECONDARY	CHEERY TREE & DIXONVILLE	0.0 - 20.8	2390
CHAUTAUQUA SECONDARY	BROCTON & CORRY	50.3 - 93.9	2327
CHERRY TREE SECONDARY	CB JCT. & CHERRY TREE	0.0 - 35.8	2359
CLERMONT INDUSTRIAL TRACK	LARABEE & CORRYVILLE	0.0 - 9.2	2338
CORNING SECONDARY	GENEVA & NEWBERRY JCT.	17.1 - 180.9	2322
CORRY SECONDARY	LOVE & SPRING	33.7 - 44.5	2315
DUNKIRK INDUSTRIAL TRACK	DUNKIRK & FREDONIA	0.0 - 3.7	2340
EAST BRADY TRACK	PHILLIPSTON & EAST BRADY	0.0 - 3.2	2330
ELKLAND INDUSTRIAL TRACK	CV JCT. & ELKLAND (O.S.)	0.0 - 11.5	2343
ELMIRA SECONDARY	NEWBERRY & ELMIRA	1.2 - 75.5	2317
EMPORIUM SECONDARY	SPRING & EMPORIUM	44.5 - 150.0	2315
ERIE SECONDARY	ERIE, "ELM" & LOVE	2.9 - 33.7	2315
FARMERS VALLEY INDUSTRIAL TRK.	CORRYVILLE & TERMINUS	81.1 - 85.0	2339*
GRAMPIAN INDUSTRIAL TRACK	CLEARFIELD & GRAMPIAN	40.3 - 52.8	2348**
GRASS FLAT INDUSTRIAL TRACK	VIADUCT & GRASS FLAT (O.S.)	0.0 - 2.9	2357
HOOVERHURST INDUSTRIAL TRK.	DOWLER JCT. & TERMINUS	7.3 - 11.1	2362
KEATING CONNECTING BRANCH	W. KEATING & KEATING	180.5 - 183.0	2314
LOOP CUT-OFF TRACK	CONNECTING TRACK FLEMING SUMMIT AND PURCHASE LINE	0.0 - 1.2	2391
LOW GRADE SECONDARY	RED BANK, FALLS CREEK & DRIFTWOOD	0.0 - 109.9	2324
MADERA INDUSTRIAL TRACK	CLEARFIELD JCT., DIMELING & IRVONA	0.0 - 30.9	2353
MAHAFFEY INDUSTRIAL	MAHAFFEY JCT., MAHAFFEY & WJ	112.3 - 113.1	2337
MANVER SECONDARY	WANDIN & HEILWOOD	0.0 - 7.2	2393
MAPLETON TRACK	MAPLETON JCT. & TERMINUS	0.0 - 0.5	2385
MILL HALL INDUSTRIAL TRACK	AVIS BR. & BALD EAGLE JCT.	4.9 - 14.0	2320
MILLS INDUSTRIAL TRACK	OSCEOLA MILLS & WALLACETON	19.1 - 29.9	2348**
MILLVILLE TRACK	EYERSGROVE & MILLVILLE	0.0 - 2.7	2332
MOSHANNON & CLEARFIELD IND. TRK.	COAL RUN JCT. & END	0.0 - 7.7	23MB
MOSHANNON INDUSTRIAL TRACK	OSCEOLA MILLS & MADERA	0.0 - 14.6	2385
MUDDY RUN INDUSTRIAL TRACK	SMOKE RUN & TERMINUS	0.0 - 2.8	23MK
OIL CITY INDUSTRIAL TRACK	OIL CITY, BRIDGE & TIDIOUTE	0.0 - 35.4	2328
OIL CITY SECONDARY	RED BANK, SO. OIL CITY & BRIDGE	63.4 - 120.0	2329
PENN YAN INDUSTRIAL TRACK	DRESDEN & PENN YAN	0.0 - 6.4	2342
PHILLIPSBURG INDUSTRIAL TRACK	MUNSON & PHILLIPSBURG	0.0 - 7.1	2351
RIDGWAY INDUSTRIAL TRACK	RIDGWAY & NP 2.0	0.0 - 2.0	2325
RIDGWAY INDUSTRIAL TRACK	BROCKWAY & FALLS CREEK	19.0 - 27.3	2325
SAMPLE RUN INDUSTRIAL TRACK	CLYNER & TERMINUS	0.0 - 2.0	2395
SENECA INDUSTRIAL TRACK	STANLEY & DIV. POST. (NEWARK)	0.0 - 16.3	2319
SHANKTOWN INDUSTRIAL TRACK	SHANKTOWN & TERMINUS	0.0 - 0.9	2392
SLIGO INDUSTRIAL TRACK	LAWSONHAM & SLIGO	0.0 - 10.5	2326
SNOW SHOE SECONDARY	SNOW SHOE, WALLACETOWN & CLEARFIELD	45.5 - 87.9	2349
TITUS SECONDARY	CORRY & OIL CITY	93.9 - 138.7	2327
WARREN INDUSTRIAL TRACK	FALCONER & WARREN	32.1 - 54.1	2340
WATKINS GLEN SECONDARY	HORSEHEADS (HO) & STANLEY	0.0 - 52.2	2318
WATSONTOWN SECONDARY	WATSONTOWN & BERWICK	0.0 - 38.7	2331
WELLSBORO INDUSTRIAL TRACK	WELLSBORO JCT. & WELLSBORO	0.0 - 3.9	2344
WEST BRANCH VALLEY SECONDARY	CLEARFIELD, KARTHAUS & KEATING	1.4 - 53.5	2358
WILLIAMSPORT BRANCH	LINDEN, NEWBERRY & WILLIAMSPORT	242.5 - 249.3	2316
WINBURNE INDUSTRIAL TRACK	WINBURNE & TERMINUS	0.0 - 1.9	23MN
VALLEY BRANCH	FREDONIA & FALCONER (O.S.)	3.7 - 32.1	2340

\* See 2338 Clermont Secondary

\*\* Formerly Clearfield Secondary



ALLEGHENY (B) DIVISION MAP

# PROGRAM LEGEND

DATE OF CONDITION PRECEDES CODE (If Known)  
CONDITIONS C O D E S

GRINDING	(No. of Passes)
WELDING	E = Electric TW = Thermit Weld G = Gas
SURFACING	Machines M = Matisa R = Railway Maint. Corp. W = McWilliams J = Jackson P = Pullman (Mainly on Branch Lines) P = Plasser E = Electromatic EM = Electromatic & Electromatic Jr. T = Tamper
TIES	(Year Installed Only) ST = SAFETY TIES
BARS	HF & HFT = Head Free Toeless Other Types HFF = Head Free Flange K4 WC = Crowned Oversize K6 W = Oversized K8 S = Short Bar or 24" Bar K24 SH = Second Hand
RAIL	W = Welded (Designated by Cross-Hatching) F = Fit C = Cropped M = Modified MM = Med. Mang T = Transposed
(See Note Below)	
BAL. CLEANING	S = Speno L = Loram B = Brownhoist P = Pullman N = Nordberg M = Mannix
JOINT STRAIGHTENER	(Year Worked On)

NOTE: On rail weights of over 100 lbs., the number 1 is dropped.

EXAMPLE: 140 lbs. would be written 40.

The rail weights will precede the year of rail.

EXAMPLE: 131 - 1942 would be written 31-42.

Welded rail will be followed with the letter "W".

EXAMPLE: 40-68W.

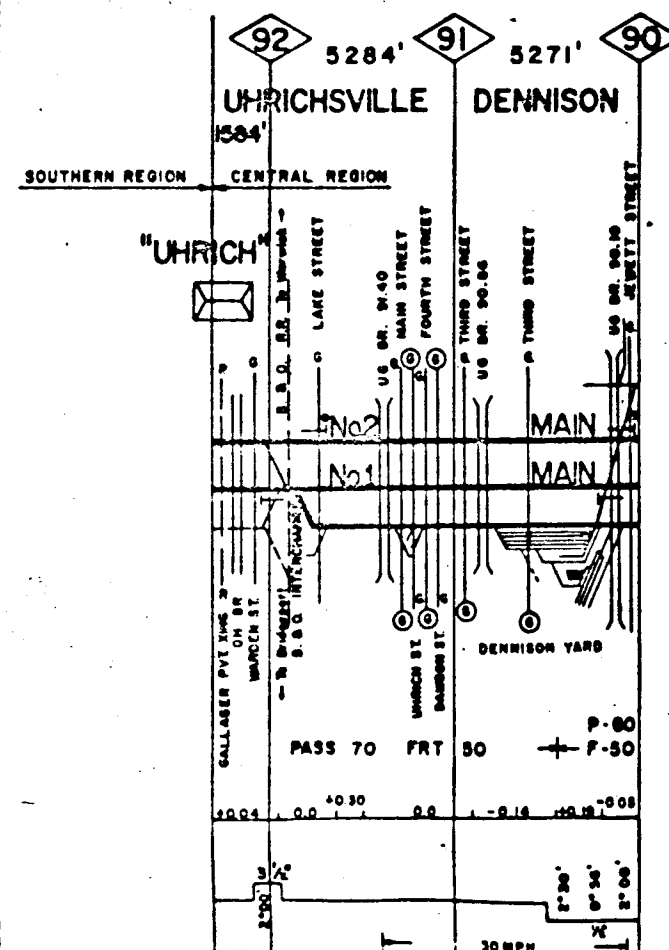
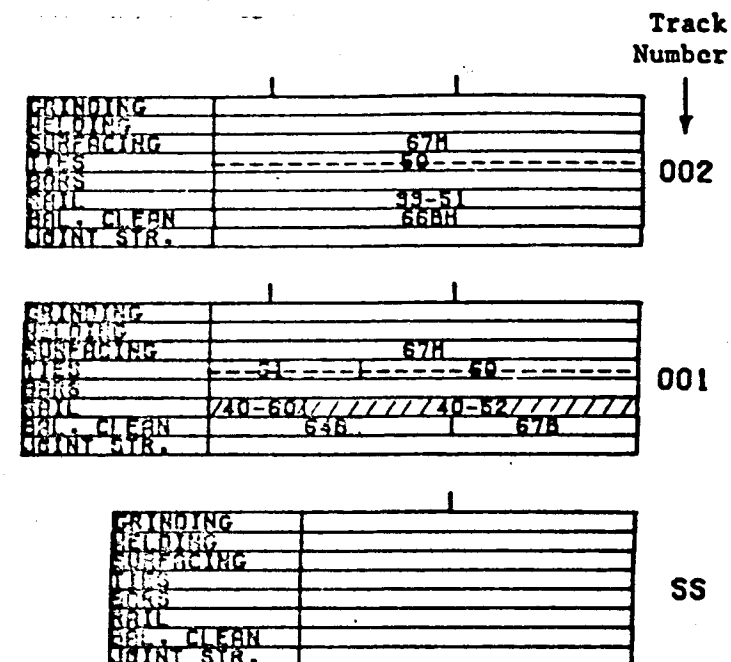
MAINTENANCE PROGRAMMED WORK TO BE DONE THIS YEAR IS DESIGNATED  
WITH DASHED LINES.

## CHART LEGEND

INTERLOCKING TOWER	INT
INTERLOCKING	INT
BLOCK STATION	BS
BLOCK LIMIT STATION	BL
REMOTE CONTROLLED SWITCHES	RC
TRAIN ORDER DELIVERY STAFF	YDS
PUBLIC ROAD XING (GRADE)	R
" " " " With Flashers	R/F
" " " " With Flashers & Gates	R/F/G
" " " " With Watchman	R/W
PRIVATE ROAD XING (GRADE)	P

YARD LIMIT BOARD	YLB
TUNNEL	T
OVERHEAD BRIDGE	OB
UNDERGRADE BRIDGE	UB
POSITION LIGHT SIGNAL	PLS
DRAWING EQUIPMENT DETECTOR	DED
SPRING SWITCHES	SS
HOT BOX DETECTOR (Pointing direction of traffic)	HBD
STATE, COUNTY & TOWNSHIP LINES	SCL
TELEPHONE (Booth or Box)	T
CURVE LUBRICATOR	CL

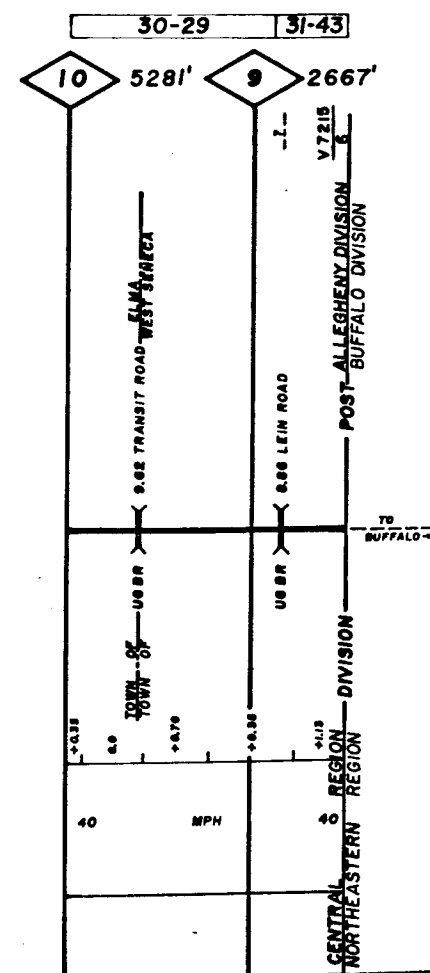
## TYPICAL CHART



5

GRINDING	
WELDING	
SURFACING	23E
TIES	73
RAILS	
RAIL	30-29 31-43
RAIL - CLEAN	64B
JOINT STR.	

007

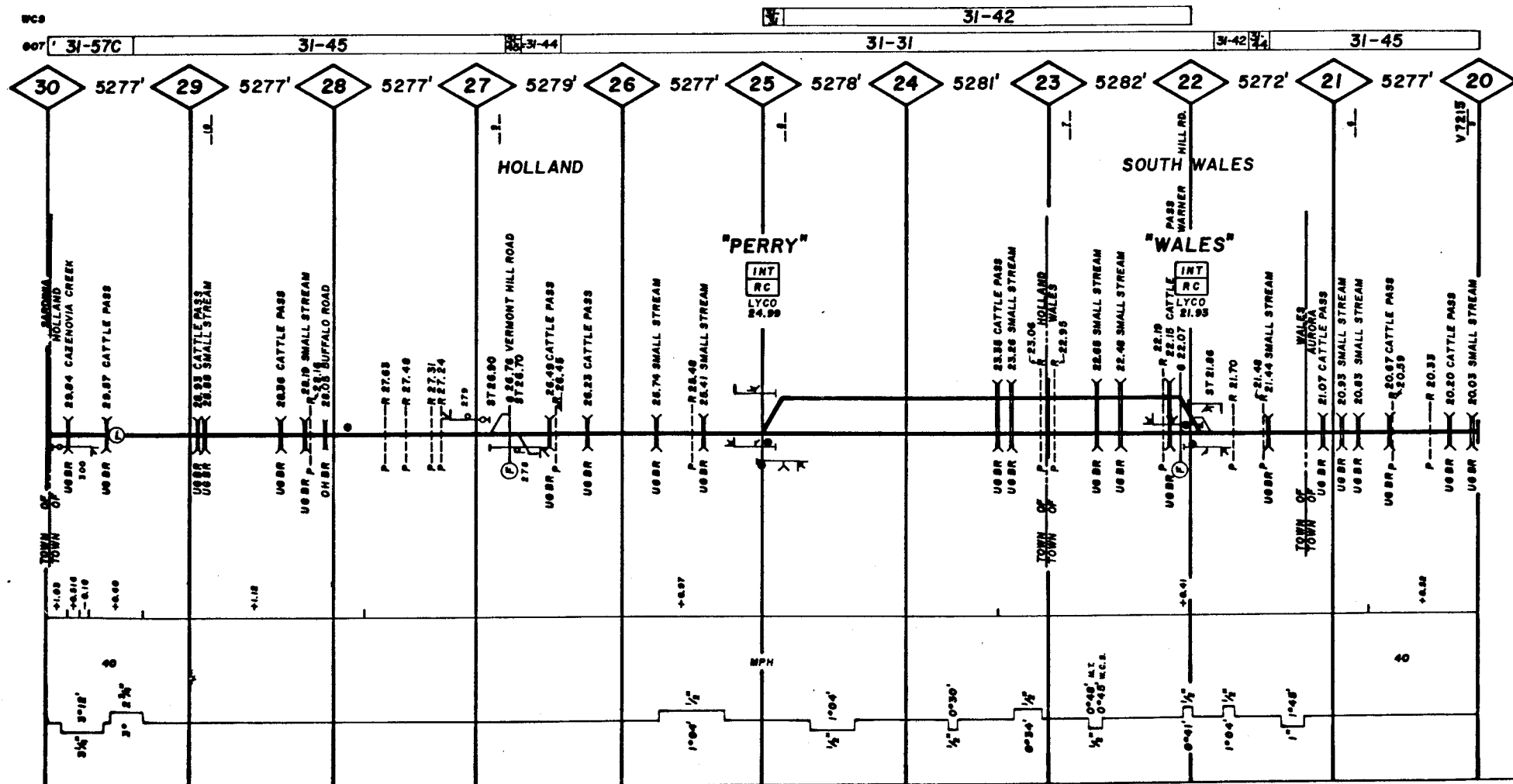
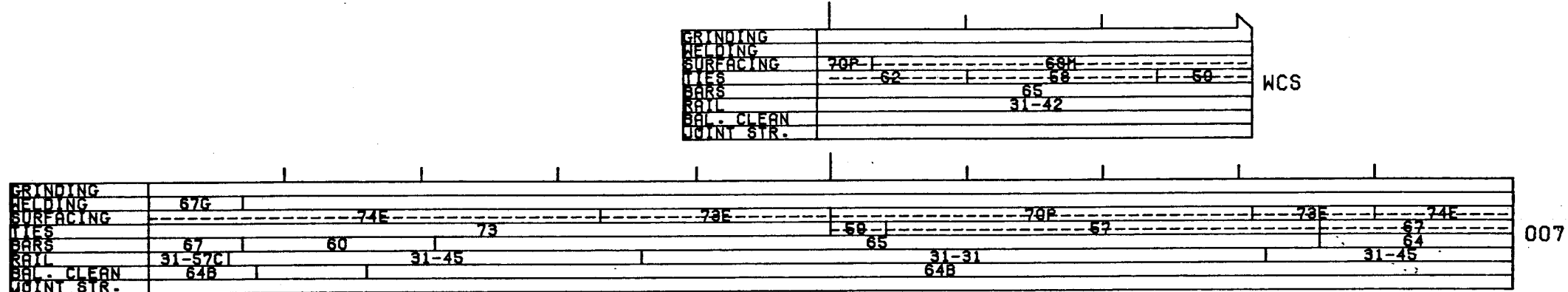


SUB-DIVISION #6 SUPERVISOR  
OLEAN, N. Y. M.P. 8.4

2-3-14 CENTRAL REG. MAIN LINE BFLO.-HBG. MP 8.4-MP 10.0



7



SUB-DIVISION #6 SUPERVISOR  
OLEAN, N.Y.

2-3-14 CENTRAL REG. MAIN LINE BFLG.-HBC. MP 20.0-MP 30.0





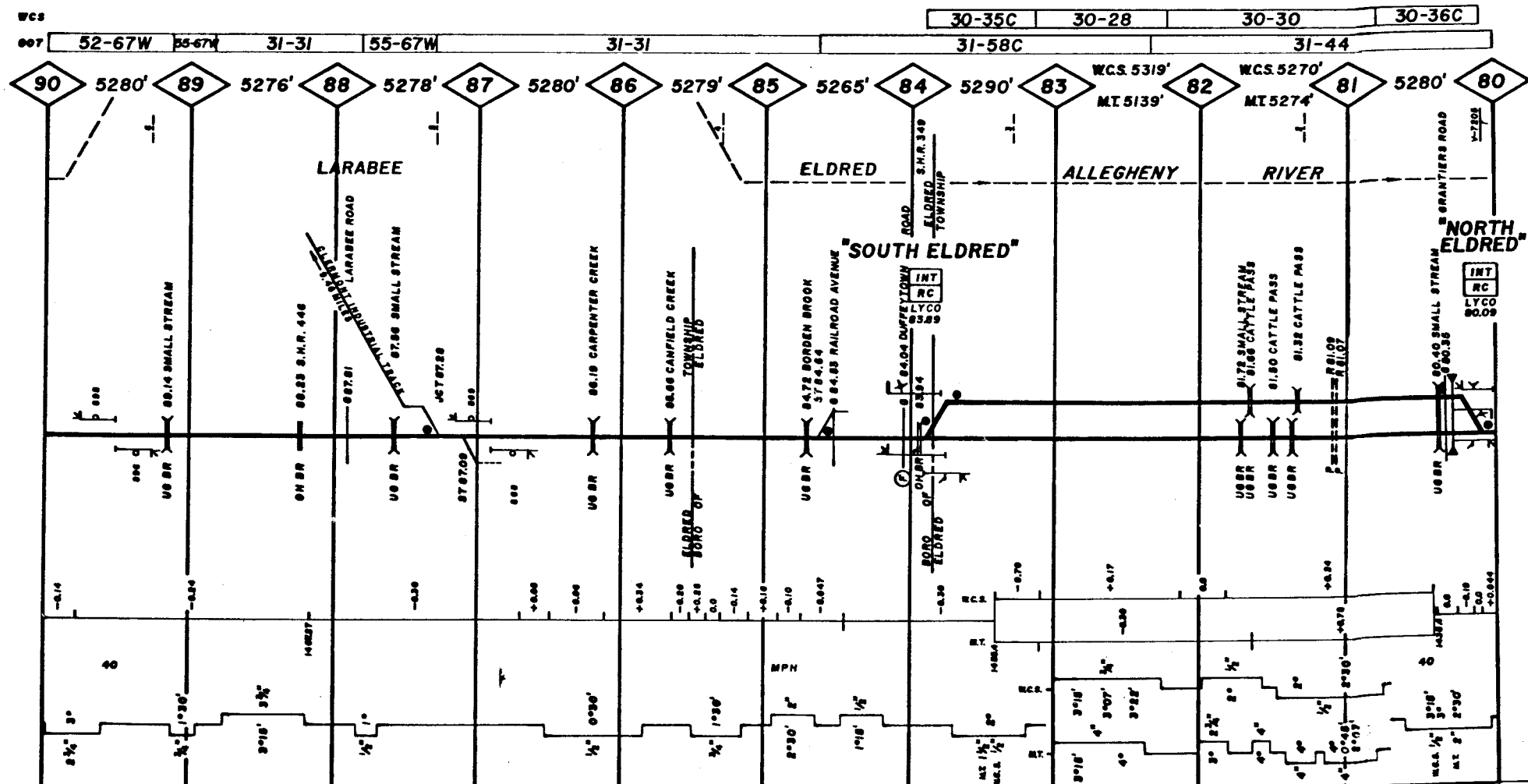






13

GRINDING	68	65E	75E	
WELDING	74E			
SURFACING	67	66	68	66
TIES	52-67	31-31	31-31	31-58C
BARS				
RAIL				
RAIL - CLEAN				
JOINT STR.				



SUB-DIVISION #6 SUPERVISOR  
OLEAN, N.Y.

2-3-14 CENTRAL REG. MAIN LINE BFLD.-HBG. MP 80.0-MP 90.0





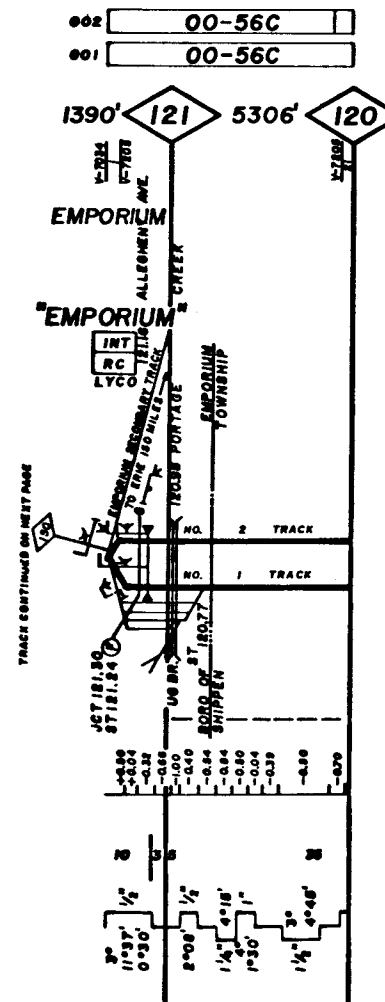


GRINDING	
WELDING	
SURFACING	71
TIRES	753T
BAR	
RAIL	00-56C
RAIL - CLEAN	688 648
JOINT STR.	

002

GRINDING	
WELDING	
SURFACING	69M 74E
TIRES	63 74
BAR	
RAIL	00-56C
RAIL - CLEAN	688
JOINT STR.	

001













GRINDING	68G	70G	68G
WELDING		75E	
SURFACING	74	70	75
TIES			
BAR	52-62F	52-45F	52-46F
RAIL	77 27F 74V	75H	31-45
RAIL CLEAN			
JOINT STR.			

007

GRINDING	
WELDING	
SURFACING	71E
TIES	
BAR	
RAIL	
RAIL CLEAN	
JOINT STR.	

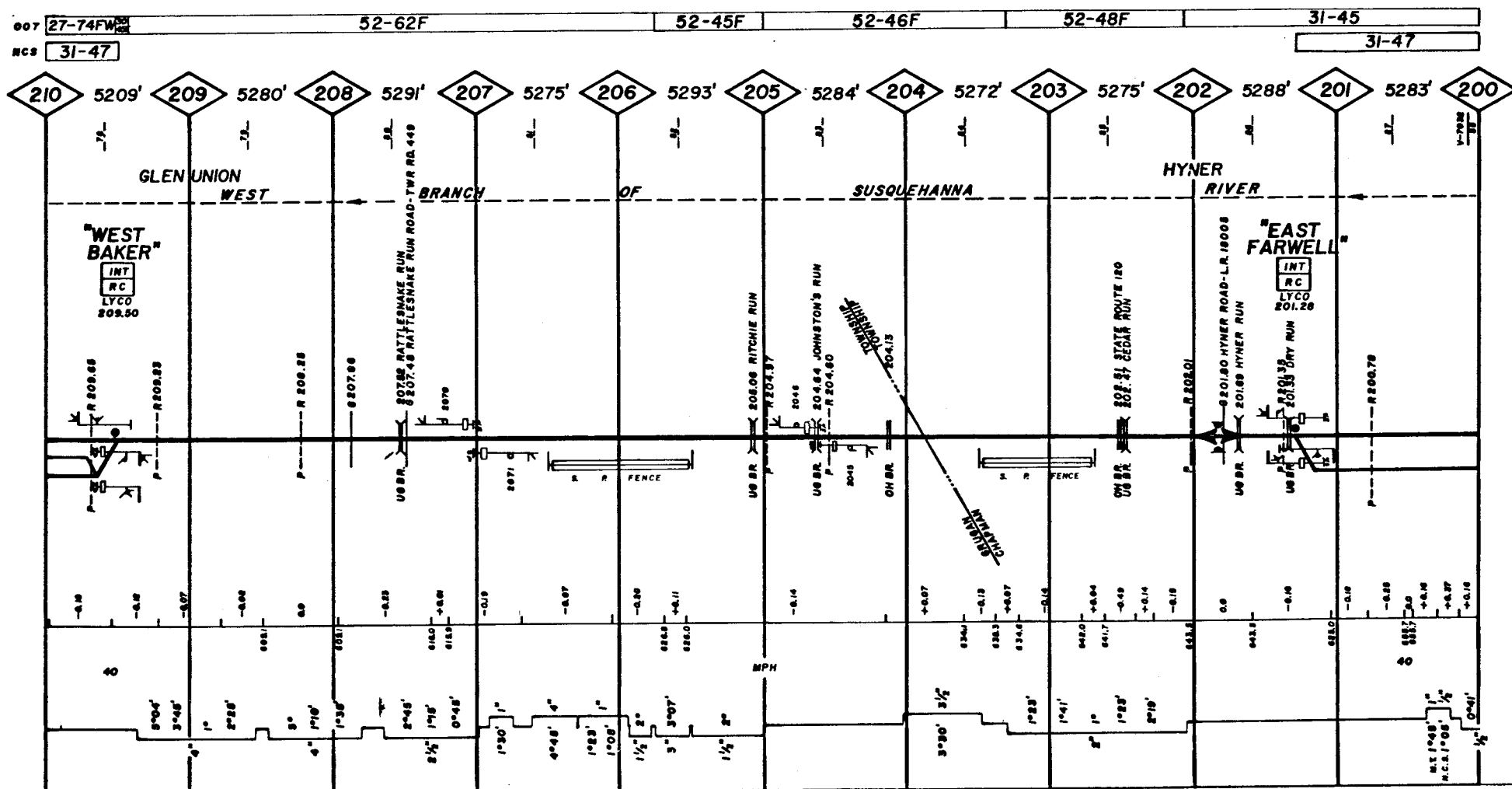
N-S

GRINDING		
WELDING		
SURFACING	66J	72E
TIES		53
BAR		
RAIL		31-47C
RAIL CLEAN		58B
JOINT STR.		

NCS

GRINDING	
WELDING	
SURFACING	65J
TIES	66
BAR	
RAIL	
RAIL CLEAN	52B
JOINT STR.	

NCS



SUB-DIVISION #4 SUPERVISOR  
LOCK HAVEN, PA.

2-3-14 CENTRAL REG. MAIN LINE BFL0.-HBG. MP 200.0-MP 210.0























































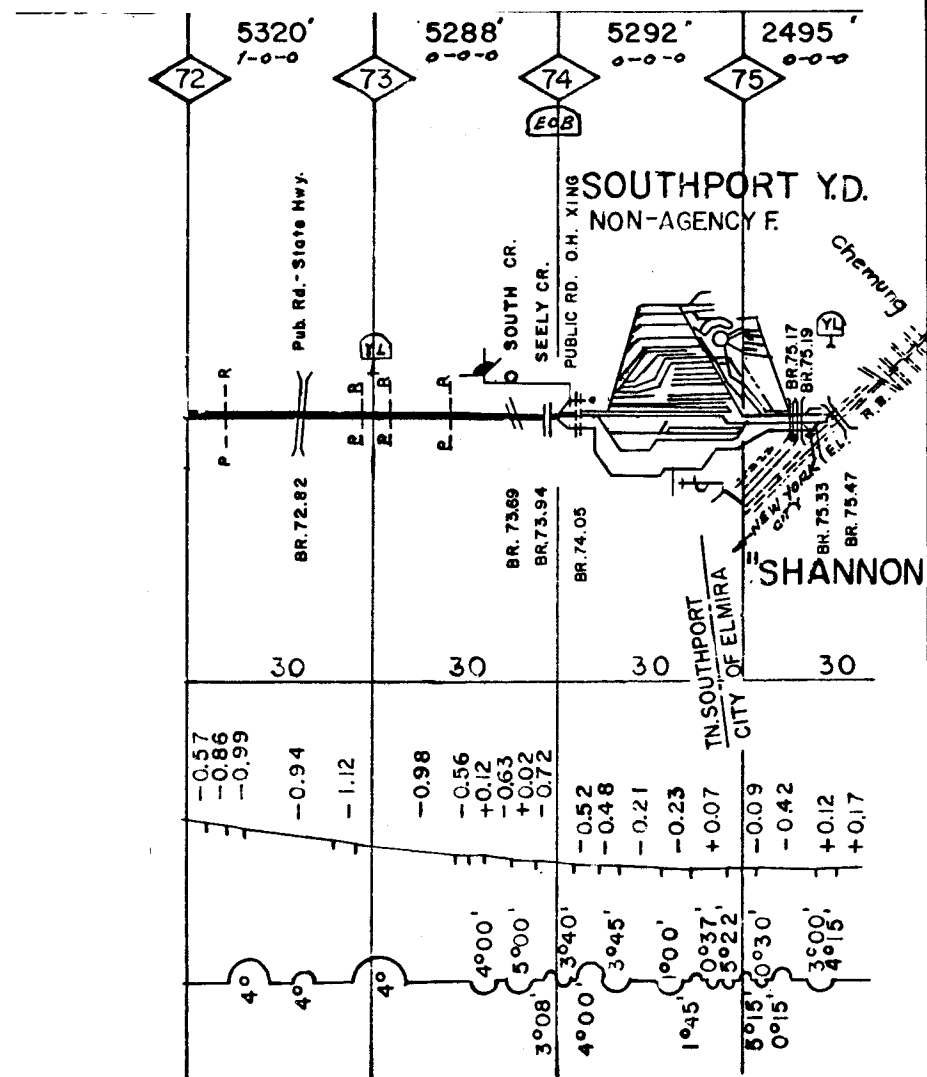






GRINDING	
WELDING	
SURFACING	66J
TIES	60
BARS	
RAIL	31-60C 30-59 30-57 30-57 30-44C
RAIL - CLEAN	
JOINT STR.	

007



2-3-17 CENTRAL REG. ELMIRA SEC. M.P. 72.0 - M.P. 75.5











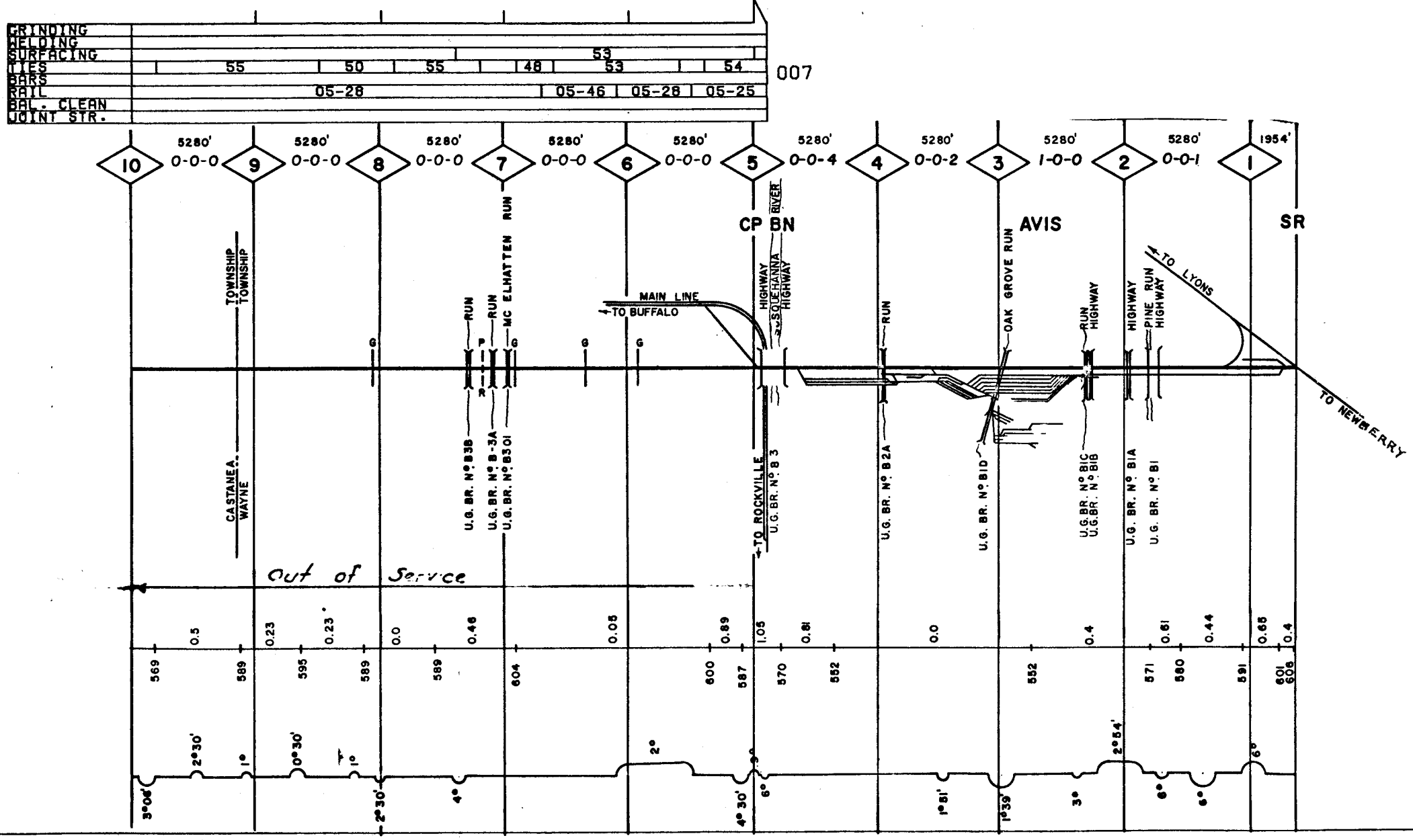








64



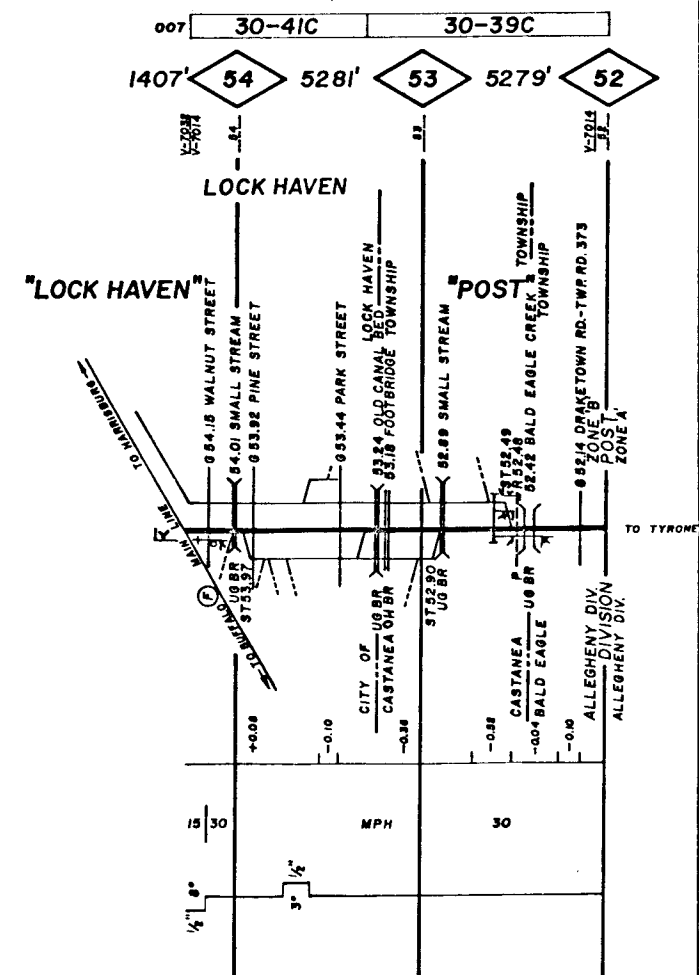
2-3-20 CENTRAL REG. MILL HALL IND. TRK. MP 4.9-MP 10.0



66

GRINDING		
WELDING		66
SURFACING		72P
TIRES		72
BAR		
RAIL	30-41C	30-39C
RAIL - CLEAN		64B
JOINT STR.		

007



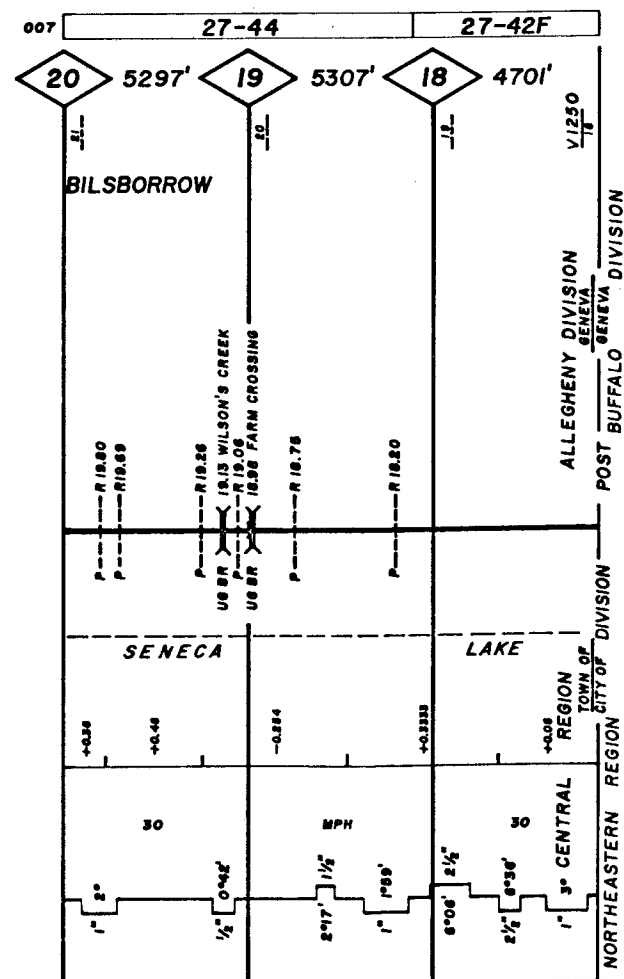
SUB-DIVISION #4 SUPERVISOR  
LOCK HAVEN, PA.

2-3-21 CENTRAL REG. BALD EAGLE BR M.P. 52.0 - M.P. 54.3

67

GRINDING		
WELDING	62G	
SURFACING	73F	
FILES	73	
BARS		56
RAIL	27-44	27-42F
RAIL - CLEAN	675	
JOINT STR.	67	

007



SUB-DIVISION #2 SUPERVISOR  
CORNING, N.Y.

MR 17J

MP 17.1- MP 20.0

2-3-22 CENTRAL REG. CORNING SEC

































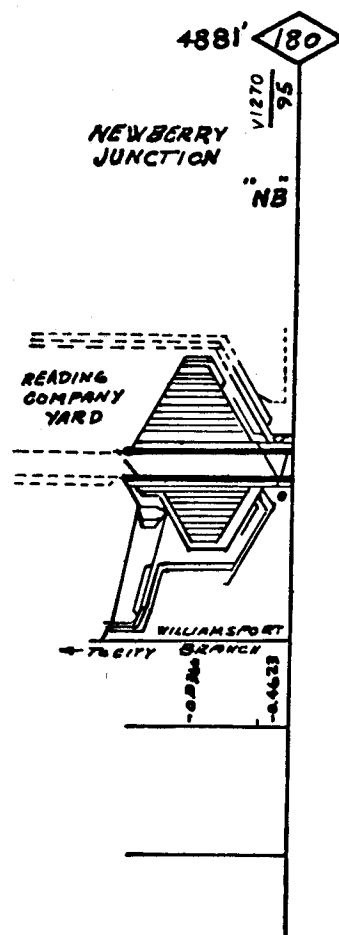
84

GRINDING	
WELDING	
SURFACING	
TIES	1721
BARS	
RAIL	0524F
RAIL - CLEAN	
JOINT SIR.	

001

GRINDING	
WELDING	
SURFACING	
TIES	
BARS	
RAIL	0028F
RAIL - CLEAN	
JOINT SIR.	

002



MP 180.0 MP 180.9

2-3-22 CENTRAL REG. CORNING SEC

















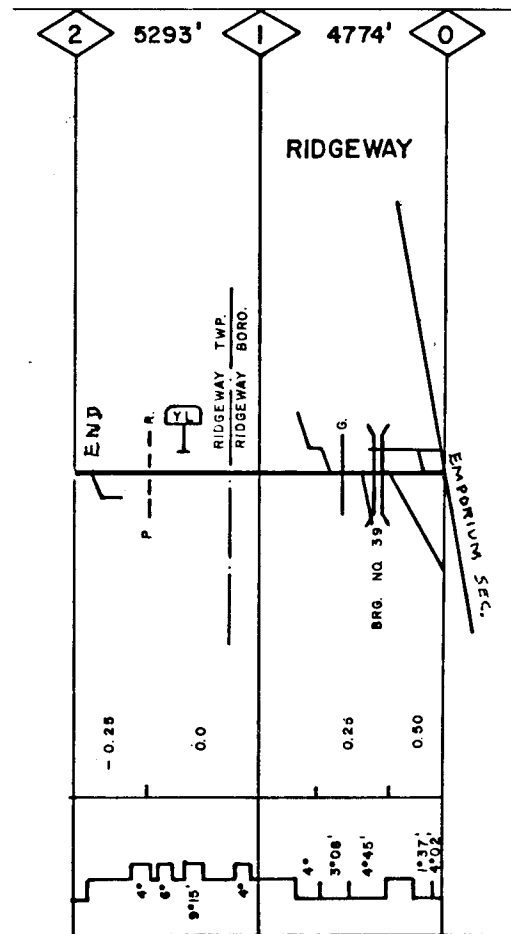






GRINDING	
WELDING	
SURFACING	
TIES	
BARS	
RAIL	85-00 85-95
RAIL - CLEAN	
JOINT STR.	

007



2-3-25 CENTRAL REG. RIDGEWAY IND TRK MP 0.0 - MP 2.0





































































































































































