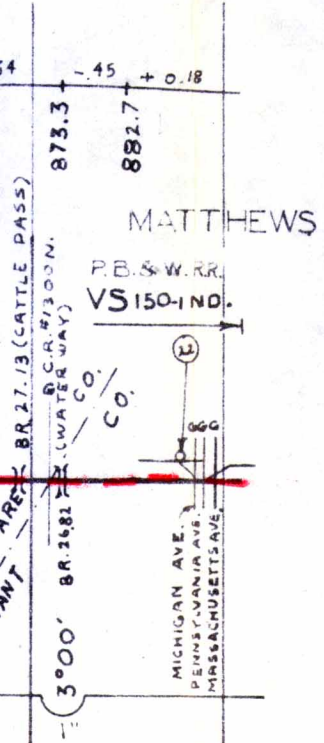


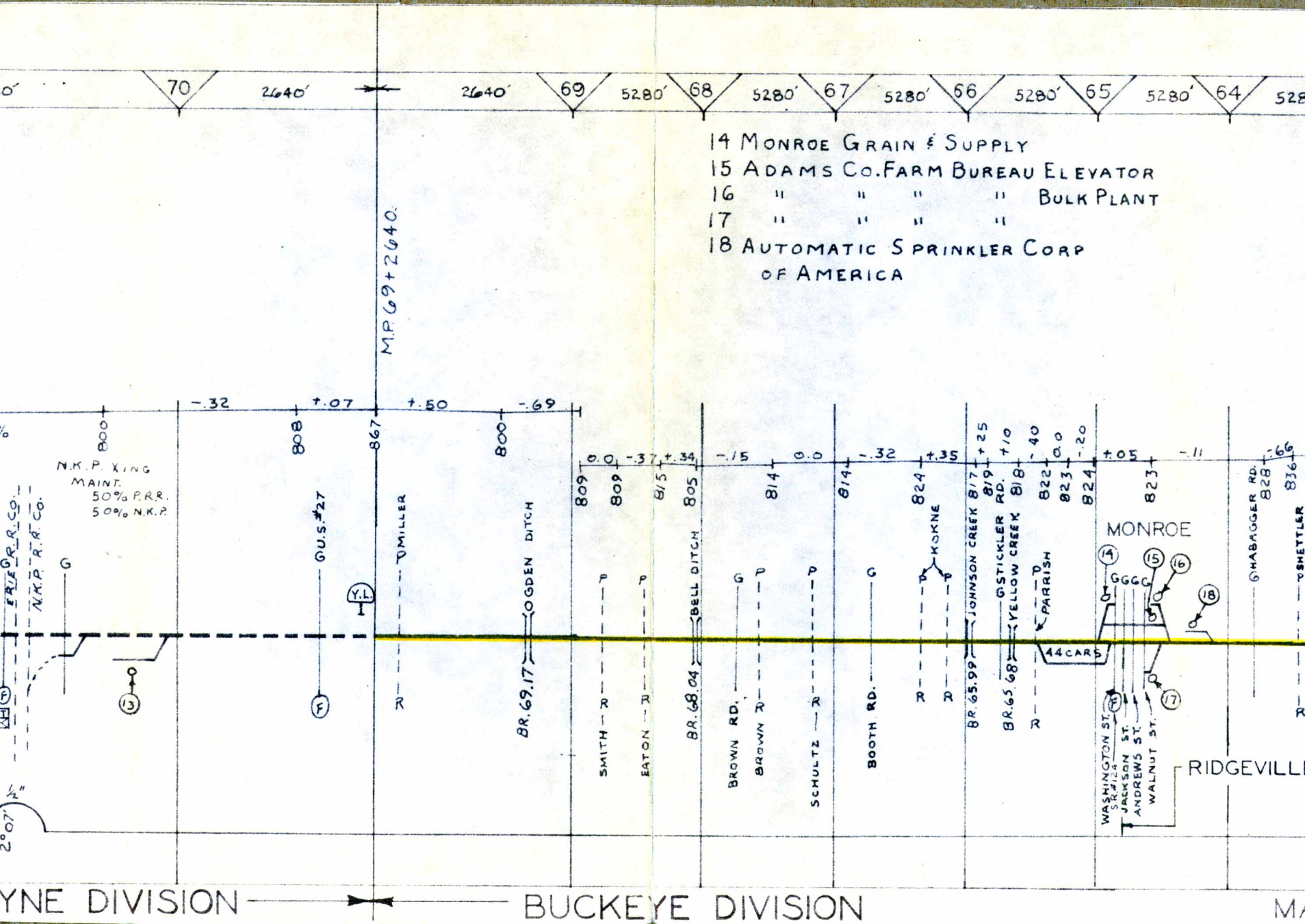
27 5281' 26



MUNCIE BRANCH

(MATTHEWS TO MUNCIE)

FT. WAYNE DIVISION-

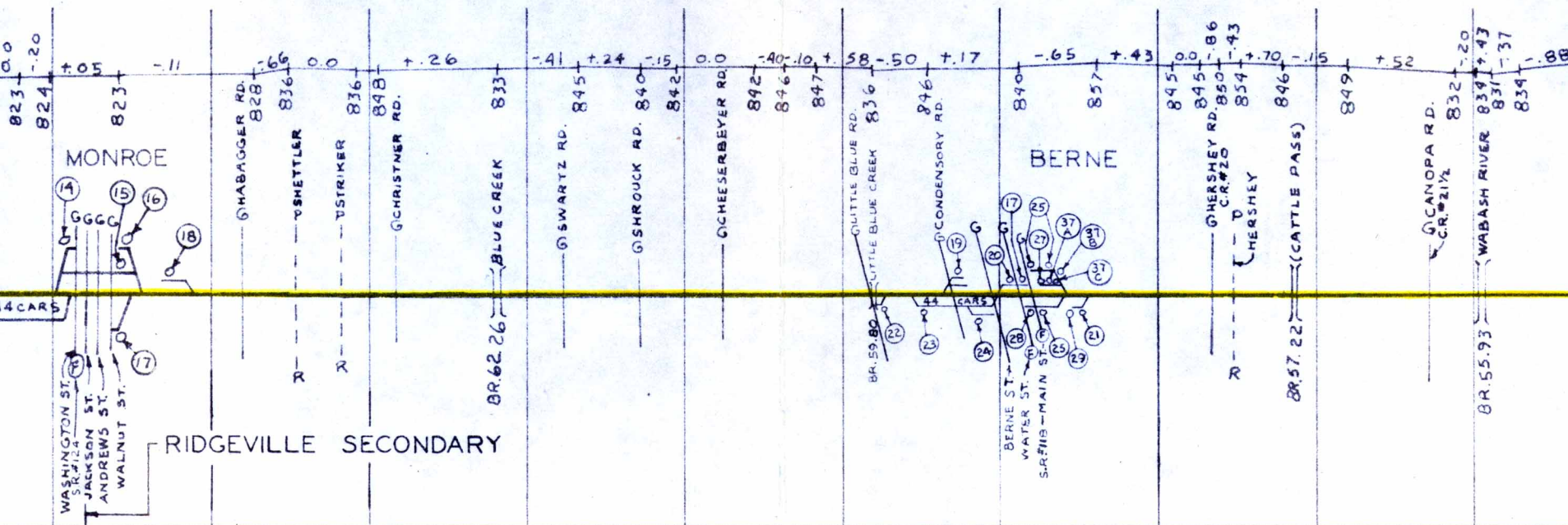


65 5280' 64 5280' 63 5280' 62 5280' 61 5280' 60 5280' 59 5280' 58 5312' 57 5248' 56 5280'

ELEVATOR
ULK PLANT

RP

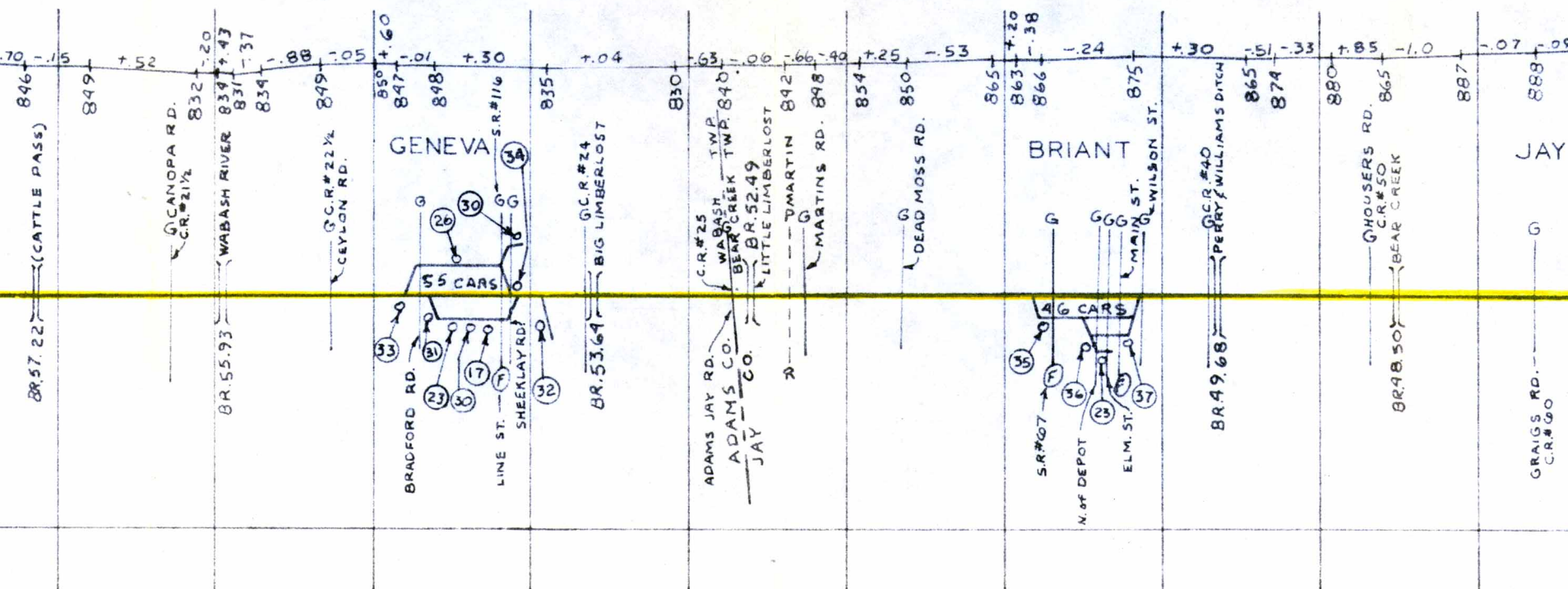
- 19 HAWTHORNE MELLODY DAIRY FARMS CO. 29 ECONOMY PRINTING
20 BERNE LUMBER CO. 30 GENEVA MILLING CO.
21 DUNBAR FURNITURE & MFG. CO. 31 GENEVA LUMBER & SUP
22 MCINTOSH INC. 32 NAAS FOODS INC.
23 STANDARD OIL CO. 33 NU DOOR MFG. CORP.
24 BERNE FURNITURE CO. 34 INDIANA OIL & SUPPLY CO.
25 BERNE EQUITY EXCHANGE CO. 35 GREEN BELT CHEMICAL
26 STUCKY GAS & APPLIANCE CO. 36 MATHIESON CHEMICAL
27 MESHDERGER BROS. STONE CORP. 37 BRYANT ELEVATOR CO.
28 NUSSBAUM NOVELTY CO. 37A. KERR-McGEE CHEMICAL



57 5248' 56 5280' 55 5280' 54 5280' 53 5280' 52 5280' 51 5280' 50 5280' 49 5280' 48 5280'

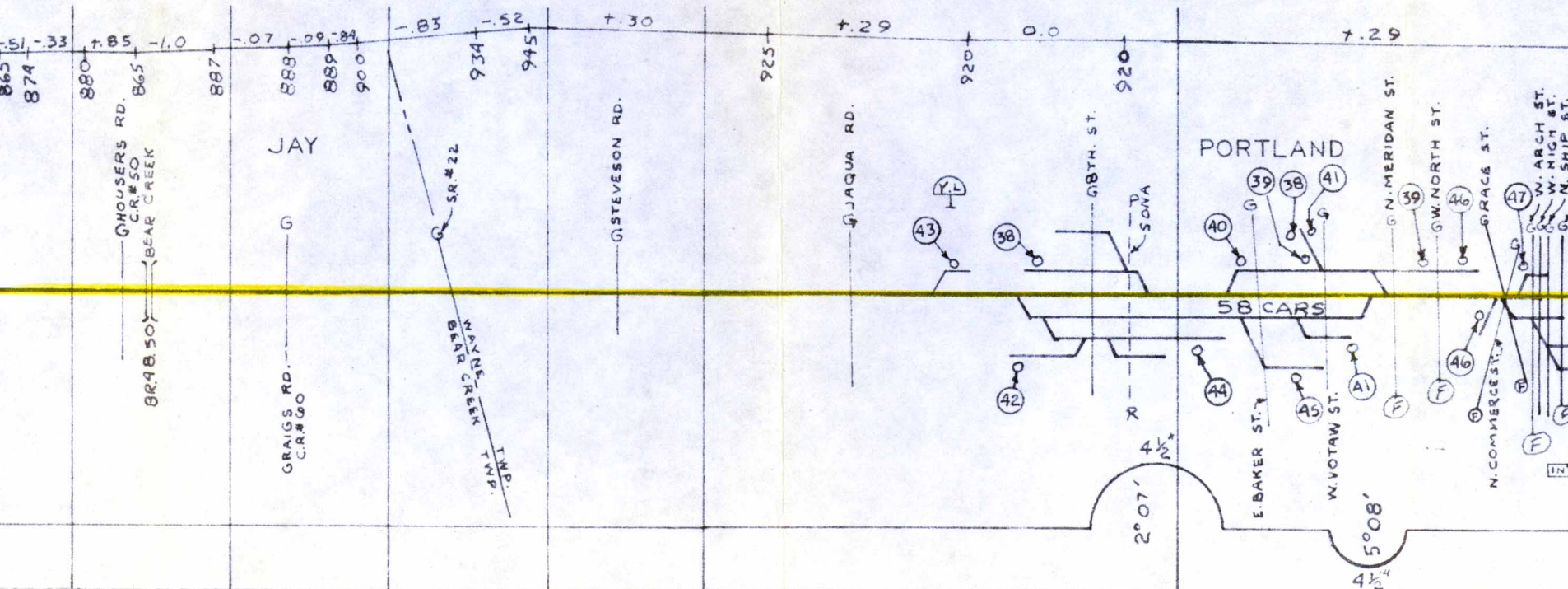
- 9 ECONOMY PRINTING Co.
- 0 GENEVA MILLING Co.
- 1 GENEVA LUMBER & SUPPLY Co.
- 2 NAAS FOODS INC.
- 3 NU DOOR MFG. CORP.
- 4 INDIANA OIL & SUPPLY Co.
- 5 GREEN BELT CHEMICAL Co. OF INDIANA
- 6 MATHIESON CHEMICAL CORP.
- 7 BRYANT ELEVATOR Co.
- 7A. KERR-McGEE CHEMICAL CORP.

- 37B. BERNE HIWAY HATCHERY
- 37C. SMITH-DOUGLASS Co., INC.
- 37D.
- 37E.



5280' 49 5280' 48 5280' 47 5312' 46 5248' 45 5280' 44 5280'

38 HAYNES MILLING CO. 48 FR
 39 D. ABRAMSON INC. 49 SH
 40 JAY GARMENT CO. 50 CO
 41 JAY COUNTY FARM BUREAU
 42 GULF REFINING CO.
 43 HORIZON MOBILE HOMES, INC.
 44 PORTLAND FORGE INC.
 45 PORTLAND LUMBER & SUPPLY
 46 FRED MEDLER CO.
 47 O. T. FINCH & SON



ANDERSON, INDIANA

5280'

43

5340'

42

5220'

41

5280'

40

5280

39

5280'

38

48 FRED MILLER FEED CO.

49 SHELTER MFG. CO.

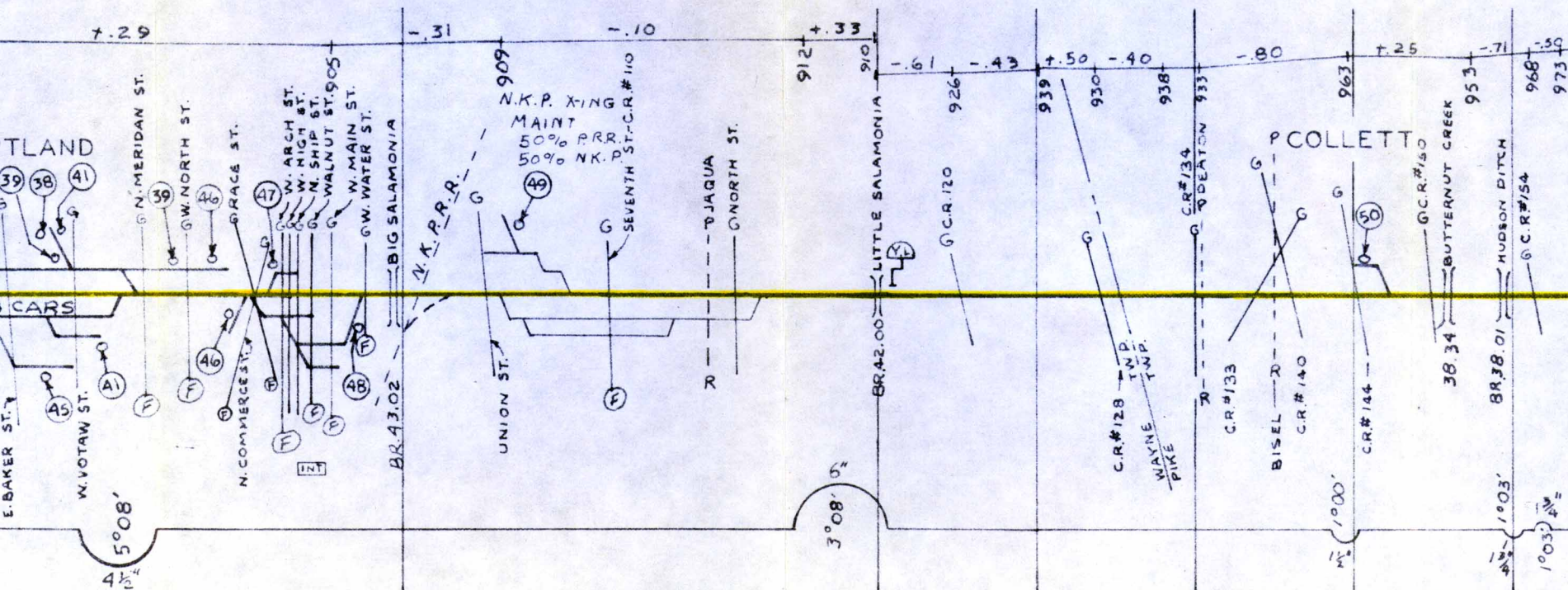
50 COLLETT GOODRICH CO.

BUREAU

OMES, INC.

INC.

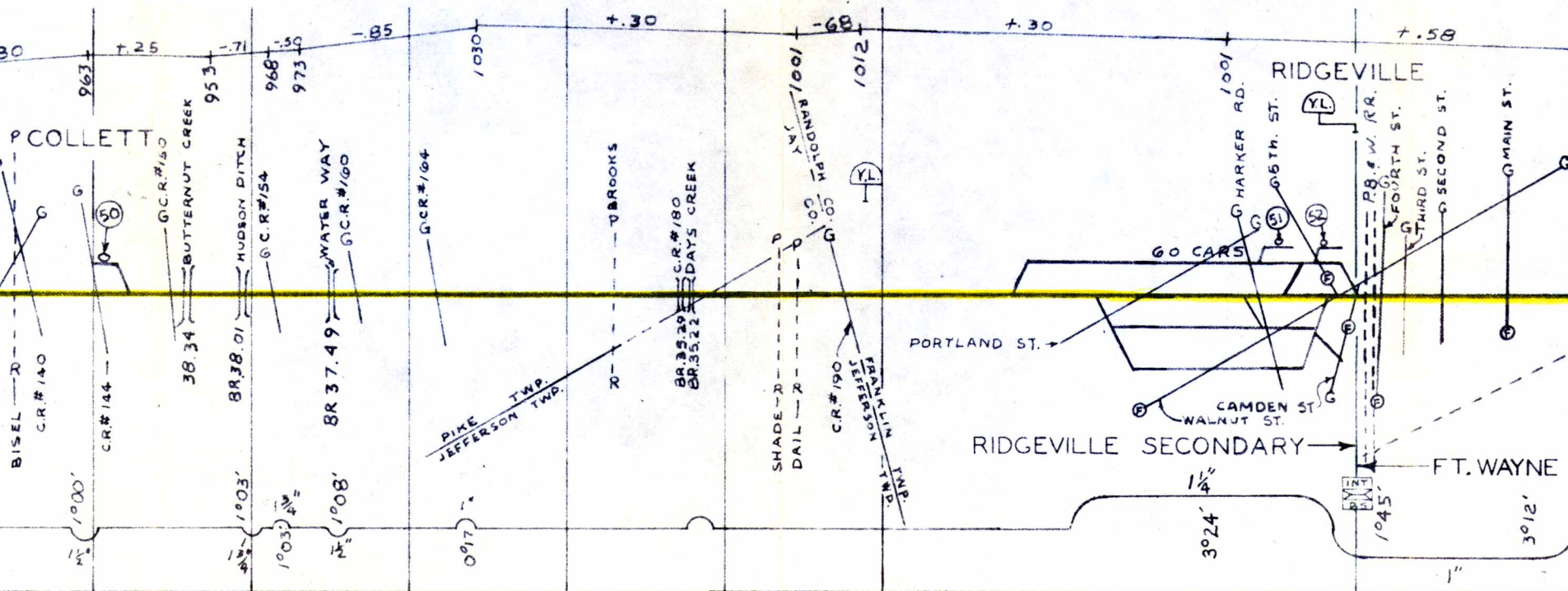
ER & SUPPLY



MAX. 35 M.P.H. PASS. & F

280 39 5280' 38 5280' 37 5280' 36 5280' 35 5280' 34 5310' 33

51 KRAFT FOODS CO.
52 RIDGEVILLE GRAIN CO.
53 RIDGEVILLE LUMBER CO.
54 ELORY NORRIS CO.



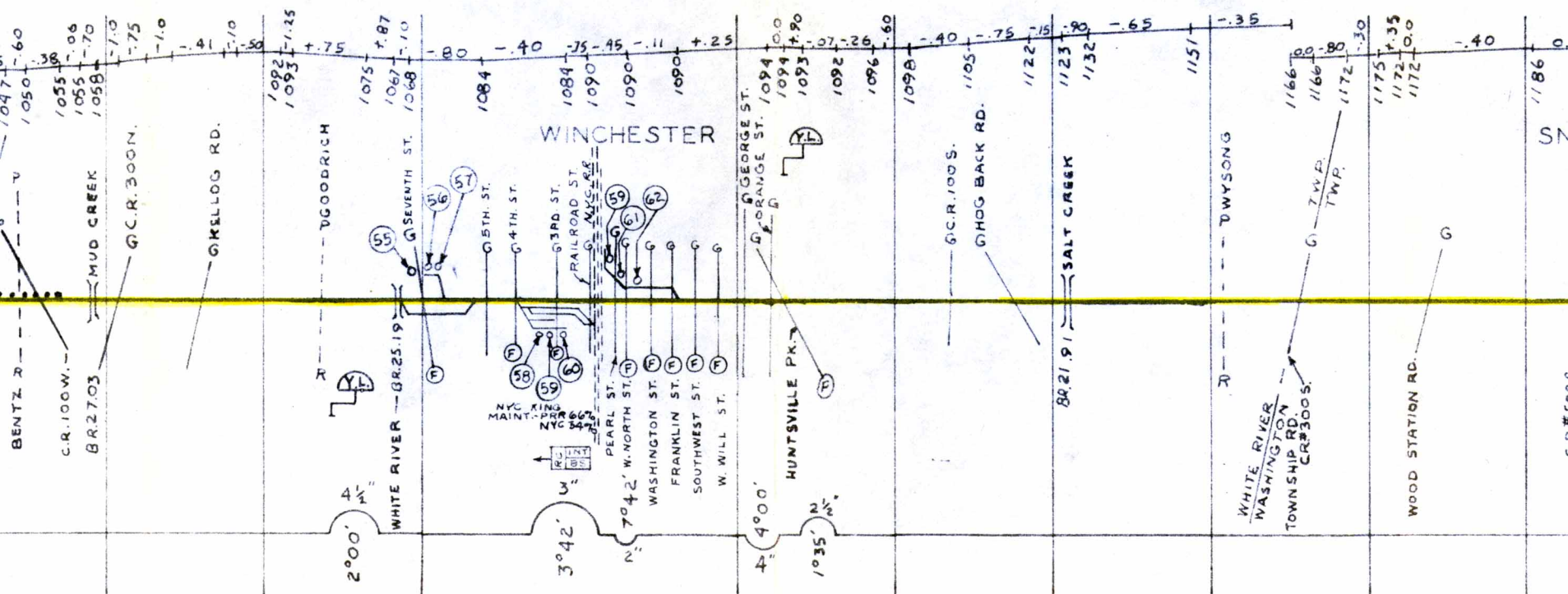
M.P.H. PASS. & FRT.

SUBDIVISION No. 11

5280' 27 5280' 26 5260' 25 5290' 24 5290' 23 5280' 22 5280' 21 5280' 20 5280' 19

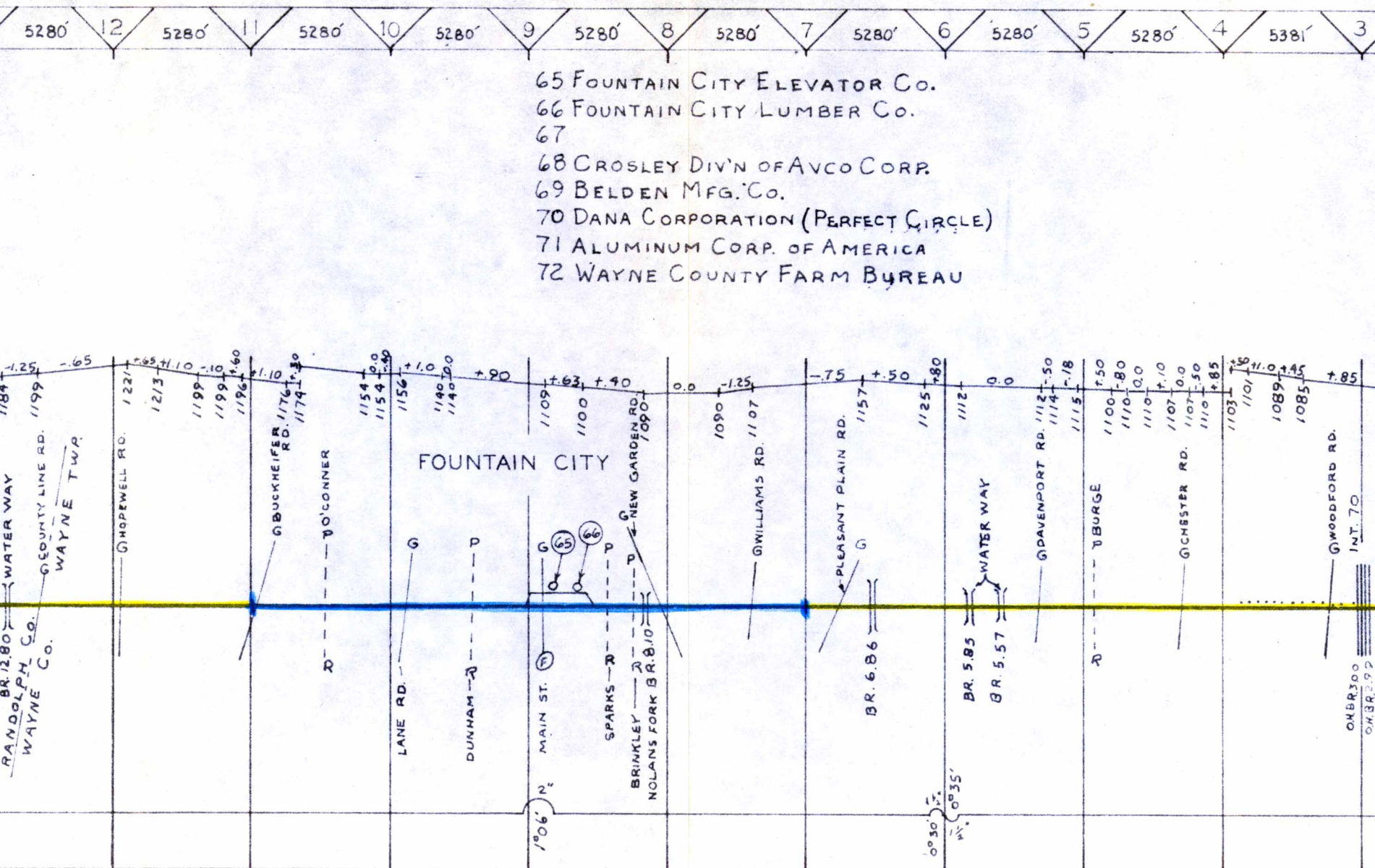
- 55 HENSHAW BUILDING SUPPLIES
- 56 STANDARD OIL Co.
- 57 OVERMEYER MOULS Co.
- 58 UNITED GRAIN & FEED
- 59 GOODRICH BROS. Co.
- 60 CITIES SERVICE OIL Co.
- 61 COOK AND SHANNON
- 62 ALLEN A. WILKINSON LUMBER Co.

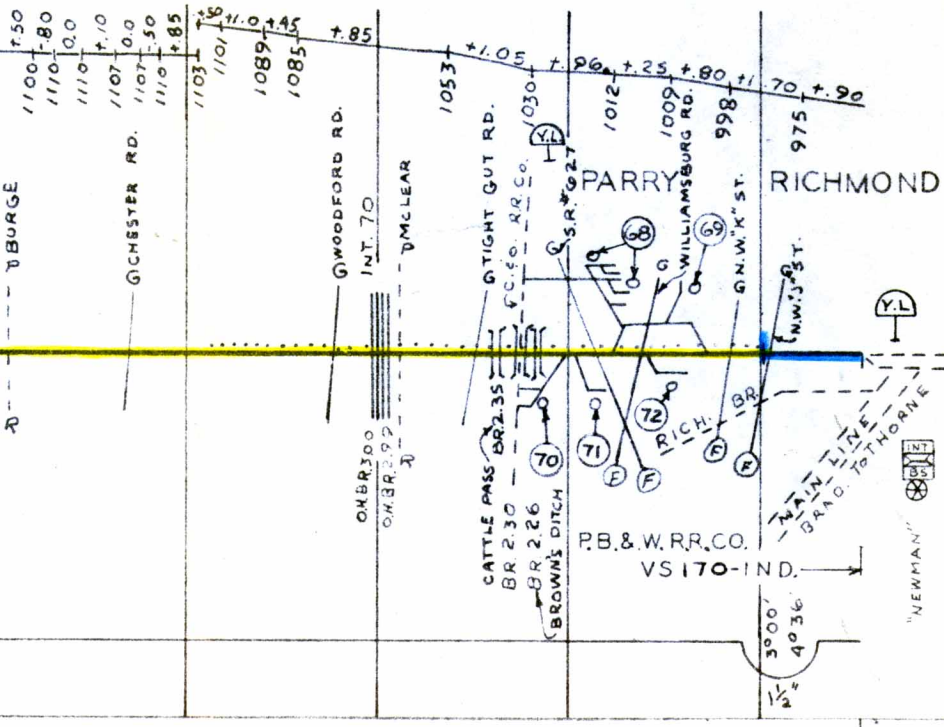
63 SNOW
64 LYNN



63 SNOW HILL GRAIN CO.
64 LYNN LUMBER CO.







FT. WAYNE BRANCH

RICHMOND TO M.P. 69+2640

FT. WAYNE BR.