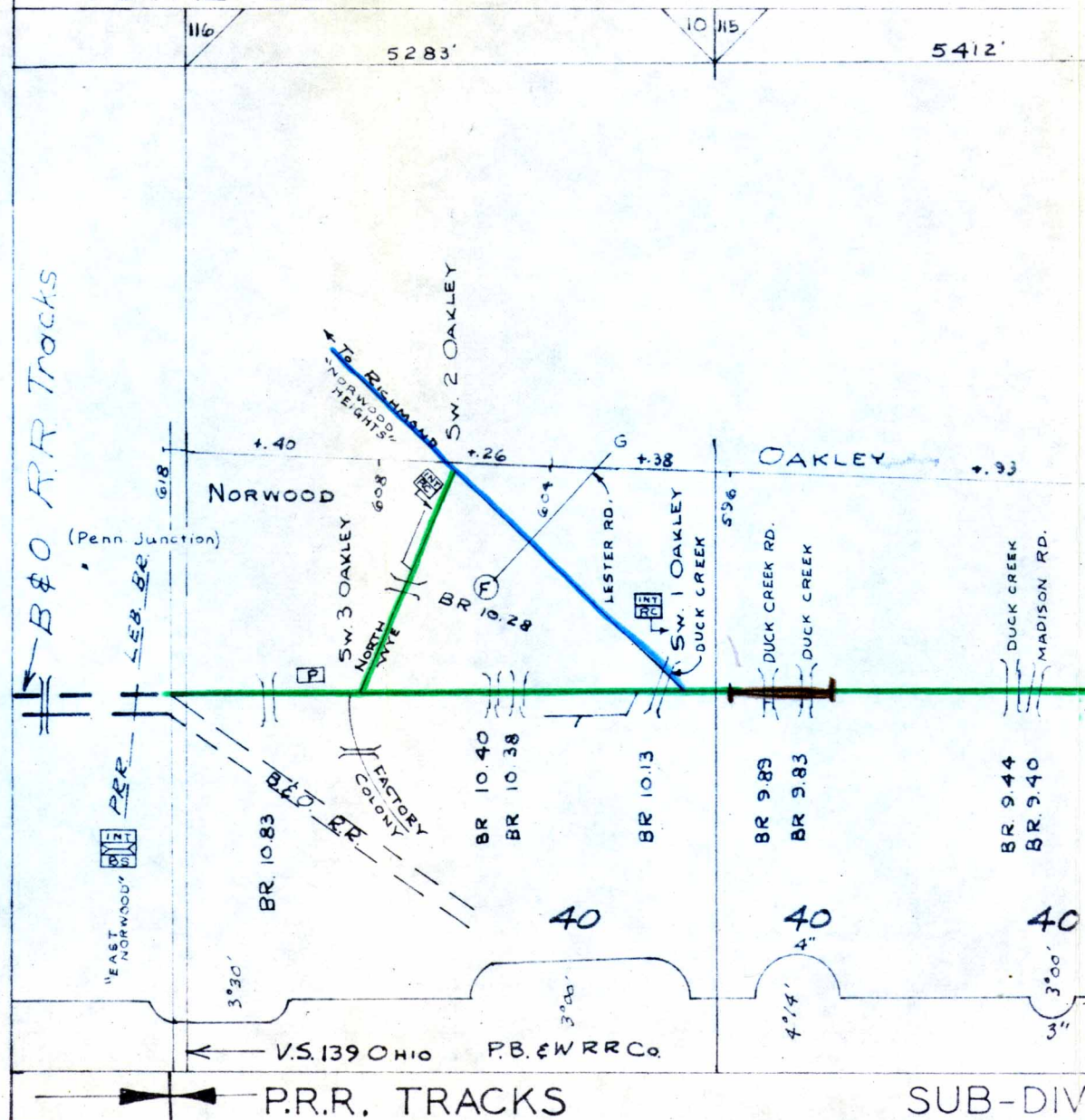
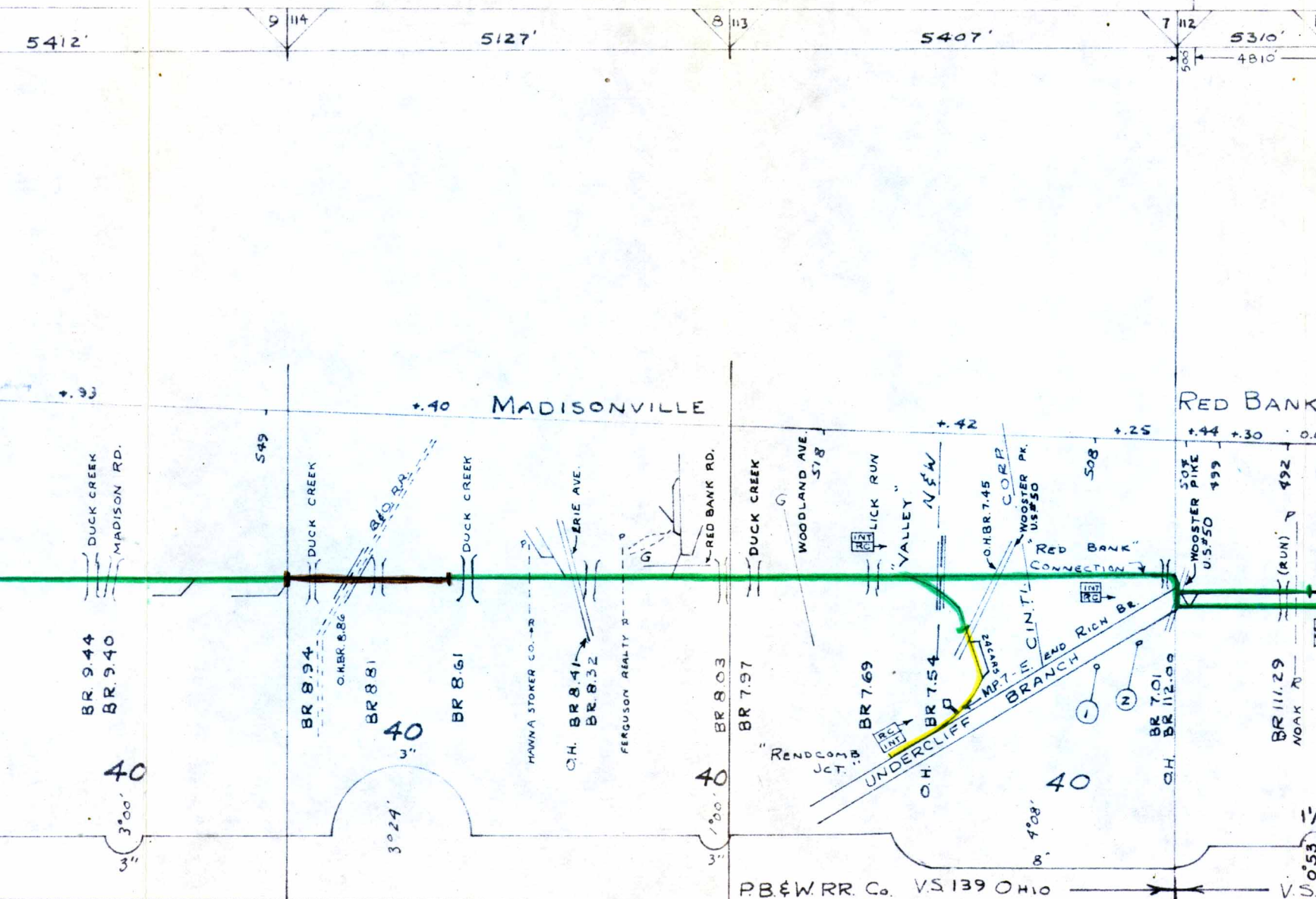


NO. SWITCHES



SUB-DIVISION NO.10



SUB-DIVISION

Nº. 10

Supervisor - T.W. SMALLWOOD



4. TERRACE PARK
5. CLEMONT LUMBER
6. CLARK COAL CO.
- 7.
8. OHIO GRAVEL CO.
9. THE BREWER
10. OHIO GRAVEL CO.
11. L.W. NISBETT LUMBER

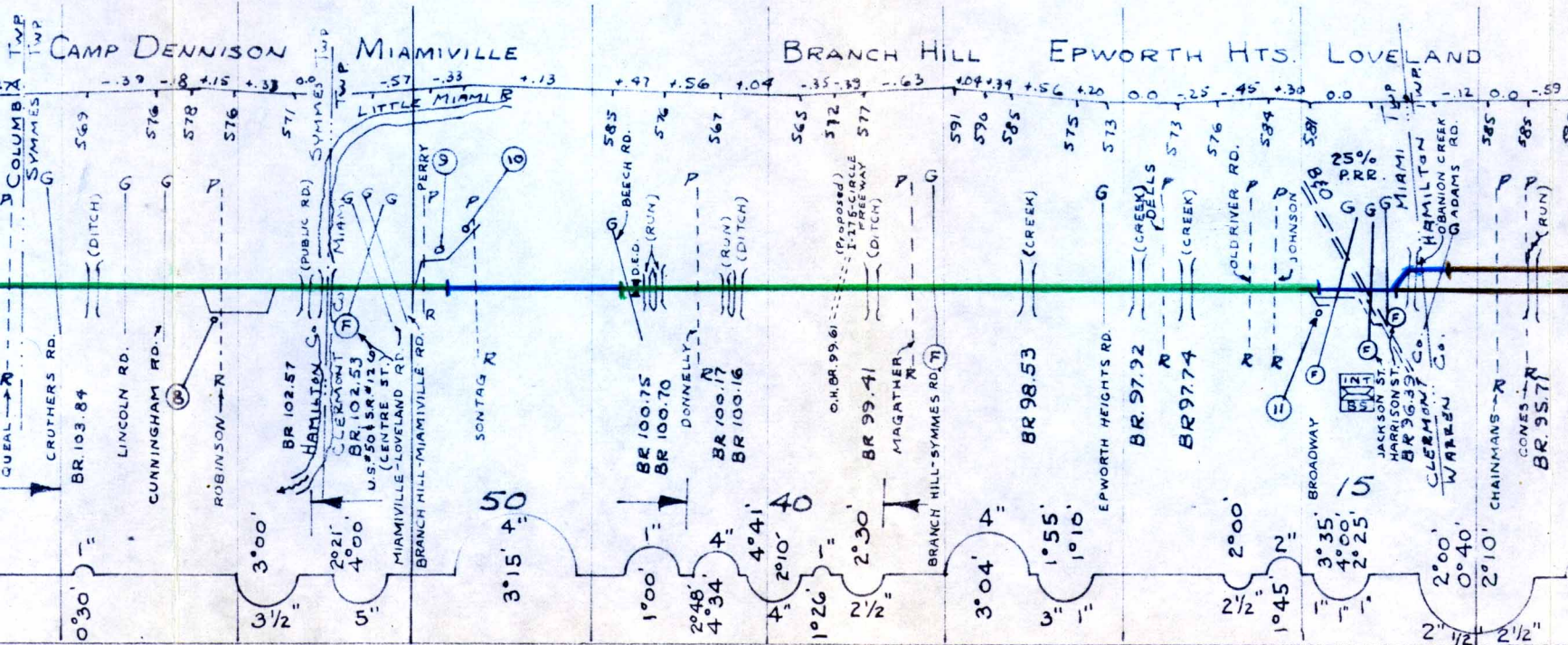




104 5320' 103 5260' 102 5246' 101 5549' 100 5010' 99 5353' 98 5276' 97 5261' 96 517

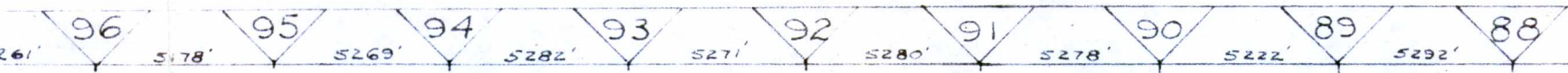
RACE PARK LUMBER CO.  
MONT LUMBER CO.  
RK COAL CO.

GRAVEL CO.  
BREWER CO.  
GRAVEL CO.  
NISBETT LUMBER CO.

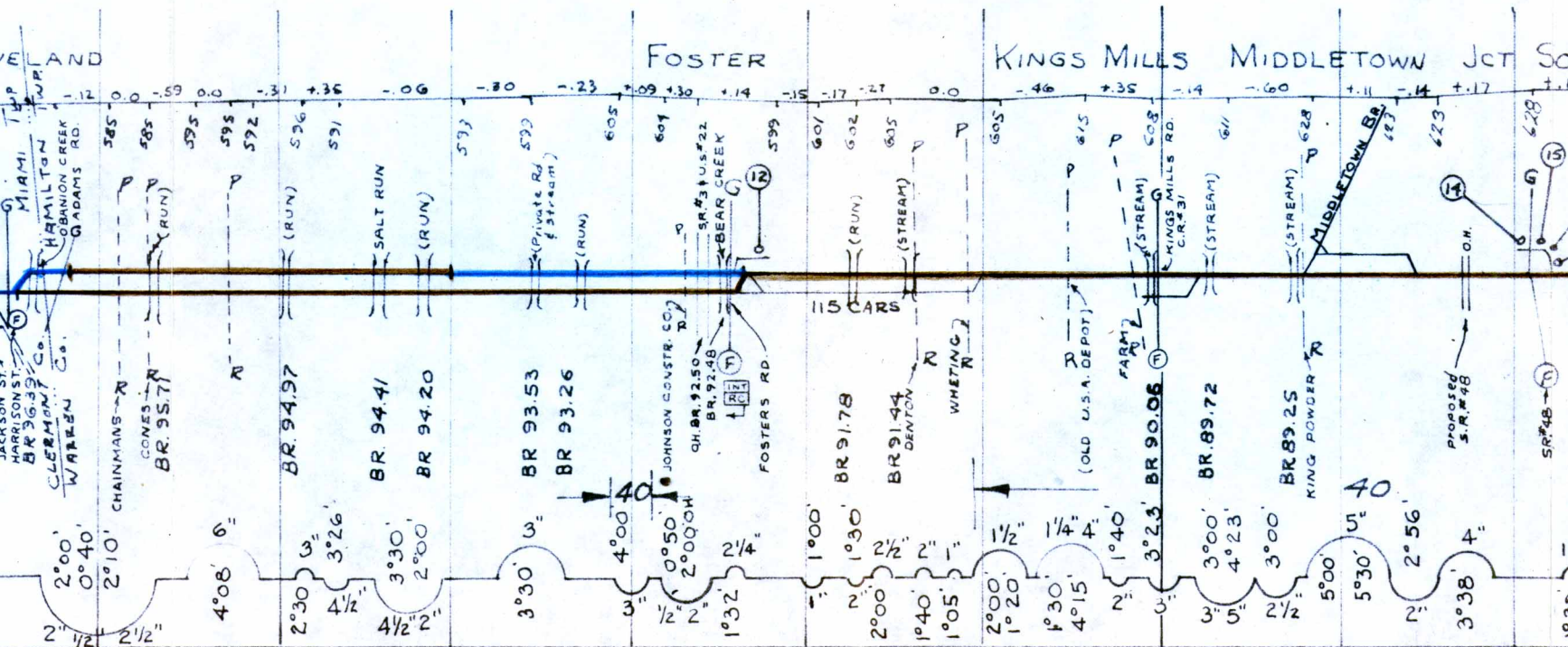


SUPERVISOR H.M. SHOAF

MORRO



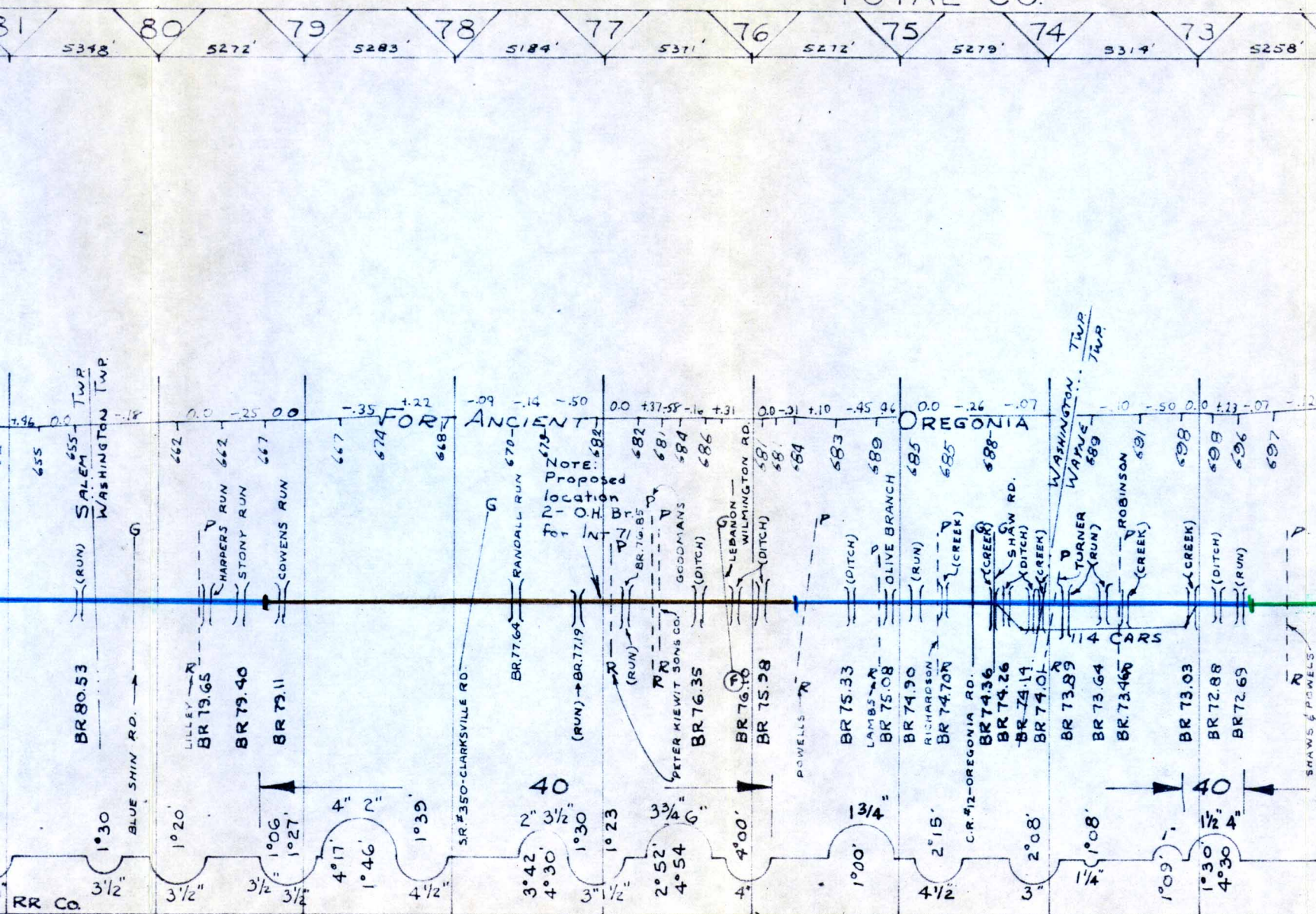
12. KELLY LUMBER Co.
- 13.
14. A. N. RAPP COAL Co.
15. C. S. FRED.
16. BROWNING BROS.
17. KASH D. AMBURGY LUMBER Co.
18. OHIO GRAVEL COMPANY







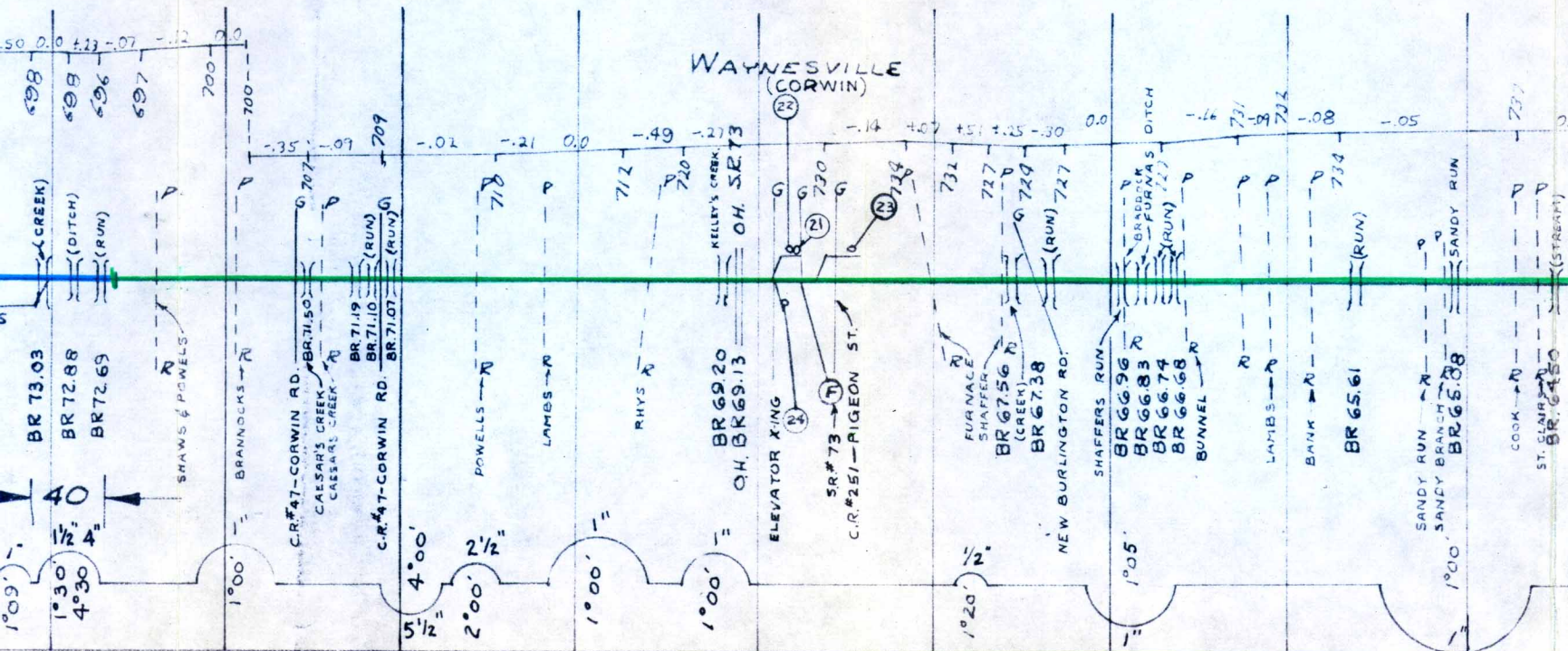
# MAIN TRACK TOTAL CO.





21. W.R.GRACE & Co. (DAVISON CHEMICAL DIV.)
22. WAYNESVILLE LUMBER CO.
23. DOSTER FARM SUPPLIES
24. WAYNESVILLE FARMERS Exch'g
- 25.

26. CLINTON CO. F  
27. SOUTHWESTERN  
28. S. B. CRAIG C  
29. NEWPORT'S S

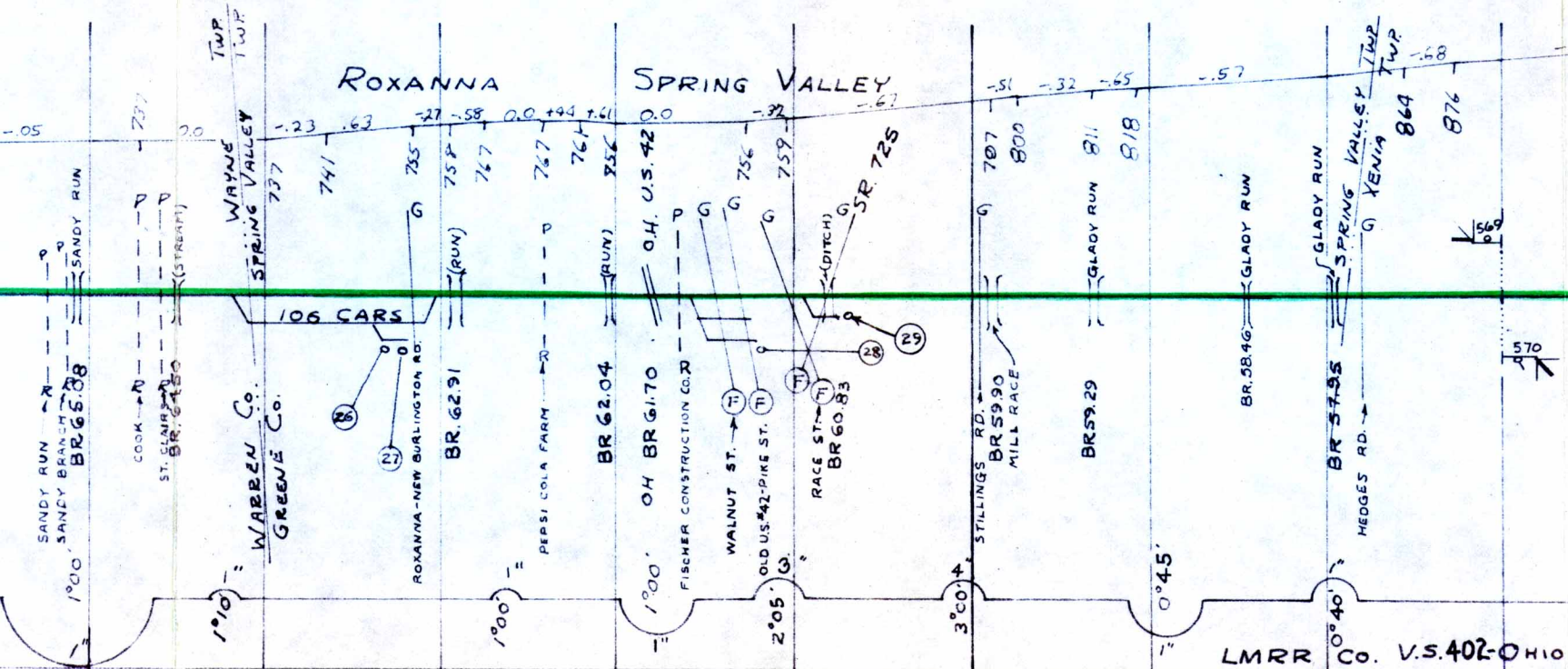




72' 65' 64' 63' 62' 61' 60' 59' 58' 57'

S277' S278' S246' S283' S283' S278' S279' S283'

WINTON CO. FARM BUREAU  
 SOUTHWESTERN FARM CHEMICAL  
 B. CRAIG CO.  
 NEWPORT'S SUPPLY CO., INC.



MAX. 50 M.P.H. PASS. 50 M.P.H. FRT.

MAIN LINE  
XENIA TO  
CINCINNATI

