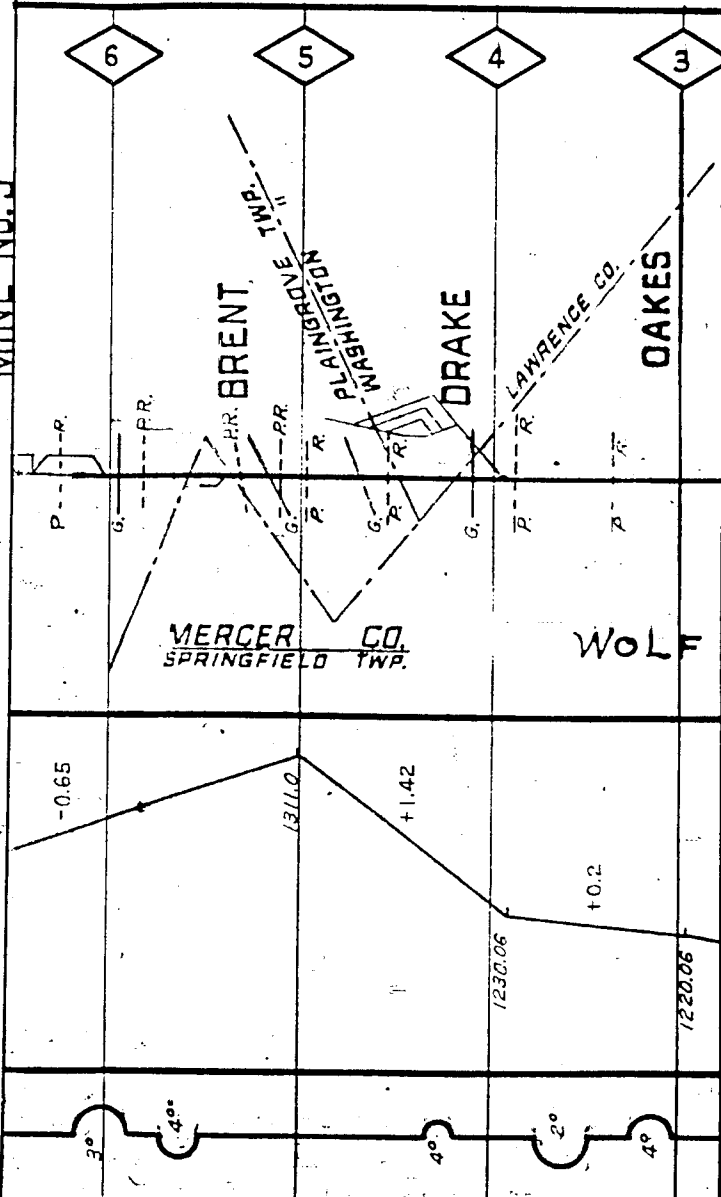


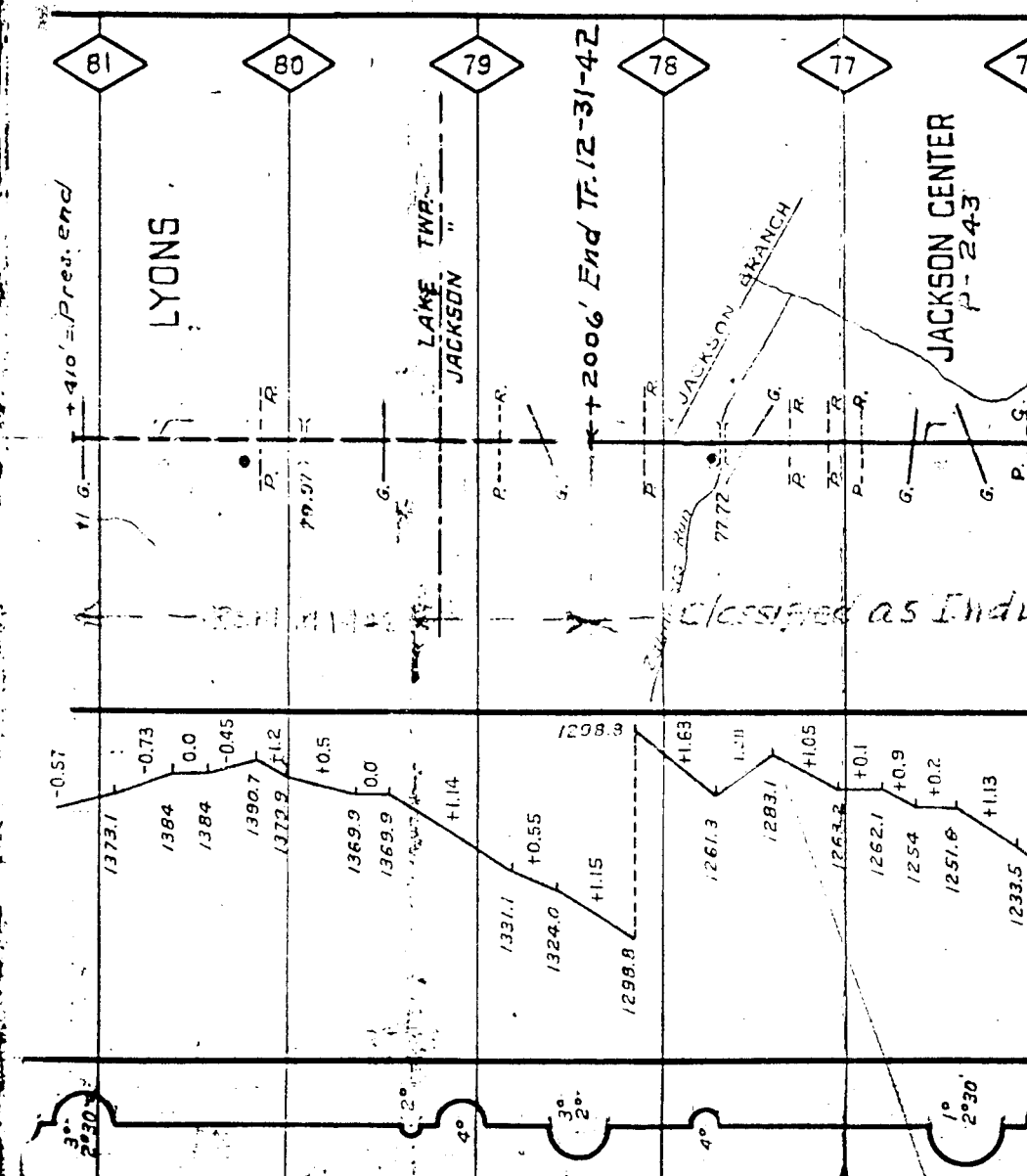
65

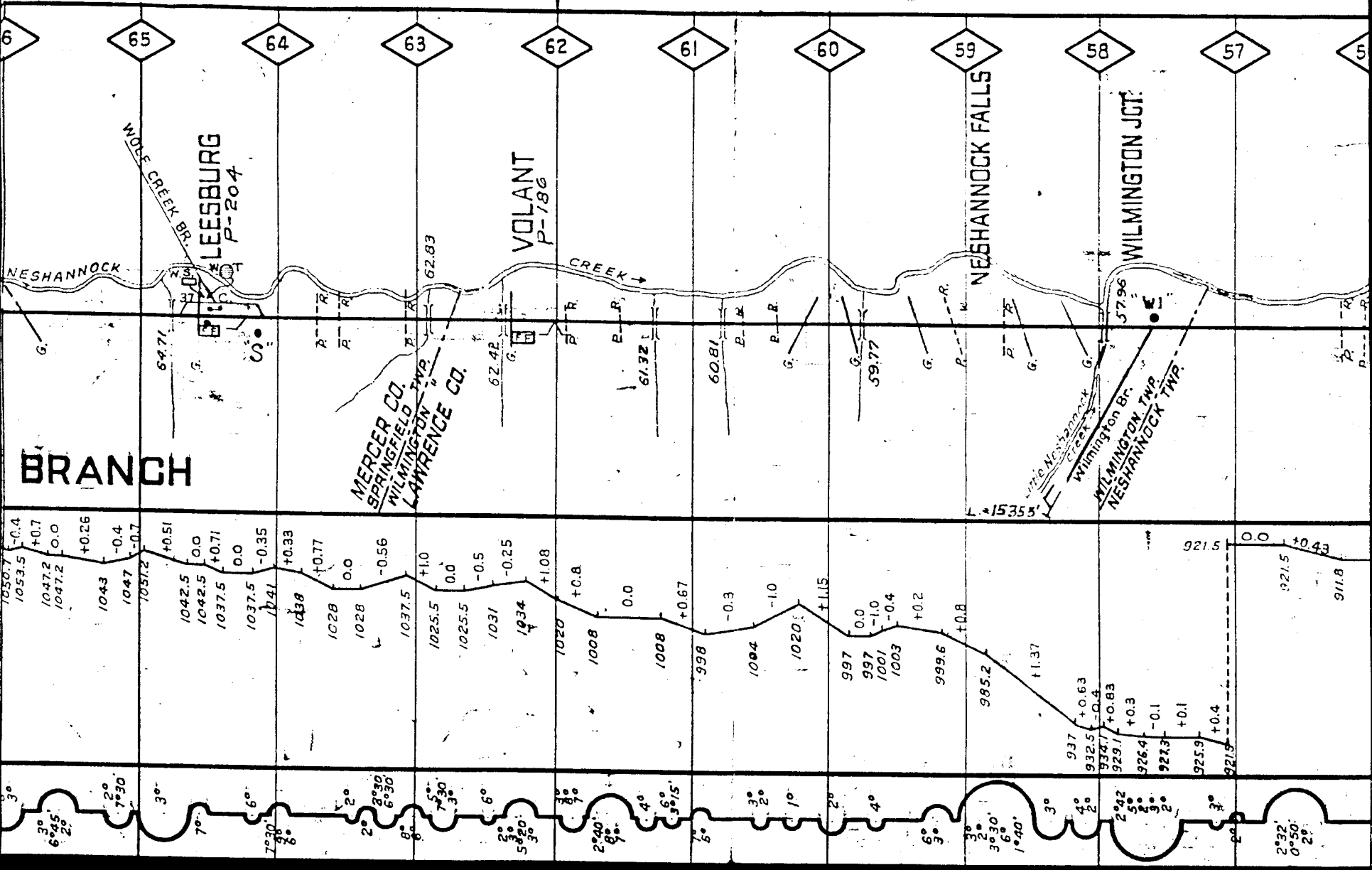
M.T. 12 70
T.CO. 22
SW

MINE No. 5



E. & A. DIV. NO. 9624



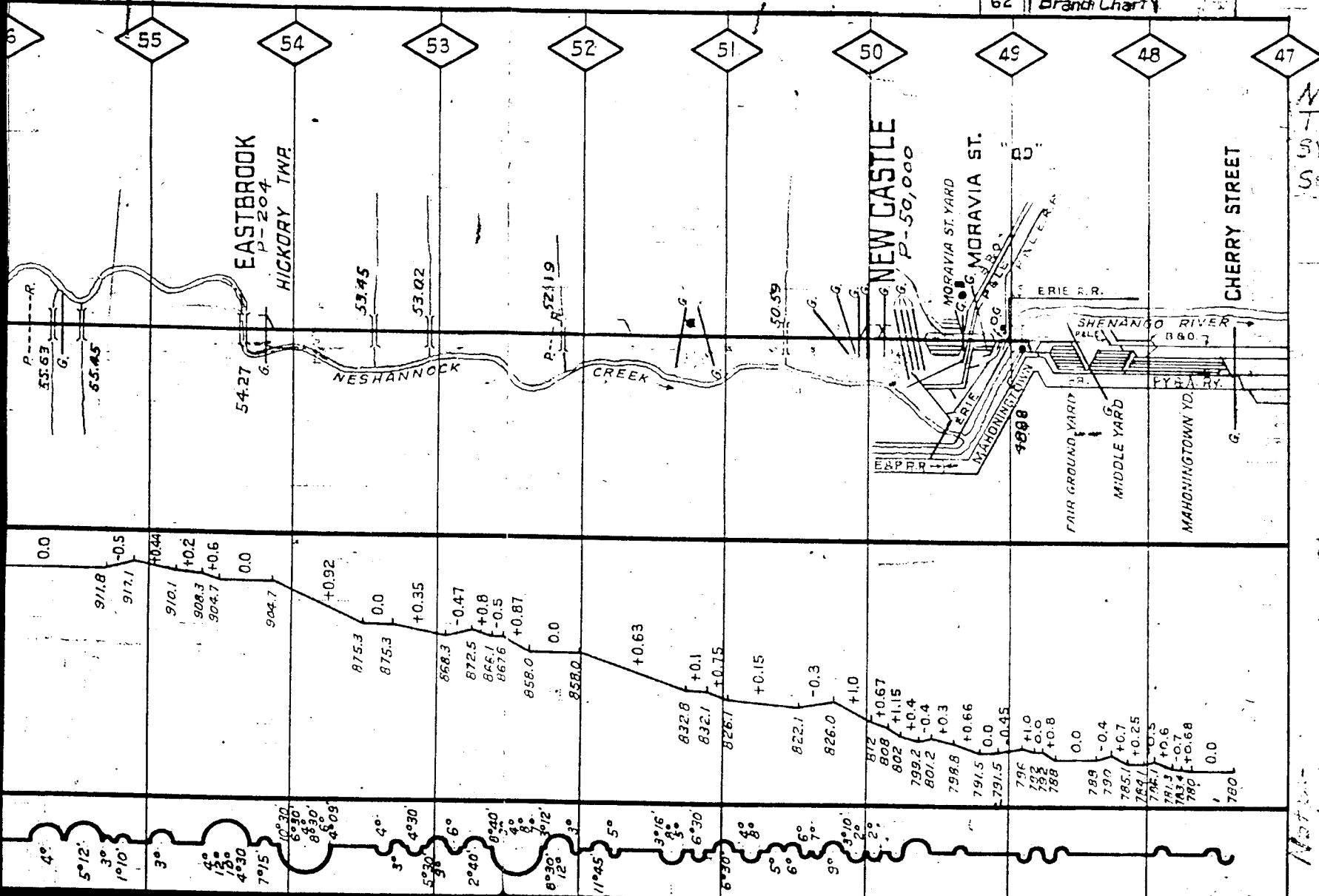


M.T. 13.15 MI.
T.C. 24.15 MI.
SW. 65

52

6
Note: See
Mahoningtown
Branch Chart

See P. 8A
chart



M.T. 037
T.C. 182
SW. 65
See Note

Notes:
All tracks West of Shenandoah River
correctly 7 feet of Section
of B.E. 2.00 Consolidation and 27 Switches
are added to Sec. No. 6 on E.P. 2.00 55

- LEGEND -

PASS, STA. BRICK ☐ FRAME ☐ SHELTER ☐

FRT. " " ☐ " ☐ " ☐

INTERLOCKING TOWER ☐

BLOCK STATION ☐

TOOL HOUSE ☐

TELEPHONE BOOTH OR BOX ☐

ASH PIT ☐

PUBLIC ROAD XING. (GRADE) ☐

PRIVATE " " " ☐

OVERHEAD BRIDGE ☐

GIRDER " ☐

SLAB " ☐

ARCH " ☐

TRESTLE " ☐

SIGNAL " ☐

MAST ☐

WATER STATION ☐

" TANK ☐

" PLUG ☐

STATE, CO. & TWP. LINES ☐

152 LB. RAIL ☐ PURPLE ☐

131 " " ☐ GREEN ☐

130 " " ☐ WHITE ☐

125 " " ☐ BROWN ☐

100 " " ☐ YELLOW ☐

85 " " ☐ RED ☐

LESS THAN 85 LB. BLACK ☐

POPULATION ☐

CENTRAL REGION

E. & A.
DIVISION

NEW CASTLE BRANCH
MAHONINGTOWN
TO
STONEBORO
AND
WOLF CREEK BRANCH

SCALE 1 INCH = 1 MILE.
OFFICE OF CHIEF ENGR. M.W.
PITTSBURGH, PA.

CORRECT TO ☐