



93.466-VALLEY LINE

REVISED TO JAN 1, 1992

EAST LEG OF WYE

81.30 BEG. DBL. TRACK

B'S PIPE LINE

60 CR 4

82.094

81.37

81.5 LATHROP

15120

SHARPE GENERAL DEPOT

86.1 FRENCH CAMP

15110

TO OAKLAND

83 CR. ROCK

83 CR ROCK

TO FRESNO

USS

D. FRENCH CAMP SLOUGH
86.66 1808
86.85 23RT
86.97 1808 D. LITTLE JOHN'S CREEK

87.53 48'00

87.80 43'RT

88.17 CMF
(4172' CMF)

WAY UP

89.88 818 D. CHARTER

0.0574 W.

0.0742 E.

40

30

684

90

SH

132

90

12

40

20

-0.08 +0.05 -0.04

0.08

-0.09

+0.07 -0.07

0.12

-0.03

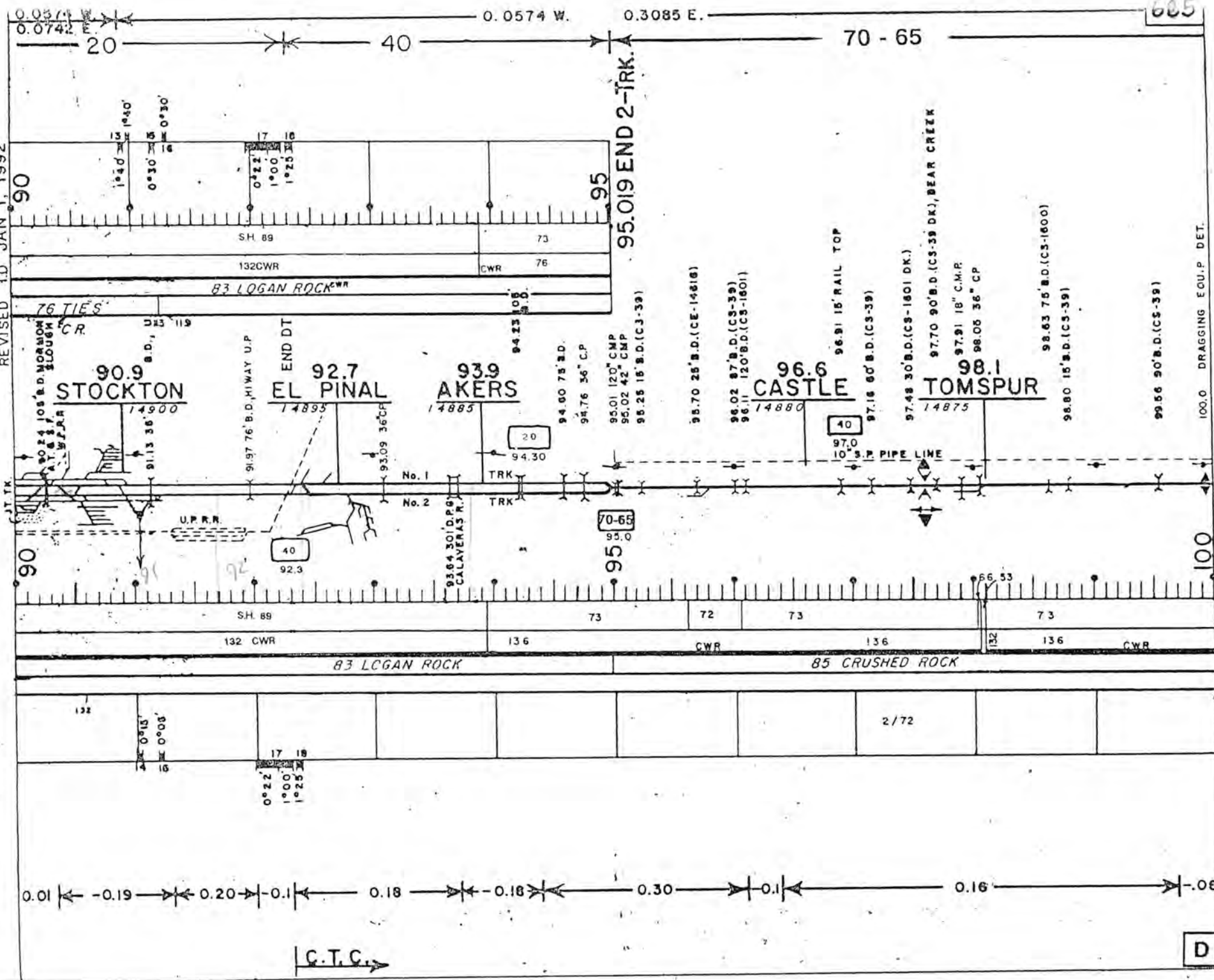
0.01

STOCKTON DISTRICT - J.MENDEZ

C.T.C.

D

REVISED TO JAN 1, 1992



100.0 DRAGGING EQUIP. DET.

100

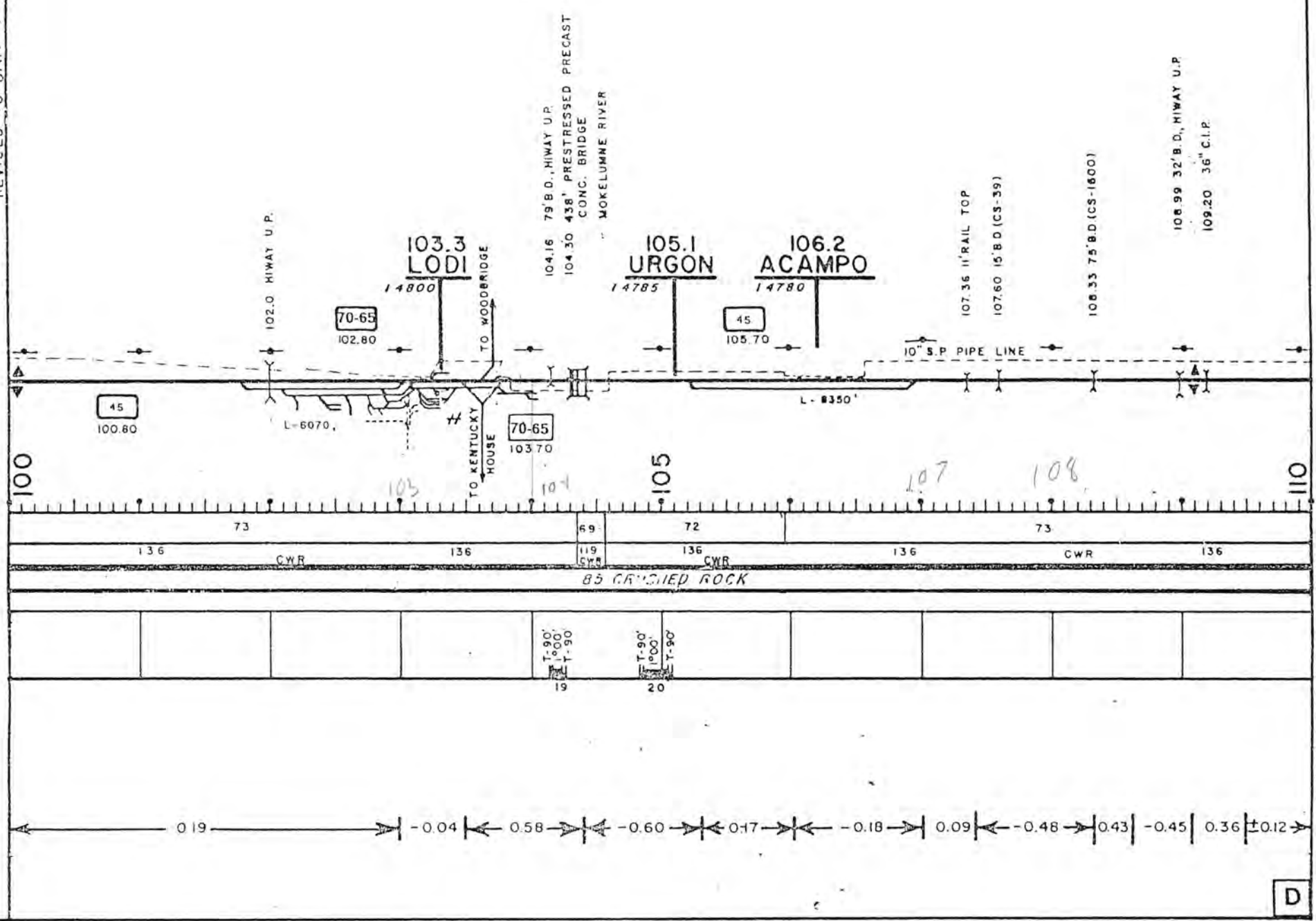
D

REVISED TO JAN 1, 1992

686

0.0574 W. 0.3085 E. 0.3053 W. 0.3085 E.

70 - 65 45 70 - 65



D

0 3053 W 0 3085 E 0.1722 W 0.1644 E.

70 - 65

REvised TO JAN 1, 1992

1041 75 B D (CS-39) FOREST LAKE SLOUGH
11059 704 B D (CS-39) DRY CREEK

11114 36" CIP

111.7
GALT
14725

11199 153 D (CS-39)

11350 60 B D (CS-39)

11372 8' RAIL TOP

11415 36" CIP

10 SP PIPE LINES

11607 43 B D (CS-200 DK)

115.5
NEED
14720

11551 15 B D (CS-39)

587 493 B D (CS-39)

11624 30 B D (CS-39 DK)

11685 225 B D (CS-39)

11707 120 B D (CS-39)

11727 120 B D (CS-1601)

11752 436 B D (CS-39) BADGER CREEK

11788 76 DK PL GIR. CONSUMERS RIVER OVERFLOW

11818 285 B D (CS-1601)

11861 84 B D (CS-39) CONSUMERS RIVER OVERFLOW

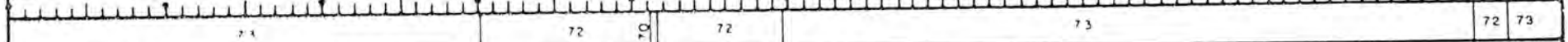
11910 245 B D (CS-1601) W APPROACH
40000 DK PL GIR. CONSUMERS RIVER
120 B D (CS-39) E APP

11955 103 THRU PL GIR HIWAY UP
1363 HIWAY OP

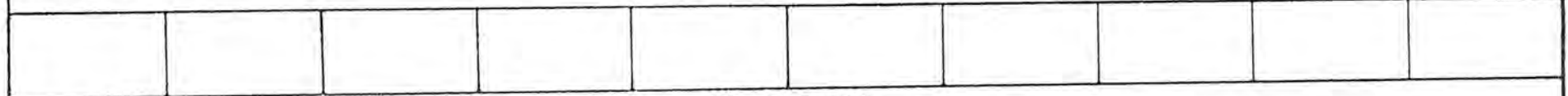
110

115

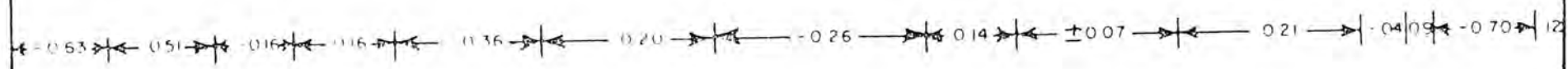
120



85 CR 1991 TIES 85 CR ROCK 1991 TIES



NO CURVES



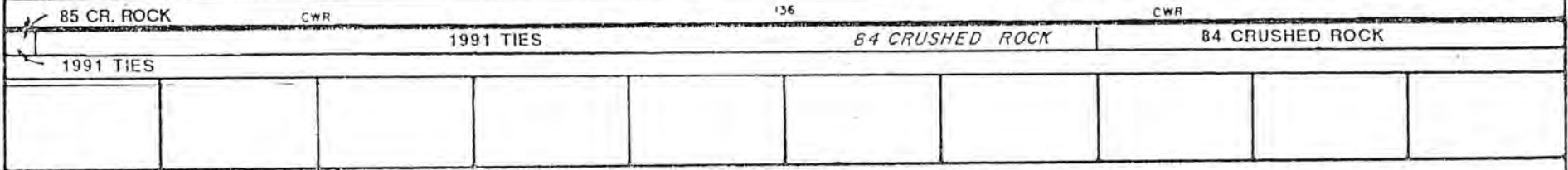
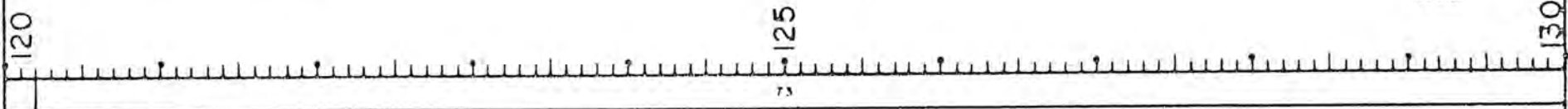
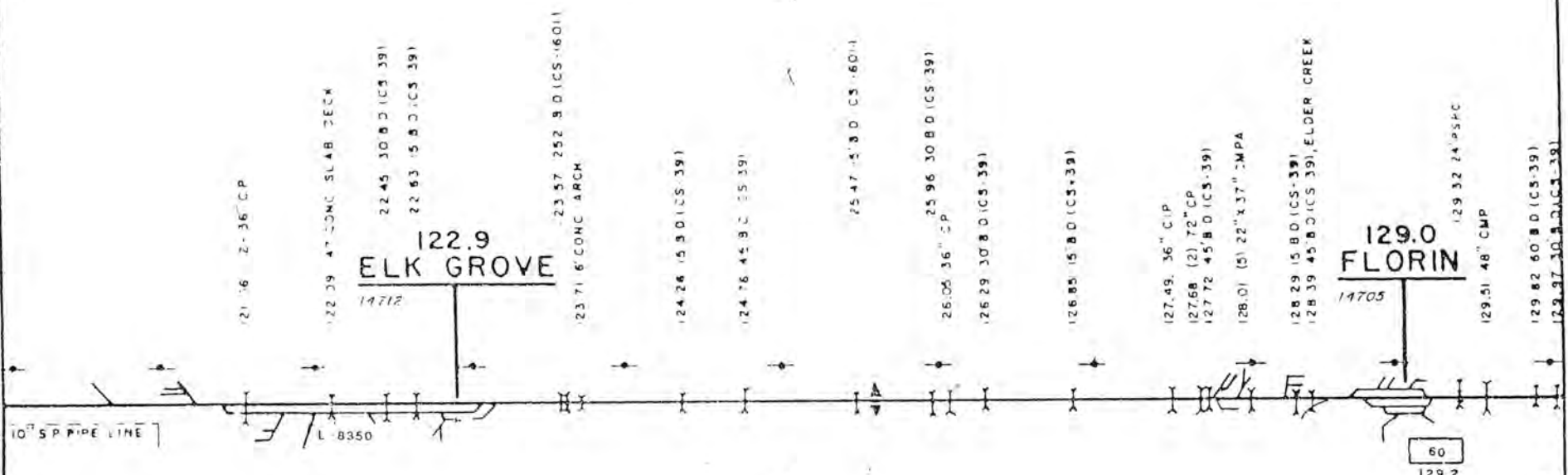
REVISED JAN 1, 1992

688

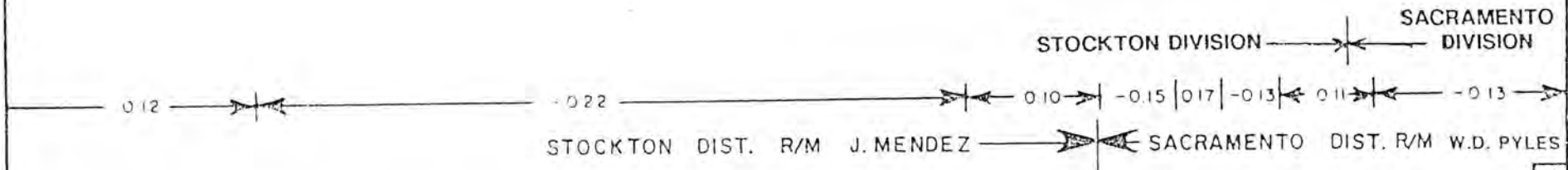
0.1722 W

0.1644 E

70 - 65

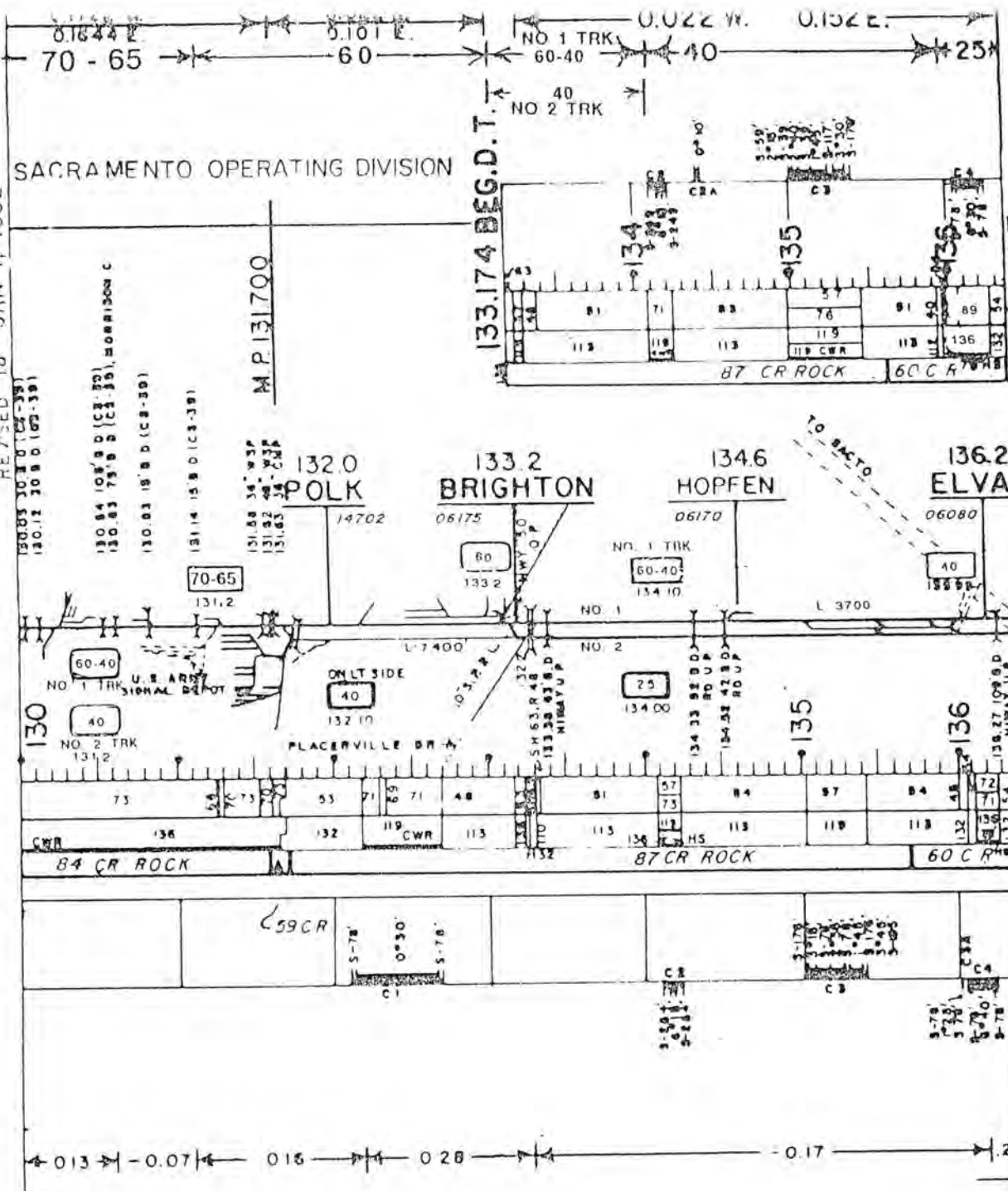


NO CURVES

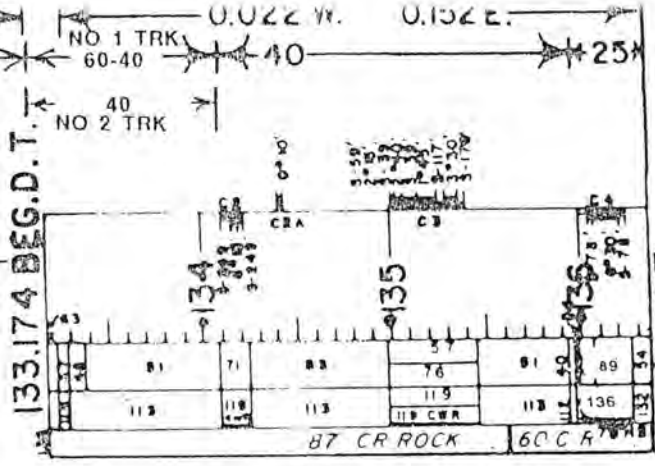


D

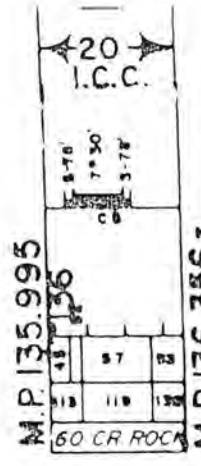
REVISED TO JAN 1, 1992



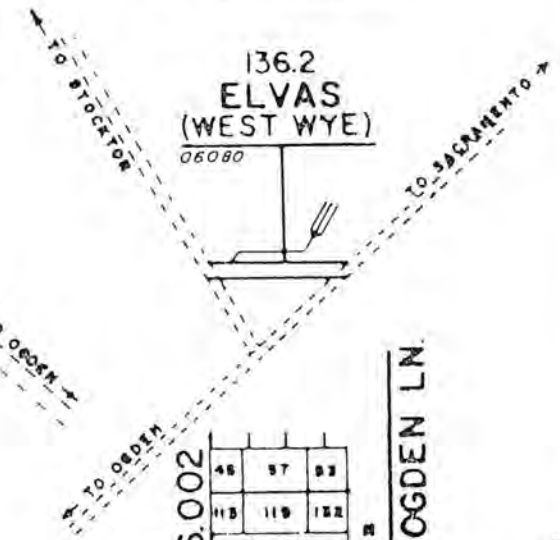
SACRAMENTO OPERATING DIVISION



M.P. 136.377 =
M.P. 92.030 OGDEN LINE



M.P. 136.356 =
M.P. 91.657 OGDEN LINE



M.P. 136.378 =
M.P. 92.032 OGDEN LN.

M.P. 136.002
M.P. 136.359 =
M.P. 91.653 OGDEN LN.