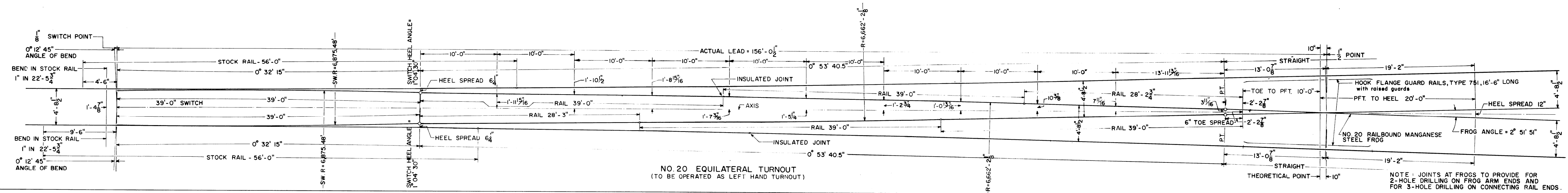


Note: Items shown shaded are furnished, installed and maintained by Communication & Signal Dept. and are shown only as information.

TIMBER PATTERN FOR NO. 20 EQUILATERAL TURNOUT



NO. 20 EQUILATERAL TURNOUT
(TO BE OPERATED AS LEFT HAND TURNOUT)

BILL OF SWITCH TIES 7" x 9"			
NO. 20 EQUILATERAL TURNOUT			
NO. OF PCS.	LENGTH	NO. OF PCS.	LENGTH
21	9'-0"	7	13'-0"
14	9'-6"	6	13'-6"
14	10'-0"	8	14'-0"
7	10'-6"	6	14'-6"
8	11'-0"	6	15'-0"
8	11'-6"	8	15'-6"
6	12'-0"	10	16'-0"
6	12'-6"		

TOTAL NO. OF PCS.135
TOTAL LIN. FT.1,607.5
TOTAL F. B. M.8,440

- See Plan 1-4 For Bolts used in Trackwork
- 3-20 For Equilateral Curved Switch
 - 3-21 For 39' Switch Details
 - 3-35 For Switch Heel Block
 - 3-45 For Tie Rods
 - 3-46 For No. 1 Tie Rod with Basket
 - 3-59 For Switch Plates
 - 3-64 For Adjustable Plates and Braces
 - 4-19 For Railbound Manganese Steel Frog
 - 4-31 For Frog Plates
 - 4-35 For Guard Rails

SOUTHERN RAILWAY SYSTEM
NO. 20 EQUILATERAL TURNOUT
WITH 39'-0" CURVED SWITCH
FOR 132-LB. R.E. RAIL

FEBRUARY 1, 1975

OFFICE OF ASST. V.P. M.W. & S.
Atlanta, Georgia

NOTE: JOINTS AT FROGS TO PROVIDE FOR 2-HOLE DRILLING ON FROG ARM ENDS AND FOR 3-HOLE DRILLING ON CONNECTING RAIL ENDS.