

**CROSSOVER**  
 13 TRACK CENTERS - Length = 192'-2 1/8" (with 16'-6" Switch)  
 192'-4 1/8" (with 15'-0" Switch)

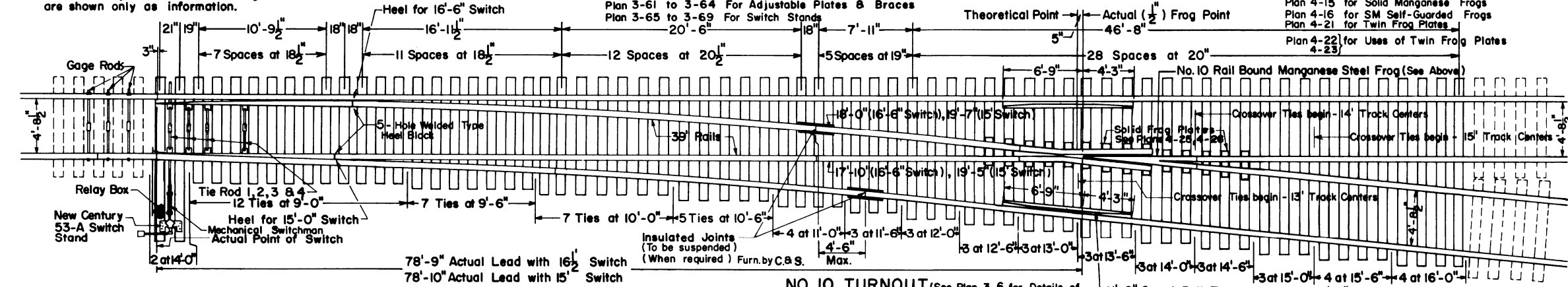
**CROSSOVER**  
 14 TRACK CENTERS - Length = 202'-1 1/16" (with 16'-6" Switch)  
 202'-3 1/16" (with 15'-0" Switch)

**CROSSOVER**  
 15 TRACK CENTERS - Length = 212'-1 1/2" (with 16'-6" Switch)  
 212'-3 1/2" (with 15'-0" Switch)

Note: Items shown shaded are furnished, installed and maintained by Communication & Signal Dept. and are shown only as information.

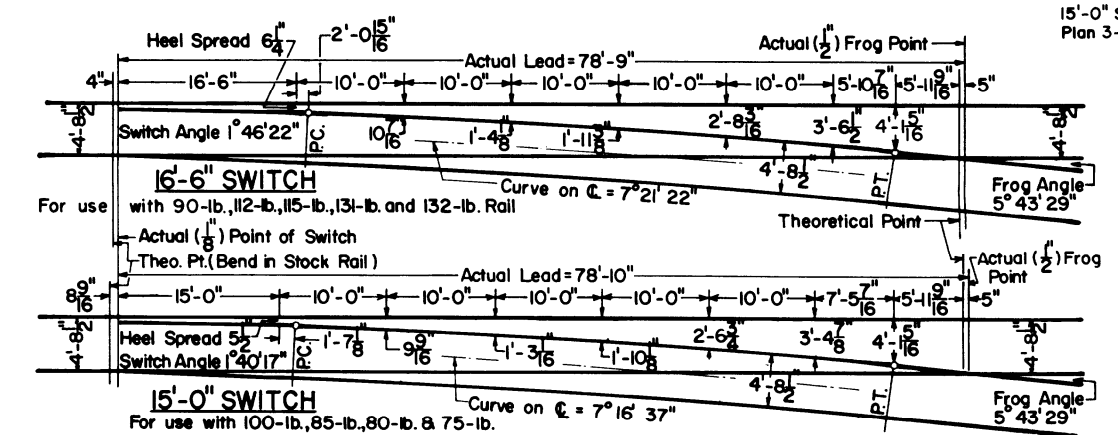
See Plan 1-4 For Bolts used in Trackwork  
 Plan 3-43 For Switch Lugs  
 Plan 3-45 For Tie Rods  
 Plan 3-53 & 3-54 - For 90-lb. & 85-lb. Sw. Pl.  
 Plan 3-55 for 100-lb. Switch Plates  
 Plan 3-56 for 112-lb., 115-lb. Switch Plates  
 Plan 3-57 for 131-lb., 132-lb.  
 Plan 3-61 to 3-64 For Adjustable Plates & Braces  
 Plan 3-65 to 3-69 For Switch Stands

See Plan 4-1 for 100-lb. Spring Frog  
 Plan 4-3 for 115-lb. "  
 Plan 4-6 for 132-lb. "  
 Plan 4-17 for 75-lb.-100-lb. for RBM Frogs  
 Plan 4-18 for 112-lb.-132-lb. for  
 Plan 4-15 for Solid Manganese Frogs  
 Plan 4-16 for SM Self-Guarded Frogs  
 Plan 4-21 for Twin Frog Plates  
 Plan 4-22 for Uses of Twin Frog Plates  
 4-23



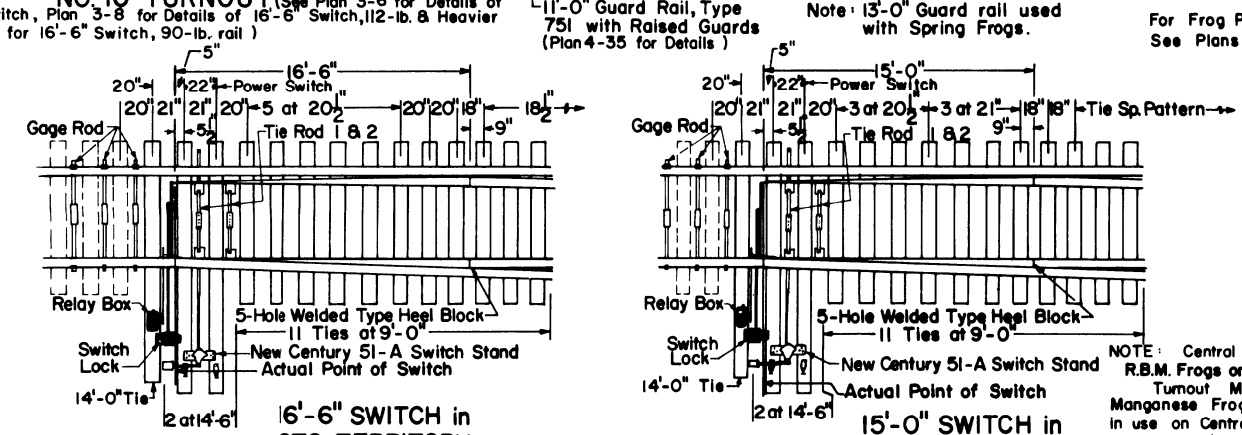
**BILL OF SWITCH TIES - 7" x 9"**

TURNOUT		CROSSOVER					
		13'-0" Track Centers		14'-0" Track Centers		15'-0" Track Centers	
No. of Pcs.	Length	No. of Pcs.	Length	No. of Pcs.	Length	No. of Pcs.	Length
12	9'-0"	3	13'-0"	6	12'-6"	4	8'-0"
7	9'-6"	3	13'-6"	24	9'-0"	10	13'-0"
7	10'-0"	5	14'-0"	16	9'-6"	6	13'-6"
5	10'-6"	3	14'-6"	16	10'-0"	4	14'-0"
4	11'-0"	3	15'-0"	17	10'-6"	14	10'-6"
3	11'-6"	4	15'-6"	15	11'-0"	11	11'-0"
3	12'-0"	4	16'-0"	8	11'-6"	9	11'-6"
3	12'-6"	4	16'-6"	8	12'-0"	10	12'-0"
Total No. of Pcs. .... 69		Total No. of Pcs. .... 136		Total No. of Pcs. .... 136		Total No. of Pcs. .... 136	
Total Lin. Ft. .... 813		Total Lin. Ft. .... 1,449.5		Total Lin. Ft. .... 1,500.5		Total Lin. Ft. .... 1,551.5	
Total F.B.M. .... 4,268		Total F.B.M. .... 7,609		Total F.B.M. .... 7,878		Total F.B.M. .... 8,145	



**OFFSET DIAGRAMS**

Note: Offsets measured from gage side of stock rail to gage side of turnout rail.



**16'-6" SWITCH in CTC TERRITORY**  
 (Plan 3-7 for CTC and Other locations)

**15'-0" SWITCH in CTC TERRITORY**  
 (Plan 3-5 for CTC and Other locations)

For Frog Plates Details, See Plans 4-25 & 4-26

**NO. 10 TURNOUT-LENGTHS OF LEAD RAILS**

WEIGHT OF RAIL	RAIL FOR			
	FLAT SOLID MANGANESE	SELF-GUARDED SOLID MANG.	RAILBOUND MANGANESE	SPRING FROG
	Straight	Curved	Straight	Curved
112-lb. & Over 16'-6" Switch	58'-6"	58'-8"	58'-6"	58'-8"
90-lb., 112, 115 16'-6" Switch	59'-3"	59'-5"	59'-6"	59'-8"
100-lb. 15'-0" Switch	60'-10"	61'-0"	61'-0"	61'-2"
85-lb. 15'-0" Switch	60'-10"	61'-0"	61'-1"	61'-3"
80-lb. & 75-lb. 15'-0" Switch	60'-10"	61'-0"	61'-3"	61'-5"

Central of Georgia

**SOUTHERN RAILWAY SYSTEM**  
**NO. 10 TURNOUT WITH**  
**15'-0" and 16'-6" STRAIGHT SWITCHES**  
**WITH DETAILS OF TIMBER PATTERNS**  
**FOR TURNOUT AND CROSSOVERS**  
 FEBRUARY 1, 1975  
 OFFICE OF ASST. V.P. M. W. & S.  
 Atlanta, Georgia

NOTE: Central of Ga. Standard is for 16'-6" Switch. R.B.M. Frogs on Cent. of Ga. are A.R.E.A. Std. Turnout Materials, especially Railbound Manganese Frogs, and Switch Points and Plates in use on Central of Georgia and probably in other recently acquired trackages differ from Southern Railway Standards. When ordering for these lines, special care must be used in measuring and describing the materials.