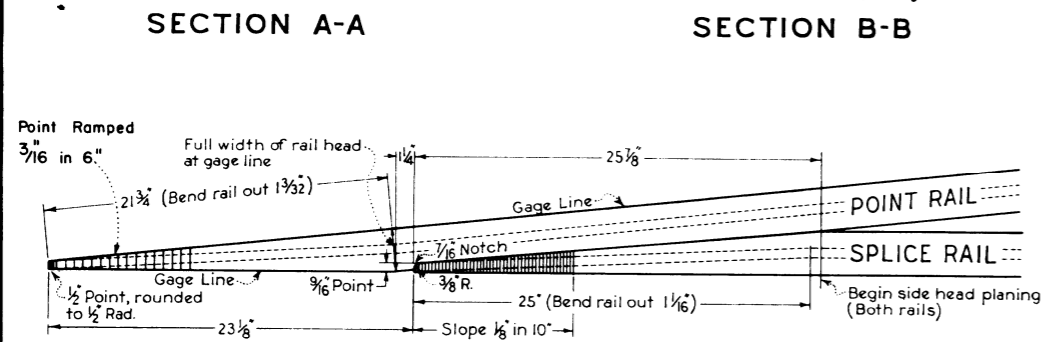
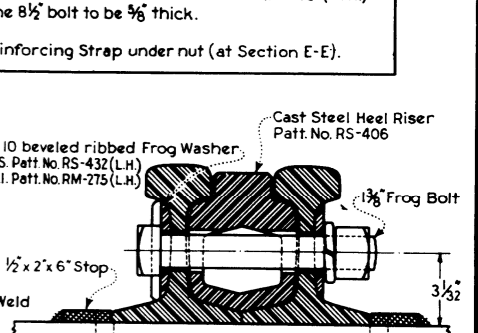
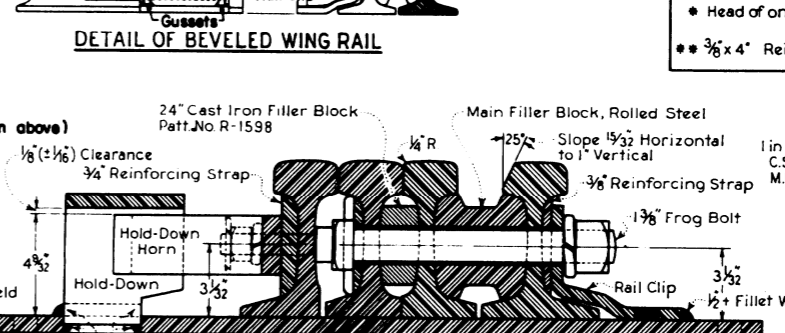
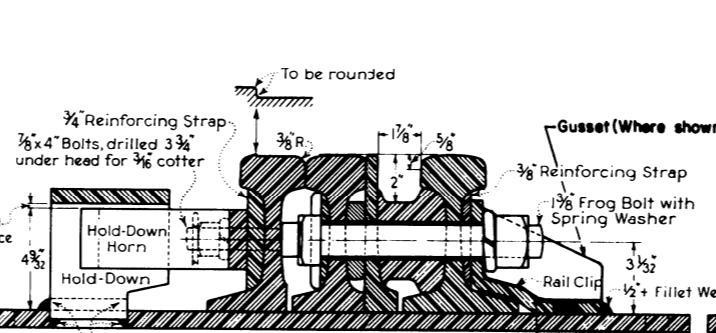
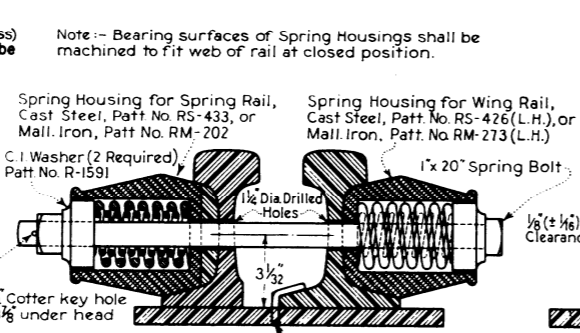
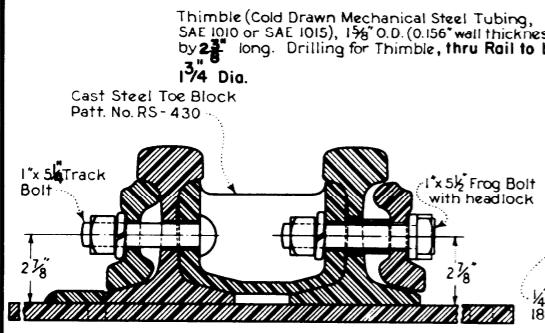


FROG BOLTS AND SPECIAL WASHERS REQUIRED

••	2 Bolt $1\frac{1}{8} \times 8\frac{1}{2}$ with 1 in 20 beveled ribbed Frog Washers	Cast Steel, Patt. No. RS-410 (L.H.)
••	1 - - - 9	Mall. Iron, - - - RS-433 (L.H.)
••	1 - - - 9 $\frac{1}{2}$	Mall. Iron, - - - RM-256 (R.H.)
••	1 - - - 10	Mall. Iron, - - - RM-276 (L.H.)
••	1 - - - 11	with 1 in 10 beveled ribbed Frog Washers
••	1 - - - 12	Cast Steel, Patt. No. RS-431 (R.H.)
••	1 - - - 13	Cast Steel, Patt. No. RS-432 (L.H.)
••		Mall. Iron, - - - RM-274 (R.H.)
••		Mall. Iron, - - - RM-275 (L.H.)

• Head of one $8\frac{1}{2}$ bolt to be $\frac{3}{8}$ " thick.
•• $\frac{3}{8} \times 4$ " Reinforcing Strap under nut (at Section E-E).



NOTES:

- Bolts and nuts to conform to Southern Railway current Standard Plan and Specifications for Frog Bolts.
- All bolts, except Spring Bolt, to have spring washers. Through bolts to have Southern Railway Standard Frog Washers. Other bolts to have headlock washers.
- Drilled holes to have burrs removed.
- Round spike holes in base plates to be $\frac{15}{16}$ " dia. for $\frac{7}{8} \times 7$ " drive screw spikes with washer head and tapered shank for wedge fit. Other spike holes in Toe and Heel Base Plates to be $\frac{3}{4}$ " square.
- Rail ends to be flame hardened, Brinell hardness 360-375. Rail ends to be beveled.
- Stops and hold-downs to have $\frac{1}{4}$ " clearance with Spring Rail when flangeway is sprung to $1\frac{1}{8}$ " width at $\frac{1}{2}$ " point.
- Main Filler Block to be rolled steel in one continuous length with single (top) or double (top and bottom) groove, and shall be machined to a true fit with webs of adjacent rails. It shall maintain a $1\frac{1}{8}$ " flangeway width throughout.
- Joinery of members and all workmanship to conform to highest standard of shop practice.
- Spot weld near bottom of reinforcing strap at heel end of Wing Rail to insure proper contact with web of rail for rail bonding.
- Toe and Heel Base Plates to be marked as indicated to show weight of rail and whether right or left hand.

SOUTHERN RAILWAY SYSTEM
NO. 10 SPRING RAIL FROG
 FOR R. E. SECTION 115
 FEBRUARY 1, 1975
 OFFICE OF ASST. V. P. MW & S.
 ATLANTA, GEORGIA