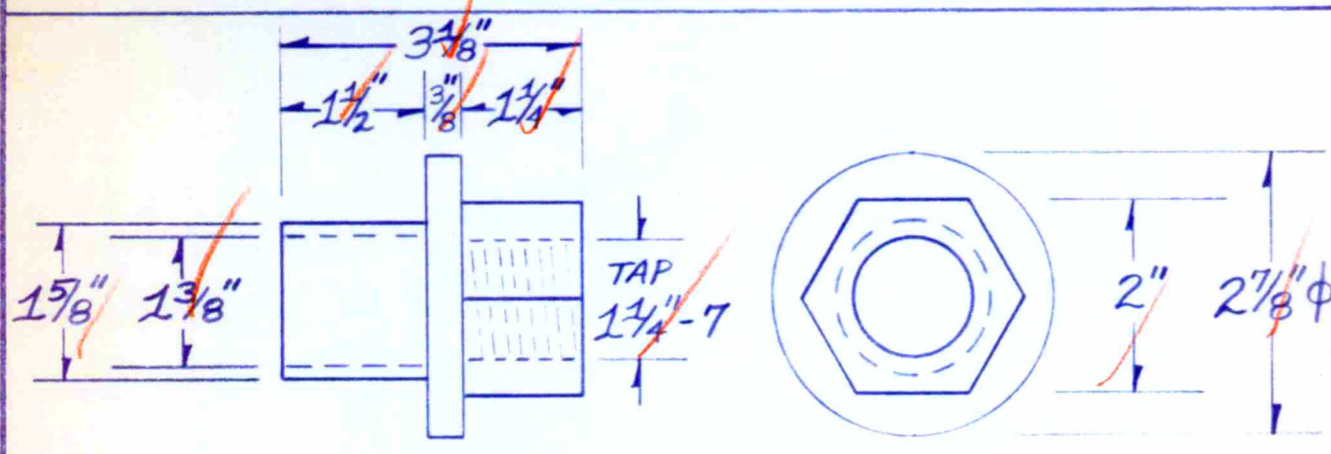
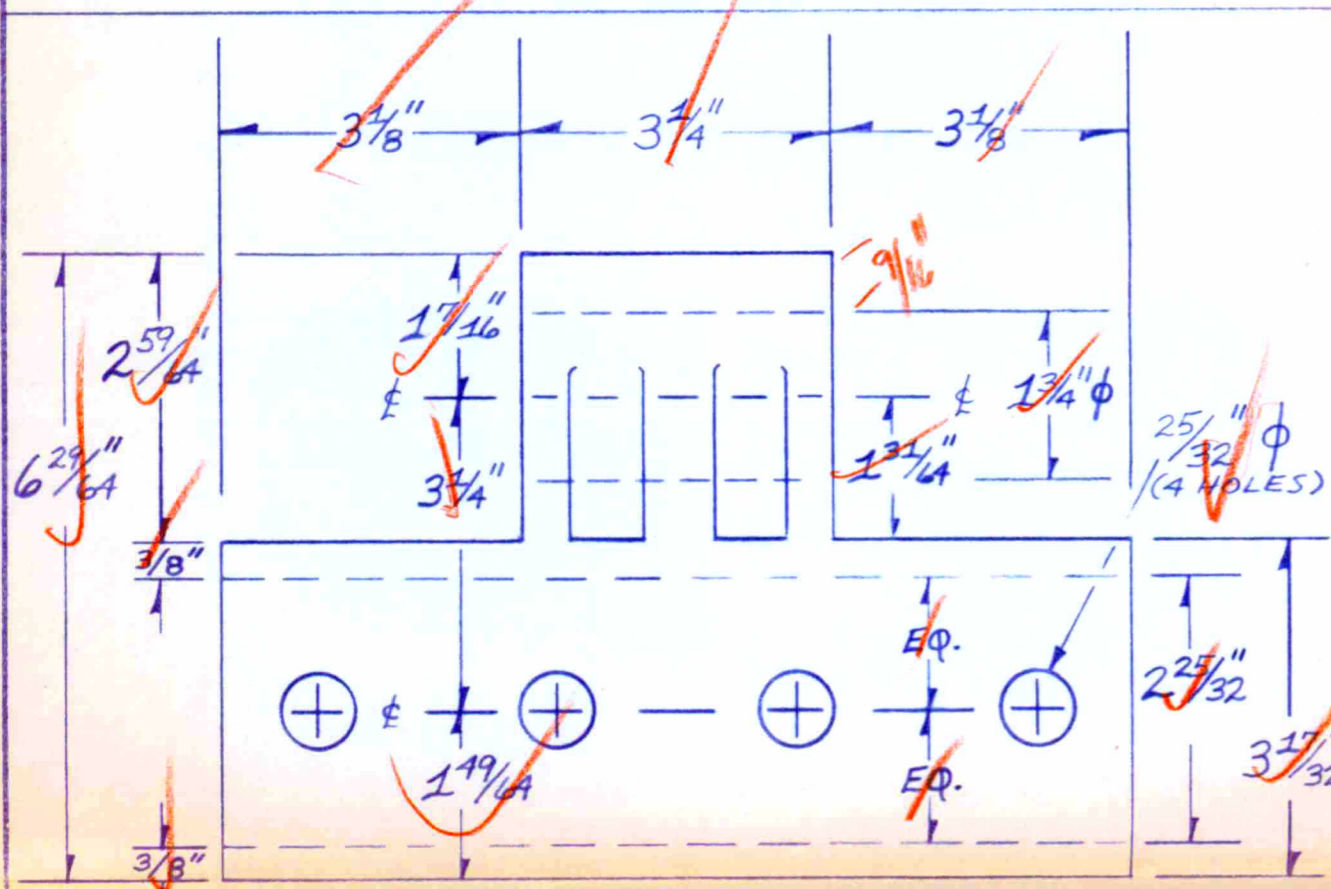


ITEM 5



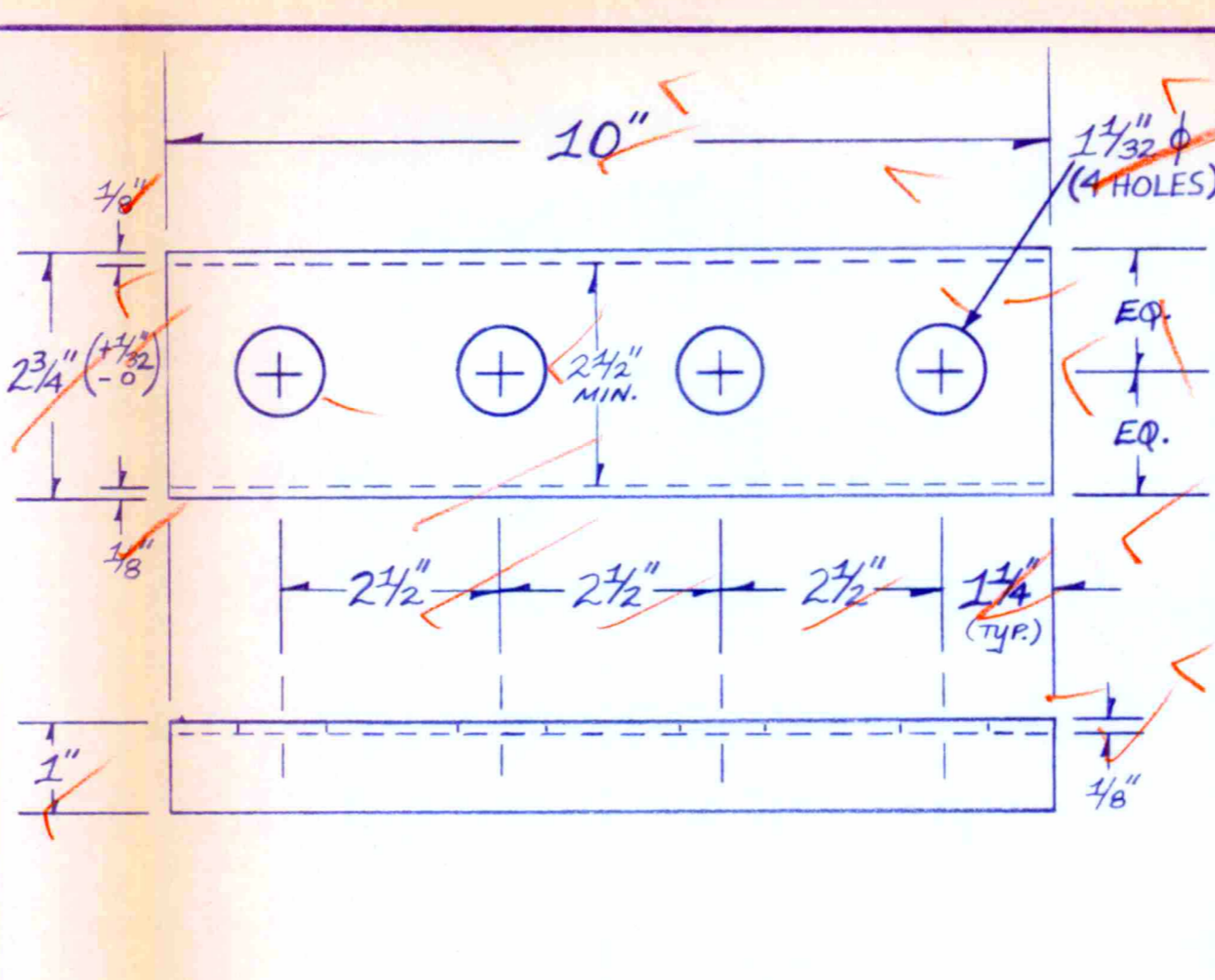
ITEM 4



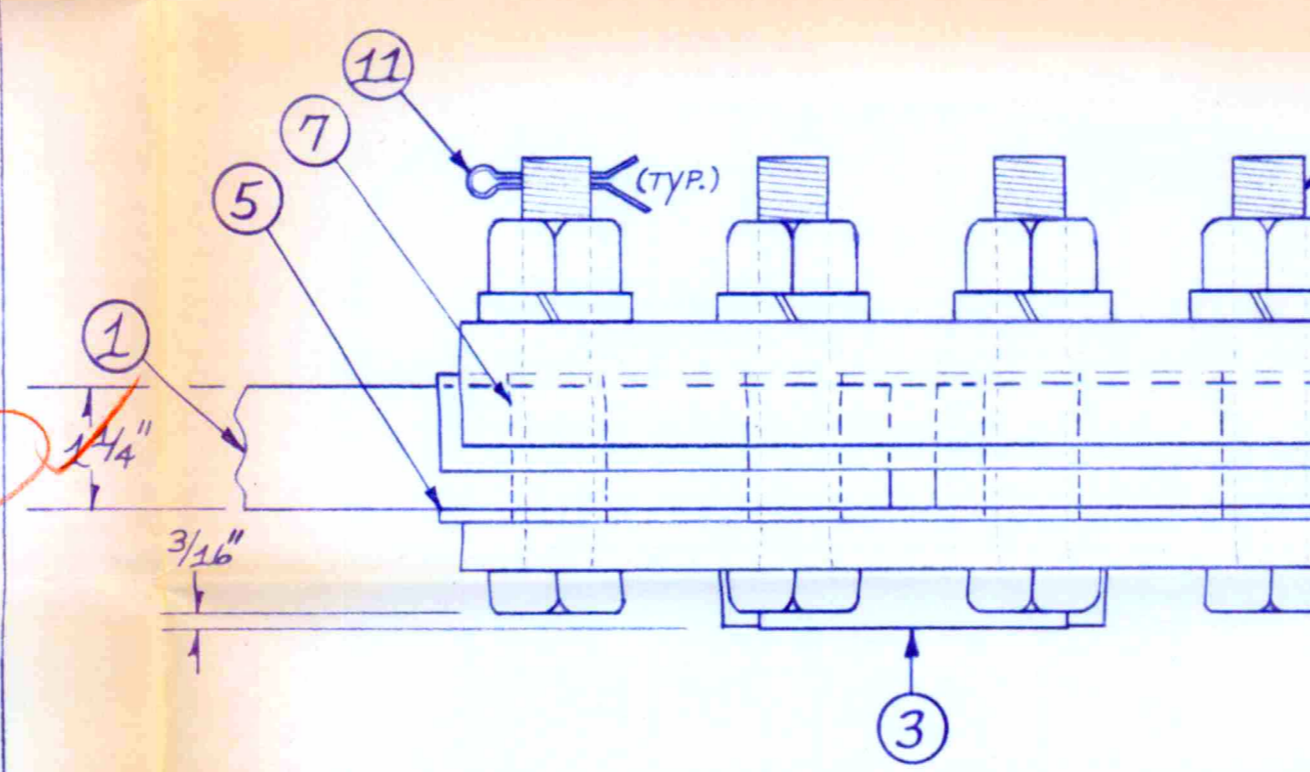
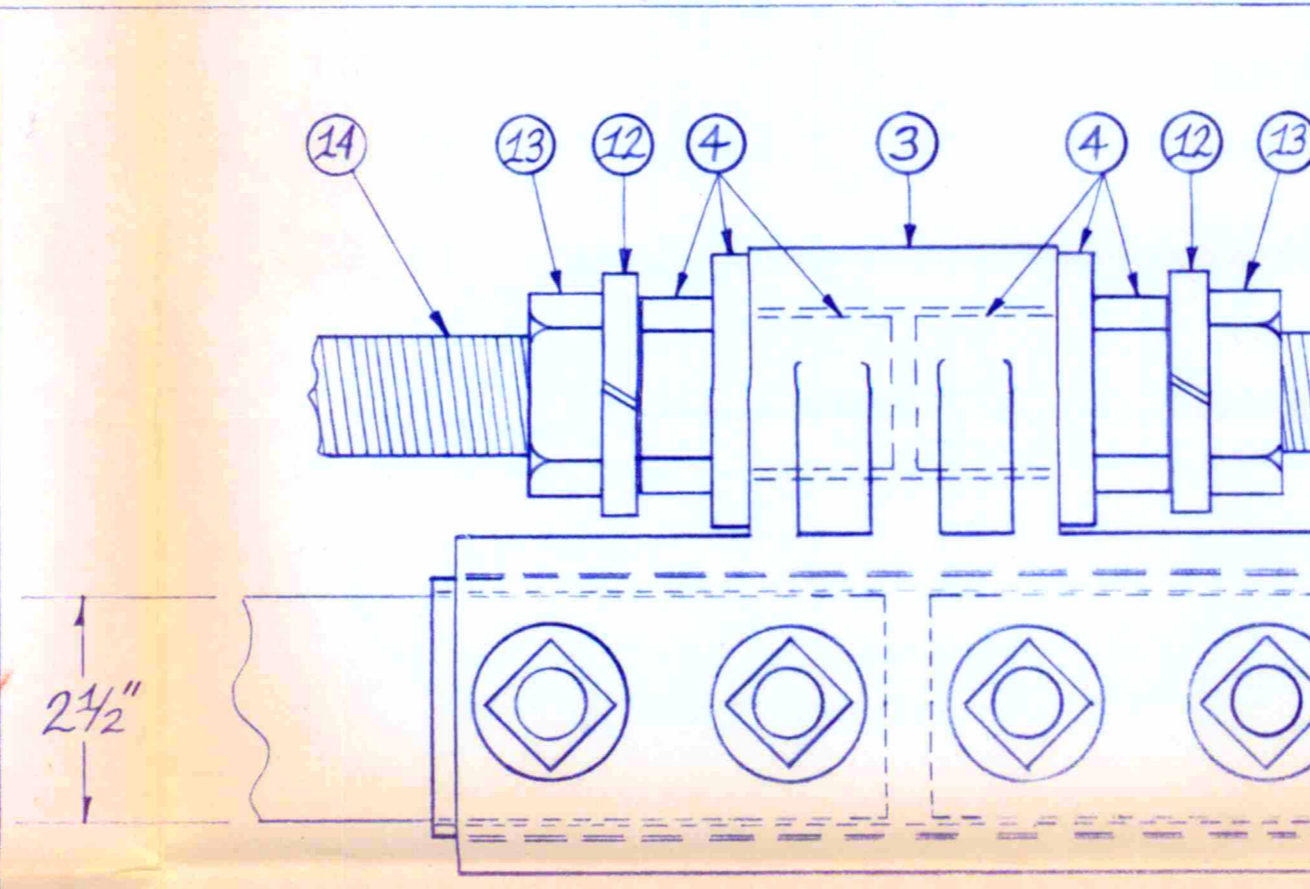
ITEM 3

NOTES :

- 1) VULCANIZED FIBRE IS AS MANUFACTURED BY THE N.V.F. COMPANY OR OTHER APPROVED SOURCE;
- 2) ITEM 12 IS A 1 1/4" SPRING WASHER;
- 3) ITEM 13 IS A 1 1/4"-7 UNC HEX NUT;
- 4) ITEM 14 IS A 1 1/4"-7 UNC PARTIALLY THREADED OPERATING ROD;



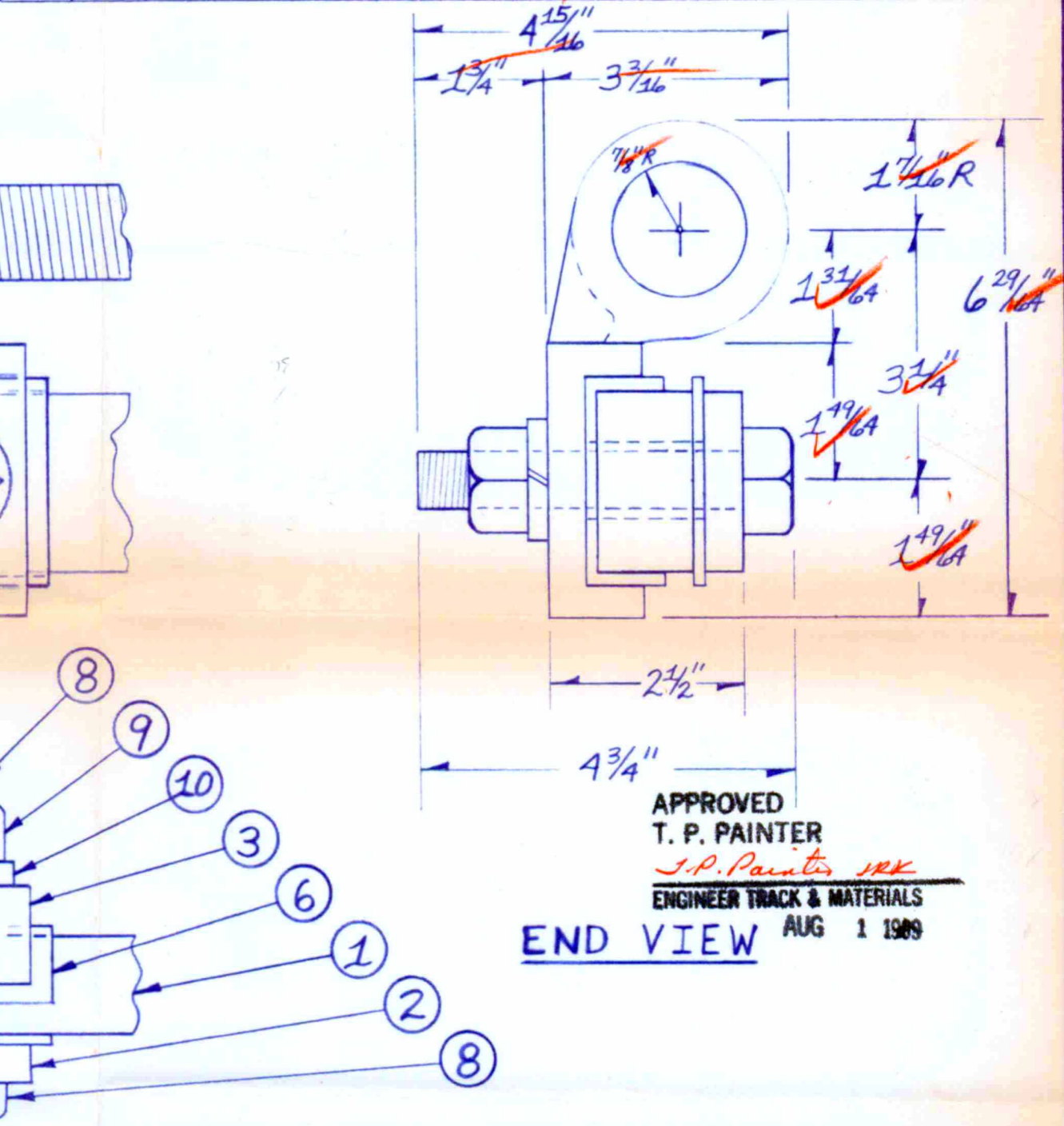
ITEM 6



NOTES :

- 5) ITEMS 12, 13 AND 14 NOT PROVIDED BY BENTECH;
- 6) ITEMS 1 AND 2 ARE AS SHOWN ON SHEET #1 OF 2;
- 7) ITEM 7 IS DETAILED (AS ITEM 8) ON SHEET #1 OF 2;
- 8) ITEM 8 IS DETAILED (AS ITEM 4) ON SHEET #1 OF 2;
- 9) ITEMS 3 AND 4 ARE MACHINED FROM PURCHASED CASTINGS.

BILL OF MATERIALS			
ITEM	QTY.	MATERIAL	DESCRIPTION
①	2	A-36 STEEL	1 1/4" x 2 1/2" x 40 1/4" FLAT BAR
②	1	A-36 STEEL	1/2" x 2 1/2" x 9 1/2" FLAT BAR
③	1	MALLEABLE IRON	CAST BASKET
④	2	MALLEABLE IRON	CAST SLEEVE
⑤	1	VULCANIZED FIBRE	1/8" x 2 3/4" x 10" FLAT SHEET
⑥	1	VULCANIZED FIBRE	1/8" x 4 3/4" x 10" FLAT SHEET (FORMED)
⑦	4	VULCANIZED FIBRE	1" O.D. x 3/4" OR 25/32" I.D. TUBING
⑧	4	HEAT TREATED STEEL	3/4"-10 x 4 1/4" SQ. HD. (ASTM A-449 TYPE 1 OR SAE J-429, GRADE 5)
⑨	4	STEEL	3/4"-10 HEAVY SQ. NUTS (GRADE 5)
⑩	4	HEAT TREATED STEEL	3/4" LOCKWASHERS (A.R.E.A. 1967)
⑪	4	STEEL	3/16" COTTER PINS



APPROVED  
T. P. PAINTER  
S.P. Painter  
ENGINEER TRACK & MATERIALS  
AUG 1 1989

		NAME 16'-6" SWITCH ROD #1 (115 RE) WITH BASKET ADJUSTMENT	
DR. MM	SCALE N.T.S.	NUMBER 640-	
CH. JRB	DATE 24 JUL 89	008977	
NO.	REVISION	BY	DATE