

CONSOLIDATED RAIL CORPORATION

**ConRail**

**INFORMATION**

and

**INSTRUCTION  
MANUAL**

---

Effective April 1, 1976

• EASTERN REGION

## PREFACE

The management of ConRail is dedicated to effecting an orderly transition of personnel and properties from the various railroads into a cohesive organization and operation.

The magnitude and complexity of accomplishing this goal has been - and continues to be - compounded by various changes and uncertainties. The information and instructions contained herein will provide initial direction on those matters which are believed to have been finalized when the manual was prepared. A record should be maintained of those who receive this manual so that any corrections or additional instructions will receive the same distribution.

We are confident that by everyone's use of good judgment, understanding and cooperation, with the application of your individual and collective experience, we will successfully meet the challenges of the days ahead.

## INDEX

	<u>Page</u>
Map	
Addendum to:	
"Disposition of Existing Lines"	
"CRC Operating Jurisdiction of Lines"	I/V
Disposition of Existing Lines (Applicable to Territory)	
CRC Operating Jurisdiction of Lines (Applicable to Territory)	
 ORGANIZATION CHARTS	
Chairman and Chief Executive Officer	A-1
President and Chief Operating Officer	A-2
 OPERATIONS DEPARTMENT INSTRUCTIONS	
Freight Train Schedules	B-1
Classification Manuals	B-1
Consignee Classification Lists	B-1
Through and Local Freight Train Operation	B-1
Freight Car Utilization and Associated Reporting	B-2
Dispatcher Territories and Implementing General Order	B-3
Forms Used in Operation of Trains	B-4
Locomotive Distribution	B-4
Railroad Operating Rules and Practices	
Tests and Inspections	B-5
Radio Equipment and Frequencies	B-6
Operation and Jurisdictional Changes	B-6
Safety Department Responsibilities and Functions	B-7
Passenger Operations	B-8
Station Department	B-9
FACTerminal Locations	B-10
FACT Training Coordinators	B-11
Freight Claims and Prevention	B-12
ConRail Interchange Connections Discontinued	B-13/16
Functions of the Police Department	B-17/19
Engineering Department Instructions and Standards	B-20
MW Divisional Reports	B-21
Derailment Reports	B-21
Slow Orders	B-21
T & S Production Reports	B-22
Rail Laying Report By Gangs	B-22
Ballast Cleaning Report	B-22
Rail Grinding Report	B-22
Smoothing Report	B-22
Personal Injury Report	B-23
Detector Car Report	B-23
Defective Rail In Track	B-23
Program Completion Statement	B-23
State Codes For Production Reports	B-24

INDEX  
(Continued)

	<u>Page</u>
OPERATIONS DEPARTMENT INSTRUCTIONS (Continued)	
Regional Signal Department Reports	B-25
Instructions For Handling of Wire, Pipe and Private Grade Crossings to Occupy Properties of ConRail	B-26
GENERAL INSTRUCTIONS	
Telephone Directories	C-1
ConRail Telephone System	C-2
Telephone Dial Charts	C-3/4
Telephone System Network	C-5*
Pass Privileges	C-5
Labor Agreements	C-5
Law Department	C-5
Leasing of Vehicles	C-6
Public Affairs Department	C-7
Gasoline Credit Cards	C-8
Preparation of "Request for Medical Service" MD-40	C-9
Copy of Form MD-40	C-10
Stock Interests Designated to ConRail	C-11
REGULATORY AND INTERDEPARTMENTAL POLICIES	
Applicability of the Hours of Service Act	D-1/4
Applicability of OSHA Regulations	D-5/9
Applicability of FHWA Regulations	D-10/11

**MAPS**

**Maps of the ConRail System, Regions and  
Divisions will be distributed under separate cover.**

ADDENDUM TO  
"DISPOSITION OF EXISTING LINES"  
"CRC OPERATING JURISDICTION OF LINES"

I

The following are the abbreviations used in the subject reports to indicate the status and jurisdiction of each line of the various railroads.

"RD" (Previous)

AA	-	Ann Arbor RR
CJ	-	Central Railroad of New Jersey
EL	-	Erie Lackawanna RR
LH	-	Lehigh & Hudson River RR
LV	-	Lehigh Valley RR
PC	-	Penn Central
SL	-	Pennsylvania-Reading Seashore Lines
RD	-	Reading RR
NC	-	Penn Central - Northeast Corridor Region
CE	-	Penn Central - Central Region
WE	-	Penn Central - Western Region
NE	-	Penn Central - Northeastern Region
NO	-	Penn Central - Northern Region
SO	-	Penn Central - Southern Region
MR	-	Penn Central - Metropolitan Region

"DV" (Previous)

CH	-	Chesapeake Div.
PH	-	Philadelphia Div.
NJ	-	New Jersey Div.
HB	-	Harrisburg Div.
PG	-	Pittsburgh Div.
AL	-	Allegheny Div.
VA	-	Valley Div.
CG	-	Chicago Div.
FW	-	Fort Wayne Div.
TO	-	Toledo Div.
CL	-	Cleveland Div.
NE	-	New England Div.
MH	-	Mohawk-Hudson Div.
BF	-	Buffalo Div.
DE	-	Detroit Div.
CA	-	Canada Div.
MI	-	Michigan Div.
CO	-	Columbus Div.
CI	-	Cincinnati Div.
SW	-	Southwest Div.
MR	-	Metropolitan Region
PE	-	Peoria & Eastern RR

Erie Lackawanna Divisions

NK	-	New York Div.
SC	-	Scranton Div.
SQ	-	Susquehanna Div.
MA	-	Mahoning Div.
MN	-	Marion Div.

Lehigh Valley RR Divisions

NY	-	New York Div.
BU	-	Buffalo Div.

Other Railroads

Same as Item No. 1, "RD"

"RG" (CRC) - (Including lines owned and operated by others over which CRC has trackage rights).

AT - Atlantic Region  
 CE - Central Region  
 MR - Metropolitan Region  
 EA - Eastern Region  
 NE - Northeastern Region  
 NO - Northern Region  
 SO - Southern Region  
 WE - Western Region  
 ES - Lines Remaining with the Estate  
 OT - Lines Owned By or Conveyed to Another Railroad

"DV" (CRC) - (Including lines owned and operated by others over which CRC has trackage rights).

EB - Elizabeth Div.	SE - Seashore Div.
HO - Hoboken Div.	BF - Buffalo Div.
LD - Lehigh Div.	MH - Mohawk-Hudson Div.
SC - Scranton Div.	NE - New England Div.
SQ - Susquehanna Div.	CA - Canada Div.
AL - Allegheny Div.	DE - Detroit Div.
PG - Pittsburgh Div.	MI - Michigan Div.
VA - Valley Div.	CI - Cincinnati Div.
MA - Mahoning Div.	CO - Columbus Div.
MR - Metropolitan Region	SW - Southwest Div.
CH - Chesapeake Div.	CG - Chicago Div.
HB - Harrisburg Div.	CL - Cleveland Div.
NJ - New Jersey Div.	FW - Fort Wayne Div.
PH - Philadelphia Div.	TO - Toledo Div.
RE - Reading Div.	

Where "RG" (CRC) is "ES", "DV" column indicates which railroad's estate retains jurisdiction.

Where "RG" (CRC) is "OT", "DV" column indicates the railroad which owns or to which the line is conveyed.

"ST"

Standard state abbreviations, plus:

CN - Canada

Cols #6 through #11, Inclusive

This section on lines, stations and mile posts is generally self-explanatory. In most cases, the line name, code and mile posts are taken from track charts. These may differ slightly from timetable designations.

"OWN"

The owner of the railroad on "Day 1." In most cases the designations are self-explanatory. Where the line remains with the Estate, the two letter railroad abbreviation used in "RD" is followed by an "E".

Others are:

CRCA - ConRail for reconveyance to Amtrak.  
 CRCN - ConRail for reconveyance to New Jersey.  
 CRCS - ConRail for reconveyance to SEPTA.  
 CRCP - ConRail for reconveyance to Pennsylvania.

"OPN CNT"

The railroad that controls operation (dispatches the trains).

"CR OP"

The nature of ConRail's operation on the line--

F - Freight  
 P - Passenger (Under Contract)  
 O - No ConRail operation.

"PSG OPN"

The agency for which passenger service is or may be operated over the line.

AM - Amtrak  
 AF - Amtrak - Future  
 NJ - New Jersey DOT  
 ST - SEPTA  
 PA - Port Authority of New York (PATH)  
 RI - Rhode Island

"PSG OPN" (Continued)

MT - Metropolitan Transportation Authority  
 CT - Connecticut Transportation Authority  
 MB - Massachusetts Bay Transportation Authority  
 MF - Maryland - Future  
 RF - Rhode Island - Future  
 IN - Indiana  
 IL - Illinois

"TRACKAGE RIGHTS"

The railroads that have trackage rights over the line.

This may also indicate who subsidizes the operation of a light density line.

"SPEC COND"

Special conditions that apply to the line:

SUB - Operated under subsidy.  
 AVS - May be operated under subsidy.  
 LOP - Leased Operation.  
 OS - Out of service.  
 AB - Abandoned.

"CC"

The general status of the line under USRA FSP.

- 1 - Lines ConRail buys and operates
- 2 - Lines ConRail buys for conveyance to others (Amtrak, etc.)
- 3 - Lines ConRail buys but does not operate.
- 4 - Lines which may be operated under subsidy (left with Estate).
- 5 - Lines conveyed to or owned by other roads.
- 6 - Lines to be abandoned (left with Estate).
- 7 - Lines over which ConRail has trackage rights or leases for operation, etc.
- 8 - Lines which will be operated under subsidy (owned by estate).

SPECIAL NOTE

The information on the "Disposition of Existing Lines" (pre-conveyance jurisdiction) and "CRC Operating Jurisdiction of Lines" (post-conveyance jurisdiction), on the following pages represents that which was understood at time printed. Any questions or corrections should be directed to the General Manager, Transportation Planning.

All concerned will be advised of any corrections or changes as they become known.

B

"DISPOSITION OF EXISTING LINES"  
(Pre-Conveyance Jurisdiction)

Central R.R. of New Jersey

3/24/76

CONRAIL ACTIVATION PLAN

DISPOSITION OF EXISTING LINES

PAGE CJ-CJ 1-A

JURISDICTION	PRV	RD	DV	RG	DV	ST	NAME	CODE	FROM	TO	MILE FROM	POST TO	OWN	OPN CNT	CR OP	PSGR OPNS	TRACKAGE RIGHTS	SPC CND	
CJ	CJ	ES	CJ	NJ	M/L	CNJ	0201	JERSEY CITY	COMMUNIPAW		0.0	1.0	CJE		0			OS	6
CJ	CJ	AT	EB	NJ	M/L	CNJ	0201	COMMUNIPAW	BAYONNE 33ST		1.0	5.0	CRC	CRC	F				1
CJ	CJ	AT	EB	NJ	M/L	CNJ	0201	BAYONNE 33ST	BAYONNE BV		5.0	7.0	CRC	CRC	FP	NJ			1
CJ	CJ	ES	CJ	NJ	M/L	CNJ	0201	BAYONNE BV	ELIZABETHPORT FH		7.0	8.9	CJE		0			AVS	4
CJ	CJ	AT	EB	NJ	M/L	CNJ	0201	ELIZABETHPORT FH	PHILLIPSBURG		8.9	72.1	CRC	CRC	FP	NJ			1
CJ	CJ	AT	EB	NJ	WEST	SIDE BR	0202	COMMUNIPAW	WEST SIDE AV		1.0	3.6	CRC	CRC	F				1
CJ	CJ	AT	EB	NJ	NEWARK & NY	BR	0203	BRILLS JCT	NEWARK		5.5	7.3	CRC	CRC	F				1
CJ	CJ	AT	EB	NJ	NEWARK & NY	BR	0204	KEARNY	BRILLS JCT		4.0	5.5	CRC	CRC	F				1
CJ	CJ	AT	EB	NJ	NWK&E	BETH BR	0205	BRILLS JCT	OAK ISLAND JCT		0.0	1.7	CRC	CRC	F				1
CJ	CJ	AT	EB	NJ	NWK&E	BETH BR	0205	OAK ISLAND JCT	ELIZABETHPORT		1.7	5.5	CRC	CRC	F				1
CJ	CJ	ES	CJ	NJ	SOUTH	BR	0206	SOMERVILLE	ROYCE		0.0	3.1	CJE		0		C&O		1
CJ	CJ	ES	CJ	NJ	SOUTH	BR	0206	ROYCE	FOSTERS LANE		3.1	13.7	CJE		0			AVS	4
CJ	CJ	OT	RR	NJ	SOUTH	BR	0206	FOSTERS LANE	FLEMINGTON		13.7	15.7	BRW	BRW	0			OS	6
CJ	CJ	ES	CJ	NJ	HIGH	BRIDGE BR	0207	HIGH BRIDGE	HOPATCONG JCT		0.0	22.0	CJE		0				5
CJ	CJ	AT	EB	NJ	HIGH	BRIDGE BR	0207	HOPATCONG JCT	GEN FOAM		22.0	31.6	CRC	CRC	F			AVS	4
CJ	CJ	AT	EB	NJ	LK	HOPATCONG BR	0208	HOPATCONG JCT	LAKE JCT		0.0	0.6	CRC	CRC	F				1
CJ	CJ	AT	EB	NJ	LK	HOPATCONG BR	0208	LAKE JCT	MORRIS COUNT JCT		0.6	0.9	CRC	CRC	F				1
CJ	CJ	ES	CJ	NJ	WHARTON & NO	RR	0209	GREEN POND JCT	PICATINNY		0.0	11.1	CJE		0			AB	6
CJ	CJ	AT	EB	NJ	WHARTON & NO	RR	0209	PICATINNY	MORRIS CNTY JCT		11.1	14.6	CRC	CRC	F				1
CJ	CJ	AT	EB	NJ	MT	HOPE MIN RR	0210	WHARTON	MOUNT HOPE		0.0	3.6	CRC	CRC	F				1
CJ	CJ	AT	EB	NJ	PERTH	AMBOY BR	0211	ELIZABETHPORT	WOODBIDGE JCT		9.5	20.0	CRC	CRC	F				1
CJ	CJ	AT	EB	NJ	PERTH	AMBOY BR	0211	WOODBIDGE JCT	RARITAN RV NORTH		20.0	21.7	CRC	CRC	FP	NJ			1
CJ	CJ	AT	EB	NJ	PERTH	AMBOY BR	0211	WOODBIDGE JCT	RARITAN RV NORTH		20.0	21.7	CRC	CRC	FP	NJ			1
CJ	CJ	AT	EB	NJ	PERTH	AMBOY BR	0211	RARITAN RV NORTH	NORTH SHORE		21.7	23.2	CRC	CRC	F				1
CJ	CJ	AT	EB	NJ	SOUND	SHORE BR	0212	RAYWAY	WARNERS		0.8	3.5	CRC	CRC	F				1
CJ	CJ	AT	EB	NJ	CARTERET	BR	0213	RAHWAY	PETROLEUM		0.0	1.5	CRC	CRC	F				1
CJ	CJ	AT	EB	NJ	REFORMATORY	BR	0214	WILLIAMS & CLARK	CHROME		1.3	2.7	CRC	CRC	F				1
CJ	CJ	AT	EB	NJ	M/L	CNJ SOUTH	0215	RED BANK	CHATSWORTH		38.1	84.3	CRC	CRC	F				1
CJ	CJ	AT	EB	NJ	M/L	CNJ SOUTH	0215	CHATSWORTH	WINSLOW JCT		84.3	104.2	CRC	CRC	F				1
CJ	CJ	EA	PH	NJ	M/L	CNJ SOUTH	0215	WINSLOW JCT	NORMA		104.2	123.9	CRC	CRC	F				1
CJ	CJ	EA	PH	NJ	M/L	CNJ SOUTH	0215	WINSLOW JCT	NORMA		123.9	130.5	CRC	CRC	F				1
CJ	CJ	EA	PH	NJ	M/L	CNJ SOUTH	0215	BRIDGETON JCT	BRIDGETON JCT		130.5	132.8	CRC	CRC	F				1
CJ	CJ	AT	EB	NJ	FREEHOLD	BR SEC	0216	MATAWAN	BRIDGETON		10.9	14.1	CRCN		0			AVS	2
CJ	CJ	AT	EB	NJ	FREEHOLD	BR SEC	0216	MORGANVILLE	BRIDGETON		14.1	23.0	CRCN		0			OS	7
CJ	CJ	ES	CJ	NJ	SEASHORE	BR	0217	MORGANVILLE	FREEHOLD		5.2	7.2	CJE		0			OS	6
CJ	CJ	AT	EB	NJ	SEASHORE	BR SEC	0217	NATCO	NATCO		7.2	10.9	CRC		0				1
CJ	CJ	AT	EB	NJ	INDUSTRIAL	BR	0218	E LONG BRANCH	MATAWAN		0.0	1.2	CRC	CRC	F				1
CJ	CJ	AT	EB	NJ	TOMS RVR/B	GATBR	0219	LAKEHURST	BRANCHPORT		39.8	47.4	CRC	CRC	F				1
CJ	CJ	ES	CJ	NJ	TOMS RVR/B	GATBR	0219	TOMS RIVER	TOMS RIVER		47.4	51.5	CJE		0			AVS	4
CJ	CJ	AT	EB	NJ	TOMS RVR/B	GATBR	0219	PINEMALD	FORKED RIVER		55.6	57.8	JCPL		0				7
CJ	CJ	AT	EB	NJ	JCP&L	TRK	0219	FORKED RIVER	FORKED RIVER		55.6	57.8	JCPL		0				7
CJ	CJ	EA	PH	NJ	DEERFIELD	BR	0220	FORKED RIVER	OYSTER CREEK		0.0	3.8	CRC	CRC	F				1
CJ	CJ	EA	PH	NJ	DEERFIELD	BR	0220	BRIDGETON JCT	DEERFIELD		0.0	18.1	CRC	CRC	F				1
CJ	CJ	EA	PH	NJ	CUMB & MAUR	BR	0221	BRIDGETON JCT	MAURICETOWN		0.0	29.0	CRC	CRC	FP	NJ			1
CJ	CJ	AT	EB	NJ	NY & LB	RR	0222	BRIDGETON JCT	BRADLEY BEACH		0.0	29.0	CRC	CRC	FP	NJ			1
CJ	CJ	AT	EB	NJ	NY & LB	RR	0222	BRADLEY BEACH	BAY HEAD JCT		29.0	38.0	CRCN		P			AVS	2

CONRAIL ACTIVATION PLAN

DISPOSITION OF EXISTING LINES

JURISDICTION	PRV	RD DV	RG DV	ST	LINE	NAME	CODE	FROM	TO	MILE FROM	POST TO	OWN	OPN CNT	CR OP	PSGR OPNS	TRackage RIGHTS	SPC CND C
CJ	CJ	AT	ER	NJ	MONMOUTH PRK SEC	0223	OCEANPORT	MONMOUTH PARK	0.0	0.7	CRC	CRC	FP	NJ			1
CJ	CJ	AT	EB	PA	L&NE	0224A	BETHLEHEM JCT	UHLERS	0.0	23.0	CRC	CRC	F				1
CJ	CJ	ES	CJ	PA	L&NE	0224A	UHLERS	MARTINS CREEK	23.0	28.7	CJE	CJE	0				OS
CJ	CJ	ES	CJ	PA	L&NE	0224R	HAUTO	HAUTO TUNNEL	0.0	1.9	CJE	CJE	0				OS
CJ	CJ	AT	EB	PA	L&NE	0224R	HAUTO TUNNEL	TAMAQUA	1.9	7.3	CRC	CRC	F				1
CJ	CJ	AT	EB	PA	L&NE	0224C	ALLEN JCT	ALLENTOWN	0.0	4.8	CRC	CRC	F				1
CJ	CJ	AT	EB	PA	L&NE	0224D	CRANE JCT	SCHOENERSVILLE	0.0	4.8	CRC	CRC	F				1
CJ	CJ	AT	EB	PA	L&NE	0224F	N CATAWAQUA	FRONT ST	0.0	1.0	CRC	CRC	F				1
CJ	CJ	AT	EB	PA	L&NE	0224F	ALLENTOWN BR	UNION BLVD	0.0	1.1	CRC	CRC	F				1
CJ	CJ	AT	EB	PA	RITTERSVLE SPR	0225	SOUTH AMBOY	NEW BRUNSWICK	0.0	12.3	CRC	CRC	F				1
CJ	CJ	AT	EB	NJ	PARITAN RIVER	0225A	SOUTH RIVER	WRIGHTS	0.0	1.0	CRC	CRC	F				1
CJ	CJ	AT	EB	NJ	PARITAN RIVER	0225R	SAYREVILLE JCT	SAYREVILLE	0.0	2.0	CRC	CRC	F				1
CJ	CJ	AT	EB	NJ	LAFAYETTE BR	0226	WEST SIDE BR	GRAND AV	0.0	0.7	CRC	CRC	F				1
CJ	CJ	AT	EB	NJ	CONST HOOK BR	0227	BAYONNE	END OF TRACK	0.0	0.8	CRC	CRC	F				1
CJ	CJ	AT	EB	NJ	AVE A BR	0228	BAYONNE	TEXACO	0.0	0.6	CRC	CRC	F				1
CJ	CJ	AT	EB	NJ	PORT AVE BR	0229	ELIZABETHPORT	SECOND ST	0.0	2.1	CRC	CRC	F				1
CJ	CJ	AT	EB	NJ	BROADWAY BR	0230	SPRING	NEW POINT RD	0.0	0.6	CRC	CRC	F				1
CJ	CJ	ES	CJ	NJ	BROADWAY BR	0230	NEW POINT RD	ELIZABETH	0.6	1.1	CJE	CJE	0				OS
CJ	CJ	AT	EB	NJ	MIDDLE BROOK BR	0231	BROOK	QUARRY	0.0	2.0	CRC	CRC	F				1
CJ	CJ	AT	EB	NJ	MFG BR	0232	BRILLS	LISTER AV	0.0	1.1	CRC	CRC	F				1
CJ	CJ	AT	EB	NJ	MFG EXT BR	0233	LOCKWOOD	P S E G	0.0	0.9	CRC	CRC	F				1
CJ	CJ	AT	EB	NJ	THIRD BR	0234	BAYWAY	WOOD AV	0.0	1.7	CRC	CRC	F				1
CJ	CJ	AT	EB	NJ	RAYWAY BR	0235	BAYWAY	FRONT ST	0.0	0.8	CRC	CRC	F				1
CJ	CJ	AT	EB	NJ	SOUND SHORE BR	0236	TREMLEY	GRASSELLI	0.0	1.0	CRC	CRC	F				1
CJ	CJ	AT	EB	NJ	LINDEN BR	0237	RAHWAY	ROUTE 1	0.0	1.9	CRC	CRC	F				1
CJ	CJ	AT	EB	NJ	REFORM BR SEC	0238	TK 4	PHILA QUARTZ	0.0	2.3	CRC	CRC	F				1
CJ	CJ	AT	ER	NJ	SOUND SHORE BR	0239	CARTERET	END OF TRACK	0.0	0.4	CRC	CRC	F				1
CJ	CJ	AT	ER	NJ	MEADOWS BR	0240	NORTH AV	ALLIED	0.0	0.4	CRC	CRC	F				1
CJ	CJ	AT	ER	NJ	RACE TRK	0241	ELIZABETHPORT	NORTH AV	0.0	1.4	CRC	CRC	F				1
CJ	CJ	AT	ER	NJ	INGHAM AVE BR	0242	BAYONNE	INGHAM	0.0	0.9	CRC	CRC	F				1
CJ	CJ	AT	ER	NJ	JC YARD	0243	JERSEY CITY	BURMA RD	0.0	1.2	CRC	CRC	F				1
CJ	CJ	AT	ER	NJ	PORT NEWARK	0244	BRILLS	AV P	0.0	0.5	CRC	CRC	F				1
CJ	CJ	AT	ER	NJ	RAR N SHORE BR	0245	PERTH AMBOY	WHEELING	0.0	1.7	CRC	CRC	F				1
CJ	CJ	AT	ER	NJ	INGERSOLL BR	0246	RAND	PHILLIPSBURG	0.0	0.7	CRC	CRC	F				1
CJ	CJ	AT	ER	NJ	J MANVILLE BR	0247	FINDERNE	MANVILLE	0.0	0.8	CRC	CRC	F				1
CJ	CJ	AT	ER	NJ	GOLDENBURG SDG	0248	POINT OF ROCKS	CARTERET AV	0.0	0.3	CRC	CRC	F				1
CJ	CJ	AT	ER	NJ	PORT NEWARK	0249	BRILLS	DOREMUS AV	0.0	0.7	CRC	CRC	F				1
CJ	CJ	AT	ER	NJ	BAY SHORE BR	0250	NWK & NY BR	BAY SHORE	0.0	0.2	CRC	CRC	F				1
CJ	CJ	AT	ER	NJ	BAY SHORE CONN	0251	BAY SHORE	AV P	0.0	0.3	CRC	CRC	F				1

"DISPOSITION OF EXISTING LINES"  
(Pre-Conveyance Jurisdiction)

Lehigh & Hudson River R. R.  
Penn-Rdg Seashore Lines

CONRAIL ACTIVATION PLAN

3/24/76

DISPOSITION OF EXISTING LINES

JURISDICTION		RD DV		RG	DV	ST	---LINE---		---STATIONS---		MILE POST		OWN	OPN	CR	PSGR	TRACKAGE	SPC
PRV	CRC						NAME	CODE	FROM	TO	FROM	TO		CNT	OP	OPNS	RIGHTS	CND
LH	LH	AT	LD			NY	M/L L&HR	0101	MAYBROOK	NY/NJ ST LN	0.0	23.8	CRC		F			
LH	LH	AT	LD			NJ	M/L L&HR	0101	NY/NJ ST LN	BELVIDERE	23.8	72.0	CRC		F			
LH	LH	AT	LD			PA	WARREN SEC	0102	EASTON	PA/NJ ST LN	0.0	0.2	CRC		F			
LH	LH	AT	LD			NJ	WARREN SEC	0102	PA/NJ ST LN	PHILLIPSBURG	0.2	0.4	CRC		F			
LH	LH	AT	LD			NJ	L&HR YARD	0103	PHILLIPSBURG	PHILLIPSBURG	0.0	1.4	CRC		F			
LH	LH	AT	LD			NY	EL CONN	0104	GREYCOURT	GREYCOURT EL	0.0	0.8	CRC		F			
LH	LH	AT	LD			NJ	ZINC CO SDG	0105	FRANKLIN	OGDENBURG	0.0	2.9	CRC		F			

3/24/76

CONRAIL ACTIVATION PLAN

DISPOSITION OF EXISTING LINES

JURISDICTION	PRV	RD	DV	RG	DV	ST	NAME	LINE	CODE	FROM	TO	MILE FROM	MILE TO	OWN	OPN CNT	CR OP	PSGR OPNS	TRACKAGE RIGHTS	SPC CND
SL	SL	ES	SL	ES	SL	NJ	M/L ATLANTIC CTY		9901	CAMDEN	HADDONFIELD	0.0	6.1	SLE	0	0			AB
SL	SL	ES	SL	ES	SL	NJ	M/L ATLANTIC CTY		9901	HADDONFIELD	LINDENWALD	6.1	11.1	SLE	0	0			AB
SL	SL	EA	PH	EA	PH	NJ	M/L ATLANTIC CTY		9901	LINDENWALD	LUCASTON	11.1	13.6	CRCN	0	0			AVS
SL	SL	EA	PH	EA	PH	NJ	M/L ATLANTIC CTY		9901	LUCASTON	ATLANTIC CITY	13.6	58.0	CRC	CRC	FP	NJ		AVS
SL	SL	EA	PH	EA	PH	NJ	M/L ATLANTIC CTY		9901	ATLANTIC CITY	END OF TRACK	58.0	59.0	CRC	CRC	F			1
SL	SL	EA	PH	EA	PH	NJ	MILLVILLE BR		9902	BULSON ST	CAMDEN BROWN	1.0	2.5	CRC	CRC	F			1
SL	SL	EA	PH	EA	PH	NJ	CLEMENTON BR		9902	CAMDEN BROWN	WINSLOW	2.5	26.1	CRC	CRC	F			1
SL	SL	EA	PH	EA	PH	NJ	CAPE MAY BR		9903	CAPE MAY	CAPE MAY PT	26.1	80.0	CRC	CRC	FP	NJ		1
SL	SL	EA	PH	EA	PH	NJ	YARD TRK		9904	CAPE MAY	CAPE MAY PT	0.0	2.0	CRC	CRC	F			1
SL	SL	EA	PH	EA	PH	NJ	WILDWOOD RR		9905	WILDWOOD JCT	WILDWOOD JCT	72.5	72.9	CRC	CRC	F			1
SL	SL	EA	PH	EA	PH	NJ	WILDWOOD RR		9905	WILDWOOD JCT	WILDWOOD	72.9	76.5	SLE	0	0			OS
SL	SL	EA	PH	EA	PH	NJ	OCEAN CITY BR		9906	TUCKAHOE	PALERMO	53.1	59.6	CRC	CRC	FP	NJ		6
SL	SL	EA	PH	EA	PH	NJ	OCEAN CITY BR		9906	PALERMO	OCEAN CTY 10ST	59.6	66.4	CRCN	0	0			AVS
SL	SL	ES	SL	ES	SL	NJ	P VILLE SEC		9907	MCKEE CITY	PLEASANTVILLE	53.1	56.9	SLE	0	0			AVS
SL	SL	EA	PH	EA	PH	NJ	P VILLE SEC		9907	PLEASANTVILLE	MAIN LINE	56.9	62.2	CRC	CRC	F			AVS
SL	SL	EA	PH	EA	PH	NJ	LINWOOD SEC		9908	PLEASANTVILLE	LINWOOD	0.0	3.8	CRC	CRC	F			1
SL	SL	EA	PH	EA	PH	NJ	LINWOOD SEC		9908	LINWOOD	SOMERS POINT	3.8	6.0	SLE	0	0			AB
SL	SL	EA	PH	EA	PH	NJ	MILLVILLE BR		9909	PAVONIA	CAMDEN BROWN	0.7	2.5	CRC	CRC	F			1
SL	SL	EA	PH	EA	PH	NJ	MILLVILLE BR		9909	CAMDEN BROWN	MANUMUSKIN	2.5	48.1	CRC	CRC	F			1
SL	SL	EA	PH	EA	PH	NJ	GLENLOCH SEC		9911	E GLOUCESTER	GLENLORA	3.9	9.5	CRC	CRC	F			1
SL	SL	EA	PH	EA	PH	NJ	PENNS GROVE BR		9912	WOODBURY W END	PENNS GR DEL RV	8.8	30.1	CRC	CRC	F			1
SL	SL	EA	PH	EA	PH	NJ	WATER POINT SEC		9913	PENNS GR WALK AV	DEEP WATER	29.8	32.4	CRC	CRC	F			1
SL	SL	EA	PH	EA	PH	NJ	SALEM SEC		9914	WOODBURY	SALEM	8.8	37.2	CRC	CRC	F			1
SL	SL	EA	PH	EA	PH	NJ	BRIDGETON SEC		9915	GLASSBORO	BRIDGETON	17.8	38.5	CRC	CRC	F			1
SL	SL	EA	PH	EA	PH	NJ	YARD TRK		9916	GLASSBORO	GLASSBORO	18.3	19.3	CRC	CRC	F			1
SL	SL	EA	PH	EA	PH	NJ	LFESBURG SEC		9917	MANUMUSKIN JCT	LEESBURG	46.4	51.5	CRC	CRC	F			1
SL	SL	EA	PH	EA	PH	NJ	B LEYS POINT THK		9918	BEESELEYS POINT	BEESELEYS POINT	0.0	2.0	CRC	CRC	F			1
SL	SL	EA	PH	EA	PH	NJ	SHELL SDG		9919	PAULSBORO	SHELL SIDING	0.0	1.0	CRC	CRC	F			1
SL	SL	EA	PH	EA	PH	NJ	PAULSBORO BRCH		9920	PAULSBORO	PAULSBORO	0.0	0.5	CRC	CRC	F			1

F

"DISPOSITION OF EXISTING LINES"  
(Pre-Conveyance Jurisdiction)

Penn Central  
Northeast Corridor Reg.

CONRAIL ACTIVATION PLAN  
DISPOSITION OF EXISTING LINES

JURISDICTION	PRV	RD DV	RG DV	ST	NAME	LINE	CODE	FROM	TO	MILE POST	OWN	OPN CNT	CR OP	PSGR OPNS	TRACKAGE RIGHTS	SPC C
NC CH	EA CH	EA CH	EA CH	PA	M/L N Y WASH		1201	DARBY DP	PA/DE ST LN	6.3	CRCA	CRC	FP	AM ST		7
NC CH	EA CH	EA CH	EA CH	DE	M/L N Y WASH		1201	PA/DE ST LN	WILM WEST YD	18.2	CRCA	CRC	FP	AM ST		7
NC CH	EA CH	EA CH	EA CH	DE	M/L N Y WASH		1201	WILM WEST YD	DE/MD ST LN	28.2	CRCA	CRC	FP	AM ST		7
NC CH	EA CH	EA CH	EA CH	MD	M/L N Y WASH		1201	DL/MD ST LN	BAY	41.4	CRCA	CRC	FP	AM MF		7
NC CH	EA CH	EA CH	EA CH	MD	M/L N Y WASH		1201	BAY	MD/DC ST LN	92.0	CRCA	CRC	FP	AM MF		7
NC CH	EA CH	EA CH	EA CH	DC	M/L N Y WASH		1201	MD/DC ST LN	WASHINGTON	131.4	CRCA	CRC	FP	AM MF		7
NC CH	EA CH	EA CH	EA CH	DC	M/L LANDVRPOT YD		1211	LANDOVER	MD/DC ST LN	128.8	CRCA	CRC	F			1
NC CH	EA CH	EA CH	EA CH	DC	M/L LANDVRPOT YD		1211	MD/DC ST LN	ANACOSTIA	131.1	CRC	CRC	F			1
NC CH	EA CH	EA CH	EA CH	DC	M/L LANDVRPOT YD		1211	ANACOSTIA	VIRGINIA	134.2	CRC	CRC	F		B&O	1
NC CH	EA CH	EA CH	EA CH	DC	M/L LANDVRPOT YD		1211	VIRGINIA	DC/VA ST LN	136.7	CRC	CRC	FP	AM	B&O	1
NC CH	EA CH	EA CH	EA CH	VA	M/L LANDVRPOT YD		1211	DC/VA ST LN	LONG BRIDGE DP	138.5	CRC	CRC	FP	AM	B&O	1
NC CH	EA CH	EA CH	EA CH	DE	DELMARVA BK		122A	PORTER	SEAFORD	14.4	CRC	CRC	F			1
NC CH	EA CH	EA CH	EA CH	DE	SEAFORD SEC		122B	SEAFORD	DE/MD ST LN	84.1	CRC	CRC	F			1
NC CH	EA CH	EA CH	EA CH	MD	POCOMOKE SEC		122C	DE/MD ST LN	POCOMOKE	0.0	CRC	CRC	F			1
NC CH	ES PC	ES PC	ES PC	MD	POCOMOKE SEC		122C	POCOMOKE	MD/VA ST LN	31.5	PCE	CRC	0			4
NC CH	ES PC	ES PC	ES PC	VA	POCOMOKE SEC		122C	MD/VA ST LN	CAPE CHARLES	35.8	PCE	CRC	0			4
NC CH	EA CH	EA CH	EA CH	DE	SHELLPOT BK		1221	BELL	RAGAN	0.0	CRC	CRC	F			1
NC CH	EA CH	EA CH	EA CH	MD	PORT RD BK		1222	PERRYVILLE	MD/PA ST LN	0.3	CRC	CRC	F	AM		1
NC CH	EA CH	EA CH	EA CH	PA	PORT RD BK		1222	MD/PA ST LN	CRESWELL DP	14.8	CRC	CRC	FP	AM		1
NC CH	EA CH	EA CH	EA CH	DE	DELMARVA BK		1223	DAVIS	PORTER	0.0	CRC	CRC	F			1
NC CH	EA CH	EA CH	EA CH	MD	NO CENTRAL BK		1224	CALVERT	COCKEYSVILLE	0.0	CRC	CRC	F	MF		1
NC CH	ES PC	ES PC	ES PC	MD	NO CENTRAL BK		1224	COCKEYSVILLE	MD/PA ST LN	15.4	PCE	CRC	0			6
NC CH	EA CH	EA CH	EA CH	MD	POPE'S CREEK SEC		1225	POWIE	WOODZELL	0.0	CRC	CRC	F			1
NC CH	ES PC	ES PC	ES PC	MD	POPE'S CREEK SEC		1225	WOODZELL	POPE'S CREEK	46.0	PCE	CRC	0			6
NC CH	EA CH	EA CH	EA CH	MD	HERBERT SEC		1226	BRANDYWINE	HERBERT	0.0	USA	CRC	F		CRC	7
NC CH	EA CH	EA CH	EA CH	MD	HERBERT SEC		1226	HERBERT	CHALK POINT	0.0	CRC	CRC	F			1
NC CH	EA CH	EA CH	EA CH	MD	CHALK PT IND TRK		1227	BRIDGE	PORTER	0.0	CRC	CRC	F	ST		1
NC CH	EA CH	EA CH	EA CH	DE	NEW CASTLE SEC		1228	WEST YD	BANK	0.0	CRC	CRC	F			1
NC CH	EA CH	EA CH	EA CH	DE	W WILMINGTON BK		1228A	WEST YD	BANK	0.0	CRC	CRC	F			6
NC CH	ES PC	ES PC	ES PC	DE	N CASTLE IND TRK		1229	BANK	FARNHURST	2.1	PCE	CRC	0			1
NC CH	EA CH	EA CH	EA CH	DE	N CASTLE IND TRK		1229	FARNHURST	N CASTLE-TASKER	4.1	CRC	CRC	F			1
NC CH	EA CH	EA CH	EA CH	DE	N CASTLE IND TRK		1230	PORTER	REYBOLD	6.6	CRC	CRC	F			1
NC CH	ES PC	ES PC	ES PC	DE	NADC RUNNING TRK		1231	TOWNSEND	DE/MD ST LN	0.0	PCE	CRC	0			6
NC CH	ES PC	ES PC	ES PC	MD	CFNTERVILLE SEC		1231	DE/MD ST LN	CENTERVILLE	5.2	PCE	CRC	0			1
NC CH	ES PC	ES PC	ES PC	MD	CHESTEROWN SEC		1232	MASSEY	MASSEY	0.0	PCE	CRC	0			4
NC CH	ES PC	ES PC	ES PC	MD	CHESTEROWN SEC		1232	MASSEY	CHESTERTOWN	0.5	PCE	CRC	0			4
NC CH	ES PC	ES PC	ES PC	DE	OXFORD SEC		1233	CLAYTON	DE/MD ST LN	0.0	PCE	CRC	0			4
NC CH	ES PC	ES PC	ES PC	MD	OXFORD SEC		1233	DE/MD ST LN	EASTON	13.7	PCE	CRC	0			6
NC CH	ES PC	ES PC	ES PC	MD	OXFORD SEC		1233	EASTON	EASTON	44.0	PCE	CRC	0			1
NC CH	OT DP	OT DP	OT DP	MD	MCDANIEL RT		1234	EASTON	MCDANIEL	0.0	PCE	CRC	0			4
NC CH	ES PC	ES PC	ES PC	MD	MCDANIEL RT		1234	MCDANIEL	MCDANIEL	12.0	DPL	CRC	?			7
NC CH	EA CH	EA CH	EA CH	DE	Dm & V SEC		1235	HARRINGTON	GEORGETOWN	0.0	CRC	CRC	F			6
NC CH	EA CH	EA CH	EA CH	DE	SNOW HILL SEC		1236	GEORGETOWN	DE/MD ST LN	0.0	CRC	CRC	F			1
NC CH	EA CH	EA CH	EA CH	MD	SNOW HILL SEC		1236	DE/MD ST LN	SNOW HILL	19.2	CRC	CRC	F			1
NC CH	ES PC	ES PC	ES PC	DE	REHOBOTH RT		1237	LEWES	LEWES BEACH	0.0	PCE	CRC	0			4

CONRAIL ACTIVATION PLAN

3/24/76

DISPOSITION OF EXISTING LINES

PAGE NC-CH 1-8

JURISDICTION	PRV	RD	DV	RG	DV	ST	NAME	CODE	FROM	TO	MILE POST	OWN	OPN	CR	PSGR	TRACKAGE	SPC
											FROM	TO	CNT	OP	OPNS	RIGHTS	CND
NC	CH	ES	PC	DE	REHOBOTH R T	1237	GEORGETOWN		LEWES		23.9	PCE	0				AVS
NC	CH	ES	PC	DE	REHOBOTH R T	1237	LEWES		REHOBOTH		38.0	PCE	0				AB
NC	CH	EA	CH	DE	MILTON TRK	1238	ELLENDALE		MILTON		0.0	CRC	CRC	F			
NC	CH	ES	PC	MD	VIENNA RUNNING	1239	PRESTON		HURLOCK		10.0	PCE	0				AVS
NC	CH	ES	PC	MD	VIENNA RUNNING	1239	HURLOCK		VIENNA		17.0	PCE	0				AVS
NC	CH	EA	CH	MD	MARDELLA TRK	1239	HEBRON		SALISBURY		35.2	PCE	0				AVS
NC	CH	EA	CH	MD	WILLARDS TRK	1239	SALISBURY		PERDUE SIDING		40.8	PCE	0				OS
NC	CH	ES	PC	MD	WILLARDS TRK	1239	PERDUE SIDING		PARSONSBURG		45.7	PCE	0				AB
NC	CH	ES	PC	MD	WILLARDS TRK	1239	PARSONSBURG		PITTSVILLE		49.2	PCE	0				
NC	CH	EA	CH	MD	OCEAN CITY TRK	1239	BERLIN		BERLIN		64.0	CRC	CRC	F			
NC	CH	OT	HR	MD	OCEAN CITY TRK	1239	BERLIN		W OCEAN CITY		65.2	HRI	0				
NC	CH	EA	CH	DE	CAMBRIDGE SEC	1240	SEAFORD		GEN MILLS		0.0	CRC	CRC	F			
NC	CH	ES	PC	DE	CAMBRIDGE SEC	1240	GEN MILLS		DE/MD ST LN		2.3	PCE	0				AVS
NC	CH	ES	PC	MD	CAMBRIDGE SEC	1240	DE/MD ST LN		CAMBRIDGE		5.7	PCE	0				AVS
NC	CH	ES	PC	MD	DENTON R T	1241	QUEEN ANNE		DENTON		0.0	PCE	0				AVS
NC	CH	EA	CH	MD	CRISFIELD SEC	1242	KINGS CREEK		KINGS CREEK		0.0	CRC	CRC	F			
NC	CH	ES	PC	MD	CRISFIELD SEC	1242	KINGS CREEK		CRISFIELD		1.2	PCE	0				AVS
NC	CH	ES	PC	VA	KIPTOPEKE BR	1243	CAPE CHARLES		KIPTOPEKE		0.0	PCE	0				AB
NC	CH	ES	PC	MD	QUEENSTOWN TRK	1244	QUEEN ANNE		QUEENSTOWN		0.0	PCE	0				AVS
NC	CH	EA	CH	PA	CHESTER CRK SEC	1245	LAMOKIN		UPLAND		0.0	CRC	CRC	F			OS
NC	CH	EA	CH	PA	CHESTER CRK SEC	1245	LAMOKIN		UPLAND		0.5	PCE	0				
NC	CH	EA	CH	PA	CHESTR PHILA TRK	1246	ISLAND ROAD		CHESTER		0.0	CRC	CRC	F			
NC	CH	EA	CH	PA	CHESTRPHILACONN	1247	BALDWIN		CHESTER&PHILA BR		0.0	CRC	CRC	F			
NC	CH	ES	PC	PA	LAMOKIN R T	1248	LAMOKIN		SO CHESTER BR		0.0	PCE	0				AB
NC	CH	EA	CH	PA	LINWOOD TRK	1249	HOOK		SO CHESTER BR		0.0	CRC	CRC	F			
NC	CH	EA	CH	PA	S CHESTER TRK	1250	CLAYMONT BR		LAMOKIN RUN TRK		0.0	CRC	CRC	F			
NC	CH	EA	CH	PA	CLAYMONT TRK	1251	SO CHESTER BR		END		0.0	CRC	CRC	F			
NC	CH	EA	CH	DE	EDGEMOOR TRK	1252	SHELLPOT BR		END		0.0	CRC	CRC	F			
NC	CH	ES	PC	PA	OCTORARO SEC	1253	WAWA		PA/MD ST LN		18.0	PCE	0				OS
NC	CH	ES	PC	MD	OCTORARO SEC	1253	PA/MD ST LN		COLORA		54.2	PCE	0				OS
NC	CH	ES	PC	MD	OCTORARO SEC	1253	COLORA		COLORA		59.7	PCE	0				AB
NC	CH	EA	CH	MD	PERRYVILLE TRK	1254	MINNICK		ROCK		59.9	PCE	0				AB
NC	CH	EA	CH	MD	HAVR D GRACE TRK	1255	OAK		MILL CREEK		0.0	CRC	CRC	F			
NC	CH	EA	CH	MD	POMEROY TRK	1256	OAK		JUNIATA ST		0.0	CRC	CRC	F			
NC	CH	EA	CH	MD	PRESIDENT ST TRK	1257	DAVIS		NEWARK CENTER		0.0	CRC	CRC	F			
NC	CH	EA	CH	MD	CLAREMONT R T	1258	BAY VIEW		PRESIDENT ST		0.0	CRC	CRC	F			
NC	CH	EA	CH	MD	SPARROWS PT TRK	1259	BAY VIEW		STOCK YARD		0.0	CRC	CRC	F			
NC	CH	EA	CH	MD	BEAR CREEK TRK	1260	MONUMENT ST		SPARROWS POINT		0.0	CRC	CRC	F			
NC	CH	EA	CH	MD	FORT MEADE TRK	1261	ODENTON		SOLLERS		0.0	CRC	CRC	F			
NC	CH	EA	CH	VA	ROSSLYN CONN TRK	1262	RO-LONG-BRDG		FORT MEADE		0.0	CRC	CRC	F			
NC	CH	EA	CH	DE	BRANDYWINE TRK	1263	EDGE MOOR		ROSSLYN		0.0	CRC	CRC	F			
NC	CH	ES	PC	VA	LITTLE CREEK TRK	1264	NORFOLK		KENTMERE		0.0	CRC	CRC	F			
NC	CH	ES	PC	VA	LITTLE CREEK TRK	1264	CAMDEN HTS		NORTH JCT		0.0	PCE	0				AVS
NC	CH	ES	PC	VA	LITTLE CREEK TRK	1264	CAMDEN HTS		LITTLE CREEK		4.2	PCE	0				AVS

CONRAIL ACTIVATION PLAN

3/24/76

DISPOSITION OF EXISTING LINES

JURISDICTION	RD	DV	RG	DV	ST	NAME	CODE	FROM	TO	MILE FROM	MILE TO	OWN	OPN CNT	CR OP	PSGR OPNS	TRACKAGE RIGHTS	SPC CND
NC	CH	ES	PC	DE	SMYRNA TRK	1265	CLAYTON		SMYRNA	0.0	1.3	PCE		0			AVS
NC	CH	EA	CH	MD	MORGANTOWN SEC	1266	WOODZELL		MORGANTOWN	0.0	5.4	PEPC	CRC	F		CRC	
NC	CH	EA	CH	MD	MILL STREET TRK	1267	SALISBURY		MILL ST	0.0	0.6	CRC	CRC	F			
NC	CH	ES	PC	MD	CATONSVILLE BR	1268	LOUDON PARK		CATONSVILLE	0.0	2.0	C&L	CRC	F			AB

3/24/76

CONRAIL ACTIVATION PLAN

DISPOSITION OF EXISTING LINES

JURISDICTION		RD DV		RG DV		ST		LINE		STATIONS		MILE POST		OWN		OPN CNT		CR OP		PSGR OPNS		TRACKAGE RIGHTS		SPC C		
PRV								NAME	CODE	FROM	TO	FROM	TO													
NC	HB	EA	HB	EA	HB	PA	M/L PHILA PGH	1302	PARKESBURG DP	LANCASTER EAST	LANCASTER EAST	45.0	64.5	CRCA	CRC	P	AM							AVS	2	
NC	HB	EA	HB	EA	HB	PA	M/L PHILA PGH	1302	LANCASTER EAST	CONEWAGO	CONEWAGO	64.5	90.5	CRCA	CRC	FP	AM							AVS	2	
NC	HB	EA	HB	EA	HB	PA	M/L PHILA PGH	1302	CONEWAGO	ROY	ROY	90.5	94.5	CRCA	CRC	FP	AM							AVS	2	
NC	HB	EA	HB	EA	HB	PA	M/L PHILA PGH	1302	ROY	HARRISBURG YD	HARRISBURG YD	94.5	105.5	CRCA	CRC	FP	AM							AVS	2	
NC	HB	EA	HB	EA	HB	PA	M/L PHILA PGH	1302	HARRISBURG YD	ROCKVILLE	ROCKVILLE	105.5	109.9	CRCA	CRC	FP	AM									
NC	HB	EA	HB	EA	HB	PA	M/L PHILA PGH	1302	ROCKVILLE	BANKS DP	BANKS DP	109.9	113.3	CRCA	CRC	FP	AM									
NC	HB	EA	HB	EA	HB	PA	M/L HBG BUF	1314	ROCKVILLE	SUNBURY	SUNBURY	90.6	138.7	CRC	CRC	FP	AM						D&H			
NC	HB	EA	HB	EA	HB	PA	M/L HBG BUF	1314	SUNBURY	NORTHUMBERLAND	NORTHUMBERLAND	278.0	286.1	CRC	CRC	F							D&H			
NC	HB	EA	HB	EA	HB	PA	M/L HBG BUF	1314	NORTHUMBERLAND	SUNBURY	SUNBURY	286.1	287.5	CRC	CRC	F							D&H			
NC	HB	EA	HB	EA	HB	PA	PORT ROAD BR	1322	CRESWELL	PORT	PORT	38.2	39.7	CRC	CRC	FP	AM									
NC	HB	EA	HB	EA	HB	PA	SUSQUEHANNA BR	1323	LENOVER	PORT	SHOCKS	1.1	33.7	CRC	CRC	F										
NC	HB	EA	HB	EA	HB	PA	SUSQUEHANNA BR	1323	PORT	SHOCKS	SHOCKS	33.7	45.4	CRC	CRC	F										
NC	HB	EA	HB	EA	HB	PA	YORK HAVEN LINE	1323	SHOCKS	WAGO JCT	WAGO JCT	45.4	50.6	CRC	CRC	FP	AM									
NC	HB	ES	PC	EA	HB	PA	N CENTRAL BR	1324	MD/PA ST LN	HYDE	HYDE	35.6	54.6	PCE	CRC	F										
NC	HB	EA	HB	EA	HB	PA	N CENTRAL BR	1324	HYDE	YORK	YORK	54.6	57.2	CRC	CRC	F										
NC	HB	EA	HB	EA	HB	PA	YORK HAVEN LINE	1325	WAGO JCT	LEMOYNE	LEMOYNE	66.7	83.2	CRC	CRC	F										
NC	HB	EA	HB	EA	HB	PA	YORK HAVEN LINE	1325	WAGO JCT	DAY	DAY	83.2	85.8	CRC	CRC	F										
NC	HB	EA	HB	EA	HB	PA	YORK HAVEN LINE	1325	LEMOYNE	DAY	MARYSVILLE	85.8	90.4	CRC	CRC	F										
NC	HB	EA	HB	EA	HB	PA	YORK HAVEN LINE	1325	DAY	MARYSVILLE	MARYSVILLE	90.4	90.4	CRC	CRC	F										
NC	HB	EA	HB	EA	HB	PA	YORK HAVEN LINE	1325	BANKS	BANKS	BANKS	111.4	113.1	CRC	CRC	F										
NC	HB	EA	HB	EA	HB	PA	ENOLA BR	1326	ENOLA	MARYSVILLE	MARYSVILLE	88.8	90.4	CRC	CRC	F										
NC	HB	EA	HB	EA	HB	PA	COLUMBIA BR	1327	CORK	COLA	COLA	68.4	80.2	CRC	CRC	F										
NC	HB	EA	HB	EA	HB	PA	SUSQUEHANNA BR	1327	SHOCKS MILLS	ROYALTON	ROYALTON	87.6	98.8	CRC	CRC	F										
NC	HB	EA	HB	EA	HB	PA	M/L PHILA PGH	1328	ROYALTON	ROYALTON	ROYALTON	87.6	98.8	CRC	CRC	F										
NC	HB	EA	HB	EA	HB	PA	WILKES BARRE BR	1329	SUNBURY KASE	HARRISBURG	HARRISBURG	94.3	104.0	CRC	CRC	FP	AM									
NC	HB	EA	HB	EA	HB	PA	WILKES BARRE BR	1329	SUNBURY KASE	W/BARRE CAREY	W/BARRE CAREY	0.0	60.5	D&H	CRC	FP	AM									
NC	HB	OT	DH	EA	HB	PA	W/BARRE BR CONN	1330	SUNBURY KASE	LVRR	LVRR	60.5	62.9	D&H	CRC	F										
NC	HB	EA	HB	EA	HB	PA	CUMBERLAND VALBR	1331	SUNBURY KASE	SUNBURY BANKS	SUNBURY BANKS	0.1	1.9	D&H	CRC	F										
NC	HB	EA	HB	EA	HB	PA	CUMBERLAND VALBR	1331	HARRISBURG	LEMOYNE	LEMOYNE	0.0	1.5	CRC	CRC	F										
NC	HB	EA	HB	EA	HB	PA	CUMBERLAND VALBR	1331	LEMOYNE	PENN ROAD	PENN ROAD	0.0	1.5	CRC	CRC	F										
NC	HB	EA	HB	EA	HB	PA	CUMBERLAND VALBR	1331	LEMOYNE	PA/MD ST LN	PA/MD ST LN	1.5	41.6	CRC	CRC	F										
NC	HB	EA	HB	EA	HB	MD	CUMBERLAND VALBR	1331	PA/MD ST LN	PA/MD ST LN	PA/MD ST LN	41.6	68.2	CRC	CRC	F										
NC	HB	OT	CO	EA	HB	MD	CUMBERLAND VALBR	1331	HAGERSTOWN	HAGERSTOWN	HAGERSTOWN	68.2	74.8	CRC	CRC	F										
NC	HB	OT	CO	EA	HB	MD	WINCHESTER SEC	1331	HAGERSTOWN	MD/WV ST LN	MD/WV ST LN	74.8	82.3	CRC	CRC	F										
NC	HB	OT	CO	EA	HB	WV	WINCHESTER SEC	1331	MD/WV ST LN	MD/WV ST LN	MD/WV ST LN	82.3	106.6	CRC	CRC	F										
NC	HB	OT	CO	EA	HB	VA	WINCHESTER SEC	1331	MD/WV ST LN	WV/VA ST LN	WV/VA ST LN	82.3	106.6	CRC	CRC	F										
NC	HB	EA	HB	EA	HB	PA	FREDERICK SEC	1332	CLY	WINCHESTER	WINCHESTER	106.6	115.9	CRC	CRC	F										
NC	HB	ES	PC	EA	HB	PA	FREDERICK SEC	1332	HANOVER	HANOVER	HANOVER	0.0	33.0	CRC	CRC	F										
NC	HB	ES	PC	EA	HB	MD	FREDERICK SEC	1332	HANOVER	PA/MD ST LN	PA/MD ST LN	33.0	41.1	PCE	CRC	F										
NC	HB	ES	PC	EA	HB	MD	FREDERICK SEC	1332	PA/MD ST LN	FOUNTAIN ROCK	FOUNTAIN ROCK	41.1	65.2	PCE	CRC	F										
NC	HB	EA	HB	EA	HB	MD	FREDERICK SEC	1332	FOUNTAIN ROCK	FREDERICK	FREDERICK	65.2	69.0	PCE	CRC	F										
NC	HB	EA	HB	EA	HB	PA	NEW HOLLAND SEC	1333	HONEY BROOK	CORK	CORK	17.6	41.0	CRC	CRC	F										
NC	HB	EA	HB	EA	HB	PA	QUARRYVILLE BR	1334	LANCASTER	FAIRVIEW AVE	FAIRVIEW AVE	0.0	1.8	CRC	CRC	F										
NC	HB	ES	PC	EA	HB	PA	QUARRYVILLE BR	1334	FAIRVIEW AVE	QUARRYVILLE	QUARRYVILLE	1.8	13.3	PCE	CRC	F										
NC	HB	EA	HB	EA	HB	PA	QUARRYVILLE BR	1334	QUARRYVILLE	QUARRYVILLE	QUARRYVILLE	13.3	15.7	CRC	CRC	F										
NC	HB	EA	HB	EA	HB	PA	QUARRYVILLE BR	1334	QUARRYVILLE	QUARRYVILLE	QUARRYVILLE	13.3	15.7	CRC	CRC	F										
NC	HB	EA	HB	EA	HB	PA	LEBANON SEC	1335	CONEWAGO	CONEWAGO	CONEWAGO	0.0	1.0	CRC	CRC	F										
NC	HB	ES	PC	EA	HB	PA	LEBANON SEC	1335	CONEWAGO	CONEWAGO	CONEWAGO	0.0	1.0	CRC	CRC	F										
NC	HB	ES	PC	EA	HB	PA	LEBANON SEC	1335	CONEWAGO	CORNWALL	CORNWALL	1.0	16.1	PCE	CRC	F										
NC	HB	ES	PC	EA	HB	PA	LEBANON SEC	1335	CORNWALL	LEBANON	LEBANON	16.1	16.8	PCE	CRC	F										

OS  
D&H N&W  
D&H  
D&H N&W  
CRC  
CRC  
WM  
WM  
M&P  
AVS 4  
AVS 4  
OS 6  
OS 6  
OS 6  
OS 6  
OS 6  
OS 6  
AVS 4  
AVS 4





CONRAIL ACTIVATION PLAN

3/24/76

DISPOSITION OF EXISTING LINES

JURISDICTION	PRV	RD DV	RG DV	ST	NAME	CODE	FROM	TO	MILE FROM	MILE TO	OWN	OPN CNT	CR OP	PSGR OPNS	TRACKAGE RIGHTS	SPC CND
NC NJ	AT NJ	AT NJ	AT NJ	NJ	HAR SN E NWK CON	1438	HARRISON	SUSSEX ST	0.0	0.6	CRC	CRC	F			1
NC NJ	AT NJ	AT NJ	AT NJ	NJ	W NEWARK BR	1439	HUNTER	END	0.0	1.7	CRC	CRC	F			1
NC NJ	AT NJ	AT NJ	AT NJ	NJ	HUDSON ST BR	1440	JERSEY CITY	JERSEY CITY	0.0	1.3	CRC	CRC	F			1
NC NJ	AT NJ	AT NJ	AT NJ	NJ	SUSQUEHANNA C BR	1441	JERSEY CITY	CROXTON YD	0.0	2.0	CRC	CRC	F			1
NC NJ	AT NJ	AT NJ	AT NJ	NJ	MILLHAM BR	1455	MILLHAM	COAL PORT YD	0.0	2.1	CRC	CRC	F			1
NC NJ	AT NJ	AT NJ	AT NJ	NJ	ENTERPRISE BR	1456	TRENTON	COAL PORT YD	0.0	4.1	CRC	CRC	F			1
NC NJ	AT NJ	AT NJ	AT NJ	NJ	SO TRENTON BR	1457	BEL DEL BR	BORDENTOWN BR	0.0	1.0	CRC	CRC	F			1
NC NJ	AT NJ	AT NJ	AT NJ	NJ	MARTINS CREEK BR	1459	CR	MARTINS CREEK	0.0	0.3	CRC	CRC	F			1
NC NJ	AT NJ	AT NJ	AT NJ	PA	ROXBURG BR	1460	ROXBURG	PP&L	0.0	0.2	CRC	CRC	F			1
NC NJ	AT NJ	AT NJ	AT NJ	PA	BRISTOL BR	1471	BRISTOL	BRISTOL RTE 413	0.0	2.6	CRC	CRC	F			1
NC NJ	AT NJ	AT NJ	AT NJ	NJ		1499	OAK ISLAND	KEAPNY	0.0	2.7	CRC	CRC	F			1

CONRAIL ACTIVATION PLAN

DISPOSITION OF EXISTING LINES

JURISDICTION	RD	DV	RG	DV	ST	LINE	NAME	CODE	FROM	TO	MILE POST	OWN	OPN	CNT	CR	OP	PSGR	OPNS	TRACKAGE	RIGHTS	SPC	CND
NC PH	EA	PH	EA	PH	PA	M/L N Y WASH	1101	ARSENAL	DARBY DP	2.1	6.3	CRCA	CRC	CRCA	FP	AM	ST		D&H		2	
NC PH	EA	PH	EA	PH	PA	HOLMSBRG JCT-DP	1101	HOLMSBRG JCT DP	ARSENAL	76.0	90.3	CRCA	CRC	CRCA	FP	AM	ST				2	
NC PH	EA	PH	EA	PH	PA	M/L PHILA PGH	1102	SUBURBAN STA	ZOO	0.0	2.0	CRCA	CRC	CRCA	P	AM	ST				2	
NC PH	EA	PH	EA	PH	PA	M/L PHILA PGH	1102	ZOO	PARK	2.0	43.9	CRCA	CRC	CRCA	FP	AM	ST				2	
NC PH	EA	PH	EA	PH	PA	M/L PHILA PGH	1102	PARK	PARKESBURG DP	43.9	45.0	CRCA	CRC	CRCA	P	AM	ST				2	
NC PH	EA	PH	EA	PH	PA	TRENTON BR	1121	GLENDALE	MORRIS	0.0	46.0	CRCA	CRC	CRCA	F						AVS	
NC PH	EA	PH	EA	PH	PA	P & T BR	1122	DALE	THORN	23.7	34.3	CRCA	CRC	CRCA	F						1	
NC PH	EA	PH	EA	PH	PA	SUSQUEHANNA BR	1123	PARKESBURG	LENOVER	0.0	1.1	CRCA	CRC	CRCA	F						1	
NC PH	EA	PH	EA	PH	NJ	BORDENTOWN BR	1125	CAMDEN	DELAIR	0.9	5.0	CRCA	CRC	CRCA	F						1	
NC PH	EA	PH	EA	PH	NJ	BORDENTOWN BR	1125	DELAIR	EDGEWATER PK DP	5.0	16.0	CRCA	CRC	CRCA	F						1	
NC PH	EA	PH	EA	PH	NJ	DORR&B CO BR	1127	SHORE	JERSEY	0.0	2.3	CRCA	CRC	CRCA	F						1	
NC PH	EA	PH	EA	PH	NJ	DORR&B CO BR	1127	JERSEY	HADDONFIELD	2.3	8.1	CRCA	CRC	CRCA	F						1	
NC PH	EA	PH	EA	PH	PA	CHESTNUT HILL BR	1128	NO PHILADELPHIA	QUEEN LANE	0.0	2.2	CRCA	CRC	CRCA	FP	ST					1	
NC PH	EA	PH	EA	PH	PA	CHESTNUT HILL BR	1128	QUEEN LANE	CHESTNUT HILL	2.2	6.6	CRCS	CRC	CRCS	P	ST					1	
NC PH	EA	PH	EA	PH	PA	SCHUYLKILL BR	1129	VALLEY	MANAYUNK	4.0	8.2	CRCA	CRC	CRCA	FP	ST					1	
NC PH	EA	PH	EA	PH	PA	SCHUYLKILL BR	1129	MANAYUNK	N READING	8.2	60.4	CRCA	CRC	CRCA	F						1	
NC PH	EA	PH	EA	PH	PA	SCHUYLKILL BR	1129	N READING	SCHUYLKILL HVN	60.4	90.5	PCE	CRC	CRC	0						AVS	
NC PH	ES	PC	EA	PH	PA	WEST CHESTER BR	1130	ARSENAL	WEST CHESTER	2.1	27.5	CRCA	CRC	CRCA	FP	ST					1	
NC PH	EA	PH	EA	PH	PA	SUBURBAN LINE	1132	30TH ST STA	ARSENAL	0.7	1.2	CRCS	CRC	CRCS	P	ST					2	
NC PH	EA	PH	EA	PH	PA	36TH ST CUNN	1133	PENN RIVER LINE	ZOO 38TH ST	1.5	2.5	CRCA	CRC	CRCA	P	AM	ST				2	
NC PH	EA	PH	EA	PH	PA	NFW YORK CONN	1134	34TH ST	RIVER LINE	2.1	2.8	CRCA	CRC	CRCA	P	AM	ST				2	
NC PH	EA	PH	EA	PH	PA	NY&PGH SUBWAY	1135	ZOO	ZOO 44TH ST	0.0	0.8	CRCA	CRC	CRCA	P	AM	ST				2	
NC PH	EA	PH	EA	PH	PA	JERSEY TRACK	1136	ZOO	42ND ST	0.0	0.5	CRCA	CRC	CRCA	F						1	
NC PH	EA	PH	EA	PH	PA	RELMONT BR	1137	BELMONT RDG	ZOO	0.0	1.7	CRCA	CRC	CRCA	F				D&H		1	
NC PH	EA	PH	EA	PH	PA	BERRY TRKS	1138	ZOO	ZOO	0.0	0.3	CRCA	CRC	CRCA	F				D&H		1	
NC PH	EA	PH	EA	PH	PA	ZOO RUN DOWN TRK	1139	ZOO	ZOO	1.3	2.5	CRCA	CRC	CRCA	F						1	
NC PH	EA	PH	EA	PH	PA	W PHILA ELEVATED	1140	ZOO	BRILL	0.3	4.6	CRCA	CRC	CRCA	F						1	
NC PH	EA	PH	EA	PH	PA	GRAYS FERRY BR	1142	ZOO 34TH ST	ARSENAL	0.0	2.4	CRCS	CRC	CRCS	P	ST					2	
NC PH	EA	PH	EA	PH	PA	DELAWARE EXT	1143	ARSENAL	DOCK ST	1.5	11.2	CRCA	CRC	CRCA	F						1	
NC PH	EA	PH	EA	PH	PA	GIRARD POINT BR	1144	PENROSE	GIRARD POINT	0.0	1.4	CRCA	CRC	CRCA	F						1	
NC PH	EA	PH	EA	PH	PA	60TH ST BR	1145	BRILL	FORT MIFFLIN	0.0	4.1	CRCA	CRC	CRCA	F						1	
NC PH	EA	PH	EA	PH	PA	CHESTER PHILA BR	1146	FORT MIFFLIN	ISLAND RU RDG	0.0	4.3	CRCA	CRC	CRCA	F						1	
NC PH	ES	PC	EA	PH	PA	NFW HOLLAND BR	1147	DOWNTOWN	LANCASTER AV	0.0	1.0	PCE	CRC	CRC	0						1	
NC PH	ES	PC	EA	PH	PA	POMEROY SEC	1148	PARKESBURG	DOE RUN	0.0	6.5	PCE	CRC	CRC	0						6	
NC PH	EA	PH	EA	PH	PA	COATESVILLE BR	1149	POMEROY	LYKENS STEEL CO	0.0	2.9	PCE	CRC	CRC	0						OS	
NC PH	EA	PH	EA	PH	PA	FRAZER TRK	1150	FRAZER	WEST CHESTER	23.6	24.4	CRCA	CRC	CRCA	F						AVS	
NC PH	ES	PC	EA	PH	PA	FRAZER TRK	1150	WEST CHESTER	RDG RR	0.0	0.6	CRCA	CRC	CRCA	F						7	
NC PH	EA	PH	EA	PH	PA	PFNCOYD BR	1151	WEST MANAYUNK	DEVAULT	0.0	6.0	CRCA	CRC	CRCA	F						1	
NC PH	EA	PH	EA	PH	PA	PHOENIXVILLE BR	1152	PHOENIXVILLE	DEVAULT	6.0	6.3	PCE	CRC	CRC	0						OS	
NC PH	ES	PC	EA	PH	PA	PHOENIXVILLE BR	1152	DEVAULT	DEVAULT	6.3	9.2	PCE	CRC	CRC	0						AB	
NC PH	ES	PC	EA	PH	PA	PHOENIXVILLE BR	1152	DEVAULT	MP 9.2	9.2	10.0	PCE	CRC	CRC	0						6	
NC PH	EA	PH	EA	PH	PA	PHOENIXVILLE BR	1152	MP 9.2	DALE JCT	0.0	1.0	CRCA	CRC	CRCA	F						1	
NC PH	EA	PH	EA	PH	PA	ROYERSFORD BR	1153	SPRING CITY	ROYERSFORD	0.0	1.0	CRCA	CRC	CRCA	F						1	
NC PH	ES	PC	EA	PH	PA	COURT ST BR	1154	READING	READING	0.0	0.7	PCE	CRC	CRC	0						AVS	

CONRAIL ACTIVATION PLAN

3/24/76

DISPOSITION OF EXISTING LINES

PAGE NC-PH 1-B

JURISDICTION	PRV	RD	DV	RG	DV	ST	LINE	CODE	FROM	TO	MILE FROM	MILE TO	OWN	OPN CNT	CR OP	PSGR OPNS	TRACKAGE RIGHTS	SPC CND
NC PH	EA	PH	EA	PH	PA	COURT ST BR	1154	READING	COURT ST		0.7	1.0	CRC	CRC	F			
NC PH	ES	PC	EA	PH	NJ	KINKORA BR	1161	KINKORA	LEWIS		1.0	10.8	PCE	CRC	0			AB
NC PH	EA	PH	EA	PH	NJ	PEMBERTON BR	1162	PAVONIA	MERCHANTVILLE		2.6	5.0	CRC	CRC	F			
NC PH	EA	PH	EA	PH	NJ	PEMBERTON BR	1162	MERCHANTVILLE	PEMBERTON		5.0	24.9	CRC	CRC	F			
NC PH	EA	PH	EA	PH	NJ	UNION TRANS CO	1164	LEWIS	FORT DIX		0.0	5.6	CRC	CRC	F			
NC PH	EA	PH	EA	PH	NJ	DIX RUNNING TRK	1164	PEMBERTON	LEWIS		24.9	27.8	CRC	CRC	F			
NC PH	EA	PH	EA	PH	NJ	MEDFORD BR	1165	MT HOLLY	LUMBERTON RD		0.3	1.3	CRC	CRC	F			AVS
NC PH	ES	PC	EA	PH	NJ	MEDFORD BR	1165	LUMBERTON RD	MEDFORD		1.3	6.3	PCE	CRC	0			
NC PH	EA	PH	EA	PH	NJ	PETTY ISLAND BR	1167	BORDENTOWN BR	PETTY ISLAND		0.0	2.0	CRC	CRC	F			
NC PH	EA	PH	EA	PH	NJ	PENSAUKEN BR	1169	MINSON N J	END		0.0	1.1	CRC	CRC	F			
NC PH	EA	PH	EA	PH	NJ	CONN TRK BR 1	1174	MINSON BORD BR	DRRR & B CO BR		0.0	0.3	CRC	CRC	F			
NC PH	ES	PC	EA	PH	NJ	CONN TRK BR 2	1174	MINSON BORD BR	DRRR & B CO BR		2.0	2.8	PCE	CRC	0			OS
NC PH	EA	PH	EA	PH	PA	BUSTLETON BR	1172	HOLMESBURG JCT	WELSH ROAD		0.0	3.4	CRC	CRC	F			
NC PH	EA	PH	EA	PH	PA	KENSIN-TACONY BR	1173	TRENTON AVE EL	TACONY		0.0	5.5	CRC	CRC	F			
NC PH	EA	PH	EA	PH	PA	FRANKFORD ST BR	1174	TRENTON AVE EL	TACONY-BUCKIUS		80.3	82.0	CRC	CRC	F			
NC PH	EA	PH	EA	PH	PA	TRENTON AVE ELEV	1175	FRANKFORD JCT	PORT RICH CONN		80.0	82.0	CRC	CRC	F			
NC PH	EA	PH	EA	PH	PA	TRENTON AVE ELEV	1175	PORT RICH CONN	FRANKFORD AVE		82.0	82.8	CRC	CRC	F			
NC PH	EA	PH	EA	PH	PA	COMMERCE ST BR	1176	DEL AVE BR	KENSINGTON		0.0	0.5	CRC	CRC	F			
NC PH	EA	PH	EA	PH	PA	CANAL ST BR	1177	DEL AVE BR	LLEWELLYN ST		0.0	0.5	CRC	CRC	F			
NC PH	EA	PH	EA	PH	PA	DFLAWARE AVE BR	1178	DUCK ST	PORT RICHMOND		81.9	85.6	CRC	CRC	F			
NC PH	EA	PH	EA	PH	PA	SWANSON ST BR	1179	DEL EXT	MORRIS ST		0.0	1.2	CRC	CRC	F			
NC PH	EA	PH	EA	PH	PA	WASHINGTON AV BR	1180	ARSENAL	31ST ST		0.0	1.0	CRC	CRC	F			AB
NC PH	ES	PC	EA	PH	PA	WASHINGTON AV BR	1180	31ST ST	23RD ST		1.0	1.5	PCE	CRC	0			
NC PH	EA	PH	EA	PH	PA	WASHINGTON AV BR	1180	23RD ST	DELAWARE AVE		1.5	4.2	CRC	CRC	F			
NC PH	EA	PH	EA	PH	PA	OXFORD RD BR	1181	"C" ST YARD	READING RR		0.0	3.2	CRC	CRC	F			
NC PH	ES	PC	EA	PH	PA	OXFORD RD BR	1181	READING RR	OXFORD ROAD		3.2	3.5	PCE	CRC	0			
NC PH	EA	PH	EA	PH	PA	FAIRHILL BR	1182	FAIRHILL YD	INDIANA AVE		0.0	0.8	CRC	CRC	F			
NC PH	EA	PH	EA	PH	PA	ENGLESIDE BR	1183	MAIN LINE	MASTER ST		0.0	0.3	CRC	CRC	F			
NC PH	EA	PH	EA	PH	PA	MIDVALE BR	1184	CRESTNUT HILL BR	MISSAHICKON AVE		0.0	0.3	CRC	CRC	F			
NC PH	ES	PC	EA	PH	PA	FT WASHINGTON BR	1185	ALLEN LANE	QUEEN ST		0.0	1.4	PCE	CRC	0			AVS
NC PH	EA	PH	EA	PH	PA	NEWTOWN SQ BR	1186	FERWOOD	GRASSLAND		5.6	10.5	CRC	CRC	F			
NC PH	EA	PH	EA	PH	PA	CARDINGTON BR	1187	GAPRETT RD	MILLBOURNE MILLS		6.5	8.8	CRC	CRC	F			

K

"DISPOSITION OF EXISTING LINES"  
(Pre-Conveyance Jurisdiction)

Reading Railroad

3/24/76

CONRAIL ACTIVATION PLAN

DISPOSITION OF EXISTING LINES

JURISDICTION	PRV	RD DV	RG DV	ST	LINE	NAME	CODE	FROM	TO	MILE POST	OWN	OPN	CR	PSGR	TRACKAGE	SPC
RD DV	RD DV	RD DV	RD DV	ST	---	---	---	---	---	FROM TO	---	CNT	OP	OPNS	RIGHTS	CND
RD RD	EA RE	PA	PA	PA	0301	BETHLEHEM BR	0301	WILLOW ST	TABOR JCT	0.0	CRC	CRC	F			
RD RD	EA RE	PA	PA	PA	0301	BETHLEHEM BR	0301	TABOR JCT	QUAKERTOWN	7.0	CRC	CRC	FP	ST		
RD RD	EA RE	PA	PA	PA	0301	BETHLEHEM BR	0301	QUAKERTOWN	BETHLEHEM	40.2	CRC	CRC	FP	ST		
RD RD	EA RE	PA	PA	PA	0302	BLOOMSBURG BR	0302	RUPERT	BLOOMSBURG	0.0	CRC	CRC	F			
RD RD	ES RD	PA	PA	PA	0302	BLOOMSBURG BR	0302	BLOOMSBURG	BENTON	1.6	RDE	CRC	O			AB
RD RD	EA RE	PA	PA	PA	0303	BLUE LINE CONN	0303	NICE	WAYNE	0.0	CRC	CRC	F			
RD RD	EA RE	PA	PA	PA	0304	C & F BR	0304	CATASAQUA	ALBURTIIS	0.0	CRC	CRC	F			
RD RD	EA RE	PA	PA	PA	0304	BREINIGSVILLE BR	0304	TREXLETTOWN	TREXLETTOWN	0.0	RDE	CRC	O			OS
RD RD	EA RE	PA	PA	PA	0304	CHAPMAN BR	0304	CHAPMAN	LEHIGH ECON ADV	0.0	CRC	CRC	F			
RD RD	EA RE	PA	PA	PA	0305	CATAWISSA BR	0305	BARNES	E MAHANAY JCT	103.0	CRC	CRC	F			
RD RD	ES RD	PA	PA	PA	0305	CATAWISSA BR	0305	EAST MAHANAY JCT	CATAWISSA	103.6	RDE	CRC	O			AVS 4
RD RD	ES RD	PA	PA	PA	0305	CATAWISSA BR	0305	CATAWISSA	RUPERT	145.4	RDE	CRC	O			AVS 4
RD RD	ES RD	PA	PA	PA	0305	CATAWISSA BR	0305	RUPERT	DANVILLE	147.1	RDE	CRC	O			AVS 4
RD RD	ES RD	PA	PA	PA	0305	CATAWISSA BR	0305	DANVILLE	DANVILLE	154.7	CRC	CRC	F			
RD RD	ES RD	PA	PA	PA	0305	CATAWISSA BR	0305	DANVILLE	DANVILLE	155.2	RDE	CRC	O			AVS 4
RD RD	EA RE	PA	PA	PA	0305	CATAWISSA BR	0305	MILTON	MILTON	169.0	CRC	CRC	F			
RD RD	EA RE	PA	PA	PA	0305A	CATAWISSA BR	0305A	MILTON	NEWBERRY JCT	0.0	CRC	CRC	F			
RD RD	EA RE	PA	PA	PA	0305R	DOUGAL BR	0305R	MILTON	MILTON	0.0	CRC	CRC	F			
RD RD	EA RE	PA	PA	PA	0305D	MILTON BR	0305D	MILTON BR JCT	MILTON	0.0	CRC	CRC	F			AVS 4
RD RD	EA RE	PA	PA	PA	0306	LOFTY TEAM TRK	0306	LOFTY	LOFTY	0.0	RDE	CRC	O			
RD RD	EA RE	PA	PA	PA	0306	CHESTER BR	0306	EASTWICK	60TH ST	0.0	CRC	CRC	F			
RD RD	EA RE	PA	PA	PA	0306	CHESTER BR	0306	60TH ST	PHILA AIRPORT	1.3	CRC	CRC	F			2
RD RD	EA RE	PA	PA	PA	0306	CHESTER BR	0306	PHILA AIRPORT	PHILA AIRPORT	4.9	CRC	CRC	F			1
RD RD	EA RE	PA	PA	PA	0307A	CEDAR HOLLOW BR	0307A	CEDAR HOLLOW	END OF TRACK	0.0	CRC	CRC	F			1
RD RD	EA RE	PA	PA	PA	0307R	CHESTER VAL BR	0307R	BRIDGEPORT	DOWNINGTOWN	0.0	CRC	CRC	F			1
RD RD	EA RE	PA	PA	PA	0308	CHESTNUT HILL BR	0308	WAYNE JCT	CHESTNUT HILL	5.1	CRC	CRC	P	ST		AVS 2
RD RD	EA RE	PA	PA	PA	0309	CITY BR	0309	CALLOWHILL JCT	PARK	0.4	CRC	CRC	F			
RD RD	EA RE	PA	PA	PA	0309	CITY BR	0309	PARK	FALLS	2.4	CRC	CRC	F			D&H
RD RD	EA RE	PA	PA	PA	0310	CORNWALL BR	0310	LERANON-WALL	REX	0.0	CRC	CRC	F			
RD RD	EA RE	PA	PA	PA	0311	DOYLESTOWN BR	0311	LANSDALE	FORTUNA	0.0	CRC	CRC	P	ST		AVS 2
RD RD	EA RE	PA	PA	PA	0311	DOYLESTOWN BR	0311	FORTUNA	DOYLESTOWN	1.5	CRC	CRC	P	ST		AVS 2
RD RD	EA RE	PA	PA	PA	0312	EAST PENNA BR	0312	READING PIKE	ALLENSTOWN BURN	1.1	CRC	CRC	F			
RD RD	ES RD	PA	PA	PA	0313A	FRACKVILLE BR	0313A	GRADE	FRACKVILLE	0.0	RDE	CRC	O			AVS 4
RD RD	EA RE	PA	PA	PA	0313B	SCHUYL VAL BR	0313B	MILL CREEK JCT	MIDDLEPORT	1.5	CRC	CRC	F			
RD RD	EA RE	PA	PA	PA	0313C	FRACKVILLE BR	0313C	POTTSVILLE JCT	ST CLAIR	0.0	CRC	CRC	F			
RD RD	ES RD	PA	PA	PA	0313C	FRACKVILLE BR	0313C	ST CLAIR	FRACKVILLE	4.1	RDE	CRC	O			AVS 4
RD RD	EA RE	PA	PA	PA	0314	FRANKFORD BR	0314	FRANKFORD JCT	FRANKFORD	8.1	CRC	CRC	F			
RD RD	EA RE	PA	PA	PA	0315	GETTYSBURG & HBG	0315	GETTYSBURG JCT	CARLISLE	0.0	RDE	CRC	O			OS
RD RD	ES RD	PA	PA	PA	0315	GETTYSBURG & HBG	0315	CARLISLE	CARLISLE JCT	0.8	RDE	CRC	F			1
RD RD	ES RD	PA	PA	PA	0315	GETTYSBURG & HBG	0315	CARLISLE JCT	MT HOLLY SPRINGS	6.3	CRC	CRC	F			AVS 4
RD RD	ES RD	PA	PA	PA	0315	GETTYSBURG & HBG	0315	MT HOLLY SPRINGS	GETTYSBURG EOT	7.8	RDE	CRC	O			1
RD RD	EA RE	PA	PA	PA	0316	HERNDON BR	0316	HERN	TREVORTON	0.0	RDE	CRC	F			AVS 4
RD RD	ES RD	PA	PA	PA	0316	HERNDON BR	0316	TREVORTON	DUNKELBERGERS	7.8	RDE	CRC	O			OS
RD RD	ES RD	PA	PA	PA	0317	LEBANON & TRMNT	0317	LEBANON-WALL	SUEDBURG	0.0	RDE	CRC	O			AVS 4
RD RD	EA RE	PA	PA	PA	0318A	LEBANON VAL BR	0318A	READING	OLEY	0.0	CRC	CRC	F			1

CONRAIL ACTIVATION PLAN

DISPOSITION OF EXISTING LINES

JURISDICTION	PRV	RD	DV	RG	DV	ST	LINE	NAME	CODE	FROM	TO	MILE FROM	MILE TO	OWN	OPN CNT	CR OP	PSGR OPNS	TRACKAGE RIGHTS	SPC CND
RD	RD	EA	RE	PA	PA	PA	LEBANON VAL BR	READING	0318R	READING	HARRISBURG	0.0	53.6	CRC	CRC	F			
RD	RD	EA	RE	PA	PA	PA	LITTLE SEHUYLK	CLINTON	0319	CLINTON	BARNES	78.3	103.0	CRC	CRC	F			
RD	RD	EA	RE	PA	PA	PA	LOW GRADE BRANCH	NICE	0320	NICE	NEWTOWN JCT	0.0	1.8	CRC	CRC	F			
RD	RD	EA	RE	PA	PA	PA	MAHONY & SHAMOKIN	BARNES	0321	BARNES	HERN	103.0	139.0	CRC	CRC	F			
RD	RD	ES	RD	PA	PA	PA	COLEBRKDALE INT	COLEBRKDALE JCT	0322A	COLEBRKDALE JCT	ESHBACH	0.0	12.1	RDE	CRC	F			AVS 4
RD	RD	EA	RE	PA	PA	PA	M/L RDG	FALLS	0322R	FALLS	NORRIS	5.4	18.0	CRC	CRC	F			
RD	RD	EA	RE	PA	PA	PA	M/L RDG	NORRIS	0322R	NORRIS	POTTSTOWN	18.0	40.5	CRC	CRC	FP	ST	D&H	
RD	RD	EA	RE	PA	PA	PA	M/L RDG	POTTSTOWN	0322R	POTTSTOWN	READING-PIKE	40.5	59.9	CRC	CRC	FP	ST	D&H	
RD	RD	EA	RE	PA	PA	PA	M/L RDG	READING-PIKE	0322R	READING-PIKE	READING-BELT	59.9	61.4	CRC	CRC	FP	ST	D&H	
RD	RD	EA	RE	PA	PA	PA	M/L RDG	READING-BELT	0322R	READING-BELT	POTTSTOWN	61.4	93.6	CRC	CRC	FP	ST	D&H	
RD	RD	EA	RE	PA	PA	PA	NORTH ADAMS IT	ABRAMS - MP 20.7	0322C	ABRAMS - MP 20.7	FIRST AV	0.0	1.3	CRC	CRC	F			
RD	RD	EA	RE	PA	PA	PA	MORRISVILLE BR	FAIRLESS JCT	0323	FAIRLESS JCT	MORRISVILLE	0.0	6.6	CRC	CRC	F			
RD	RD	EA	RE	PA	PA	PA	NEW HOPE BR	CARMEL	0324	CARMEL	WARMINSTER	0.0	7.3	CRC	CRC	FP	ST		
RD	RD	EA	RE	PA	PA	PA	NEW HOPE BR	WARMINSTER	0324	WARMINSTER	IVYLAND	7.3	9.4	CRC	CRC	F			
RD	RD	EA	RE	PA	PA	PA	NEWTOWN BR	CHELTENHAM JCT	0325	CHELTENHAM JCT	NEWTOWN	9.6	26.3	CRCS	CRC	P	ST		
RD	RD	EA	RE	PA	PA	PA	NEW YORK BR	JENKIN	0326	JENKIN	PA/NJ ST LN	10.8	31.4	CRC	CRC	FP	ST		
RD	RD	EA	RE	PA	PA	PA	NEW YORK BR	PA/NJ ST LN	0326	PA/NJ ST LN	WEST TRENTON	31.4	32.5	CRC	CRC	FP	ST		
RD	RD	EA	RE	PA	PA	PA	NEW YORK BR	WEST TRENTON	0326	WEST TRENTON	BOUND BROOK JCT	32.5	58.4	CRC	CRC	FP	NJ		
RD	RD	EA	RE	PA	PA	PA	N.Y. SHORT LINE	NEW YORK JCT	0327	NEW YORK JCT	CHELTENHAM JCT	6.2	9.6	CRC	CRC	FP	ST		
RD	RD	EA	RE	PA	PA	PA	N.Y. SHORT LINE	CHELTENHAM JCT	0327	CHELTENHAM JCT	NESHAMINY	9.6	19.2	CRC	CRC	F			
RD	RD	EA	RE	PA	PA	PA	NINTH STREET BR	READING TERM	0328	READING TERM	SPRING GARDEN	0.0	1.0	CRCS	CRC	P	ST		
RD	RD	EA	RE	PA	PA	PA	NINTH STREET BR	SPRING GARDEN	0328	SPRING GARDEN	TABOR JCT	0.0	7.0	CRC	CRC	P	ST		
RD	RD	EA	RE	PA	PA	PA	NORRISTOWN BR	16TH ST	0329	16TH ST	NORRISTOWN KALB	3.5	17.3	CRC	CRC	FP	ST		
RD	RD	EA	RE	PA	PA	PA	ISLAND CONN	NORRISTOWN ISL	0330	NORRISTOWN ISL	NORRISTOWN BR	0.0	0.3	CRC	CRC	F			
RD	RD	EA	RE	PA	PA	PA	NORRISTOWN BR	NORRISTOWN KALB	0330	NORRISTOWN KALB	NORRIS	0.3	1.0	CRC	CRC	FP	ST		
RD	RD	EA	RE	PA	PA	PA	OLNEY BR	ERIE	0331	ERIE	FRANKFORD JCT	0.0	2.7	CRC	CRC	F			
RD	RD	EA	RE	PA	PA	PA	PERKIOMEN BR	PERKIOMEN	0332	PERKIOMEN	OAKS	0.0	1.5	CRC	CRC	F			
RD	RD	EA	RE	PA	PA	PA	PERKIOMEN BR	OAKS	0332	OAKS	COLLEGEVILLE	1.5	6.0	CRCP	CRC	0			AVS 7
RD	RD	EA	RE	PA	PA	PA	PERKIOMEN BR	COLLEGEVILLE	0332	COLLEGEVILLE	EMMAUS JCT	6.0	38.6	RDE	CRC	0			AVS 4
RD	RD	ES	RD	PA	PA	PA	PERKIOMEN BR	COLLEGEVILLE	0332	COLLEGEVILLE	EMMAUS JCT	6.0	38.6	RDE	CRC	0			
RD	RD	EA	RE	PA	PA	PA	PHL, HBG & PGH	HARRIS	0333	HARRIS	LURGAN	0.0	42.4	CRC	CRC	F			
RD	RD	EA	RE	PA	PA	PA	PHL, HBG & PGH	SHIP	0334	SHIP	PENN ROAD	40.1	41.3	CRC	CRC	F			
RD	RD	EA	RE	PA	PA	PA	PLYMOUTH BR	PLYMOUTH JCT	0335	PLYMOUTH JCT	ORELAND	0.0	9.1	CRC	CRC	F			
RD	RD	EA	RE	PA	PA	PA	PORT READING BR	WESTON	0336	WESTON	PORT READING	0.0	19.4	CRC	CRC	F			
RD	RD	EA	RE	PA	PA	PA	READING & COLUMBIA	SINKING SPRING	0337	SINKING SPRING	E. AKRON	0.0	15.0	CRC	CRC	F			
RD	RD	ES	RD	PA	PA	PA	READING & COLUMBIA	E. AKRON	0337	E. AKRON	E. LITITZ	15.0	20.0	RDE	CRC	0			AVS 4
RD	RD	EA	RE	PA	PA	PA	READING & COLUMBIA	E. LITITZ	0337	E. LITITZ	COLUMBIA	20.0	38.7	CRC	CRC	F			
RD	RD	EA	RE	PA	PA	PA	READING & COLUMBIA	COLUMBIA	0337	COLUMBIA	LANCASTER	38.7	39.7	CRC	CRC	F			
RD	RD	EA	RE	PA	PA	PA	READING & COLUMBIA	LANCASTER JCT	0338	LANCASTER JCT	LANCASTER	0.0	7.8	CRC	CRC	F			
RD	RD	EA	RE	PA	PA	PA	RDG BELT LINE	BLANDON	0339	BLANDON	KLAPPERTHAL JCT	0.0	13.0	CRC	CRC	F			
RD	RD	EA	RE	PA	PA	PA	RDG BELT LINE	CUMRU JCT	0340	CUMRU JCT	W&N JCT (8.4MI)	11.7	64.7	CRC	CRC	F			
RD	RD	EA	RE	PA	PA	PA	RDG BELT LINE	FALLS	0341	FALLS	PORT RICHMOND	5.4	11.8	CRC	CRC	F			
RD	RD	EA	RE	PA	PA	PA	RICHMOND BR	FALLS	0341	FALLS	EVANSVILLE	8.4	14.0	CRC	CRC	F			
RD	RD	EA	RE	PA	PA	PA	SCHUYLK & LEHIGH	LAUREL	0342	LAUREL	WEST MILTON	139.0	170.3	CRC	CRC	F			
RD	RD	EA	RE	PA	PA	PA	SS & L BR	SHENANDOAH	0343	SHENANDOAH	SHENANDOAH	0.0	6.0	CRC	CRC	F			
RD	RD	EA	RE	PA	PA	PA	SHENANDOAH BR	SHENANDOAH JCT	0344	SHENANDOAH JCT	SHENANDOAH	0.0	6.0	CRC	CRC	F			

3/24/76

CONRAIL ACTIVATION PLAN

DISPOSITION OF EXISTING LINES

JURISDICTION	PRV	RD DV	RG DV	ST	NAME	CODE	FROM	TO	MILE FROM	POST TO	OWN	OPN CNT	CR OP	PSGR OPNS	TRACKAGE RIGHTS	SPC CND
RD RD	EA RE	PA	PA	PA	STONY CREEK BR	0345	LANSDALE-DALE	KNEEDLER	0.0	1.5	CRC	CRC	F			1
RD RD	ES RD	PA	PA	PA	STONY CREEK BR	0345	KNEEDLER	NORRISTOWN	1.5	9.0	RDE	CRC	0			AVS 4
RD RD	EA RE	PA	PA	PA	NORRISTOWN BR	0345	NORRISTOWN	NORRISTOWN-KALB	9.0	10.5	CRC	CRC	FP	ST		1
RD RD	ES RD	PA	PA	PA	TAMEND BR	0346	HAUCKS	MAHANOY TUNNEL	0.0	2.9	RDE	CRC	0			AB 6
RD RD	ES RD	PA	PA	PA	TAMAQUA-HAZ-NOR	0347	HAZELTON JCT	SILVERBROOK	0.0	3.5	RDE	CRC	0			OS 6
RD RD	EA RE	NJ	NJ	NJ	TRENTON BR	0348	TRENTON	TRENTON	32.6	36.4	CRC	CRC	F			1
RD RD	EA RE	NJ	NJ	NJ	E TRENTON IT	0348A	TRENTON	EAST TRENTON	35.6	38.7	CRC	CRC	F			1
RD RD	EA RE	PA	PA	PA	WEST END BR	0349	MINE HILL XING	BUCKLEY	0.0	8.5	CRC	CRC	F			1
RD RD	EA RE	PA	PA	PA	WEST END BR	0349	BUCKLEY	RICHARDSON JCT	8.5	11.2	RDE	CRC	F			AB 6
RD RD	EA RE	PA	PA	PA	WEST END BR	0350	WESTWOOD	TRENTON JCT	0.0	9.2	CRC	CRC	F			1
RD RD	EA RE	PA	PA	PA	WEST END BR	0350	TRENTON JCT	GOOD SPRING	29.6	35.3	CRC	CRC	F			1
RD RD	ES RD	ES	ES	ES	WEST END BR	0350	GOOD SPRING	KEEFERS	35.3	37.0	RDE	CRC	0			OS 6
RD RD	ES RD	PA	PA	PA	WEST END BR	0351	PINE GROVE	TRENTON	23.0	29.6	RDE	CRC	0			AVS 4
RD RD	EA RE	DE	DE	DE	WILM & NORTHERN	0352	WILMINGTON	ELSMERE JCT-B&O	0.0	2.9	CRC	CRC	F			1
RD RD	ES RD	DE	DE	DE	WILM & NORTHERN	0352	ELSMERE JCT-B&O	DE/PA ST LN	2.9	12.7	RDE	CRC	0			AVS 4
RD RD	ES RD	PA	PA	PA	WILM & NORTHERN	0352	DE/PA ST LN	COATESVILLE	12.7	30.2	RDE	CRC	0			AVS 4
RD RD	EA RE	PA	PA	PA	WILM & NORTHERN	0352	COATESVILLE	BIRDSBORO-BE	30.2	63.4	CRC	CRC	F			1
RD RD	EA RE	PA	PA	PA	WAF RR	0353	HAGERSTOWN	MP 19.1	0.0	19.1	W&F	WM	F			OS 7
RD RD	EA RE	PA	PA	PA	WM RR	0353	MP 19.1	LURGAN	19.1	37.0	WM	WM	F		CRC	7
RD RD	ES IR	PA	PA	PA	IRONTON RR	0354	IRONTON	LEHIGH PORT CEM	0.0	1.0	IRE	CRC	0			AB 6
RD RD	EA RE	PA	PA	PA	IRONTON RR	0354	LEHIGH PORT CEM	COPLAY	1.0	5.5	CRC	CRC	F			1
RD RD	EA RE	PA	PA	PA	IRONTON RR	0354A	HOKENDAUQUA	COPLAY	0.0	3.7	CRC	CRC	F			1
RD RD	ES IR	PA	PA	PA	IRONTON RR	0354R	SIEGERSVILLE JCT	SIEGERSVILLE	0.0	3.0	IRE	CRC	0			AB 6
RD RD	EA RE	PA	PA	PA	PICKERING VAL BR	0378	PHOENIXVILLE	IRONSIDES	0.0	1.8	CRC	CRC	F			1
RD RD	EA RE	PA	PA	PA	STEELTON IT	0379	HARRISBURG	STEELTON	0.0	3.0	CRC	CRC	F			1
RD RD	EA RE	PA	PA	PA	GOOD SPRING COLL	0380	GOOD SPRING	END OF TRACK	0.0	1.4	CRC	CRC	F			1
RD RD	EA RE	PA	PA	PA	MUDDY COLLIERY	0381	WEST JCT	BRANCH DALE	0.0	2.7	CRC	CRC	F			1
RD RD	EA RE	PA	PA	PA	MUDDY COLLIERY	0382	SILVERTON	WEST JCT	2.0	2.6	CRC	CRC	F			1
RD RD	EA RE	PA	PA	PA	SWARTA COLLIERY	0383	SWATARA JCT	END OF TRACK	0.0	1.8	CRC	CRC	F			1
RD RD	EA RE	PA	PA	PA	MUNCY IND TRK	0384	MUNCY	END OF TRACK	0.0	0.6	CRC	CRC	F			4
RD RD	ES RD	PA	PA	PA	MT HOPE IND TR	0385	MANHEIM	WHITE OAK	0.0	4.7	RDE	CRC	0			AVS 4
RD RD	ES RD	PA	PA	PA	KUTZTOWN IN TR	0386	TOPTON	KUTZTOWN	0.0	4.4	RDE	CRC	0			AVS 4
RD RD	EA RE	PA	PA	PA	RACE & ARCH BR	0387	RACE ST	ARCH ST	0.0	0.5	CRC	CRC	F			1
RD RD	EA RE	PA	PA	PA	M'TOWN & M'TOWN	0389	HUMMELSTOWN	HUMMELSTOWN	0.0	0.8	MHRR	CRC	F			7
RD RD	OT MH	PA	PA	PA	M'TOWN & M'TOWN	0389	MIDDLETOWN	MIDDLETOWN	0.8	5.4	MHRR	CRC	0			OS 7
RD RD	EA RE	PA	PA	PA	M'TOWN & M'TOWN	0389	MIDDLETOWN	MIDDLETOWN	5.4	6.6	MHRR	CRC	F			7
RD RD	ES RD	PA	PA	PA	WILM & NORTHERN	0390	ELVERSON	WARWICK	0.0	2.7	RDE	CRC	0			AVS 4
RD RD	EA RE	DE	DE	DE	MARYLAND AVE BR	0391	WILMINGTON	MARYLAND AVE	0.0	0.8	CRC	CRC	F			1
RD RD	ES RD	DE	DE	DE	WILM & NORTHERN	0392	MONTCHANIN	ROCKLAND	0.0	1.1	RDE	CRC	0			4
RD RD	EA RE	DE	DE	DE	CATTIANA AVE BR	0393	DELAWARE RVR	EXT CHRISTIANA AV	0.0	1.8	CRC	CRC	F			1
RD RD	ES RD	DE	DE	DE	IND THK	0394	KENTMERE JCT	KENTMERE	0.0	2.3	RDE	CRC	0			OS 6
RD RD	EA RE	DE	DE	DE	SO. WALNUT ST BR	0395	DELAWARE RVR	EXT S WALNUT ST	0.0	1.3	CRC	CRC	F			1
RD RD	EA RE	DE	DE	DE	DFL RIVER EXT	0396A	MILL CREEK JCT	WARD	0.0	0.8	CRC	CRC	F			1
RD RD	EA RE	DE	DE	DE	DEL RIVER EXT	0396R	WAPD	PIGEON POINT	0.0	3.1	CRC	CRC	F			1

CONRAIL ACTIVATION PLAN

3/24/76

DISPOSITION OF EXISTING LINES

PAGE RD-RD 1-D

JURISDICTION	PRV	RD DV	RG DV	ST	---LINE---	CODE	FROM	TO	MILE POST	OWN	OPN	CR	PSGR	TRACKAGE	SPC
					NAME		FROM	TO	FROM	TO	CNT	OP	OPNS	RIGHTS	CND
RD RD	EA RE	PA		PA	RFLVUE BR	0397	28TH ST JCT	HENRY AV	4.5	5.0	CRC	F			1
RD RD	EA RE	PA		PA	WILLOW& NOBLE BR	0398	DELAWARE AV	CALLOWHILL JCT	0.0	1.5	CRC	F			1
RD RD	ES RD	NJ		NJ	TRENT-PRINCT BR	0399	TRENTON	JCT-E TRENTON BR	0.0	1.1	RDE	0			AB
RD RD	EA RE	NJ		NJ	TRENT-PRINCT BR	0399	JCT-E TRENTON BR	LAWRENCEVILLE	1.1	3.4	CRC	F			1
RD RD	ES RD	NJ		NJ	TPENT-PRINCT BR	0399	LAWRENCEVILLE	LAWRENCEVILLE	3.4	3.7	RDE	0			AB

N

**ConRail**  
**OPERATING JURISDICTION OF LINES**  
**(Post-Conveyance Jurisdiction)**

**Eastern Region**

CONRAIL ACTIVATION PLAN

CRC OPERATING JURISDICTION OF LINES

JURISDICTION	PRV	RD	OV	RG	DV	ST	NAME	CODE	FROM	TO	MILE POST	OWN	OPN	CR	PSGR	TRACKAGE	SPC
											FROM	TO	CNT	OP	OPNS	RIGHTS	CND
NC	CH	EA	CH	EA	CH	PA	M/L N Y WASH	1201	DARGY DP	PAY/DE ST LN	6.3	18.2	CRC	FP	AM ST		7
NC	CH	EA	CH	DE	EA	DE	M/L N Y WASH	1201	PAY/DE ST LN	WILM WEST YD	18.2	28.2	CRC	FP	AM ST		7
NC	CH	EA	CH	DE	EA	DE	M/L N Y WASH	1201	WILM WEST YD	DE/MD ST LN	28.2	41.4	CRC	FP	AM ST		7
NC	CH	EA	CH	MD	EA	MD	M/L N Y WASH	1201	DL/MD ST LN	BAY	41.4	92.0	CRC	FP	AM MF		7
NC	CH	EA	CH	MD	EA	MD	M/L N Y WASH	1201	BAY	MD/DC ST LN	92.0	131.4	CRC	FP	AM MF		7
NC	CH	EA	CH	DC	EA	DC	M/L N Y WASH	1201	MD/DC ST LN	WASHINGTON	131.4	135.1	CRC	FP	AM MF		7
NC	CH	EA	CH	DC	EA	DC	M/L LANDVRPOT YD	1211	LANDOVER	MD/DC ST LN	128.8	131.1	CRC	FP			1
NC	CH	EA	CH	DC	EA	DC	M/L LANDVRPOT YD	1211	LANDOVER	ANACOSTIA	131.1	134.2	CRC	F			1
NC	CH	EA	CH	DC	EA	DC	M/L LANDVRPOT YD	1211	ANACOSTIA	VIRGINIA	134.2	136.7	CRC	F		B&O	1
NC	CH	EA	CH	DC	EA	DC	M/L LANDVRPOT YD	1211	VIRGINIA	DC/VA ST LN	136.7	138.5	CRC	FP	AM	B&O	1
NC	CH	EA	CH	VA	EA	VA	M/L LANDVRPOT YD	1211	VIRGINIA	DC/VA ST LN	136.7	138.5	CRC	FP	AM	B&O	1
NC	CH	EA	CH	VA	EA	VA	M/L LANDVRPOT YD	1211	DC/VA ST LN	LONG BRIDGE DP	138.5	138.8	CRC	FP	AM	B&O	1
NC	CH	EA	CH	DE	EA	DE	DELMARVA BR	122A	PORTER	SEAFORD	14.4	84.1	CRC	F			1
NC	CH	EA	CH	DE	EA	DE	SEAFORD SEC	122B	SEAFORD	DE/MD ST LN	84.1	97.3	CRC	F			1
NC	CH	EA	CH	MD	EA	MD	POCOMOKE SEC	122C	DE/MD ST LN	POCOMOKE	0.0	31.5	CRC	F			1
NC	CH	EA	CH	DE	EA	DE	SHELLPOT BR	1221	BELL	RAGAN	0.0	7.0	CRC	F			1
NC	CH	EA	CH	MD	EA	MD	PORT RD BR	1222	PERRYVILLE	MD/PA ST LN	0.3	14.8	CRC	F	AM		1
NC	CH	EA	CH	PA	EA	PA	PORT RD BR	1222	MU/PA ST LN	CRESWELL DP	14.8	38.2	CRC	FP	AM		1
NC	CH	EA	CH	DE	EA	DE	DELMARVA BR	1223	DAVIS	PORTER	0.0	6.6	CRC	F			1
NC	CH	EA	CH	MD	EA	MD	NO CENTRAL BR	1224	CALVERT	COCKEYSVILLE	0.0	15.4	CRC	F	MF		1
NC	CH	EA	CH	MD	EA	MD	POPES CREEK SEC	1225	BOWIE	WOODZELL	0.0	46.0	CRC	F			1
NC	CH	EA	CH	MD	EA	MD	HERBERT SEC	1226	BRANDYWINE	HERBERT	0.0	11.4	CRC	F			1
NC	CH	EA	CH	MD	EA	MD	CHALK PT IND TRK	1227	HERBERT	CHALK POINT	0.0	5.9	CRC	F		CRC	1
NC	CH	EA	CH	DE	EA	DE	NEW CASTLE SEC	1228	BRIDGE	PORTER	0.0	14.4	CRC	F			1
NC	CH	EA	CH	DE	EA	DE	W WILMINGTON BR	1229A	WEST YD	BANK	0.0	0.8	CRC	F	ST		1
NC	CH	EA	CH	DE	EA	DE	N CASTLE IND TRK	1229	FARNHURST	N CASTLE-TASKER	4.1	6.6	CRC	F			1
NC	CH	EA	CH	DE	EA	DE	N&DC RUNNING TRK	1230	PORTER	REYBOLD	6.6	10.6	CRC	F			1
NC	CH	EA	CH	DE	EA	DE	DM & V SEC	1235	HARRINGTON	GEORGETOWN	0.0	24.0	CRC	F			1
NC	CH	EA	CH	DE	EA	DE	SNOW HILL SEC	1236	GEORGETOWN	DE/MD ST LN	0.0	19.2	CRC	F			1
NC	CH	EA	CH	MD	EA	MD	SNOW HILL SEC	1236	DE/MD ST LN	SNOW HILL	19.2	42.0	CRC	F			1
NC	CH	EA	CH	DE	EA	DE	MILTON TRK	1238	ELLENDALE	MILTON	0.0	6.8	CRC	F			1
NC	CH	EA	CH	MD	EA	MD	WILLARDS TRK	1239	SALISBURY	PERDUE SIDING	40.8	45.7	CRC	F			1
NC	CH	EA	CH	MD	EA	MD	OCEAN CITY TRK	1239	BERLIN	BERLIN	64.0	65.2	CRC	F			1
NC	CH	EA	CH	DE	EA	DE	CAMBRIDGE SEC	1240	SEAFORD	GEN MILLS	0.0	2.3	CRC	F			1
NC	CH	EA	CH	MD	EA	MD	CPIFIELD SEC	1242	KINGS CREEK	KINGS CREEK	0.0	1.2	CRC	F			1
NC	CH	EA	CH	PA	EA	PA	CHESTER CRK SEC	1245	LAMOKIN	UPLAND	0.0	0.5	CRC	F			1
NC	CH	EA	CH	PA	EA	PA	CHESTR PHILA TRK	1246	ISLAND ROAD	CHESTER	0.0	5.0	CRC	F			1
NC	CH	EA	CH	PA	EA	PA	CHESTRPHILACONN	1247	BALUWIN	CHESTER&PHILA BR	0.0	1.0	CRC	F			1
NC	CH	EA	CH	PA	EA	PA	LINWOOD TRK	1249	HOOK	SO CHESTER BR	0.0	0.4	CRC	F			1
NC	CH	EA	CH	PA	EA	PA	S CHESTER TRK	1250	CLAYMONT BR	LAMOKIN KUN TRK	0.0	4.4	CRC	F			1
NC	CH	EA	CH	PA	EA	PA	CLAYMONT TRK	1251	SO CHESTER BR	END	0.0	0.9	CRC	F			1
NC	CH	EA	CH	DE	EA	DE	FOGEMOOR TRK	1252	SHELLPOT BR	END	0.0	1.0	CRC	F			1
NC	CH	EA	CH	MD	EA	MD	PERRYVILLE TRK	1254	MINNICK	MILL CREEK	0.0	2.7	CRC	F			1
NC	CH	EA	CH	MD	EA	MD	HAVR D GRACE TRK	1255	OAK	JUNIATA ST	0.0	2.3	CRC	F			1
NC	CH	EA	CH	DE	EA	DE	POMEROY TRK	1256	DAVIS	NEWARK CENTER	0.0	1.9	CRC	F			1

CONRAIL ACTIVATION PLAN

3/24/76

CRC OPERATING JURISDICTION OF LINES

PAGE EA-CH 2-B

JURISDICTION	PRV	RD DV	RG DV	ST	LINE	NAME	CODE	STATIONS	FROM	TO	MILE POST	OWN	OPN	CR	PSGR	TRACKAGE	SPC
											FROM	TO	CNT	OP	OPNS	RIGHTS	CND
NC	CH	EA	CH	MD	PPRESIDENT ST TRK	1257	BAY VIEW	PRESIDENT ST			0.0	4.0	CRC	F			1
NC	CH	EA	CH	MD	CLAPEMONT R T	1258	BALTIMORE	STOCK YARD			0.0	1.1	CRC	F			1
NC	CH	EA	CH	MD	SPARROWS PT TRK	1259	BAY VIFW	SPARROWS POINT			0.0	5.6	CRC	F			1
NC	CH	EA	CH	MD	BEAR CREEK TRK	1260	MONUMENT ST	SOLLERS			0.0	6.3	CRC	F			1
NC	CH	EA	CH	MD	FORT MEADE TRK	1261	ODENTON	FORT MEADE			0.0	1.6	CRC	F			1
NC	CH	EA	CH	VA	ROSSLYN CONN TRK	1262	RO-LONG-BRDG	ROSSLYN			0.0	0.3	CRC	F			1
NC	CH	EA	CH	DE	BRANDYWINE TRK	1263	EDGE MOOR	KENTMERE			0.0	3.2	CRC	F			1
NC	CH	EA	CH	MD	MORGANTOWN SEC	1266	WOODZELL	MORGANTOWN			0.0	5.4	PEPC	F		CRC	7
NC	CH	EA	CH	MD	MILL STREET TRK	1267	SALISBURY	MILL ST			0.0	0.6	CRC	F			1

CONRAIL ACTIVATION PLAN

CRC OPERATING JURISDICTION OF LINES

JURISDICTION	RD DV	RG DV	ST	LINE NAME	CODE	FROM	TO	MILE POST FROM TO	OWN	OPN CNT	CR OP	PSGR OPNS	TRACKAGE RIGHTS	SPC CND C
NC HB	EA HB	EA HB	PA	M/L PHILA PGH	1302	PARKESBURG DP	LANCASTER EAST	45.0 64.5	CRC	CRC	P	AM		AVS 2
NC HB	EA HB	EA HB	PA	M/L PHILA PGH	1302	LANCASTER EAST	CONEWAGO	64.5 90.5	CRC	CRC	FP	AM		AVS 2
NC HB	EA HB	EA HB	PA	M/L PHILA PGH	1302	CONEWAGO	ROY	90.5 94.5	CRC	CRC	FP	AM		AVS 2
NC HB	EA HB	EA HB	PA	M/L PHILA PGH	1302	ROY	HARRISBURG YD	94.5 105.5	CRC	CRC	FP	AM		AVS 2
NC HB	EA HB	EA HB	PA	M/L PHILA PGH	1302	HARRISBURG YD	ROCKVILLE	105.5 109.9	CRC	CRC	FP	AM	D&H	1
NC HB	EA HB	EA HB	PA	M/L PHILA PGH	1302	ROCKVILLE	BANKS DP	109.9 113.3	CRC	CRC	FP	AM	D&H	1
NC HB	EA HB	EA HB	PA	M/L HBG BUF	1314	ROCKVILLE	SUNBURY	90.6 138.7	CRC	CRC	F			1
NC HB	EA HB	EA HB	PA	M/L HBG BUF	1314	MONTANDON JCT	NORTHUMBERLAND	278.0 286.1	CRC	CRC	F			1
NC HB	EA HB	EA HB	PA	M/L HBG BUF	1314	NORTHUMBERLAND	SUNBURY	286.1 287.5	CRC	CRC	F		D&H	1
NC HB	EA HB	EA HB	PA	PORT ROAD BR	1322	CRESWELL	PORT	38.2 39.7	CRC	CRC	FP	AM		1
NC HB	EA HB	EA HB	PA	SUSQUEHANNA BR	1323	LENOVER	PORT	1.1 33.7	CRC	CRC	F			1
NC HB	EA HB	EA HB	PA	SUSQUEHANNA BR	1323	PORT	SHOCKS	33.7 45.4	CRC	CRC	FP	AM		1
NC HB	EA HB	EA HB	PA	YORK HAVEN LINE	1323	SHOCKS	WAGO JCT	45.4 50.6	CRC	CRC	F			1
NC HB	EA HB	EA HB	PA	N CENTRAL BR	1324	HYDE	YORK	54.6 57.2	CRC	CRC	F			1
NC HB	EA HB	EA HB	PA	YORK HAVEN LINE	1325	WAGO JCT	LEMOYNE	66.7 83.2	CRC	CRC	F			1
NC HB	EA HB	EA HB	PA	YORK HAVEN LINE	1325	LEMOYNE	DAY	83.2 85.8	CRC	CRC	F		D&H N&W	1
NC HB	EA HB	EA HB	PA	YORK HAVEN LINE	1325	DAY	MARYSVILLE	85.8 90.4	CRC	CRC	F		D&H	1
NC HB	EA HB	EA HB	PA	YORK HAVEN LINE	1325	BANKS	BANKS	111.4 113.1	CRC	CRC	F		D&H N&W	1
NC HB	EA HB	EA HB	PA	FNOLA BR	1326	ENOLA	MARYSVILLE	88.8 90.4	CRC	CRC	F			1
NC HB	EA HB	EA HB	PA	COLUMBIA BR	1327	CORK	COLA	68.4 80.2	CRC	CRC	F			1
NC HB	EA HB	EA HB	PA	SUSQUEHANNA BR	1327	SHOCKS MILLS	ROYALTON	87.6 98.8	CRC	CRC	F			1
NC HB	EA HB	EA HB	PA	M/L PHILA PGH	1328	ROYALTON	HARRISBURG	94.3 104.0	CRC	CRC	FP	AM		1
NC HB	EA HB	EA HB	PA	WILKES BARRE BR	1329	SUNBURY KASE	W/BARRE CAREY	0.0 60.5	CRC	CRC	FP	AM		1
NC HB	EA HB	EA HB	PA	WILKES BARRE BR	1329	W/BARRE CAREY	LVR	60.5 62.9	D&H	D&H	F		CRC	7
NC HB	EA HB	EA HB	PA	CUMBERLAND VALBR	1331	HARRISBURG	LEMOYNE	0.0 1.5	CRC	CRC	F		CRC	7
NC HB	EA HB	EA HB	PA	CUMBERLAND VALBR	1331	LEMOYNE	PENN ROAD	1.5 41.6	CRC	CRC	F			1
NC HB	EA HB	EA HB	PA	CUMBERLAND VALBR	1331	PENN ROAD	PA/MD ST LN	41.6 68.2	CRC	CRC	F		WM	1
NC HB	EA HB	EA HB	MD	CUMBERLAND VALBR	1331	PA/MD ST LN	HAGERSTOWN	68.2 74.8	CRC	CRC	F		WM	1
NC HB	EA HB	EA HB	PA	FREDERICK SEC	1332	CLY	HANOVER	0.0 33.0	CRC	CRC	F		M&P	1
NC HB	EA HB	EA HB	PA	NFW HOLLAND SEC	1333	HONEY BROOK	CORK	17.6 41.0	CRC	CRC	F			1
NC HB	EA HB	EA HB	PA	QUARRYVILLE BR	1334	LANCASTER	FAIRVIEW AVE	0.0 1.8	CRC	CRC	F			1
NC HB	EA HB	EA HB	PA	QUARRYVILLE BR	1334	QUARRYVILLE	QUARRYVILLE	13.3 15.7	CRC	CRC	F			1
NC HB	EA HB	EA HB	PA	LEBANON SEC	1335	CONEWAGO	CONEWAGO	0.0 1.0	CRC	CRC	F			1
NC HB	EA HB	EA HB	PA	LEBANON SEC	1335	ALCOA	LEBANON 8TH ST	16.8 20.5	CRC	CRC	F			1
NC HB	EA HB	EA HB	PA	EAST LEBANON BR	1336	LEBANON	LEBANON	1.2 1.4	CRC	CRC	F			1
NC HB	EA HB	EA HB	PA	STEELTON CNL BR	1338	STEELTON	STEELTON	0.0 1.2	CRC	CRC	F			1
NC HB	EA HB	EA HB	PA	YORK SEC	1340	STONY BROOK	YORK	7.0 12.8	CRC	CRC	F			1
NC HB	EA HB	EA HB	PA	RICHMOND BR	1343	MARION	MARION	59.0 59.1	CRC	CRC	F			1
NC HB	EA HB	EA HB	PA	SELINGSGROVE SEC	1346	KRAEMER	SELINGSGROVE	37.0 42.5	CRC	CRC	F			1
NC HB	EA HB	EA HB	PA	SELINGSGROVE SEC	1346	SELINGSGROVE	SELINGSGROVE JCT	42.5 44.7	CRC	CRC	F			1
NC HB	EA HB	EA HB	PA	SHAMOKIN SEC	1347	SUNBURY KASE	SUNBURY 4TH ST	0.0 0.2	CRC	CRC	F			1
NC HB	EA HB	EA HB	PA	SHAMOKIN SEC	1347	SUNBURY 4TH ST	HORN CONN TRK	0.2 0.8	CRC	CRC	F			1
NC HB	EA HB	EA HB	PA	SHAMOKIN SEC	1347	HORN CONN TRK	PAXINOS	0.8 12.0	PCE	CRC	F			7
NC HB	EA HB	EA HB	PA	SHAMOKIN SEC	1347	PAXINOS	SHAMOKIN	12.0 18.2	CRC	CRC	F			1



CONRAIL ACTIVATION PLAN

CRC OPERATING JURISDICTION OF LINES

JURISDICTION	PRV	RD DV	CRC	RG DV	ST	LINE	NAME	CODE	FROM	STATIONS	TO	MILE	POST	OWN	OPN	CR	PSGR	TRACKAGE	SPC	
										---	---	FROM	TO		CNT	OP	OPNS	RIGHTS	CND	
CJ	CJ	EA	PH	NJ		M/L CNJ SOUTH		0215	WINSLOW JCT		NORMA	104.2	123.9	CRC	CRC	F				1
CJ	CJ	EA	PH	NJ		M/L CNJ SOUTH		0215	NORMA		BRIDGETON JCT	123.9	130.5	CRC	CRC	F				1
CJ	CJ	EA	PH	NJ		M/L CNJ SOUTH		0215	BRIDGETON JCT		BRIDGETON	130.5	132.8	CRC	CRC	F				1
CJ	CJ	EA	PH	NJ		DFERFIELD BR		0220	BRIDGETON JCT		DEERFIELD	0.0	3.8	CRC	CRC	F				1
CJ	CJ	EA	PH	NJ		CUMR & MAUR BR		0221	BRIDGETON JCT		MAURICETOWN	0.0	18.1	CRC	CRC	F				1
NC	PH	EA	PH	PA		M/L N Y WASH		1101	ARSENAL		DARBY DP	2.1	6.3	CRCA	CRC	FP	AM ST	D&H		2
NC	PH	EA	PH	PA		HOLMSBRG JCT-DP		1101	HOLMSBRG JCT DP		ARSENAL	76.0	90.3	CRCA	CRC	FP	AM ST			2
NC	PH	EA	PH	PA		M/L PHILA PGH		1102	SUBURBAN STA		ZOO	0.0	2.0	CRCA	CRC	P	AM ST			2
NC	PH	EA	PH	PA		M/L PHILA PGH		1102	ZOO		PARK	2.0	43.9	CRCA	CRC	FP	AM ST			2
NC	PH	EA	PH	PA		M/L PHILA PGH		1102	PARK		PARKESBURG DP	43.9	45.0	CRCA	CRC	P	AM		AVS	2
NC	PH	EA	PH	PA		TRENTON BR		1121	GLENDALE		MORRIS	0.0	46.0	CRC	CRC	F				1
NC	PH	EA	PH	PA		P & T BR		1122	DALE		THORN	23.7	34.3	CRC	CRC	F				1
NC	PH	EA	PH	PA		SUSQUEHANNA BR		1123	PARKESBURG		LENOVER	0.0	1.1	CRC	CRC	F				1
NC	PH	EA	PH	NJ		BORDENTOWN BR		1125	CAMDEN		DELAIR	0.9	5.0	CRC	CRC	F				1
NC	PH	EA	PH	NJ		BORDENTOWN BR		1125	DELAIR		EDGEWATER PK DP	5.0	16.0	CRC	CRC	F				1
NC	PH	EA	PH	NJ		DRRR&B CO BR		1127	SHORE		JERSEY	0.0	2.3	CRC	CRC	F				1
NC	PH	EA	PH	NJ		DRRR&B CO BR		1127	JERSEY		HADDONFIELD	2.3	8.1	CRC	CRC	F				1
NC	PH	EA	PH	PA		CHESTNUT HILL BR		1128	NO PHILADELPHIA		QUEEN LANE	0.0	2.2	CRC	CRC	FP	ST			1
NC	PH	EA	PH	PA		CHESTNUT HILL BR		1128	QUEEN LANE		CHESTNUT HILL	2.2	6.6	CRCS	CRC	P	ST		AVS	2
NC	PH	EA	PH	PA		SCHUYLKILL BR		1129	VALLEY		MANAYUNK	4.0	8.2	CRC	CRC	FP	ST			1
NC	PH	EA	PH	PA		SCHUYLKILL BR		1129	MANAYUNK		N READING	8.2	60.4	CRC	CRC	F				1
NC	PH	EA	PH	PA		WEST CHESTER BR		1130	ARSENAL		WEST CHESTER	2.1	27.5	CRC	CRC	FP	ST			2
NC	PH	EA	PH	PA		SUBURBAN LINE		1132	30TH ST STA		ARSENAL	0.7	1.2	CRCS	CRC	P	ST			2
NC	PH	EA	PH	PA		36TH ST CONN		1133	PENN RIVER LINE		ZOO 38TH ST	1.5	2.5	CRCA	CRC	P	AM ST			2
NC	PH	EA	PH	PA		NEW YORK CONN		1134	34TH ST		RIVER LINE	2.1	2.8	CRCA	CRC	P	AM ST			2
NC	PH	EA	PH	PA		NY&PGH SURWAY		1135	ZOO		ZOO 44TH ST	0.0	0.8	CRCA	CRC	P	AM ST			2
NC	PH	EA	PH	PA		JERSEY TRACK		1136	ZOO		42ND ST	0.0	0.5	CRC	CRC	F				1
NC	PH	EA	PH	PA		RELMONT BR		1137	BELMONT RDG		ZOO	0.0	1.7	CRC	CRC	F		D&H		1
NC	PH	EA	PH	PA		PERRY TRKS		1138	ZOO		ZOO	0.0	0.3	CRC	CRC	F		D&H		1
NC	PH	EA	PH	PA		ZOO RUN DOWN TRK		1139	ZOO		ZOO	1.3	2.5	CRC	CRC	F				1
NC	PH	EA	PH	PA		PHILA ELEVATED		1140	ZOO		BRILL	0.3	4.6	CRC	CRC	F		D&H		1
NC	PH	EA	PH	PA		GRAYS FERRY BR		1142	ZOO 34TH ST		ARSENAL	0.0	2.4	CRCS	CRC	P	ST			2
NC	PH	EA	PH	PA		DFLAWARE EXT		1143	ARSENAL		DOCK ST	1.5	11.2	CRC	CRC	F				1
NC	PH	EA	PH	PA		GIRARD POINT BR		1144	PENROSE		GIRARD POINT	0.0	1.4	CRC	CRC	F				1
NC	PH	EA	PH	PA		60TH ST BR		1145	BRILL		FORT MIFFLIN	0.0	4.1	CRC	CRC	F				1
NC	PH	EA	PH	PA		CHESTER PHILA BR		1146	FORT MIFFLIN		ISLAND RD RDG	0.0	4.3	CRC	CRC	F				1
NC	PH	EA	PH	PA		COATESVILLE BR		1149	POMEROY		LYKENS STEEL CO	0.0	2.9	CRC	CRC	F				1
NC	PH	EA	PH	PA		FRAZER TRK		1150	FRAZER		FRAZER	23.6	24.4	CRC	CRC	F				1
NC	PH	EA	PH	PA		PENCOYD BR		1151	WEST MANAYUNK		RDG RR	0.0	0.6	CRC	CRC	F				1
NC	PH	EA	PH	PA		PHOENIXVILLE BR		1152	PHOENIXVILLE		DEVAULT	0.0	6.0	CRC	CRC	F				1
NC	PH	EA	PH	PA		PHOENIXVILLE BR		1152	MP 9.2		DALE JCT	9.2	10.0	CRC	CRC	F				1
NC	PH	EA	PH	PA		ROYERSFORD BR		1153	SPRING CITY		ROYERSFORD	0.0	1.0	CRC	CRC	F				1
NC	PH	EA	PH	PA		COURT ST BR		1154	READING		COURT ST	0.7	1.0	CRC	CRC	F				1
NC	PH	EA	PH	NJ		PEMBERTON BR		1162	PAVONIA		MERCHANTVILLE	2.6	5.0	CRC	CRC	F				1

CONRAIL ACTIVATION PLAN  
CRC OPERATING JURISDICTION OF LINES

JURISDICTION	PRV	RD	DV	RG	DV	ST	NAME	CODE	FROM	TO	MILE POST	OWN	OPN	CR	PSGR	TRACKAGE	SPC
											FROM	TO	CNT	OP	OPNS	RIGHTS	CND
NC	PH	EA	PH	EA	PH	NJ	PEMBERTON BR	1162	MERCHANTVILLE	PEMBERTON	5.0	24.9	CRC	F			
NC	PH	EA	PH	EA	PH	NJ	UNION TRANS CO	1164	LEWIS	FORT DIX	0.0	5.6	CRC	F			
NC	PH	EA	PH	EA	PH	NJ	DIX RUNNING TRK	1164	PEMBERTON	LEWIS	24.9	27.8	CRC	F			
NC	PH	EA	PH	EA	PH	NJ	MEDFORD BR	1165	MT HOLLY	LUMBERTON RD	0.3	1.3	CRC	F			
NC	PH	EA	PH	EA	PH	NJ	PETTY ISLAND BR	1167	BORDENTOWN BR	PETTY ISLAND	0.0	2.0	CRC	F			
NC	PH	EA	PH	EA	PH	NJ	PENSAUKEN BR	1169	MINSON N J	END	0.0	1.1	CRC	F			
NC	PH	EA	PH	EA	PH	NJ	CONN TRK BR 1	1174	MINSON BORD BR	DRRR & B CO BR	0.0	0.3	CRC	F			
NC	PH	EA	PH	EA	PH	PA	BUSTLETON BR	1172	HOLMESBURG JCT	WELSH ROAD	0.0	3.4	CRC	F			
NC	PH	EA	PH	EA	PH	PA	KENSIN-TACONY BR	1173	TRENTON AVE EL	TACONY	0.0	5.5	CRC	F			
NC	PH	EA	PH	EA	PH	PA	FRANKFORD ST BR	1174	TRENTON AVE EL	TACONY-BUCKIUS	80.3	82.0	CRC	F			
NC	PH	EA	PH	EA	PH	PA	FRANKFORD AVE ELEV	1175	FRANKFORD JCT	PORT RICH CONN	80.0	82.0	CRC	F			
NC	PH	EA	PH	EA	PH	PA	TRENTON AVE ELEV	1175	PORT RICH CONN	FRANKFORD AVE	82.0	82.8	CRC	F			
NC	PH	EA	PH	EA	PH	PA	COMMERCE ST BR	1176	DEL AVE BR	KENSINGTON	0.0	0.5	CRC	F			
NC	PH	EA	PH	EA	PH	PA	CANAL ST BR	1177	DEL AVE BR	LLEWELLYN ST	0.0	0.5	CRC	F			
NC	PH	EA	PH	EA	PH	PA	DELAWARE AVE BR	1178	DOCK ST	PORT RICHMOND	81.9	85.6	CRC	F			
NC	PH	EA	PH	EA	PH	PA	SWANSON ST BR	1179	DEL EXT	MORRIS ST	0.0	1.2	CRC	F			
NC	PH	EA	PH	EA	PH	PA	WASHINGTON AV BR	1180	23RD ST	31ST ST	0.0	1.0	CRC	F			
NC	PH	EA	PH	EA	PH	PA	WASHINGTON AV BR	1180	23RD ST	DELAWARE AVE	1.5	4.2	CRC	F			
NC	PH	EA	PH	EA	PH	PA	OXFORD RD BR	1181	"C" ST YARD	READING RR	0.0	3.2	CRC	F			
NC	PH	EA	PH	EA	PH	PA	FAIRHILL BR	1182	FAIRHILL YD	INDIANA AVE	0.0	0.8	CRC	F			
NC	PH	EA	PH	EA	PH	PA	ENGLESDALE BR	1183	MAIN LINE	MASTER ST	0.0	0.3	CRC	F			
NC	PH	EA	PH	EA	PH	PA	MIDVALE BR	1184	CHESTNUT HILL BR	WISSAHICKON AVE	0.0	0.3	CRC	F			
NC	PH	EA	PH	EA	PH	PA	NEWTOWN SQ BR	1186	FERNWOOD	GRASSLAND	5.6	10.5	CRC	F			
NC	PH	EA	PH	EA	PH	PA	CARDINGTON BR	1187	GARRETT RD	MILLBOURNE MILLS	6.5	8.8	CRC	F			
SL	SL	EA	PH	EA	PH	NJ	M/L ATLANTIC CTY	9901	LINDENWALD	LUCASTON	11.1	13.6	CRCN	0			
SL	SL	EA	PH	EA	PH	NJ	M/L ATLANTIC CTY	9901	LUCASTON	ATLANTIC CITY	13.6	58.0	CRC	F			
SL	SL	EA	PH	EA	PH	NJ	M/L ATLANTIC CTY	9901	LUCASTON	END OF TRACK	58.0	59.0	CRC	F			
SL	SL	EA	PH	EA	PH	NJ	MILLVILLE BR	9902	BULSON ST	CAMDEN BROWN	1.0	2.5	CRC	F			
SL	SL	EA	PH	EA	PH	NJ	CLEMENTON BR	9902	CAMDEN BROWN	WINSLOW	2.5	26.1	CRC	F			
SL	SL	EA	PH	EA	PH	NJ	CAPE MAY BR	9903	WINSLOW	CAPE MAY	26.1	80.0	CRC	FP	NJ		
SL	SL	EA	PH	EA	PH	NJ	YARD TRK	9904	CAPE MAY	CAPE MAY PT	0.0	2.0	CRC	F			
SL	SL	EA	PH	EA	PH	NJ	WILDWOOD RR	9905	WILDWOOD JCT	WILDWOOD JCT	72.5	72.9	CRC	F			
SL	SL	EA	PH	EA	PH	NJ	OCEAN CITY BR	9906	TUCKAHOE	PALERMO	53.1	59.6	CRC	F			
SL	SL	EA	PH	EA	PH	NJ	OCEAN CITY BR	9906	PALERMO	OCEAN CITY 10ST	59.6	66.4	CRCN	0			
SL	SL	EA	PH	EA	PH	NJ	P VILLE SEC	9907	PLEASANTVILLE	MAIN LINE	56.9	62.2	CRC	F			
SL	SL	EA	PH	EA	PH	NJ	LINWOOD SEC	9908	PLEASANTVILLE	LINWOOD	0.0	3.8	CRC	F			
SL	SL	EA	PH	EA	PH	NJ	MILLVILLE BR	9909	PAVONIA	CAMDEN BROWN	0.7	2.5	CRC	F			
SL	SL	EA	PH	EA	PH	NJ	MILLVILLE MANSK BR	9909	CAMDEN BROWN	MANUMUSKIN	2.5	48.1	CRC	F			
SL	SL	EA	PH	EA	PH	NJ	GLENLOCH SEC	9911	E GLOUCESTER	GLENLORA	3.9	9.5	CRC	F			
SL	SL	EA	PH	EA	PH	NJ	PFNNS GROVE BR	9912	WOODBURY W END	PENNS GR DEL RV	8.8	30.1	CRC	F			
SL	SL	EA	PH	EA	PH	NJ	DWATER POINT SEC	9913	WOODBURY WALK AV	DEEP WATER	29.8	32.4	CRC	F			
SL	SL	EA	PH	EA	PH	NJ	SALEM SEC	9914	WOODBURY	SALEM	8.8	37.2	CRC	F			
SL	SL	EA	PH	EA	PH	NJ	BRIDGETON SEC	9915	GLASSBORO	BRIDGETON	17.8	38.5	CRC	F			
SL	SL	EA	PH	EA	PH	NJ	YARD TRK	9916	GLASSBORO	GLASSBORO	18.3	19.3	CRC	F			

AVS

AVS

3/24/76

CONRAIL ACTIVATION PLAN

CRC OPERATING JURISDICTION OF LINES

JURISDICTION	PRV	RD DV	RG DV	ST	NAME	LINE	CODE	FROM	TO	MILE POST	OWN	OPN	CR	PSGR	TRACKAGE	SPC
										FROM TO		CNT	OP	OPNS	RIGHTS	CND
SL SL	EA PH	NJ			LFESBURG SEC		9917	MANJUMUSKIN JCT	LEESBURG	46.4 51.5	CRC	CRC	F			1
SL SL	EA PH	NJ			B LEYS POINT TRK		9918	BEESLEYS POINT	BEESLEYS POINT	0.0 2.0	CRC	CRC	F			1
SL SL	EA PH	NJ			SHELL SDG		9919	PAULSBORO	SHELL SIDING	0.0 1.0	CRC	CRC	F			1
SL SL	EA PH	NJ			PAULSBORO BRCH		9920	PAULSBORO	PAULSBORO	0.0 0.5	CRC	CRC	F			1

CONRAIL ACTIVATION PLAN  
CRC OPERATING JURISDICTION OF LINES

3/24/76

JURISDICTION	PRV	RD	DV	RG	DV	ST	LINE	NAME	CODE	FROM	STATIONS	TO	MILE POST	OWN	OPN	CR	PSGR	TRACKAGE	SPC
RD	DV	EA	RE	EA	RE	PA	---	---	---	---	---	---	FROM	TO	CNT	OP	OPNS	RIG-TS	CND
RD	EA	RE	EA	RE	PA	PA	RETLEHEM BR	0301	WILLOW ST	TABOR JCT	TABOR JCT	0.0	5.9	CRC	F				
RD	EA	RE	EA	RE	PA	PA	RETLEHEM BR	0301	TABOR JCT	QUAKERTOWN	QUAKERTOWN	7.0	40.2	CRC	FP	ST			
RD	EA	RE	EA	RE	PA	PA	RETLEHEM BR	0301	QUAKERTOWN	BETHLEHEM	BETHLEHEM	40.2	56.6	CRC	FP	ST			
RD	EA	RE	EA	RE	PA	PA	RLOOMSBURG BR	0302	RUPERT	BLOOMSBURG	BLOOMSBURG	0.0	1.6	CRC	F				
RD	EA	RE	EA	RE	PA	PA	BLUE LINE CONN	0303	NICE	WAYNE	WAYNE	0.0	0.7	CRC	F				
RD	EA	RE	EA	RE	PA	PA	C & F BR	0304	CATASAQUA	ALBURTIIS	ALBURTIIS	0.0	14.1	CRC	F				
RD	EA	RE	EA	RE	PA	PA	CHAPMAN BR	0304R	CHAPMAN	LEHIGH ECON ADV	LEHIGH ECON ADV	0.0	1.1	CRC	F				
RD	EA	RE	EA	RE	PA	PA	CATAWISSA BR	0305	BARNES	E MAHANOV JCT	E MAHANOV JCT	103.0	103.6	CRC	F				
RD	EA	RE	EA	RE	PA	PA	CATAWISSA BR	0305	DANVILLE	DANVILLE	DANVILLE	154.7	155.2	CRC	F				
RD	EA	RE	EA	RE	PA	PA	CATAWISSA BR	0305	MILTON	NEWBERRY JCT	NEWBERRY JCT	169.0	203.5	CRC	F				
RD	EA	RE	EA	RE	PA	PA	DOUGAL BR	0305A	MILTON	MILTON	MILTON	0.0	0.6	CRC	F				
RD	EA	RE	EA	RE	PA	PA	MILTON BR	0305R	MILTON BR JCT	MILTON	MILTON	0.0	0.9	CRC	F				
RD	EA	RE	EA	RE	PA	PA	CHESTER BR	0306	EASTWICK	60TH ST	60TH ST	0.0	1.3	CRC	F				
RD	EA	RE	EA	RE	PA	PA	CHESTER BR	0306	60TH ST	PHILA AIRPORT	PHILA AIRPORT	1.3	4.9	CRC	F				
RD	EA	RE	EA	RE	PA	PA	CHESTER BR	0306	PHILA AIRPORT	END OF TRACK	END OF TRACK	4.9	15.3	CRC	F				
RD	EA	RE	EA	RE	PA	PA	CEDAR HOLLOW BR	0307A	CEDAR HOLLOW	END OF TRACK	END OF TRACK	0.0	2.5	CRC	F				
RD	EA	RE	EA	RE	PA	PA	CHESTER VAL BR	0307R	BRIDGEPORT	DOWNINGTOWN	DOWNINGTOWN	0.0	21.3	CRC	F				
RD	EA	RE	EA	RE	PA	PA	CHESTNUT HILL BR	0308	WAYNE JCT	CHESTNUT HILL	CHESTNUT HILL	5.1	10.8	CRC	P	ST		AVS	
RD	EA	RE	EA	RE	PA	PA	CITY BR	0309	CALLOWHILL JCT	PARK	PARK	0.4	2.4	CRC	F				
RD	EA	RE	EA	RE	PA	PA	CITY BR	0309	PARK	FALLS	FALLS	2.4	5.4	CRC	F		D&H		
RD	EA	RE	EA	RE	PA	PA	CORNWALL BR	0310	LEBANON-WALL	REX	REX	0.0	6.5	CRC	F				
RD	EA	RE	EA	RE	PA	PA	DOYLESTOWN BR	0311	LANSDALE	FORTUNA	FORTUNA	0.0	1.5	CRC	P	ST			
RD	EA	RE	EA	RE	PA	PA	DOYLESTOWN BR	0311	FOPTUNA	DOYLESTOWN	DOYLESTOWN	1.5	10.0	CRC	P	ST		AVS	
RD	EA	RE	EA	RE	PA	PA	EAST PENNA BR	0312	READING PIKE	ALLENSTOWN BURN	ALLENSTOWN BURN	1.1	35.4	CRC	F				
RD	EA	RE	EA	RE	PA	PA	SCHUYL VAL BR	0313R	MILL CREEK JCT	MIDDLEPORT	MIDDLEPORT	1.5	7.0	CRC	F				
RD	EA	RE	EA	RE	PA	PA	FRACKVILLE BR	0313C	POTTSVILLE JCT	ST CLAIR	ST CLAIR	0.0	4.1	CRC	F				
RD	EA	RE	EA	RE	PA	PA	FRANKFORD BR	0314	FRANKFORD JCT	FRANKFORD	FRANKFORD	8.1	10.7	CRC	F				
RD	EA	RE	EA	RE	PA	PA	GETTYSBURG & HBG	0315	GETTYSBURG JCT	CARLISLE	CARLISLE	0.0	0.8	CRC	F				
RD	EA	RE	EA	RE	PA	PA	GETTYSBURG BR	0315	GETTYSBURG JCT	MT HOLLY SPRINGS	MT HOLLY SPRINGS	6.3	7.8	CRC	F				
RD	EA	RE	EA	RE	PA	PA	HERNDON BR	0316	HERN	TREVORTON	TREVORTON	0.0	7.8	CRC	F				
RD	EA	RE	EA	RE	PA	PA	LFHANON VAL BR	0318A	READING	OLEY	OLEY	0.0	0.2	CRC	F				
RD	EA	RE	EA	RE	PA	PA	LFHANON VAL BR	0318R	READING	HARRISBURG	HARRISBURG	0.0	53.6	CRC	F				
RD	EA	RE	EA	RE	PA	PA	LITTLE SEHUYLK	0319	CLINTON	BARNES	BARNES	78.3	103.0	CRC	F				
RD	EA	RE	EA	RE	PA	PA	LOW GRADE BRANCH	0320	NICE	NEWTOWN JCT	NEWTOWN JCT	0.0	1.8	CRC	F				
RD	EA	RE	EA	RE	PA	PA	M/L RDG	0322R	FALLS	HERN	HERN	103.0	139.0	CRC	F				
RD	EA	RE	EA	RE	PA	PA	M/L RDG	0322R	NORRIS	NORRIS	NORRIS	5.4	18.0	CRC	F				
RD	EA	RE	EA	RE	PA	PA	M/L RDG	0322R	NORRIS	POTTSVILLE	POTTSVILLE	18.0	40.5	CRC	FP	ST		D&H	
RD	EA	RE	EA	RE	PA	PA	M/L RDG	0322R	POTTSVILLE	READING-PIKE	READING-PIKE	40.5	59.9	CRC	FP	ST		D&H	
RD	EA	RE	EA	RE	PA	PA	M/L RDG	0322R	READING-PIKE	READING-BELT	READING-BELT	59.9	61.4	CRC	FP	ST		D&H	
RD	EA	RE	EA	RE	PA	PA	M/L RDG	0322R	READING-BELT	POTTSVILLE	POTTSVILLE	61.4	93.6	CRC	FP	ST		D&H	
RD	EA	RE	EA	RE	PA	PA	NORTH ADAMS IT	0322C	ABRAMS - MP 20.7	FIRST AV	FIRST AV	0.0	1.3	CRC	F				
RD	EA	RE	EA	RE	PA	PA	MORRISVILLE BR	0323	FAIRLESS JCT	MORRISVILLE	MORRISVILLE	0.0	6.6	CRC	F				
RD	EA	RE	EA	RE	PA	PA	NEW HOPE BR	0324	CARMEL	WARMINSTER	WARMINSTER	0.0	7.3	CRC	FP	ST			
RD	EA	RE	EA	RE	PA	PA	NEW HOPE BR	0324	WARMINSTER	IVYLAND	IVYLAND	7.3	9.4	CRC	F				

CONRAIL ACTIVATION PLAN

CRC OPERATING JURISDICTION OF LINES

JURISDICTION	PRV	RD	DV	RG	DV	ST	LINE	NAME	CODE	FROM	TO	MILE POST	OWN	OPN	CR	PSGR	TRACKAGE	SPC
RD	DV	EA	RE	EA	RE	ST	---	---	---	STATIONS	---	FROM	TO	CNT	OP	OPNS	RIGHTS	CND
RD	RD	EA	RE	PA	NEW YORK BR	0325	CHELTENHAM JCT	NEW TOWN	9.6	26.3	CRCS			CRC	P	ST		AVS
RD	RD	EA	RE	PA	NEW YORK BR	0326	JENKIN	PA/NJ ST LN	10.8	31.4	CRC			CRC	FP	ST		
RD	RD	EA	RE	NJ	NEW YORK BR	0326	PA/NJ ST LN	WEST TRENTON	31.4	32.5	CRC			CRC	FP	ST	NJ	
RD	RD	EA	RE	NJ	NEW YORK BR	0326	WEST TRENTON	BOUND BROOK JCT	32.5	58.4	CRC			CRC	FP	NJ		
RD	RD	EA	RE	PA	N.Y. SHORT LINE	0327	CHELTENHAM JCT	NESHAMINY	6.2	9.6	CRC			CRC	FP	ST		
RD	RD	EA	RE	PA	N.Y. SHORT LINE	0327	CHELTENHAM JCT	READING TERM	9.6	19.2	CRC			CRC	F			
RD	RD	EA	RE	PA	NINTH STREET BR	0328	SPRING GARDEN	TABOR JCT	1.0	7.0	CRC			CRC	P	ST		
RD	RD	EA	RE	PA	NINTH STREET BR	0328	SPRING GARDEN	NORRISTOWN KALB	3.5	17.3	CRC			CRC	P	ST		
RD	RD	EA	RE	PA	NINTH STREET BR	0329	16TH ST	NORRISTOWN BR	0.0	0.3	CRC			CRC	FP	ST		
RD	RD	EA	RE	PA	ISLAND COVN BR	0330	NORRISTOWN ISL	NORRISTOWN BR	0.0	0.3	CRC			CRC	F			
RD	RD	EA	RE	PA	NORRISTOWN BR	0330	NORRISTOWN KALB	NORRIS	0.3	1.0	CRC			CRC	FP	ST		
RD	RD	EA	RE	PA	OLNEY BR	0331	ERIE	FRANKFORD JCT	0.0	2.7	CRC			CRC	F			
RD	RD	EA	RE	PA	PERKIOMEN BR	0332	PERKIOMEN	OAKS	0.0	1.5	CRC			CRC	F			
RD	RD	EA	RE	PA	PERKIOMEN BR	0332	OAKS	COLLEGEVILLE	1.5	6.0	CRCP			CRC	0			AVS
RD	RD	EA	RE	PA	PHLHGB & PGH	0333	HARRIS	LURGAN	0.0	42.4	CRC			CRC	F			
RD	RD	EA	RE	PA	PHLHGB & PGH	0334	SHIP	PENN ROAD	40.1	41.3	CRC			CRC	F			
RD	RD	EA	RE	PA	PLYMOUTH BR	0335	PLYMOUTH JCT	ORELAND	0.0	9.1	CRC			CRC	F			
RD	RD	EA	RE	PA	PORT READING BR	0336	WESTON	PORT READING	0.0	19.4	CRC			CRC	F			
RD	RD	EA	RE	PA	READING&COLUMBIA	0337	SINKING SPRING	E. AKRON	0.0	15.0	CRC			CRC	F			
RD	RD	EA	RE	PA	READING&COLUMBIA	0337	E. LITITZ	COLUMBIA	20.0	38.7	CRC			CRC	F			
RD	RD	EA	RE	PA	READING&COLUMBIA	0337	COLUMBIA	COLUMBIA	38.7	39.7	CRC			CRC	F			
RD	RD	EA	RE	PA	READING&COLUMBIA	0338	LANCASTER JCT	LANCASTER	0.0	7.8	CRC			CRC	F			AVS
RD	RD	EA	RE	PA	RDG BELT LINE	0339	BLANDON	KLAPPERHAL JCT	0.0	13.0	CRC			CRC	F		D&H	
RD	RD	EA	RE	PA	RDG BELT LINE	0340	CUMRU JCT	W&N JCT (8.4MI)	11.7	64.7	CRC			CRC	F		D&H	
RD	RD	EA	RE	PA	RICHMOND BR	0341	FALLS	PORT RICHMOND	5.4	11.8	CRC			CRC	F			
RD	RD	EA	RE	PA	SCHUYLK & LEHIGH	0342	LAUREL	EVANSVILLE	8.4	14.0	CRC			CRC	F			
RD	RD	EA	RE	PA	SS & L BR	0343	HERN	WEST MILTON	139.0	170.3	CRC			CRC	F			
RD	RD	EA	RE	PA	SHENANDOAH BR	0344	SHENANDOAH JCT	SHENANDOAH	0.0	6.0	CRC			CRC	F			
RD	RD	EA	RE	PA	STONY CREEK BR	0345	LANSDALE-DALE	KNEEDLER	0.0	1.5	CRC			CRC	F			
RD	RD	EA	RE	PA	NORRISTOWN BR	0345	NORRISTOWN	NORRISTOWN-KALB	9.0	10.5	CRC			CRC	FP	ST		
RD	RD	EA	RE	NJ	TRENTON BR	0348	W TRENTON	TRENTON	32.6	36.4	CRC			CRC	F			
RD	RD	EA	RE	NJ	E TRENTON IT	0348A	TRENTON	EAST TRENTON	35.6	38.7	CRC			CRC	F			
RD	RD	EA	RE	PA	WEST END BR	0349	MINE HILL XING	BUCKLEY	0.0	8.5	CRC			CRC	F			
RD	RD	EA	RE	PA	WEST END BR	0350	WESTWOOD	TREMONT JCT	0.0	9.2	CRC			CRC	F			
RD	RD	EA	RE	PA	WEST END BR	0350	TREMONT JCT	GOOD SPRING	29.6	35.3	CRC			CRC	F			
RD	RD	EA	RE	DE	WILM & NORTHERN	0352	WILMINGTON	ELSMERE JCT-3&0	0.0	2.9	CRC			CRC	F			
RD	RD	EA	RE	PA	WILM & NORTHERN	0352	COATESVILLE	BIRDSBORO-BE	30.2	63.4	CRC			CRC	F			
RD	RD	EA	RE	PA	WAF BR	0353	HAGERSTOWN	MP 19.1	0.0	19.1	W&F			CRC	0			OS
RD	RD	EA	RE	PA	WM PR	0353	MP 19.1	LURGAN	19.1	37.0	WM			WM	F		CRC	
RD	RD	EA	RE	PA	IRONTON RR	0354	LEHIGH PORT CEM	COPLAY	1.0	5.5	CRC			CRC	F			
RD	RD	EA	RE	PA	IRONTON RR	0354A	HOKENDAUQUA	COPLAY	0.0	3.7	CRC			CRC	F			
RD	RD	EA	RE	PA	PICKERING VAL BR	0378	PHOENIXVILLE	IRONSIDES	0.0	1.8	CRC			CRC	F			
RD	RD	EA	RE	PA	STEELTON IT	0379	HAPHISBURG	STEELTON	0.0	3.0	CRC			CRC	F			
RD	RD	EA	RE	PA	GOOD SPRING COLL	0380	GOOD SPRING	END OF TRACK	0.0	1.4	CRC			CRC	F			

3/24/76

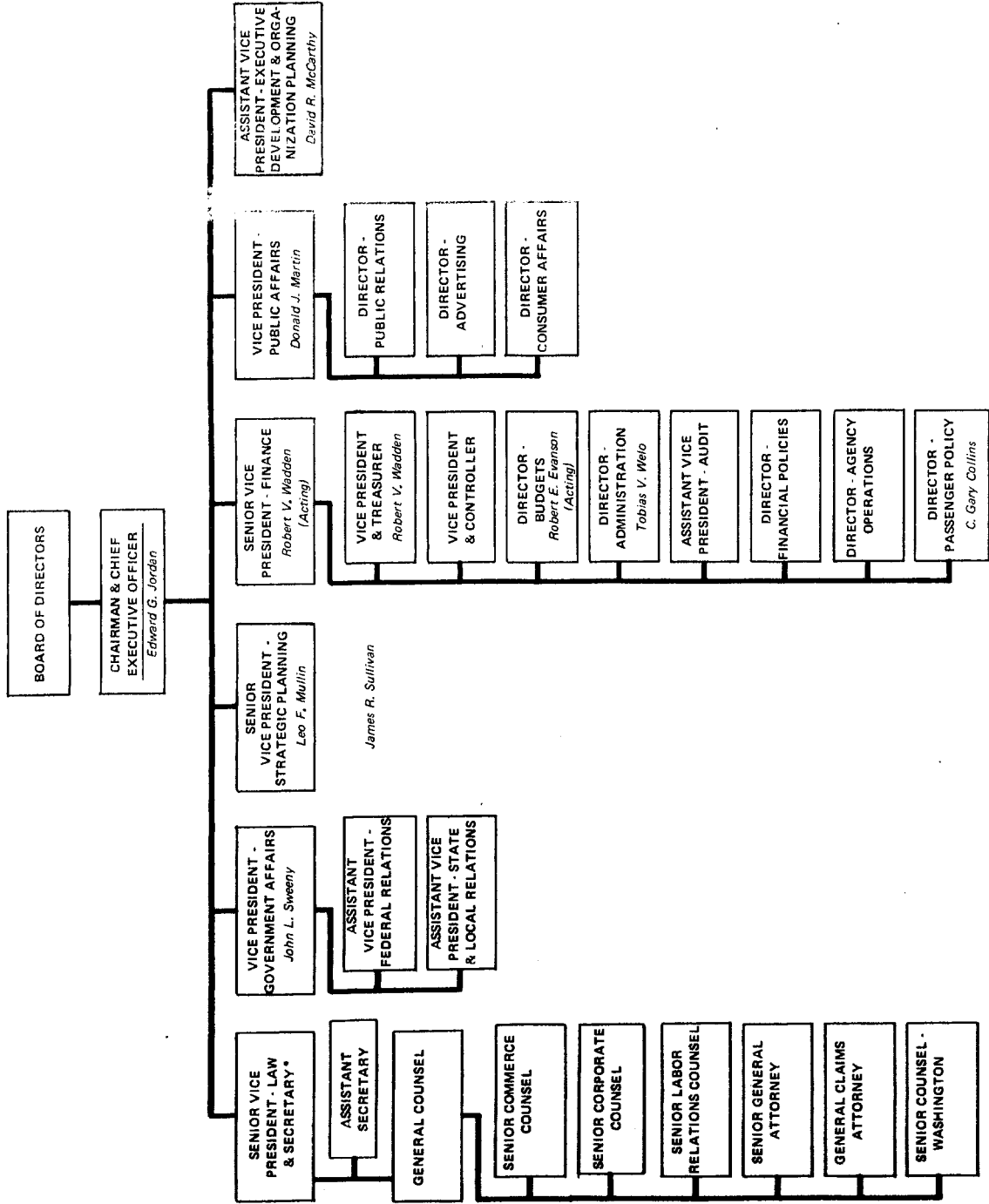
CUNRAIL ACTIVATION PLAN

CRC OPERATING JURISDICTION OF LINES

JURISDICTION	PRV	RD	DV	RG	DV	ST	LINE	CODE	STATIONS	MILE POST	OWN	OPN	CR	PSGR	TRACKAGE	SPC
RD	DV	EA	RE	EA	RE	PA	NAME		FROM TO	FROM TO	OWN	CNT	OP	OPNS	RIGHTS	CND
RD	RD	EA	RE	EA	RE	PA	MUDDY COLLIERY	0381	WEST JCT	0.0	CRC	CRC	F			
RD	RD	EA	RE	EA	RE	PA	MUDDY COLLIERY	0382	SILVERTON	2.0	CRC	CRC	F			
RD	RD	EA	RE	EA	RE	PA	SWARTA COLLIERY	0383	SWATARA JCT	0.0	CRC	CRC	F			
RD	RD	EA	RE	EA	RE	PA	MUNCY IND TRK	0384	MUNCY	0.0	CRC	CRC	F			
RD	RD	EA	RE	EA	RE	PA	RACE & ARCH BR	0387	RACE ST	0.0	CRC	CRC	F			
RD	RD	EA	RE	EA	RE	PA	M'TOWN & H'TOWN	0389	HUMMELSTOWN	0.0	MHRR	CRC	F			
RD	RD	EA	RE	EA	RE	PA	M'TOWN & H'TOWN	0389	MIDDLETOWN	5.4	MHRR	CRC	F			
RD	RD	EA	RE	EA	RE	DE	MARYLAND AVE BR	0391	WILMINGTON	0.0	CRC	CRC	F			
RD	RD	EA	RE	EA	RE	DE	C'TIANA AVE BR	0393	DELAWARE RVR EXT	0.0	CRC	CRC	F			
RD	RD	EA	RE	EA	RE	DE	SO. WALNUT ST BR	0395	DELAWARE RVR EXT	0.0	CRC	CRC	F			
RD	RD	EA	RE	EA	RE	DE	DEL RIVER EXT	0396A	MILL CREEK JCT	0.0	CRC	CRC	F			
RD	RD	EA	RE	EA	RE	DE	DEL RIVER EXT	0396R	WARD	0.0	CRC	CRC	F			
RD	RD	EA	RE	EA	RE	DE	BELLVUE BR	0397	PIGEON POINT	0.0	CRC	CRC	F			
RD	RD	EA	RE	EA	RE	PA	WILLOW & NOBLE BR	0398	HENRY AV	4.5	CRC	CRC	F			
RD	RD	EA	RE	EA	RE	PA	TRENT-PRINCT BR	0399	CALLLOWHILL JCT	0.0	CRC	CRC	F			
RD	RD	EA	RE	EA	RE	NJ			JCT-E TRENTON BR	1.1	CRC	CRC	F			
RD	RD	EA	RE	EA	RE	NJ			LAWERENCEVILLE	3.4	CRC	CRC	F			

**ConRail  
Organization Charts**

CONSOLIDATED RAIL CORPORATION  
CONVEYANCE ORGANIZATION STRUCTURE



\* Secretary may be combined with General Counsel.



**ConRail  
Operations Dept.  
Instructions**

### FREIGHT TRAIN SCHEDULES

ConRail Freight Schedule books are being distributed to all concerned. This book includes all Through and Local Freight Schedules and other useful information.

Transportation Orders will be issued by the Vice President - Transportation concerning changes in Through Freight Schedules. Monthly supplements to the Freight Schedule Book will be distributed about the 15th of each month covering all changes made during the previous month.

### CLASSIFICATION MANUALS

Classification Manuals are being distributed to 161 ConRail guards and to certain foreign carriers.

Transportation Orders will be issued by the Vice President - Transportation concerning changes in the Classification Manuals, as required.

Any questions concerning the use of and/or listing shown in these manuals are to be directed to telephone extension 2288 or 2706, Philadelphia.

### CONSIGNEE CLASSIFICATION LISTS

Consignee Classification lists for the North Jersey Terminal Area, Philadelphia, Vineland, New Jersey, and Croxton, New Jersey are being issued to those yards making classifications for those areas.

### THROUGH AND LOCAL FREIGHT TRAIN OPERATION

Questions pertaining to the operation of Through Freight Trains are to be directed to the Director of Freight Train Operation, Philadelphia extension 1155 or 1156.

Questions pertaining to Local Freight Train Operation or classifications are to be directed to the Manager, Freight Service-Staff Philadelphia, extension 2706 or Assistant Manager-Schedules and Classifications, Philadelphia, extension 2288.

## FREIGHT CAR UTILIZATION AND ASSOCIATED REPORTING

Policy and procedures for freight car utilization and distribution will be issued by the Vice-President-Transportation through the department of Freight Car Utilization.

Pending issuance of further instructions, the policy and procedures set forth in the following publications will apply:

1. C.R.C. Car Distribution Instructions and Information Brochure (March 1976).
2. Freight Car Utilization (P.C.) (June 18, 1975).

Copies of both publications have been distributed to all regional and division car distributors. Additional copies can be obtained through the Director, Freight Car Utilization, Phila.

Mechanized car distribution, through TABS input, will be available on April 1, 1976 on the following properties:

1. Former Penn Central
2. Former P.R.S.L.
3. Former Lehigh Valley
4. Former Central New Jersey

On May 1, 1976, reporting locations on the former Reading Railroad will be added to the TABS network.

The entire ConRail system will be on one computer network with the completion of installations of TABS equipment at locations on the former Erie-Lackawanna by June 1, 1976.

"TABS" (Transportation And Billing System) is used extensively in all freight car distribution and utilization matters.

Detailed instructions as to methods of input are available at all IBM 3735 reporting locations.

Concise aids are available for general distribution as follows:

1. "Classification of Empty Equipment from TABS Enrichment Procedures" (January 1976).
2. "TABS Trace Using Teletype; Model 40 and CRT Devices" (September 1975).
3. "TABS Enrichment Comments"

Copies of these instructions are also available through the Director Freight Car Utilization.

DISPATCHER TERRITORIES  
AND  
IMPLEMENTING GENERAL ORDER

A Regional General Order has been drafted for each Region and Division of each railroad comprising ConRail, designating the lines of that railroad to be operated by the Regions and Divisions of ConRail. The General Orders will also retain in force the Operating Rules, Employee Timetables-including present Timetable Special Instructions, Air Brake, Electrical Operating and all Rules and Instructions pertaining to the operation of trains over the respective lines of the former railroads.

Instructions detailing each existing train dispatcher's district have been prepared on the format of the Final System Plan. All Rules Officers of the various railroads have a copy of their section of this book, which forms the basis for their Regional/Divisional General Order. This format facilitates making any changes in the status of those lines "available for subsidy" or on lines which the actions of solvents are not yet finalized.

In establishing the ConRail Divisional structure, the shifting of certain branches or lines has been necessary between the railroads on April 1 to establish contiguous lines. However, dispatcher control of these lines will not be changed on April 1 until implementing agreements are obtained from the representing organizations. Therefore, the General Order will designate those portions of the new divisions which temporarily will be controlled by a train dispatcher located on another division.

FORMS USED  
IN  
OPERATION OF TRAINS

All forms presently used in controlling the operation of trains on the lines of the various railroads which will become a part of ConRail will be continued in effect, consistent with the Operating Rules and Timetables of the respective railroads. Each form will be identified as a ConRail form applicable to territory on which it is to be used such as Lehigh Valley District, EL District, etc.

These new forms have been ordered and will be delivered in sufficient quantity for distribution prior to and use on April 1. The only exception to the District designation on such forms is the "19 Order". This will be a universal ConRail form which is compatible with the Operating Rules and Timetables in effect on all Districts. Instructions on their use have been disseminated to all Rules Officers to ensure compliance on April 1.

Orders for Timetables and forms, for roads in short supply, have been approved to insure a sufficient supply for 90 days.

LOCOMOTIVE DISTRIBUTION

Each Region will have a Regional Supervisor, Locomotive and Caboose Control in charge of the Regional Power Control Office.

Locomotives to cover all yard and local assignments on each Region will be assigned by the System Power Control office and daily distribution of these will be the responsibility of the Region offices.

All units for road freight service will be distributed by the System Power Control office, the "Blue Room", in Philadelphia.

The yard and local freight locomotive assignments in the revised Division and Regional territories will be furnished to the various Regional offices prior to April 1.

Regional Power meetings will be held following April 1 to review all Regional yard and local locomotive assignments and prepare Regional Power Books, indicating all assignments, class of power required, hours of service, etc.

RAILROAD OPERATING RULES AND PRACTICES  
TESTS AND INSPECTIONS

The Chief Safety Officer of ConRail will file the following with the FRA:

Operating Rules and Timetables.

Program for Operational Tests and Inspections.

Program for Instruction of Employes.

ConRail will conduct operational tests and inspections to determine the extent of compliance by its employes with its Operating Rules, Timetables and Timetable Special Instructions. ConRail will also maintain a record of the date, place and result of each test or inspection must be given to the FRA each year.

A computerized system, referred to as "POSTS" will be placed in immediate use for former Penn Central employes of ConRail. Records for the employes of other railroads in ConRail will be included in this system as soon as certain problems such as duplicate employee numbers can be resolved. Reporting codes have already been assigned to Regions and Divisions. Records of Medical Examinations, instruction on the Book of Rules, Air Brake examinations and promotional dates for all ConRail Train and Engine service personnel will be recorded in this program after the initial base information is assembled.

## RADIO EQUIPMENT AND FREQUENCIES

The assigned radio frequencies of each road have been inventoried. The Penn Central's two road frequencies, which are presently in use throughout the entire ConRail territory, will be adopted by ConRail. They are the only available frequencies that provide clear reception and the best protection against transmission interference. Their adoption will require a minimum change in crystals for locomotives, base stations and portables.

Frequencies presently assigned in various passenger commuter areas will not be changed. This will help relieve transmission congestion in these areas. These lines are used for both freight and passenger, base stations will monitor both the freight and the passenger frequency.

Frequencies presently assigned to terminal yard operations, Maintenance of Way and Signals, Maintenance of Equipment, and Police, will not be changed at this time.

Crystals have been ordered for changing the frequency on locomotives and base stations, which will be capable of use elsewhere if basis or conditions of original order change. Arrangements for crystals for portable sets will be made after an inventory of such sets is completed.

## OPERATION AND JURISDICTIONAL CHANGES

The operating rules in effect, the maximum authorized speed, and the operating jurisdiction or Division Posts on any line will not be changed without the written approval of the Senior Vice President Operations.

## SAFETY DEPARTMENT RESPONSIBILITIES AND FUNCTIONS

The Chief Safety Officer for ConRail will file monthly reports of "Accident/Incidents" in compliance with 49 CFR 225 (Railroad Accidents; Reports and Classification) and of Hours of Service violations in compliance with Public Law 91-169.

To insure accurate and prompt reporting of Accident/Incidents, a Manual for the Preparation of Accident/Incident Reports has been compiled and distributed to each road's Reporting Officer who is presently instructing the affected people in its use.

Reports of accidents submitted to the various State Regulatory Agencies are to be duplicates of the reports required by the FRA and will be submitted direct to those Agencies by each Division Superintendent.

It is the responsibility of the Division Superintendent or his designated representative to make phone or telegraphic reports to the FRA for fatalities or serious train accidents.

Monthly statistical reports showing the frequency and severity of employee injury/illness occurrences will be furnished to the President, his staff, Department heads and General Managers. Train accidents reportable to the FRA, those which cost in excess of \$1,750, will also be compiled on a monthly basis and distributed to those officers.

Files and records for train accidents involving damage under \$1,750 are to be maintained on the Divisions.

All personal injuries and train accidents will be promptly investigated to determine circumstances and cause. The General Manager will designate the proper officers to conduct the investigation including the taking of necessary statements. Safety and Operating Rules Officers will monitor accident investigations and make an evaluation of the circumstances in the light of Safety and Operating Rules.

Close liaison with the Claims Department will be required in the investigation of any accident which may result in law suits against the Company.

Safety Rules for each department, currently in effect on the various railroads, will remain in effect on those lines operated by ConRail pending issuance of further instructions. The program for "Safety Rule Observations for Accident Prevention" (PC-CT990) will be placed in effect on all lines, utilizing available training material.

Billing of insurance companies for reimbursement of ConRail for expenses of treating injured employees will be handled by the office of the Chief Safety Officer. ( On some of the railroads this was previously a function of the Claims and Medical Departments. ) Instructions have been issued to Safety department personnel on the preparation of standardized forms for this purpose.

## PASSENGER OPERATIONS

All passenger trains operated by the various railroads will continue to be operated by ConRail on the present schedules on April 1, until otherwise changed.

All passenger tariffs of the various railroads will be adopted by ConRail. All fare structures will remain the same on April 1.

The existing ticket stock of the various railroads will continue to be used on April 1, until new ConRail tickets are available with the following exceptions:

Penn Central, 10-trip strip tickets in Philadelphia area\*

Reading RR, 10-trip strip tickets in Philadelphia area\*

CRR of NJ, 10-trip convenience tickets

Erie Lackawanna, 12-trip and 20-trip coupon tickets, now in use will be replaced by former EL punch type 12-trip and 20-trip tickets sold by ConRail starting April 1.

\* New ConRail 10-trip strip tickets will replace these tickets in the Philadelphia area.

## STATION DEPARTMENT

The following instructions relative to Station activities and the implementation of FACT operations has been distributed to all FACT terminals for use on April 1.

"Supplement 13 to Official List of Open and Prepaid Stations".

This reflects changes to ConRail in Geographical Section.

"ConRail FACT Training Manual for Standardization of Station Procedures".

"Re-Alignment of Field Terminals and FACT Terminals".

This lists waybilling points prior roads and volumes.

"Alphabetical List of FACT Training Locations"

(Locations not presently under FACT Station System.)

A diagram of FACT terminal locations and a list of FACT Training Coordinators who will be available to assist in resolving questions or problems relative to Station procedures and the implementation of FACT operations is included herein.



FACT TRAINING COORDINATORS

The following personnel will assist in resolving questions relative to station functions and the implementation of FACT operations.

Central of New Jersey

W. J. Savino, Supt. Agent  
CNJ - 405 Division St.  
Elizabethport, N.J. 07207  
P. O. Box 675  
Phone: CNJ Opr. Newark  
Bell: (201) 352-7500

J. A. Kelly, Asst. Supt. Stations  
Penn Central, 466 Lexington Avenue  
New York, New York  
Phone: Tel.Cent. (221) 3479  
Bell: (212) 340-3000  
Home: (914) 245-3882

Erie Lackawanna

Don R. Hankins, Dir. Car-  
Utilization, EL -  
805 Republic Bldg.  
Cleveland, Ohio

Bell: (216) 623-3535

R. Brannon, Asst. Supt. Stations  
Penn Central - 31 E. Georgia Ave.  
Indianapolis, Ind.  
Phone: Tel.Cent. (752) 5613  
Bell: (317) 267-5613  
Home: (317) 243-6314

Lehigh Valley

John P. Duffy, Supt. Stations  
LV - Bethlehem Engine Terminal  
415 Brighton St.  
Bethlehem, Pa.  
Phone: Ext. 65  
Bell: (215) 868-1461  
Home: (215) 252-8342

C. T. Call, Asst. Supt. Stations  
Penn Central - 30th Street Sta.  
Philadelphia, Pa.  
Phone: Tel.Cent. (541) 1629  
Bell: (215) EV7-2222  
Home: (215) NE7-6964

New York & Long Branch

(Same as Central of New Jersey)

Pennsylvania Reading Seashore Lines

R. W. Hood, Supervising Agent  
PRSL - Cooper Street  
Woodbury, N.J.  
Phone: 56-205  
Bell: (609) 848-7985  
Home: (609) 931-4242

C. T. Call, Asst. Supt. Sta.  
Penn Central - 30th St. Sta.  
Philadelphia, Pa.  
Phone: Tel.Cent. (541) 1629  
Bell: (215) EV7-2222  
Home: (215) NE7-6964

Reading

L. H. Wiebel, Asst. Supt. Agent  
Reading - Reading Terminal  
12th & Market Streets  
Philadelphia, Pa.  
Phone: Ext. 492  
Bell: (215) WA2-6100  
Home: (215) 855-2092

P. R. Athey, Supvr. FACT Opr.  
Penn Central - 30th St. Sta.  
Philadelphia, Pa.  
Phone: Tel.Cent. (541) 2001  
Bell: (215) EV7-2222  
Home: (717) 755-2166

Ann Arbor

J. W. Von Scio, Asst. Supt. Stations  
Penn Central - Rm. 223 PC Station  
Detroit, Michigan  
Phone: Tel.Cent. (312) 6602  
Bell: (313) 237-0100  
Home: (313) 557-8219

## FREIGHT CLAIMS AND PREVENTION

The Freight Claims and Prevention Department has prepared and issued the following instructions:

- 1) Notice to foreign roads on the furnishing of interline debits.
- 2) A brochure advising all ConRail customers of the changes in the filing of loss and damage claims.
- 3) Notice to the various officers responsible for the preservation of documents essential to the future processing of both pre- and post-conveyance claims.
- 4) Instructions on the transfer of lading damaged in a derailment and the notification of customers.
- 5) Instructions to outside agencies engaged in inspection and prevention work on behalf of ConRail roads on changes in procedures involved in billing.
- 6) Instructions on the use of a uniform ConRail inspection report by agency personnel and the customers.
- 7) Instructions to the Freight Claim Departments of the Erie-Lackawanna and Reading on the forwarding and handling of post-conveyance claims at Buffalo. Lehigh Valley and CNJ claims will be transferred to Buffalo as of conveyance date.
- 8) New Freight Claim Record Directory.
- 9) Instructions on methods to be followed by ConRail to obtain reimbursement from the Estates.
- 10) Instructions to Claim Investigators on the proper handling and accountability of pre-conveyance claims as opposed to post-conveyance claims.
- 11) Instructions to employees on procedures to be followed on answering customer inquiries.

CONRAIL INTERCHANGE CONNECTIONS  
WHICH WILL BE DISCONTINUED WITH THE  
IMPLEMENTATION OF THE FINAL SYSTEM PLAN

<u>State of Illinois</u>		<u>State of Illinois (cont'd)</u>	
<u>Interchange Location</u>	<u>Former Carriers</u>	<u>Interchange Location</u>	<u>Former Carriers</u>
Alton	PC - ICG	Litchfield	PC - NW
Alton	PC - IT	Minier	PC - ICG
Alton	PC - BN	Moroa	PC - ICG
Atlanta	PC - ICG	Morton	PC - ATSF
Cairo	PC - MP	Morton	PC - IT
Decatur	PC - NW	Oakland	PC - NW
Decatur	PC - IT	Robinson	PC - ICG
Decatur	PC - BO	St. Anne	PC - CEI
Decatur	PC - ICG	Sheldon	PC - TPW
De Pue	PC - Milw	Zearing	PC - BN
De Pue	PC - RI	Arthur	PC - CEI
Farmdale	PC - NW	Hillsboro	PC - CEI
Fremont	PC - NW	Ladd	PC - LSBC
Joliet	PC - Milw	<u>State of Indiana</u>	
Joliet	PC - RI	<u>Interchange Locations</u>	<u>Former Carriers</u>
Joliet	PC - ATSF	Auburn Jct.	PC - BO
Joliet	PC - ICG	Beeson Bolivar	PC - NW
Joliet	PC - EJE	Cambridge City	PC - EL
Ladd	PC - CNW	Clay City	PC - LN
Ladd	PC - Milw	De Long	PC - EL
Ladd	PC - BN		
Litchfield	PC - BN		

## DISCONTINUED INTERCHANGES

B-14

State of Indiana (cont'd)

<u>Interchange Location</u>	<u>Former Carriers</u>
Denver	PC - NW
Effner	PC - TPW
Ellwood	PC - NW
Griffith	EL - EJE
Hammond	EL - EJE
Hammond	EL - ATSF (IHB-BOCT) VIA
Hammond	EL - BO (IHB-BOCT)
Hammond	EL - BN (IHB-BOCT)
Hammond	EL - CO (BOCT-IHB)
Hammond	EL - CEI (IHB)
Hammond	EL - CIW (IHB-BOCT)
Hammond	EL - CNW (IHB-BOCT)
Hammond	EL - RI (IHB-BOCT)
Hammond	EL - CSS (IHB-BOCT)
Hammond	EL - CWP (IHB)
Hammond	EL - GTW (IHB-BOCT)
Hammond	EL - ICG (IHB-BOCT)
Hammond	EL - IN (IHB-BOCT)
Hammond	EL - LN (IHB-BOCT)
Hammond	EL - NW (IHB-BOCT)
Hammond	EL - SOO (IHB-BOCT)
Hammond	EL - IHB
Hibbard	PC - NW
Hoover	PC - CO
Huntington	EL - NW

State of Indiana (cont'd)

<u>Interchange Location</u>	<u>Former Carriers</u>
Kewana	PC - CO
Kingsland	EL - NW
Kouts	PC - EL
La Paz Jct.	PC - BO
Lakeville	PC - NW
Monticello	PC - LN
North Judson	PC - EL
North Vernon	PC - BO
Portland	PC - NW
Rochester	EL - NW
Rushville	PC - BO
Rushville	PC - NW
Reynolds	PC - LN
South Whitely	PC - NW
Vincennes	PC - BO
Washington	PC - BO
Wilders	EL - LN
Wolcottville	PC - NW

State of Maryland

<u>Interchange Locations</u>	<u>Former Carriers</u>
Cumberland	PC - BO
Cumberland	PC - WM
Frederick	PC - BO
Keymar	PC - WM

## DISCONTINUED INTERCHANGES

State of Michigan

<u>Interchange Location</u>	<u>Former Carriers</u>
Adrian	PC - DTI
Adrian	PC - NW
Bay City	PC - CO
Bay City	PC - DM
Bay City	PC - GTW
Boyne Falls	PC - BCRR
Charlotte	PC - GTW
Cadillac	PC - AA
Cheboygan	PC - DM
Lapeer	PC - GTW
Mackinaw City (St. Ignace)	PC - SOO
Mackinaw City	PC - SOO
Missaukee Jct.	PC - CLK
Muskegon	PC - GTW
Muskegon	PC - CO
Oxford	PC - GTW
Owassa	PC - GTW
Owassa	PC - AA
Petosky	PC - CO
Reed City	PC - CO
Reese	PC - CO
Rochester Jct.	PC - GTW
Saginaw	PC - CO
Saginaw	PC - GTW

State of Michigan (cont'd)

<u>Interchange Location</u>	<u>Former Carriers</u>
Tecumseh	PC - DTI
Traverse	PC - CO
Vassar	PC - CO

State of New Jersey

<u>Interchange Location</u>	<u>Former Carriers</u>
Jersey City	LV - HBS <sup>VIA</sup> (MI-PC)
Weehawken	EL - HBS

State of New York

<u>Interchange Location</u>	<u>Former Carriers</u>
Dunkirk	PC - EL
Cortland	PC - EL
Falconer	PC - EL
Green Island	PC - DH
Le Roy	PC - EL
Niagara Falls	LV - NW
Niagara Falls	LV - Niagara Falls
Owego	LV - DH
Owego	LV - EL
Oswego	PC - EL
Retsof Jct.	PC - GNWR
Rochester	PC - EL
Stanley	PC - LV
Attica	PC - EL

## DISCONTINUED INTERCHANGES

B-16

<u>State of Ohio</u>		<u>State of Ohio (cont'd)</u>	
<u>Interchange Location</u>	<u>Former Carriers</u>	<u>Interchange Location</u>	<u>Former Carriers</u>
Arcanum	PC - BO	Sherwood	PC - BO
Bellevue	PC - NW	Sycamore	PC - ACY
Bowerston	PC - NW	Troy	PC - BO
Burgoon	PC - NW	Valley Jct.	PC - BO
Braceville	PC - EL	Wash. Crt. House	PC - BO
Cecil	PC - NW	Wash. Crt. House	PC - DTI
Cambridge	PC - BO	St. Mary's	PC - NW
Celina	PC - NW	<u>State of Pennsylvania</u>	
Clyde	PC - NW	<u>Interchange Location</u>	<u>Former Carriers</u>
Coldwater	PC - NW	Brockway	EL - BO
Circleville	PC - NW	Columbia	PC - RDG
Fostoria	PC - NW	Foxburg	PC - BO
Fostoria	PC - BO	Franklin	PC - EL
Grosvenor	PC - BO	Gettysburg	RDG - WM
Hamilton	PC - BO	Hydman	PC - BO
Kanauga	PC - CO	Indiana	PC - BO
Latty	PC - NW	Kobuta	PC - PLE
Lima	PC - EL	Martins Creek	PC - LNE
Martel	PC - EL	Milton	PC - RDG
Monroeville	PC - BO	Mount Jewett	EL - BO
Lancaster	PC - CO	New Freedom	PC - STRT
Newton Falls	PC - BO	Newton	PC - LV
Norwalk	PC - NW	Northumberland	PC - EL
Ohio City	PC - NW	Thorton Jct.	PC - NW
Ohio City	PC - EL	Waynesboro	PC - NW
New Washington	PC - ACY		

FUNCTIONS  
OF THE  
POLICE DEPARTMENT

There are certain activities which in the past have routinely or occasionally been handled by the Police Department on certain railroads that will, effective April 1, be handled as follows by ConRail:

1. Fire prevention and protection. To be handled by the Environmental Control Department
2. Freight claims investigation and damage prevention. These activities will be handled by the Freight Claim and Prevention Department.
3. Hazardous material reporting. To be handled jointly by the Operating Department Supervisors and Operating Rules and Accident Control Department.
4. Grade crossing accident investigations. Except to the extent that an initial emergency police response is necessary, The General Claim Department will investigate these accidents.
5. Bridge and tunnel inspections, (in connection with the Department of Defense). The Chief Engineers Office will handle these inspections.
6. Crew hauling. This will be handled through the Transportation Department by using messengers and taxi service wherever required.

It will be the responsibility of the ConRail Police Department to:

1. Protect life, Company property and freight against injury, negligence, malicious mischief, vandalism, sabotage, fire, acts of violence and theft.
2. Prevent and suppress crime; arrest criminal offenders.
3. Investigate criminal violations committed on or against the railroad, its employees or patrons.
4. Preserve peace and order along rights-of-way, at facilities, on trains and during emergency situations.
5. Report Company rule violations or irregularities as observed in the regular course of duties.
6. Conduct such other investigations as required.

When trains, containing high value shipments, are detained in high crime areas, the ConRail Police Department should be notified so that adequate protection can be provided for personnel, cargo and equipment.

Any activities observed within the above listed categories should be reported immediately to the local office of the Captain of Police. If he is unavailable, please telephone the appropriate Regional Superintendent-Police on his 24-hour number as listed below:

NORTHEASTERN REGION

Superintendent-Police  
54 Meadow Street  
New Haven, Conn. 06510

RR Extensions - 2303/2302  
Bell - (203) 497-2300/2301

ATLANTIC REGION

Superintendent-Police  
Penn Station - Exit Concourse  
New York, N.Y. 10001

RR Extensions - 2065/2066/2005  
Bell - (212) 736-3224

METROPOLITAN REGION

Superintendent-Police  
Grand Central Terminal  
New York, N.Y. 10017

RR Extensions - 2725  
Bell - (212) 340-2929

EASTERN REGION

Superintendent-Police  
Room 330 - 30th St. Sta.  
Philadelphia, Pa. 19104

RR Extensions - 3911/3912  
Bell - (215) 594-3911

CENTRAL REGION

Superintendent-Police  
321 Penn Central Station  
Pittsburgh, Pa. 15222

RR Extensions - 2323/2328  
Bell - (412) 471-1813

NORTHERN REGION

Superintendent-Police  
2405 W. Vernor - Room 107  
Detroit, Mich. 48216

RR Extensions - 4701/4741  
Bell - (313) 237-0148

SOUTHERN REGION

Superintendent-Police  
Penn Central Station  
31 E. Georgia St.  
Indianapolis, Ind. 46204

RR Extension - 4073  
Bell - (317) 267-4812

WESTERN REGION

Superintendent-Police  
Union Station - Room 466  
Jackson & Canal Streets  
Chicago, Ill. 60606

RR Extensions - 2855/2856  
Bell - (312) 236-7200 (Ext.2855)

ALTOONA SHOPS

Plant Security  
Altoona, Pa.

RR Extension - 343

On other matters and for further information and assistance, contact  
Asst. Vice President - Security, ConRail Police Headquarters, Room 360 -  
30th Street Station, Philadelphia, Pa. 19104 - telephone (215) 594-3907.

## ENGINEERING DEPT. INSTRUCTIONS &amp; STANDARDS

All Engineering Dept. Instructions and Standards in effect on the former railroads making up ConRail will remain in effect on the lines of those railroads conveyed to ConRail until withdrawn, changed, or superseded.

### M/W DIVISIONAL REPORTS

The following is a list of ConRail reports which must be furnished by division engineering offices to the Information Center-Engineering (ICE) on a periodic basis. Each report is described and the frequency noted. Copies of the reports, sample completed reports and other information can be obtained from the ICE room in Philadelphia at extension 215-594-3333 (Bell) or extension 3333 (Tele-Central).

### DERAILMENT REPORTS

The following forms must be filled out for derailments causes. All reported Maintenance of Way caused derailments for the 24-hour period ending at 7:00 A.M. must be available to the ICE Room by 7:00 A.M. that morning. For irregular cross-level, Form MW-90, the division must telecopy the track measurements to the ICE Room. Information on all other MW caused derailments (Form MW 700-704) will be given to the ICE Room report clerk when he (ICE) calls the division that morning.

- (1) Irregular cross levels - Track Measurement Report (MW-90)
- (2) Broken rail - Broken Rail Report (MW-700)
- (3) Wide gauge - Derailment - Work Sheet Report (MW-701)
- (4) Broken splice bars - Broken Splice Bars (joint bars) Report (MW-702)
- (5) Defective switch - Switch Failure (broken switch point or switch out of adjustment) Report (MW-703)
- (6) Pull apart - Pull-Apart Report (MW-704)

### SLOW ORDERS

Information on changes in slow orders is to be telephoned daily to the ICE room, giving information necessary to fill in all columns in the computerized slow order report (MW-750). The lost time column and route column are assigned by computer. Single tracks are coded "7". Speeds are broken between Passenger, Fast Freight, and Freight. The ICE room should be contacted daily even if there are no changes in the report. Also, annual gross tonnage on the track is to be given to the ICE room.

## T &amp; S PRODUCTION REPORTS

Tie and surfacing gangs are to be recorded on the form marked "Daily Production Report" (MW-710). Detailed information is provided in the instructions dated March 17, 1976 to all division engineers. This report must be telecopied to the ICE room daily no later than 5:00 p.m. on work days. Instructions entitled "Proper Use of Production Report Columns" dated 3/17/76 detail the use of the Production Report.

## RAIL LAYING REPORT BY GANGS

The Rail Laying Report (MW-711) is to be phoned by the rail train supervisor to the ICE room at the end of each work day no later than 7:00 p.m. using the form entitled, "Rail Laying Trains - Daily Report".

## BALLAST CLEANING REPORT

The Ballast Cleaning Report (MW-712) is to be phoned by the division office to the ICE room no later than noon of each day for the preceding 24 hours ending that morning. The report is to be given on the Ballast Cleaning Daily Report.

## RAIL GRINDING REPORT

The Rail Grinding Report (MW-713) is to be phoned no later than noon each day for the preceding 24 hours using the Rail Grinding Work Report.

## SMOOTHING REPORT

The Smoothing Report (MW-714) is to be reported each Friday to the ICE room by telecopier covering a 7-day period ending on Thursday. This report is to be prepared on the Weekly Smoothing Report form. Report is to be received by ICE room not later than 4:00 P.M. on Friday.

## PERSONAL INJURY REPORT

The Telephone Report of Injury (MW-720) is to be telephoned to the ICE room on the same day an injury occurs for those injuries known to be lost time. A report is also to be telephoned to the ICE room promptly if a man with no lost time injury starts losing time. This report does not eliminate normal reporting of injuries to operating divisions.

## DETECTOR CAR REPORTS

The Detector Car Summary Report (MW-730) is to be telephoned to the ICE room at the end of a day's testing by the railroad representative who rides the car. He is to phone the report as soon as he ties up for the night and knows where he will begin work the following day. Report should be received by 6:00 P.M. each night unless the car is still working. All reports must be received not later than 9:00 P.M.

## DEFECTIVE RAIL IN TRACK

The report titled, "Number of Defective Rails in Track" (MW-731) is to be telephoned to the ICE room on the afternoon of occurrence. This report includes the detection and change-out of detected defective rails (by audio gauge or detector car). The report is to be on line by sub-division basis.

## PROGRAM COMPLETION STATEMENT

The Program Completion Statement (MW-740) is completed by each division by the fifth working day of the month following the end of the month of the report. It is to be completed on the program completion statement and telecopied or mailed to the ICE room. Instructions dated March 11, 1975 entitled, "instructions for making Monthly Completion Report" govern this report.

- \* The "Proper Use of Production Report Columns", dated March 17, 1976, refers to the use of numerical state codes. As information, these codes are listed below:

Name

Connecticut.....	01
Delaware.....	02
District of Columbia.....	03
Indiana.....	04
Illinois.....	05
Kentucky.....	06
Maryland.....	07
Massachusetts.....	08
Michigan.....	09
New Jersey.....	10
New York.....	11
Ohio.....	12
Ontario.....	13
Pennsylvania.....	14
Rhode Island.....	15
Virginia.....	16
West Virginia.....	17
Quebec.....	18

## REGIONAL SIGNAL DEPARTMENT REPORTS

The following reports must be supplied by Regional Signal Departments:

1. Telephone report of train accident, alleged false proceed signals or unusual occurrences causing substantial delay to traffic to 594-2839.
2. Daily morning report of signal delays occurring during previous 24 hours to be available at 7:00 AM and reasons for delay.
3. Monthly report of false restrictive signal delays.
4. Monthly report of vandalism damage.
5. Copies of all DOT violations to be forwarded immediately on receipt.
6. Quarterly report on force - SF-102.
7. Quarterly report on status of inspections and tests, C&S-19.
8. Copy of completion report on projects.
9. Status of project material - installation progress.

INSTRUCTIONS FOR HANDLING OF WIRE, PIPE AND PRIVATE GRADE  
CROSSINGS TO OCCUPY PROPERTIES OF CONRAIL

1. All applications for such occupations will be submitted by letter to the Chief Engineer, ConRail, Room 600, 6 Penn Center Plaza, Philadelphia, Pa. 19104. The letter will outline the name of the individual, corporation or municipality desiring the occupancy, the complete mailing address of applicant, the title of the person who will sign the agreement and the State in which the applicant is incorporated.
2. Along with the letter, the applicant will be required to submit at least eight (8) copies of all construction plans and three (3) copies of specifications and computations concerning the proposed occupancy.
3. After the application is received, it will be indexed and the railroad location determined from valuation maps by the Chief Engineer. Plans will be reviewed to assure compliance with CE-8 (pipe) and CE-4 (wire) specifications. Where necessary, a special review will be conducted to determine the integrity from a structural standpoint for a larger facility to be installed.
4. After final engineering approval, an agreement will be prepared, using the Eastern Railroad Association Rental Schedule, effective September 1, 1971, as a basis for charges. Such agreements will be sent to the local appropriate Legal office for approval as to form.
5. The Agreement will then be forwarded to the applicant in duplicate for his execution and return to the Chief Engineer who will arrange for signature on behalf of ConRail and, when required, forward the document to any leased line involved for their approval and execution. After this step is completed, the fully executed original will be filed with the Secretary of ConRail and the duplicate sent to the applicant for his file. ConRail field forces will be notified by the Chief Engineer to protect inspection during construction.

**ConRail  
General Instructions**

## CONRAIL TELEPHONE SERVICE

The following pages provide general information of the telephone service available over ConRail telephone circuits.

Copies of the telephone directories of each of the various railroads have been reprinted and a limited number have been distributed to principal System Headquarters and Regional Offices.

A consolidated ConRail telephone directory will be issued at a later date.

Questions relative to the availability of telephone directories or other telephone problems of a general nature should be directed to the Director, Communication Services, Philadelphia, Extension 1448.

# CONRAIL

## TELEPHONE DIAL SYSTEM

April 1, 1976

ConRail's telephone network enables any ConRail road PBX extension user to call all other ConRail PBX extensions. (A PBX extension is a telephone connected to a Private Branch Exchange). The operator list below, the attached Telephone Dial Charts and the TeleCentral map on the last sheet are furnished to assist you in using our network.

The charts are the primary means for determining the digits to be dialed to call between PBXs. Dial codes are found by looking down the left hand column until you reach the location you are calling from and then across the chart until you reach the code shown at the intersection with the column headed by the name of the PBX being called.

The map is a graphical representation of the network which also can be used to establish call routing.

1. Where a "tie line" (drawn as a dashed line), or a series of tie lines, connects your PBX to the one being called, use the dial code indicated at the nearer end(s) of the tie line(s).
2. When calling to a PBX not connected to your PBX by a tie line, or series of tie lines, dial the TeleCentral access code (shown on the solid TeleCentral line) to reach the TeleCentral network. After the dial tone, continue by dialing the TeleCentral network number shown within the circle representing the PBX being called. If a TeleCentral line is not shown connected to your PBX, use a tie line to the nearest PBX with one, dial the TeleCentral access code from that PBX, wait for dial tone and dial the TeleCentral network number.

Communications Services  
Philadelphia, PA

### CONRAIL TELEPHONE OPERATOR SWITCHBOARDS

<u>Attended PBX</u>	<u>Hours Open</u>	<u>TeleCentral Code</u>
Altoona, PA	0800 - 1700, M-F	543-0
Bethlehem, PA	0800 - 1700, M-F	2241-011
Chicago (Un. Sta.), IL	24 hours, 7 days @	551-0
Detroit, MI	0700 - 1900, M-F	321-0
Elizabeth, NJ	0700 - 1730, M	2219-011
	0700 - 1830, Tu-F	
	0700 - 1530, Sa	
Hoboken (Term. Bldg.), NJ	0800 - 1730, M-F	2512-011
Indianapolis, IN	0700 - 1750, M-F @	752-0
New Haven, CT	0700 - 2300, M-F	235-2400
New York (Penn Sta), NY	24 hours, 7 days *	421-0
New York (GCT), NY	0800 - 1650, M-F	221-0
Philadelphia (30th St), PA	24 hours, 7 days *	541-0
Philadelphia (Reading Term.), PA	0800 - 1700, M-F	54176-01
Pittsburgh (Penn Sta.), PA	24 hours, 7 days **	521-0
St. Louis (TRRA), MO	0700 - 1750, M-F @	652-0
Syracuse (DeWitt), NY	24 hours, 7 days	231-0
Williamsport, PA	0300 - 1700, M-F	522-0

@ Central time; all others are Eastern

\* Except 0040 - 0050, 0300 - 0330 and 0530 - 0540 hours

\*\* Except 0300 - 0320, 1900 - 1920 and Sat/Sun 1200 - 1220

# CONSOLIDATED RAIL CORPORATION



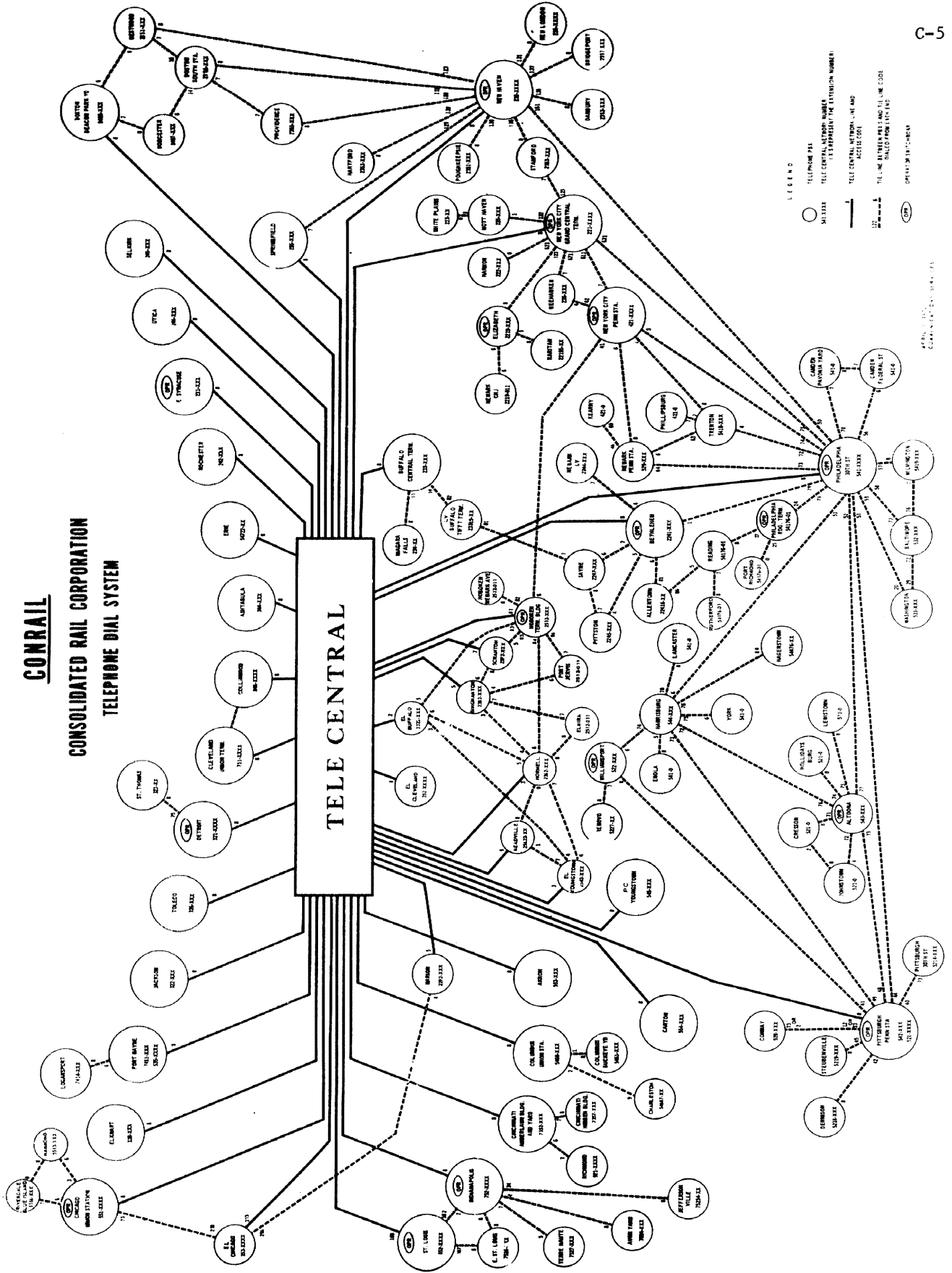
CONRAIL TELEPHONE DIAL CHART #2

From	To	EL Binghamton	EL Buffalo	EL Chicago	EL Cleveland	EL Elmira	EL Hoboken Newark Ave	EL Hoboken Term Bldg	EL Hornell	EL Marion	EL Meadville	EL Port Jervis	EL Scranton	EL Youngstown
Ann Arbor (Moss)	8/2382- xxx	8/2322- xxx	8/2322- xxx	8/253- xxx x	8/252- 011	8/2512- 011	8/2512- 011	8/2512- xxx	8/2362- xxx	8/2292- xxx	8/25622- xx	8/2512-011	8/2392- xxx	8/2542- xxx
Central of New Jersey (Elizabeth)	88/2382- xxx	88/2322- xxx	88/2322- xxx	88/253- xxx x	88/252- 011	88/2512- 011	861141- 82-xxx	861141- 82-xxx	88/2362- xxx	88/2292- xxx	86/25622- xx	88/2512-011	88/2392- xxx	86/2542- xxx
Central of New Jersey (Newark)	688/2382- xxx	688/2322- xxx	688/2322- xxx	688/253- xxx x	688/252- 011	688/2512- 011	6861141- 82-xxx	6861141- 82-xxx	688/2362- xxx	688/2292- xxx	688/25622- xx	688/2512-011	688/2392- xxx	686/2542- xxx
Central of New Jersey (Barlifer)	888/2382- xxx	888/2322- xxx	888/2322- xxx	888/253- xxx x	888/252- 011	888/2512- 011	8861141- 82-xxx	8861141- 82-xxx	888/2362- xxx	888/2292- xxx	888/25622- xx	888/2512-011	888/2392- xxx	888/2542- xxx
Erie Lackawanna (Binghamton)	64-xxx	35-xxx	5/253- xxx x	5/252- xxx x	7-xxx	4582- xxx	582-xxx	5-xxx	3-xxx	5/2292- xxx	30-xx	6-xx	4-xxx	31-xxx
Erie Lackawanna (Buffalo)	213/2382- xxx	213/2322- xxx	213/232- xxx x	213/252- xxx x	213/2512- 011	213/2512- 011	213/2512- 011	213/2512- xxx	213/2362- xxx	216-xxx	213/25622- xx	213/2512-011	213/2392- xxx	213/2542- xxx
Erie Lackawanna (Chicago)	8/2382- xxx	8/2322- xxx	8/253- xxx x	8/252- xxx x	8/2512- 011	8/2512- 011	8/2512- 011	8/2512- xxx	8/2362- xxx	8/2292- xxx	8/25622- xx	8/2512-011	8/2392- xxx	8/2542- xxx
Erie Lackawanna (Cleveland)	7-xxx	8-xxx	8681/253- xxx x	8681/252- xxx x	8682-xxx	8682-xxx	8682-xxx	86-xxx	8-xxx	8681/2292- xxx	80-xx	76-xx	74-xxx	87-xxx
Erie Lackawanna (Elmira)	884-xxx	883-xxx	881/253- xxx x	881/252- xxx x	884-8- xxx	884-8- xxx	884-xxx	8-xxx	884-xxx	881/2292- xxx	884-0- xx	886- xx	885- xx	8847- xxx
Erie Lackawanna (Hoboken-Newark Ave)	85- xxx	83-xxx	81/253- xxx x	81/252- xxx x	848- xxx	848- xxx	82-xxx	8-xxx	84-xxx	81/2292- xxx	84-0- xx	86-xx	85-xxx	847-xxx
Erie Lackawanna (Hoboken-Term Bldg)	4-xxx	5-xxx	3/253- xxx x	3/252- xxx x	8-xxx	8-xxx	682-xxx	6-xxx	8-xxx	3/2292- xxx	0-xx	46-xx	44-xxx	7-xxx
Erie Lackawanna (Marion)	5/2382- xxx	5/2322- xxx	4/xxx x	5/252- xxx x	5/2512- 011	5/2512- 011	5/2512- 011	5/2512- xxx	5/2362- xxx	9/2292- xxx	5/25622- xx	5/2512-011	5/2392- xxx	5/2542- xxx
Erie Lackawanna (Meadville)	9/2382- xxx	14-xxx	9/253- xxx x	9/252- xxx x	08-xxx	08-xxx	0682- xxx	06-xxx	0-xxx	9/2292- xxx	046-xx	044-xxx	044-xxx	1-xxx
Erie Lackawanna (Port Jervis)	6-xxx	783-xxx	781/253- xxx x	781/252- xxx x	67-xxx	67-xxx	782-xxx	7-xxx	63-xxx	781/2292- xxx	630-xx	64-xxx	64-xxx	637-xxx
Erie Lackawanna (Scranton)	8-xxx	583-xxx	7/253- xxx x	7/252- xxx x	87-xxx	87-xxx	582-xxx	5-xxx	83-xxx	7/2292- xxx	830-xx	86-xx	86-xxx	837-xxx
Erie Lackawanna (Youngstown)	64-xxx	4-xxx	3/253- xxx x	3/252- xxx x	68-xxx	68-xxx	6882- xxx	66-xxx	6-xxx	3/2292- xxx	7-xxx	646-xx	644-xxx	818/2542- xxx
Lehigh Valley (Allentown)	818/2382- xxx	818/2322- xxx	818/253- xxx x	818/252- xxx x	818/2512- 011	818/2512- 011	818/2512- 011	818/2512- xxx	818/2362- xxx	818/2292- xxx	818/25622- xx	818/2512-011	818/2392- xxx	818/2542- xxx
Lehigh Valley (Bethlehem)	8/2382- xxx	8/2322- xxx	8/253- xxx x	8/252- xxx x	8/2512- 011	8/2512- 011	8/2512- 011	8/2512- xxx	8/2362- xxx	8/2292- xxx	8/25622- xx	8/2512-011	8/2392- xxx	8/2542- xxx
Lehigh Valley (Buffalo)	828/2382- xxx	828/2322- xxx	828/253- xxx x	828/252- xxx x	828/2512- 011	828/2512- 011	828/2512- 011	828/2512- xxx	828/2362- xxx	828/2292- xxx	828/25622- xx	828/2512-011	828/2392- xxx	828/2542- xxx
Lehigh Valley (Newark)	78/2382- xxx	78/2322- xxx	78/253- xxx x	78/252- xxx x	78/2512- 011	78/2512- 011	78/2512- 011	78/2512- xxx	78/2362- xxx	78/2292- xxx	78/25622- xx	78/2512-011	78/2392- xxx	78/2542- xxx
Lehigh Valley (Pittston)	68/2382- xxx	68/2322- xxx	68/253- xxx x	68/252- xxx x	68/2512- 011	68/2512- 011	68/2512- 011	68/2512- xxx	68/2362- xxx	68/2292- xxx	68/25622- xx	68/2512-011	68/2392- xxx	68/2542- xxx
Lehigh Valley (Soyre)	68/2382- xxx	68/2322- xxx	68/253- xxx x	68/252- xxx x	68/2512- 011	68/2512- 011	68/2512- 011	68/2512- xxx	68/2362- xxx	68/2292- xxx	68/25622- xx	68/2512-011	68/2392- xxx	68/2542- xxx
Penn Central (New York-GCT)	8/2382- xxx	8/2322- xxx	8/253- xxx x	8/252- xxx x	8/2512- 011	8/2512- 011	8/2512- 011	8/2512- xxx	8/2362- xxx	8/2292- xxx	8/25622- xx	8/2512-011	8/2392- xxx	8/2542- xxx
Penn Central (NY-Penn Sta)	78/2382- xxx	78/2322- xxx	78/253- xxx x	78/252- xxx x	78/2512- 011	78/2512- 011	78/2512- 011	78/2512- xxx	78/2362- xxx	78/2292- xxx	78/25622- xx	78/2512-011	78/2392- xxx	78/2542- xxx
Penn Central (Philadelphia)	8/2382- xxx	8/2322- xxx	8/253- xxx x	8/252- xxx x	8/2512- 011	8/2512- 011	8/2512- 011	8/2512- xxx	8/2362- xxx	8/2292- xxx	8/25622- xx	8/2512-011	8/2392- xxx	8/2542- xxx
Penn Central (Washington)	208/2382- xxx	208/2322- xxx	208/253- xxx x	208/252- xxx x	208/2512- 011	208/2512- 011	208/2512- 011	208/2512- xxx	208/2362- xxx	208/2292- xxx	208/25622- xx	208/2512-011	208/2392- xxx	208/2542- xxx
Penn Central (Other)	TeleCentral 2382-xxx	TeleCentral 2322-xxx	TeleCentral 253-xxxx@	TeleCentral 252-xxxx	TeleCentral 2512-011	TeleCentral 2512-011	2512-011	2512-xxx	TeleCentral 2362-xxx	TeleCentral 2292-xxx	TeleCentral 25622-xx	TeleCentral 2512-011	TeleCentral 2392-xxx	TeleCentral 2542-xxx
Reading (Philadelphia)	248/2382- xxx	248/2322- xxx	248/253- xxx x	248/252- xxx x	248/2512- 011	248/2512- 011	248/2512- 011	248/2512- xxx	248/2362- xxx	248/2292- xxx	248/25622- xx	248/2512-011	248/2392- xxx	248/2542- xxx
Reading (Port Richmond)	08/2382- xxx	08/2322- xxx	08/253- xxx x	08/252- xxx x	08/2512- 011	08/2512- 011	08/2512- 011	08/2512- xxx	08/2362- xxx	08/2292- xxx	08/25622- xx	08/2512-011	08/2392- xxx	08/2542- xxx
Reading (Reading)	88/2382- xxx	88/2322- xxx	88/253- xxx x	88/252- xxx x	88/2512- 011	88/2512- 011	88/2512- 011	88/2512- xxx	88/2362- xxx	88/2292- xxx	88/25622- xx	88/2512-011	88/2392- xxx	88/2542- xxx
Reading (Rutherford)	888/2382- xxx	888/2322- xxx	888/253- xxx x	888/252- xxx x	888/2512- 011	888/2512- 011	888/2512- 011	888/2512- xxx	888/2362- xxx	888/2292- xxx	888/25622- xx	888/2512-011	888/2392- xxx	888/2542- xxx

See notes on the previous page.

# CONRAIL

## CONSOLIDATED RAIL CORPORATION TELEPHONE DIAL SYSTEM



PHILADELPHIA  
CONRAIL TELEPHONE DIAL SYSTEM

## PASS PRIVILEGES

The passes of the various railroads which ConRail employees now possess will continue to be honored and provide the same rights and privileges on passenger trains operated over the lines of the former railroad which issued them.

## LABOR AGREEMENTS

On April 1, ConRail will assume all labor agreements with the various crafts as if it were signatory thereto, except to the extent they have been changed by implementing agreements.

Any questions regarding the application or interpretation of such agreements should be directed to the local Labor Relations personnel who are familiar with them.

## LAW DEPARTMENT

ConRail legal matters pertaining to the various lines will be directed, on April 1, to the same law offices which handled comparable matters prior to that date unless otherwise advised.

LEASING OF VEHICLES

Requirements for vehicles of the following System departments will be determined by the officer in charge of those departments.

Sales (incl. Real Estate)	Business Systems
Marketing	System Maintenance Shops (ME)
Materials & Stores	System Maintenance Shops (MW)

Vehicle requirements for the following departments will be determined by the General Managers subject to review by System Officer in charge of those departments:

Security	Maintenance of Equipment
Transportation	Headquarters (Reg., Div.)
Maintenance of Way	

On April 1, ConRail will assume, the leases for vehicles from Excelsior Truck Leasing Co. and other leasing companies which have been properly authorized by the appropriate officer of the various railroads and have been designated for assignment to ConRail.

The Department Officers and General Managers are responsible for providing necessary information and/or taking necessary action as listed below:

1. Advise Manager, Company Vehicles of requirements that cannot be filled on April 1 with vehicles on hand.
2. Prior to April 1, remove all vehicles from lines being conveyed to profitable railroads and from light density lines that will not be operated by ConRail. Particular attention should be given to those areas where there are many such lines. Surplus vehicles must be returned to one of the field offices of Excelsior Truck Leasing Company or the Company from whom leased. Special arrangements will be made for disposition of surplus vehicles at off-line Sales Offices.
3. As soon as possible, but before May 1, 1976, a thorough survey is to be made of all vehicles on hand and a detailed analysis made of requirements, taking into consideration consolidation and rearrangement of forces and cessation of line operation. Surplus vehicles and requirements for additional vehicles must be reported currently. Surplus vehicles which are in operable condition will be used to replace worn-out vehicles at other locations at the direction of Manager Company Vehicles.

ConRail's policy and procedures for management of the fleet of vehicles will be communicated when completed.

## PUBLIC AFFAIRS

### I. Introduction

The ConRail Public Affairs Department, with but one exception, will be centralized at Six Penn Center Plaza, Philadelphia, effective April 1. The main phone number will be (Area Code 215) 594-3121.

### II. Function

The Public Affairs Department is ConRail's direct interface with many of its constituencies and has a secondary relationship with most others.

Its primary function include press and public relations, legislative, management and employee communications; editorial, audio-visual and graphic services; financial and community relations; and research and information services.

### III. Relationship with Operating Department

The primary source of information on ConRail Freight Operations for the Public Affairs Department - 24 hours per day - will be the "Blue Room" at Six Penn Center. The staff there will furnished with a duty roster of public Affairs personnel, showing names and home phone numbers to provide for the handling of unusual incidents after normal working hours, on weekends and holidays.

Regional and divisional offices are encouraged to communicate directly with the Public Affairs staff on other - non operating-matters which require public affairs handling, such as press queries and interview requests, railroad buffs, requests for speakers, employee communications, and community relations program.

## GASOLINE CREDIT CARDS

Gasoline credit cards have been ordered in the name of Consolidated Rail Corporation (ConRail) for use on and after April 1, 1976 on the rail properties of the respective companies that have been conveyed to ConRail.

The cards have been ordered with the same information that is shown on the existing cards, from the same oil company and in the same quantity that was reported in the survey taken early February. The cards have been consigned to the following officers for distribution to the appropriate using department.

P. C. Dutcher - Central Railroad of New Jersey  
G. M. O'Brien - Erie Lackawanna Railway Company  
G. W. Kaswinkel - Lehigh Valley Railroad Company  
R. E. Blosser - Pennsylvania Reading Seashore Lines  
E. H. Follweiler - Reading Company  
F. T. Smith - The Indianapolis Union Railway Company  
W. J. Lach - Penn Central Transportation Company

It is important that when the cards are received and distributed they be protected from being used before April 1.

PREPARATION OF MD-40  
"REQUEST FOR MEDICAL SERVICE"

The following abbreviated codes will be used in preparation of MD-40 "Request for Medical Service".

The specific code to be used will be that of the employee's former employer or in the case of any new employee, the former line on which he is working.

AAR CODE ABBREVIATION FOR CONRAIL PROPERTIES

<u>Code</u> <u>Abbr.</u>	<u>Road Haul Carriers</u>
AA	Ann Arbor Railroad Company
CNJ	Central Railroad Company of NJ
EL	Erie Lackawanna Railroad
LHR	The Lehigh and Hudson River Railway Company
LNE	Lehigh and New England Railway Company
LV	Lehigh Valley Railroad Company
PC	Penn Central Transportation Company
PRSL	Pennsylvania-Reading Seashore Lines
RR	Raritan River Rail Road Company
RDG	Reading Company
	<u>Short Line Junction Settlement Carriers</u>
IRN	Ironton Railroad Company
PAUT	Pennsylvania and Atlantic Railroad Company
WHN	Wharton and Northern Railroad Company
	<u>Switching Carriers</u>
CRI	The Chicago River and Indiana Railroad Company
IU	Indianapolis Union Railway Company
MHM	Mount Hope Mineral Railroad Company
	<u>Operating Company</u>
NYLB	New York & Long Branch Railroad Company

IMPORTANT: SUPERVISOR READ CAREFULLY THE INSTRUCTIONS FOR PREPARATION ON REVERSE SIDE OF LAST COPY.

H2884

<b>CONSOLIDATED RAIL CORP.</b> MD 40 R4 11-75 PRINTED IN U.S.A.				DATE	
<b>REQUEST FOR MEDICAL SERVICE</b>					
PRESENT EMPLOYEES. PLEASE NOTE: EXAMINATIONS OF THIS TYPE ARE PERFORMED BY APPOINTMENT OR ARRANGEMENT ONLY. EXCEPT IN CASE OF EMERGENCY. IF NO TIME AND DATE HAVE BEEN ENTERED BELOW. MAKE AN APPOINTMENT PROMPTLY BY CONTACTING THE MEDICAL OFFICE WHERE YOU ARE REGULARLY EXAMINED. IF YOU WEAR GLASSES, PLEASE HAVE THEM WITH YOU. IF YOU USE A HEARING AID, WEAR IT. IF YOU CANNOT KEEP AN APPOINTMENT, NOTIFY THE MEDICAL OFFICE PROMPTLY AND ARRANGE FOR ANOTHER ONE.					
PLEASE PRINT ALL INFORMATION BELOW					
LOCATION OF MEDICAL DEPT. OR NAME AND ADDRESS OF EXAMINING PHYSICIAN <b>M</b> <b>1</b>				APPOINTMENT (TIME & DATE)	
NAME (LAST, FIRST, MIDDLE) AND HOME ADDRESS, CITY AND STATE				HOME PHONE NO.	
SOCIAL SECURITY NO.		EMPLOYEE NO. 2           7		PRESENT OCCUPATION (BE SPECIFIC)	
				DEPARTMENT	
				DIVISION OR SYSTEM OFFICE	
IMMEDIATE SUPERVISOR AND TITLE			SUPERVISOR MAILING ADDRESS		PHONE NO. (R.R.)
12-13 <b>RDG</b> CHECK (X) ONE TYPE OF EXAMINATION <input type="checkbox"/> (10) PRE-EMPLOYMENT <input type="checkbox"/> (08) PERIODIC-REGULAR <input type="checkbox"/> (09) PERIODIC-SPECIAL <input type="checkbox"/> (12) RETURN FROM FURLOUGH <input type="checkbox"/> (14) RETURN FROM NON OCCUPATIONAL DISABILITY <input type="checkbox"/> (15) RETURN FROM OCCUPATIONAL DISABILITY <input type="checkbox"/> OTHER EXPLAIN _____					
REMARKS <b>ENTER CONRAIL PROPERTY CODE</b>					
<b>REPORT OF EXAMINATION</b> (TO BE COMPLETED BY EXAMINING PHYSICIAN)				FOR SYSTEM MEDICAL OFFICE USE ONLY	
RESULT OF MEDICAL EXAMINATION <input type="checkbox"/> (Q) QUALIFIED <input type="checkbox"/> (N) NOT QUALIFIED		FOR OCCUPATION EFFECTIVE DATE		COLS. CODE 23-25 26 27-29	
<input type="checkbox"/> TO BE RE-EXAMINED IN 15-16 MONTHS.		<input type="checkbox"/> MUST USE CORRECTIVE GLASSES			
IF EMPLOYEE RETURNING FROM ABSENCE DUE TO ALLEGED DISABILITY			FIRST DATE NOT WORKED FULL TIME IF ALLEGED DISABILITY DUE TO INJURY ON DUTY, GIVE DATE AND LOCATION INJURY OCCURRED		
COMMENTS PERTAINING TO HEARING AIDS, COLOR VISION, CONTACT LENS ETC.					
MONTH DAY YEAR 17 DATE OF EXAMINATION		ADDRESS		SIGNATURE OF EXAMINING PHYSICIAN	

STOCK INTERESTS DESIGNATED TO CRC

<u>NAME OF FIRM</u>	<u>% OF STOCK TO BE CONTROLLED BY CRC</u>
Excelsior Truck Leasing Company	100.00
Merchants Despatch Transportation Corporation	100.00
Pennsylvania Truck Lines, Inc.	100.00
Penn Central Communications Corporation	100.00
Philadelphia, Reading and Pottsville Telegraph Company	100.00
Washington and Franklin Railway Company	100.00
Baltimore and Cumberland Extension Railroad Company	100.00
Buffalo Creek Railroad Company	100.00
Nicholas, Fayette and Greenbriar Railroad Company	100.00
Niagara River Bridge Company	100.00
St. Lawrence and Adirondack Railway Company	100.00
Detroit River Tunnel Company	100.00
Raritan River Rail Road Company	100.00
Canada Southern Railway Company	71.51
Indiana Harbor Belt Railroad Company	51.00
Detroit Terminal Railroad Company	50.00
Akron & Barberton Belt Railroad Company	50.00
Lake Erie and Eastern Railroad Company	50.00
Pittsburgh, Chartiers and Youghiogheny Railroad Company	50.00
Lakefront Dock and Railroad Terminal Company (option)	50.00
Toledo Terminal Railroad Company	42.87
Monongahela Railway Company	33.33
Peoria & Pekin Union Railway Company	25.64
Calumet Western Railroad Company	25.00
Fruit Growers Express Company	23.52
Chicago and Western Indiana Railway Company	20.00
Belt Railway Company of Chicago	15.38
Terminal Railroad Association of Saint Louis, Inc.	12.50
Trailer Train Company	9.76
Illinois Terminal Railroad Company	9.00

SPECIAL SITUATIONS

<u>NAME OF FIRM</u>	<u>PERCENT OF STOCK</u>
Washington Terminal Company (Pass to Amtrak)	50.00
Chicago Union Station (Pass to Amtrak)	50.00

APPLICABILITY OF THE HOURS OF SERVICE ACT

A. REGULATIONS:

Public Law 91-169 "Railroad Employee - Hours of Service"

CFR, Volume 49, Part 238 - "Hours of Service of Railroad Employees."

B. APPLICABILITY:

The following ConRail employees are subject to the provisions of these laws and regulations:

- (1) Employees who are actually engaged in or connected with the movement of any train.
- (2) Employees who dispatch, report, transmit, receive or deliver orders pertaining to train movements by the use of telegraph, telephone, radio or other electrical or mechanical device.

C. DEFINITION OF TIME ON DUTY:

- (1) Time on-duty for an employee referred to in B (1) above, begins when he reports for duty and ends when he is actually released from duty, including:
  - (a) Time engaged in or connected with the movement of any train.
  - (b) Any interim period available for rest at a location that is not a designated terminal.
  - (c) Any interim period of less than 4 hours available for rest at a designated terminal.
  - (d) Time spent in deadhead transportation enroute to a duty assignment.
  - (e) Time engaged in any other service for the carrier.

(Note ) Time spent in deadhead transportation by an employee returning from duty to his point of final release shall not be counted as either time off-duty or time on-duty.

- (2) Time on-duty for an employee referred to in B (2) above includes:
  - (a) All time on-duty performing the duties enumerated.
  - (b) All time on-duty in other service for the carrier during the 24 hour period involved.

D. RESTRICTIONS ON HOURS OF SERVICE PERFORMED:

- (1) An employee who performs duties set forth in B (1) above, singularly or collectively, with time on-duty determined as set forth in C (1) above, shall:
  - (a) Not be permitted to be on duty for a period in excess of 12 hours.
  - (b) Not be permitted to go on, or remain on, duty without having had at least 8 hours consecutive hours off-duty during the preceding 24 hours.
  - (c) Have a minimum of 10 consecutive hours off-duty after having been on-duty 12 or more hours.
- (2) An employee performing duties set forth in B (2) above with time on-duty determined as set forth in C (2) above, shall:
  - (a) Not be permitted to be on-duty for more than 9 hours in any 24 hour period at an office where two or more shifts are employed.
  - (b) Not be permitted to be on duty for more than 12 hours in any 24 hour period where only one shift is employed.

E. RECORDS AND REPORTS:

- (1) Records:

Records relative to the activities of employees covered by the Act and of train movements will be maintained and retained as set forth in CFR 49 Part 228, Sections 228.9, 228.11, 228.13, 228.15, and 228.17.

- (2) Monthly Reports of Excess Service:

Each Division Superintendent shall submit a report to the (Director of Safety) of ConRail by the 15th day of each month for any of the following instances that occurred on his Division during the preceding month:

- (a) Any employee who was on duty for periods in excess of those set forth in D (1) & (2) above, or who was on duty without having had periods of rest as set forth therein.
- (b) A negative report will be submitted for any month in which no employees were worked in violation of the provisions of D (1) & (2) above.

F. EXCEPTIONS:

- (1) Under certain emergency conditions, the provisions of the Act shall not apply. They are:
- (a) Crews of wreck or relief trains.
  - (b) In any case of casualty, unavoidable accident or the act of God.
  - (c) Where the delay was the result of a cause unknown to the carrier or its officers in charge of the employees at the time the employees left a terminal and which could not have been foreseen. (This does include failures of equipment, track, etc.)
  - (d) Any employee who performs duties set forth in B (2) above may be permitted to be or remain on duty for four additional hours in cases involving emergencies.
- (2) The following are some examples of conditions NOT to be considered as an emergency nor as justifying an employee being on-duty in violation of the Act:
- (a) Unavailability of other employees to provide relief.
  - (b) Moving a train to a yard or siding to clear a main track, an interlocking plant, etc.
  - (c) Delay of a train due to mechanical or electrical difficulties or track conditions.
  - (d) Delay of a train due to weather conditions or the wreck of another train, particularly when those conditions are known prior to the train departing its originating terminal or passing a point (siding, yard, etc.) where the train could have been held to provide a relief crew.
  - (e) Delay encountered by another railroad's inability to accept the train in interchange.

G. INTERPRETATIONS:

Certain conditions or circumstances, by the wording of the Act and the legislative history thereof, are subject to differing interpretations as to whether they constitute a violation of the Act. In considering such cases the prime consideration by both the Operating Dept. and the Legal Dept. shall be whether the situation violates the purpose of the Act which was established to "promote safety of employee and travelers upon railroads by limiting the hours of service of employees thereon," and any specific mandates of the Act which cover comparable situations.

In Most instances there is active or pending litigation in the Federal Courts to determine what interpretation shall prevail. Pending the outcome of such litigation, it will be ConRail's policy to interpret certain of these situations as follows:

- (1) When an extra train or engine service employee is called at his home and instructed to report, and drives, to a point other than his home terminal but within his seniority district without being required to first report to his home terminal, such driving time from his home to his reporting or duty point is not considered as time spent in deadheading.
- (2) Designated terminal shall be considered to be a point which is a terminal or reporting point for any ConRail crews and at which there is suitable lodging and eating facilities.
- (3) Time spent attending an investigation or trial shall be considered as time on duty if attendance is required by and paid for by the Company. If attendance is not paid for or not required by the Company, it shall be treated as time off duty.

Questions regarding interpretation of the provisions of the Act should be directed to the ConRail Labor Relations Counsel.

When it is recognized by the Legal and/or Operating Department that a provision of the Act is subject to differing interpretations, ConRail's policy will be determined by the findings of their joint review of the particular condition, subject to the approval of the (title of officer).

#### H. HANDLING OF CITATIONS:

- (1) The FRA will advise the ConRail Legal Dept. of any citations for violations of the "Hours of Service Act". Upon receipt of such citations the Legal Dept. will:
  - (a) Review each citation with a representative of the Operating Dept. who will determine the validity and completeness of the facts and circumstances set forth therein and assist in developing any valid defense.
  - (b) The review of citations will include a determination by the Operating Dept. as to whether we should defend any particular case either on the merits of the case or on the basis of interpretation of the Act.
  - (c) The Legal Dept. with the cooperation and assistance of the Operating Dept. will process the citations with the FRA under the provisions of the Federal Claims Collection Act.
  - (d) Citations which cannot be satisfactorily disposed of by Federal Claims Collection Act procedures will usually result in litigation against ConRail by the FRA.
  - (e) The Operating Dept. will provide qualified witnesses to assist the Legal Dept. in their defense of any such litigation.
  - (f) The Legal Dept. shall handle each citation within the time limits and other Legal requirements as set forth in the Act.

APPLICABILITY OF REGULATIONS  
OF THE  
OCCUPATIONAL SAFETY AND HEALTH ADMINISTRATION

---

SUBJECT REGULATIONS

Code of Federal Regulations, Volume 29, Part 1910 and Part 1926.

(Many of these regulations are based on standards previously developed and established by other Federal agencies and by organizations such as the American National Standards Institute which had developed such standards as the National Fire Protection Code, National Electrical Code, etc. There is no record to indicate that OSHA has considered or adopted AAR or other railroad standards which may be the most complete industrial standards in existence.)

APPLICABILITY

It is the position of ConRail that FRA has sole Federal jurisdiction over safety and health in the railroad industry, as mandated by the Federal Railroad Safety Act. The FRA, in Docket ROS-1, 40 FR 10693, has exercised that jurisdiction.

FRA, by ROS-1, will adopt many of OSHA's standards. FRA has, however, found that certain OSHA standards are not appropriate to the railroad industry in their present form and some have no applicability.

ConRail disputes the jurisdiction of OSHA and the propriety of many of its standards to the railroad industry. However, pending finalization of the FRA's Rules for Occupational Safety, it will be the policy of ConRail to comply, to the extent practical, with OSHA standards, Parts 1910 and 1926, except in the operation of trains.

New construction and repair work should conform to OSHA standards except where such standards are not compatible with railroad operations. Suppliers shall be required to certify that all tools and other general purpose equipment conform to OSHA requirements, except when such requirements are not compatible with railroad operations. Both types of exceptions should be referred to the Legal Department for advice.

Any such conformity with OSHA standards does not imply acknowledgment of OSHA jurisdiction in the railroad industry. Compliance with such national codes as the Electrical Code and the Fire Protection Code is in the interest of the safety of our employees and properties.

OSHA posters or notices of OSHA proceedings are not required to be posted at ConRail facilities.

PROCEDURES FOR HANDLING OSHA INSPECTORS (CSHO)

Without regard to our position on OSHA jurisdiction, their "Compliance Safety and Health Officers" (CSHO) may present themselves to inspect ConRail facilities. When such occurs, the following will apply:

(1) Any "CSHO" who presents himself to inspect any facility of ConRail should be requested to present a warrant from a Federal District Court. If the "CSHO" fails to produce such a warrant, he should be politely, but firmly, denied the right to proceed with such an inspection. The ConRail Legal office with jurisdiction in the area of the facility should immediately be notified by telephone of the presence of the "CSHO" on the property, with or without a warrant, for any further instructions which may be appropriate.

(2) If such a warrant is produced, the "CSHO" has the right to inspect only those facilities stated therein. The "CSHO" has no right to be accompanied on his inspection by an employee or employee representative unless the warrant so specifies. The "CSHO" does have the right to question employees who are working at their assignment in the facility being inspected. The inspection must not cause undue delay or disruption of the operation.

(3) Any "CSHO" who is found to be on the property making an inspection of facilities without a warrant is to be requested to leave the property immediately. If the "CSHO" is in possession of a warrant, inquiry should be made as to why he did not present himself to a responsible supervisor prior to initiating the inspection. In either instance, the ConRail Legal Office with jurisdiction in the area of the facility should be immediately notified by telephone.

(4) If an FRA inspector and a "CSHO" without a warrant present themselves to make a joint inspection of a facility, only the FRA inspector is to be granted the right to make the inspection. The "CSHO" should be permitted, as a matter of courtesy, to accompany the FRA inspector. However, the "CSHO" should not be permitted to question employees, etc.

(5) Any supervisor to whom an OSHA "CSHO" presents himself or who accompanies a "CSHO" on an inspection should take accurate notes as to what transpired. These should be retained in the event they are later needed.

### HANDLING OF OSHA CITATIONS

After the inspection of a facility, OSHA may issue a citation. We must respond to any such citations. The following will apply:

(1) A citation calls for a response or action within 15 working days. Therefore, prompt, expeditious handling is essential.

(2) Such response will display an interest in the safety of ConRail employees without acknowledging OSHA jurisdiction over such matters.

(3) The Division Superintendent or comparable officer will respond to the Area Director of OSHA whose office issued the citation using the format of "Letter #1," attached hereto. In paragraph 2 of that letter, more detail should be given with regard to any condition for which we are cited by the inspector but which, in fact, did not exist.

(4) If the correction of any condition for which we were cited was not complete at the time Letter #1 was sent, the Division Superintendent or comparable officer will send a letter using the format of "Letter #2" attached hereto, before the deadline for abatement, listing any of the conditions which have been corrected, providing we have, in fact, been able to do so. If there are a number of different deadlines for abatement, you may send progress reports following the general format of Letter #2, as each or any condition has been corrected.

A copy of all citations and of all correspondence relative thereto will be sent to the legal Representative in the area involved and to the ConRail Legal Department, Six Penn Center, Philadelphia.

U. S. Department of Labor  
Area Director  
Occupational Safety and Health  
Administration  
(Address)

Dear Sir:

This refers to the citation dated (Date) received (Date), based on inspection (Date) at (name and location of facility) and designated as follows: (Show information in upper right hand corner of citation.)

Consolidated Rail Corporation contests the subject citations on the following bases:

- 1) Consolidated Rail Corporation is a railroad company under the jurisdiction of the Federal Railroad Administration, and the Occupational Safety and Health Administration does not have jurisdiction to issue the subject citations.
- 2) Consolidated Rail Corporation denies that the items specified were in fact violations of Occupational Safety and Health Administration regulations.
- 3) The proposed penalties are oppressive and unreasonable. (Omit this paragraph if notice does not include proposed penalties - see Form OSHA-2C, Item 4.)
- 4) OSHA poster was not displayed since advice thereon would be misleading to employees in view of lack of OSHA jurisdiction. (Omit this paragraph if poster violation of 29 CFR 1903.2 (a) is not alleged.)
- 5) Consolidated Rail Corporation maintains records of and reports injuries, etc., pursuant to FRA regulations and is not required to maintain duplicating records on OSHA Forms 100 and 102. (Omit this paragraph if violation of 29 CFR 1904.4(a) or 1904.5 is not alleged.)
- 6) The following items have been abated as of the dates shown for each item: (Insert list of Item numbers from citation or, if none have been abated, omit this paragraph.)

Please send copies of future correspondence to:  
Legal Department, Consolidated Rail Corporation, Six Penn Center,  
Philadelphia, Pa. 19104

Very truly yours,

Consolidated Rail Corporation

---

U. S. Department of Labor  
Area Director  
Occupational Safety and Health  
Administration  
(Address)

Dear Sir:

This refers to the citation dated (Date) and designated as follows: (Show information in upper right hand corner of citation.)

Although Consolidated Rail Corporation disputes the jurisdiction of the Occupational Safety and Health Administration, as shown by our contest of (Date), the Consolidated Rail Corporation has abated the conditions alleged to be violations of OSHA regulations as of the following dates:

(List items and dates of correction of alleged conditions not included in Letter No. 1.)

Very truly yours,

Consolidated Rail Corporation

---

APPLICABILITY OF  
FEDERAL HIGHWAY ADMINISTRATION REGULATIONS

Subject Regulations:

CFR 49, Chapter III, Subchapter B-

"Federal Motor Carrier Safety Regulations."

Applicability:

The Federal Highway Administration has issued the above regulations applicable to the vehicles of a "motor carrier."

1. ConRail acknowledges the applicability of these regulations to those vehicles which are used by, or in behalf of, ConRail as a substitute for, or an extension of, rail service to transport the goods of others.

(a) It will be the responsibility of the contractor or motor carrier providing such service to comply with these regulations.

(b) ConRail will cooperate in permitting FHWA inspectors on its property to inspect the vehicles and records of such contractors or motor carriers.

2. ConRail questions the applicability of such FHWA regulations to those motor vehicles, owned or leased, which are integral to the performance of railroad maintenance and operating functions. Such vehicles are used in the course of rather than in the furtherance of the railroad's activities. They are not, in such instances, being used for the purposes by which a "motor carrier" is defined.

(a) Any federal jurisdiction over the operation of motor vehicles utilized for such activities would be that of the FRA. Any accident involving a motor vehicle, owned or leased by ConRail, and personnel will be reported to the (Safety Dept.) by the Division or department to which it is assigned. The (Safety Dept.) will submit proper reports to the FRA.

(b) If an FHWA inspector presents himself at any ConRail facility for the purpose of making an inspection, a responsible supervisor will first determine the nature or purpose of the inspection. The supervisor will immediately contact the appropriate ConRail Legal office for advice. The inspector will be politely but firmly advised that the inspection shall not proceed, pending receipt of the instructions from the Legal Department. The supervisor shall be governed by such instructions.

(c) The supervisor shall subsequently prepare a brief report of the nature of the inspector's request, the instructions received from the Legal Department and any acts or reactions of the inspector. This report will be submitted to the Division Superintendent or comparable officer who will forward it to the ConRail Legal Department, Six Penn Center, Philadelphia.

(d) The position which ConRail takes with regard to FHWA jurisdiction over the operation of such vehicles is in no way to be considered cause to ignore their safe condition and operation. The vehicles and the operators thereof are subject to the regulations of the state in which they are licensed or operated. It is the responsibility of each supervisor, to whom such vehicles are assigned, to see that such vehicles are properly maintained in a safe condition and that all operators are properly qualified and licensed to operate them.