

T.J. Brown

PENN CENTRAL TRANSPORTATION COMPANY

George P. Baker, Richard C. Bond, Jervis Langdon, Jr. and Willard Wirtz, Trustees

ORGANIZATION CHARTS

Office of Vice President-Personnel

All positions located at Philadelphia,
unless otherwise shown.

Trustees

Counsel for Trustees
Counsel

Administrative Assistant

George P. Baker
Richard C. Bond
Jervis Langdon, Jr.
Willard Wirtz

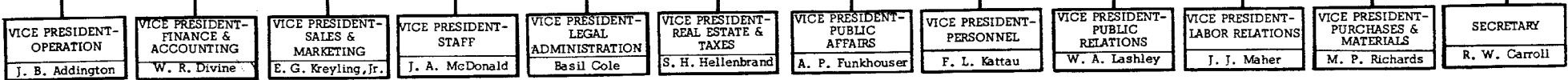
R. W. Blanchette
J. F. Bomster

V. L. Gross

March 1, 1971

PRESIDENT
W. H. Moore

ASSISTANT TO
PRESIDENT
J. B. Ransom



Section 1

Section 2

Section 3

Section 4

Section 5

Section 6

Section 7

Section 8

Section 9

Section 10

Section 11

March 1, 1971

President

Assistant to President

Executive Assistant

Administrative Assistant

Manager-Pass Bureau

Aviation Manager

Secretary

Assistant Secretary

Assistant Secretary

Assistant Secretary

Manager-Building Services

Assistant Secretary (New York)

W. H. Moore

J. B. Ransom

C. Loeber

E. H. Jewell

F. J. Armstrong

J. R. Carney

R. W. Carroll

W. A. Haring

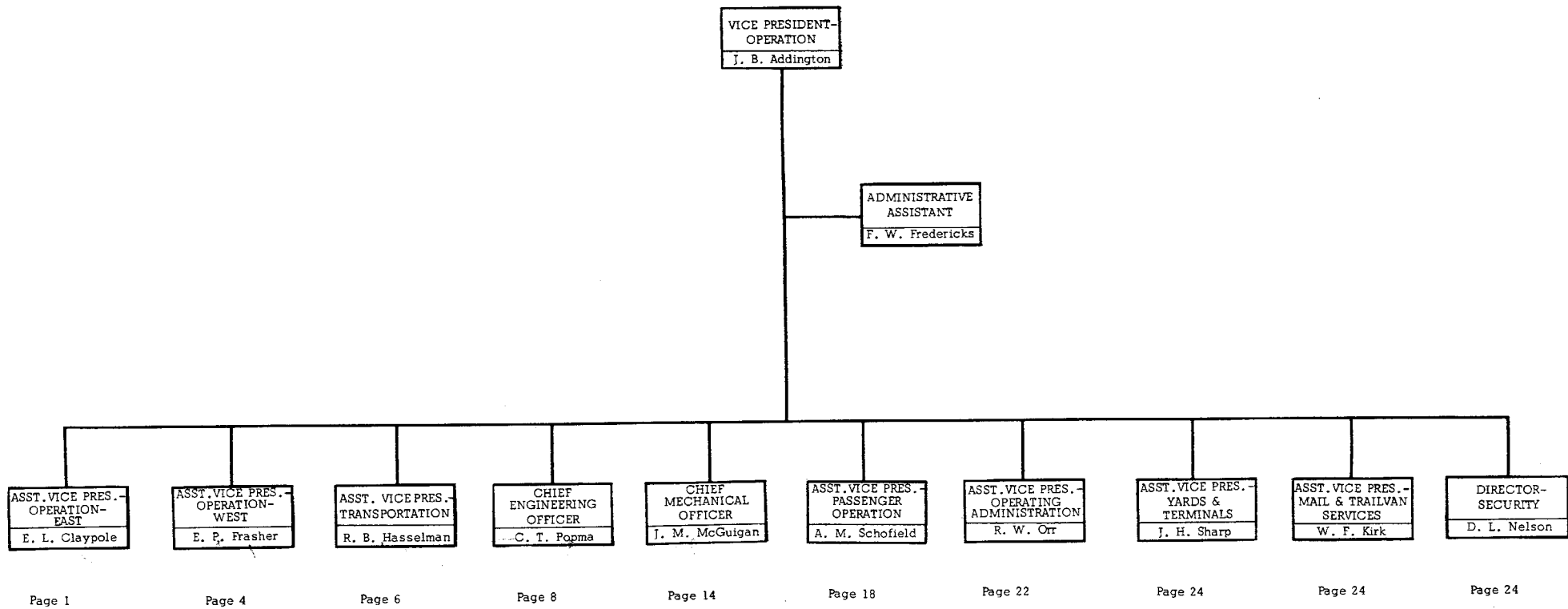
D. R. Powell

W. H. Barlow

D. J. Snyder

G. C. Holpp

March 1, 1971



Vice President-Operation
 Administrative Assistant
 Assistant Vice President-Operation-East
 Administrative Assistant
 General Manager (New Haven)
 Assistant General Manager (New Haven)
 Superintendent-Operations-Freight (New Haven)
 Assistant Superintendent-Operations-Freight (New Haven)
 Assistant Superintendent-Operations-Freight (New Haven)
 Assistant Superintendent-Operations-Freight (New Haven)
 Superintendent-Operations-Passenger (New Haven)
 General Road Foreman (New Haven)
 Manager-Operating Rules (New Haven)
 Superintendent-Stations (New Haven)
 Assistant to General Manager (New Haven)
 Administrative Assistant (New Haven)
 Division Superintendent (Boston)
 Assistant Superintendent (Boston)
 Terminal Superintendent (Boston)
 Terminal Superintendent (Providence)
 Division Superintendent (Buffalo)
 Assistant Superintendent (Buffalo)
 Terminal Superintendent (E. Buffalo)
 Terminal Superintendent (Buffalo)
 Terminal Superintendent (Rochester)
 Division Superintendent (New Haven)
 Assistant Superintendent (New Haven)
 Assistant Superintendent (New York)
 Terminal Superintendent (Cedar Hill)
 Division Superintendent (Utica)
 Assistant Superintendent (Utica)
 Terminal Superintendent (Selkirk)
 Terminal Superintendent (DeWitt)

J. B. Addington
 F. W. Fredericks
 E. L. Claypole
 L. D. Puleo
 H. E. Ring
 W. L. Butz

J. G. Befus
 L. E. Farnham
 D. D. Rogers
 K. T. Kelly
 W. E. Copeland
 W. J. Hedderman
 C. L. Baughman
 J. M. Finch
 T. K. Brown
 E. C. Cross
 R. J. Duggan
 M. Biederman
 R. C. Waterson
 R. P. McFeaters
 G. R. Fuller
 J. L. Krajcer
 F. S. Marshall
 A. G. Lageman
 D. A. Fink
 D. C. Molen
 J. G. Gallino
 M. R. Infante
 E. D. Joslin
 W. J. Sparks
 R. E. McDonald
 R. E. Hatton

Vice President-Operation

Assistant Vice President-Operation-East

General Manager

Assistant General Manager

Superintendent-Operations-Freight

Assistant Superintendent-Operations-Freight

Assistant Superintendent-Operations-Freight

Assistant Superintendent-Operations-Freight

Superintendent-Operations-Passenger

General Road Foreman

Manager-Operating Rules

Superintendent-Stations

Coordinator High Speed Demonstration Project

Administrative Assistant

Division Superintendent (Baltimore)

Assistant Superintendent (Baltimore)

Assistant Superintendent (Wilmington)

Assistant Superintendent-Passenger (Baltimore)

Division Superintendent (New York)

Assistant Superintendent (New York)

Assistant Superintendent (New York)

Assistant Superintendent-Passenger (New York)

Assistant Superintendent-Suburban Operations (New York)

Division Superintendent

Assistant Superintendent

Assistant Superintendent

Assistant Superintendent-Passenger

Terminal Superintendent

Division Superintendent (Harrisburg)

Assistant Superintendent (Harrisburg)

Terminal Superintendent (Enola)

R. F. Lawson

J. G. Robins

R. J. Slater

R. G. Alleman

R. G. Huggins

C. W. Johnson

F. K. West

W. B. Suhrie

R. M. Douglas

J. L. Ryan

R. B. Watson

R. K. Culver

F. I. Doebber

R. W. Strachan

G. N. Doughty

R. J. Hunter

K. J. Tomasevich

G. T. Dailey

W. A. Vail

W. J. Shields

H. J. Smith

R. A. Herman, Jr.

N. L. Bishop

C. B. Lockwood

W. A. O'Toole

W. H. McCalmont

P. F. Schwartz

P. E. Nouse

D. E. Sechrist

Vice President-Operation

Assistant Vice President-Operation-East

General Manager (Pittsburgh)

Assistant General Manager (Pittsburgh)

Superintendent-Operations (Pittsburgh)

Assistant Superintendent-Operations (Pittsburgh)

Assistant Superintendent-Operations (Pittsburgh)

Assistant Superintendent-Operations (Pittsburgh)

Assistant Superintendent-Operations (Pittsburgh)

General Road Foreman (Pittsburgh)

Manager-Operating Rules (Pittsburgh)

Superintendent-Stations (Pittsburgh)

Administrative Assistant (Pittsburgh)

Division Superintendent (Pittsburgh)

Assistant Superintendent (Pittsburgh)

Assistant Superintendent (Pittsburgh)

Terminal Superintendent (Conway)

Division Superintendent (Altoona)

Assistant Superintendent (Altoona)

Division Superintendent (Williamsport)

Assistant Superintendent (Clearfield)

Assistant Superintendent (Williamsport)

Division Superintendent (Youngstown)

Assistant Superintendent (Youngstown)

Terminal Superintendent (Ashtabula)

G. M. Smith

C. W. Owens

R. L. Short

J. S. Findlay

W. J. Garrity

D. A. Powers

M. J. Rodwick

S. B. Dixon

D. E. Young

A. F. Rozell

P. L. Strauch

W. L. Holler

N. G. Anders

C. C. Brown

G. F. Bressler

K. F. Webel

J. A. Connelly

T. E. Jordan

H. R. Obleman

W. L. Bandini

G. A. Streett

E. V. Berkstresser

E. W. Conner

Vice President-Operation

Assistant Vice President-Operation-West

Administrative Assistant

General Manager (Chicago)

Assistant General Manager (Chicago)

Superintendent-Operations (Chicago)

Assistant Superintendent-Operations (Chicago)

Assistant Superintendent-Operations (Chicago)

Assistant Superintendent-Operations (Chicago)

General Road Foreman (Chicago)

Manager-Operating Rules (Chicago)

Superintendent-Stations (Chicago)

Administrative Assistant (Chicago)

Division Superintendent (Chicago)

Assistant Superintendent (Chicago)

Terminal Superintendent (Elkhart)

Division Superintendent (Cleveland)

Assistant Superintendent (Cleveland)

Terminal Superintendent (Cleveland)

Division Superintendent (Ft. Wayne)

Division Superintendent (Toledo)

Assistant Superintendent (Toledo)

Terminal Superintendent (Toledo)

Terminal Superintendent (Fairlane)

General Manager (Detroit)

Superintendent-Operations (Detroit)

Assistant Superintendent-Operations (Detroit)

Assistant Superintendent-Operations (Detroit)

Assistant Superintendent-Operations (Detroit)

General Road Foreman (Detroit)

Manager-Operating Rules (Detroit)

Superintendent-Stations (Detroit)

Administrative Assistant (Detroit)

E. P. Frasher

T. J. O'Grady

K. E. Smith

R. E. Sullivan

A. B. Cravens

N. K. Cain

M. J. Jozaitis

J. F. Murphy

H. L. Huff

R. M. Strickland

H. J. Kristak

C. R. Spence

J. G. Eannace

J. J. Dougherty

R. A. Rutledge

G. L. Maas

F. H. Jones

R. A. Shaw

G. E. Williamson

A. J. Conklin

W. K. Dunseath

H. F. Carter

J. H. Burdakin

W. D. Murphy

R. W. Coover

D. E. Lillyhorn

C. J. McGinty

D. R. Yerkes

J. P. Seehaver

V. H. Green, Jr.

W. W. LaCombe

Vice President-Operation

Assistant Vice President-Operation-West

General Manager (Detroit)

Division Superintendent (Detroit)

Assistant Superintendent (Detroit)

Terminal Superintendent (Detroit)

Division Superintendent (Jackson)

Assistant Superintendent (Jackson)

Division Superintendent (St. Thomas)

General Manager (Indianapolis)

Assistant General Manager (Indianapolis)

Superintendent-Operations (Indianapolis)

Assistant Superintendent-Operations (Indianapolis)

Assistant Superintendent-Operations (Indianapolis)

Assistant Superintendent-Operations (Indianapolis)

Assistant Superintendent-Operations (Indianapolis)

General Road Foreman (Indianapolis)

Manager-Operating Rules (Indianapolis)

Superintendent-Stations (Indianapolis)

Division Superintendent (Columbus)

Assistant Superintendent (Columbus)

Terminal Superintendent (Columbus)

Terminal Superintendent (Charleston)

Division Superintendent (Cincinnati)

Assistant Superintendent (Cincinnati)

Terminal Superintendent (Cincinnati)

Division Superintendent (Indianapolis)

Assistant Superintendent (Indianapolis)

Terminal Superintendent (Indianapolis)

Assistant Superintendent (Indianapolis)

Terminal Superintendent (E. St. Louis)

Administrative Assistant

C. E. Gratz

J. W. Meadows

R. C. Cottrell

J. B. Hitchcock

R. L. Pruitt

J. L. Stanek

J. E. Martin

B. L. Strohl

C. G. Yund

J. E. Atelski

E. Barton

J. R. Charles

J. Dring

R. T. Eckles

R. Brannon, Jr.

L. A. Baggerly

E. F. Granfield

P. B. Daniels

R. E. Gratz

J. A. Terhorst

A. J. Wayne

L. J. Tutorow

K. F. Kalsow

J. M. LeGates

J. A. Arton

J. S. Lotz

E. L. Keller

J. P. Wohlhieter

Vice President-Operation

Assistant Vice President-Transportation

Director-Freight Service Control

Director-Freight Service Control

Director-Operating Rules

Manager-Operating Rules

Manager-Operating Rules

Manager-Operating Rules

Administrative Assistant

General Manager-Transportation

Director-Freight Transportation Controls

Director-Freight Service Performance

Director-Locomotive Utilization Planning

Director-Equipment Coordination

Director-Equipment Coordination

Director-Unit Train Operation

Manager-Unit Train Operation

Manager-Hopper Car Distribution

Director-Freight Train Operation

Manager-Freight Train Operation

Manager-Freight Train Operation

Manager-Freight Train Operation

Manager-Freight Train Operation

Manager-Freight Service-Staff

Director-Locomotive & Caboose Distribution

Manager-Locomotive & Caboose Distribution

Manager-Locomotive & Caboose Distribution

Manager-Locomotive & Caboose Distribution

Manager-Locomotive & Caboose Distribution

Director-Stations

Manager-Station Coordination

Manager-Station Analysis

Manager-Station Systems & Procedures

Manager-Waybilling Procedures

Manager-Demurrage

R. B. Hasselman
L. J. Bossler
J. W. McCrain
J. W. Rathvon
H. R. Baker
J. L. Thompson
J. D. Van Cleave
J. H. Brown
R. C. Marquis
M. W. Krug
R. W. Lang
R. V. Brinkworth
T. J. Brown
W. R. Foster
J. W. Hobb
J. H. Amend
F. M. Raferty
E. A. Priebe
R. O. Blount
B. J. Marth
R. C. Sweely
W. J. Twomley
J. H. Beer
J. P. Tansey
G. J. Abdo
J. J. Cuniff
J. D. Maloney
W. F. Martin
G. M. Casady
R. E. Jackson
E. F. Silvo
C. A. Thomas
H. W. McAllister
R. M. McKay

Vice Operation-Operation

Assistant Vice President-Transportation

General Manager-Transportation

Director-Freight Car Utilization

Manager-Car Utilization Planning

Manager-Car Utilization Projects

Assistant Director-Special Equipment Utilization

Manager-Automotive Car Utilization

Manager-Covered Hopper Car Utilization

Manager-DF Car Utilization

Manager-Multi-Level Car Utilization

Manager-Special Flat Car Utilization

Assistant Director-General Equipment Utilization

Manager-Freight Car Distribution

Manager-Freight Car Distribution

Assistant Director-Operating Practices

Manager-Hazardous Materials

Manager-Clearances

Manager-Equipment Coordination (Chicago)

Manager-Equipment Coordination (Cleveland)

Manager-Equipment Coordination (Detroit)

Manager-Equipment Coordination (Indianapolis)

Manager-Equipment Coordination (New Haven)

Manager-Equipment Coordination

R. E. Artusy

C. P. Hughes

W. J. Partington

R. L. Morris

W. R. Randall

J. D. Dieffenbacher

M. N. Downes

W. W. Meuser

K. L. Richards

C. R. Lucas

W. D. Bradley

F. A. Formichella

R. M. Decker

J. S. Dehl

G. D. Graff

J. A. Kerins

L. Larson, Jr.

M. J. MacInnes

D. M. Bright

R. S. Quinn

B. P. Marakoff

Vice President-Operation

Chief Engineering Officer

Engineer-High Speed Ground Transportation

Manager-Engineering Systems Development

Administrative Assistant

Chief Engineer-Communications & Signals

System Engineer-Communications & Signals Maintenance

Engineer-Communications & Signals Maintenance (Albany)

Engineer-Communications & Signals Maintenance (Indianapolis)

Engineer-Communications & Signals Maintenance

Engineer-Communications & Signals Maintenance (Pittsburgh)

Engineer-Communications & Signals Maintenance (Toledo)

System Engineer-Electric Traction

Engineer-Communications & Signals-Staff

Engineer-Communications & Signals-Design

Engineer-Circuit Design

Engineer-Communications & Signals Construction

Electronics Engineer

Chief Engineer

Assistant Chief Engineer-Staff

Staff Engineer

Special Engineer

Senior Civil Engineer

Senior Civil Engineer

Senior Civil Engineer

Senior Civil Engineer

Senior Civil Engineer

Senior Civil Engineer

Senior Civil Engineer

Assistant Chief Engineer-Special Projects

Special Project Engineer (Washington)

Special Project Engineer (Boston)

Special Project Engineer (New York)

Special Project Engineer

C. T. Popma

M. B. Miller

D. L. Glickstein

R. J. Yarsinsky

J. J. Eash

H. Alexander

F. G. Fotta

D. G. Shiels

J. E. Hartfield

L. E. Light

E. E. Harris

H. Rappaport

J. G. Cunningham

R. H. Covell

D. W. Greaves

J. A. Early, Jr.

R. H. Brown

C. E. Defendorf

T. P. Cunningham

A. Matthews, Jr.

E. S. Miller

H. T. Alexander

J. P. Collins

W. A. Kautz, Jr.

P. A. Mainquist

W. W. Parks

C. M. Snovel

H. A. Spruill

A. E. Cawood

W. G. Jones

B. K. Heald

R. T. Koza

J. M. Kirschner

Vice President-Operation

Chief Engineering Officer

Chief Engineer

Engineer-Construction

Assistant Engineer-Construction (Chicago)

Assistant Engineer-Construction

Senior Civil Engineer (Columbus)

Senior Civil Engineer (Harsimus Cove)

Planning Engineer

Engineer-Structures

Engineer-Bridges & Buildings

Engineer-Bridges & Buildings

Engineer-Bridges & Buildings

Architect

Mechanical & Electrical Engineer

Area Engineer (Chicago)

Senior Planning Engineer (Chicago)

Senior Construction Engineer (Chicago)

Senior Structural Engineer (Chicago)

Senior Civil Engineer (Chicago)

Area Engineer (New Haven)

Senior Civil Engineer (Boston)

Area Engineer (Pittsburgh)

Senior Planning Engineer (Pittsburgh)

Senior Construction Engineer (Pittsburgh)

Senior Structural Engineer (Pittsburgh)

W. J. Sponseller

R. D. Lowery

J. N. Hagan

J. W. Seltzer

W. H. Grammenstetter

C. C. Yespelkis

M. L. Koehler

R. J. Clarke

L. R. Kubacki

F. A. Russ, Jr.

W. C. Humphreys

I. P. Yatzkan

S. G. Wintoniak

G. R. Fuller

C. E. Sosnowski

W. P. Hendrix

W. R. Addison

E. N. Chapin

J. B. Bell, Jr.

W. M. McCracken

E. Wollett, Jr.

W. S. Titlow

W. D. Streiff

Vice President-Operation

Chief Engineering Officer

Chief Engineer-Maintenance of Way

Engineer-Track Material

Engineer-Track Retirement Material

Engineer-Track

Assistant Engineer-Track

Engineer-Standards

System Production Engineer-Track

Superintendent-Maintenance Equipment

Production Manager-Maintenance Equipment

Superintendent-Maintenance of Way Shop (Canton)

Superintendent-Maintenance of Way Shop (Jackson)

Superintendent-System Maintenance Gangs

Production Engineer-Track (Albany)

Assistant Production Engineer-Track (New Haven)

Assistant Production Engineer-Track (Rochester)

Assistant Production Engineer-Track (Springfield)

Assistant Production Engineer-Track (Utica)

Production Engineer-Track (Indianapolis)

Assistant Production Engineer-Track (Cincinnati)

Assistant Production Engineer-Track (Columbus)

Assistant Production Engineer-Track (Indianapolis)

Assistant Production Engineer-Track (Indianapolis)

Production Engineer-Track

Assistant Production Engineer-Track (Baltimore)

Assistant Production Engineer-Track (Harrisburg)

Assistant Production Engineer-Track (New York)

Assistant Production Engineer-Track

Production Engineer-Track (Pittsburgh)

Assistant Production Engineer-Track (Altoona)

Assistant Production Engineer-Track (Youngstown)

Assistant Production Engineer-Track (Pittsburgh)

Assistant Production Engineer-Track (Williamsport)

B. J. Gordon

P. K. Cruckshank

W. G. Kemmerer

J. T. Sullivan

W. B. Dwinell, III

C. C. Herrick

H. B. Berkshire

M. E. Kerns

J. W. Mueller

F. C. Kalb

F. Bucceri

D. A. Sutherland

W. A. Marx

G. S. Triebel

H. E. Voss

R. A. Corbett

D. K. Miller

W. Baerthlein

R. W. Mefford

P. Metzger

W. H. Braughton

N. H. Clark

L. S. Strohl

J. R. Royer

D. F. Sullivan

C. H. Allen

O. J. Dean

M. K. Clark

G. N. Myers

T. W. Smallwood

W. P. Pope

Vice President-Operation

Chief Engineering Officer

Chief Engineer-Maintenance of Way

System Production Engineer-Track

Production Engineer-Track (Toledo)

Assistant Production Engineer-Track (Cleveland)

Assistant Production Engineer-Track (Detroit)

Assistant Production Engineer-Track (Dunkirk)

Assistant Production Engineer-Track (South Bend)

Assistant Production Engineer-Track (Toledo)

System Production Engineer-Structures

Production Engineer-Budget & Planning

Engineer-Field Production-Structures

Production Engineer-Structures (Albany)

Production Engineer-Structures (Indianapolis)

Production Engineer-Structures

Production Engineer-Structures (Pittsburgh)

Production Engineer-Structures (Toledo)

System Engineer-Maintenance of Way

Manager-Welding Plants

Engineer-Maintenance of Way (Albany)

Division Engineer (Boston)

Assistant Division Engineer (Boston)

Assistant Division Engineer (Springfield)

Division Engineer (Buffalo)

Assistant Division Engineer (Buffalo)

Division Engineer (New Haven)

Assistant Division Engineer (New Haven)

Division Engineer (Utica)

Assistant Division Engineer (Selkirk)

B. G. Wilbrant

R. S. Pyson

A. S. McRae

M. A. Dolcie

N. J. Padula, Sr.

L. F. Schrader

F. D. Day

J. A. Hawley

J. J. Brandimarte

J. A. Wettstone

D. J. Engle

H. G. Campbell

D. H. McKibben

H. C. Bitting

R. H. Smith

R. E. Gorsuch

G. E. Hartsoe

W. G. Lehn

T. A. Reynolds

R. M. McGuire

A. W. Grimes

D. L. Wilson

D. A. Shoff

R. H. Jackson, Jr.

H. R. Davis

W. R. Maddock, Sr.

Vice President-Operation

Chief Engineering Officer

Chief Engineer-Maintenance of Way

System Engineer-Maintenance of Way

Engineer-Maintenance of Way (Indianapolis)

Division Engineer (Columbus)

Assistant Division Engineer (Charleston)

Assistant Division Engineer (Columbus)

Division Engineer (Cincinnati)

Assistant Division Engineer (Cincinnati)

Division Engineer (Indianapolis)

Assistant Division Engineer (Indianapolis)

Division Engineer (Indianapolis)

Assistant Division Engineer (Indianapolis)

Engineer-Maintenance of Way

Division Engineer (Baltimore)

Assistant Division Engineer (Wilmington)

Division Engineer (New York)

Division Engineer

Assistant Division Engineer

Division Engineer (Harrisburg)

Engineer-Maintenance of Way (Pittsburgh)

Division Engineer (Altoona)

Assistant Division Engineer (Altoona)

Division Engineer (Pittsburgh)

Assistant Division Engineer (Pittsburgh)

Assistant Division Engineer (Pittsburgh)

Division Engineer (Williamsport)

Assistant Division Engineer (Williamsport)

Division Engineer (Youngstown)

Assistant Division Engineer (Youngstown)

Assistant Division Engineer (Canton)

J. R. Clark

A. R. Hermann

E. P. Siravo

D. M. Geist

P. J. Harnish

A. V. Levergood

W. S. Davis

R. H. McDonald

W. J. English

C. F. Parvin

W. B. Knight

J. N. Schull, Jr.

R. P. Howell

J. D. Cossell

N. C. Newton, Jr.

R. D. Johnson

A. S. Barr

J. E. Rosenbaum

L. P. Bonfardin

G. E. Ellis

C. E. Hutchison

R. J. O'Leary

H. E. Richards

J. A. Arduini

J. M. Rankin

D. A. Herbert

S. T. Clark

Vice President-Operation
Chief Engineering Officer
Chief Engineer-Maintenance of Way
System Engineer-Maintenance of Way
Engineer-Maintenance of Way (Toledo)
Division Engineer (Chicago)
Assistant Division Engineer (Chicago)
Division Engineer (Cleveland)
Assistant Division Engineer (Cleveland)
Division Engineer (Detroit)
Assistant Division Engineer (Detroit)
Division Engineer (Toledo)
Assistant Division Engineer (Toledo)
Division Engineer (Ft. Wayne)
Assistant Division Engineer (Ft. Wayne)
Division Engineer (Jackson)
Assistant Division Engineer (Jackson)
Division Engineer (St. Thomas)

G. W. Deblin
J. J. Baffa
G. J. Kerbs
C. F. Hunt

E. H. Steele, Jr.
W. P. Rybinski
R. A. Kendall
H. F. Long
G. S. Lehman
H. J. Deeds
E. R. English
N. B. Sellers
D. L. Boger

Vice President-Operation

Chief Mechanical Officer

Director-Equipment Performance

Director-Equipment Planning & Control

Administrative Assistant

General Mechanical Superintendent-Locomotive

Manager-Locomotive Maintenance Quality Control

Manager-Locomotive Maintenance-Electrical

Manager-Locomotive Maintenance-Mechanical

Manager-Locomotive Shop Scheduling

Manager-Locomotive Inspection

Manager-Locomotive Inspection

Manager-Locomotive Performance

Manager-Diesel Terminals (Selkirk)

Shop Manager (Collinwood)

Shop Manager (Conway)

Shop Manager (Enola)

Shop Manager (Selkirk)

Shop Manager (New Haven)

General Mechanical Superintendent-Freight Cars

Manager-Freight Car Maintenance

Manager-Special Equipped Cars

Manager-Car Shop Scheduling

Manager-Car Inspection

General Mechanical Superintendent-Passenger Cars

Manager-M.U. Car Maintenance

Manager-Passenger Car Maintenance

Manager-Passenger Car Maintenance

General Mechanical Superintendent-Equipment Research & Engineering Planning

Director-Equipment Engineering

Manager-Air Brakes

Senior Mechanical Engineer-Freight Car

Senior Mechanical Engineer-Passenger

Senior Mechanical Engineer-Locomotive

Senior Electrical Engineer-Equipment

Manager-Research Laboratory (Collinwood)

Manager-Applied Research-Electrical (Collinwood)

J. M. McGuigan

C. R. McKenna

C. L. Reese

D. G. Wagner

R. C. Johnston

E. R. Stickel

R. E. Steele

K. F. Miller

H. A. Whipple

F. C. Conte

W. L. O'Connor

R. W. Nichols

H. F. Levernosh

E. J. Minck

R. H. Seeman

D. M. Tutko

J. A. Basile

W. H. Wonnell

E. H. Wright

D. J. Kennedy

A. R. Rowe

V. F. Kania

R. L. Yontz

W. A. Mullen

M. J. Chandler

L. W. Brennan

J. W. Brunner

E. T. Harley

O. R. Pandy

A. J. Serieno

W. F. Bugg

J. R. Reehling

C. M. Smith

W. E. Kelley

K. D. Reed

L. R. Lombardo

Vice President-Operation

Chief Mechanical Officer

General Mechanical Superintendent-Systems Shops

Manager-Production Control (Collinwood)

General Manager-Altoona Shops (Altoona)

General Superintendent-Car Shops (Altoona)

Assistant General Superintendent-Car Shops (Altoona)

Superintendent-Altoona Car Shops (Altoona)

Superintendent-Sam Rea Shops (Altoona)

General Superintendent-Locomotive Shops (Altoona)

Superintendent-Locomotive Shop (Production) (Juniata)

Superintendent-Locomotive Shop (Components) (Altoona)

Production Control Manager (Altoona)

Manager-Accounting (Altoona)

Supervisor-Accounting Operations (Altoona)

Superintendent-Plant Maintenance (Altoona)

General Superintendent-Shops (Beech Grove)

General Superintendent-Shops (Collinwood)

General Superintendent-Shops (Wilmington)

J. C. White

J. J. Gregory

J. S. Fadale

J. E. Stuart

A. P. Ruscio

J. E. Woomer

R. C. Bowman

R. C. Ambelang

E. L. Arms

D. W. Grimm

H. S. Miller

J. M. Schultz, Jr.

J. F. Leap

P. F. Hoerath

J. F. Roseman

J. F. McDonough

R. M. Bailey

Vice President-Operation

Chief Mechanical Officer

Superintendent-Equipment (Cleveland)
Supervisor-Locomotive Inspection (Detroit)
Supervisor-Locomotive Inspection (Toledo)
Supervisor-Car Inspection (Cleveland)
Supervisor-Car Inspection (Detroit)
Master Mechanic (Buffalo)
Master Mechanic (Cleveland)
Master Mechanic (Detroit)
Master Mechanic (Elkhart)
Master Mechanic (St. Thomas)
Master Mechanic (Toledo)
Superintendent-Equipment (Indianapolis)
Supervisor-Locomotive Inspection (Avon)
Supervisor-Car Inspection (Avon)
Master Mechanic (Chicago)
Master Mechanic (Columbus)
Master Mechanic (St. Louis)
Master Mechanic (Cincinnati)
Master Mechanic (Ft. Wayne)
Master Mechanic (Indianapolis)
Superintendent-Equipment (Pittsburgh)
Supervisor-Locomotive Inspection (Conway)
Supervisor-Car Inspection (Pitcairn)
Master Mechanic (Conway)
Master Mechanic (Harrisburg)
Master Mechanic (Pittsburgh)
Master Mechanic (Altoona)
Master Mechanic (Williamsport)
Master Mechanic (Youngstown)
Master Mechanic (Charleston)

W. L. Thigpen
S. Baggott
P. D. Holt
J. J. O'Shea
R. O. Patterson
M. A. Laurello
N. A. Oley
D. C. Gezon
R. M. Murphy
W. W. Henry
R. L. Hauth
R. F. Doyle
J. C. Williams
R. T. Tomlinson
R. J. Preski
W. T. Roberts
W. H. Long
W. C. Wordwell
R. W. Cheeseman
D. R. Sweetland
C. A. Korn, Jr.
E. T. McGarvey
W. F. Carman
M. J. Sudol
J. M. Geiger
E. L. Price
J. E. Richey
H. W. Wittman, Jr.
P. I. Harclerode
D. R. Craine

Vice President-Operation

Chief Mechanical Officer

Superintendent-Equipment (New Haven)

Supervisor-Locomotive Inspection (New Haven)

Supervisor-Locomotive Inspection (Philadelphia)

Supervisor-Car Inspection (Philadelphia)

Supervisor-Car Inspection (Selkirk)

Supervisor-Passenger Car Inspection (Boston)

Master Mechanic (Boston)

Master Mechanic (Newark)

Master Mechanic (New York)

Master Mechanic (Philadelphia)

Master Mechanic (Baltimore)

Master Mechanic (New Haven)

Master Mechanic (Selkirk)

Master Mechanic (Utica)

Shop Manager-Floating Equipment (Hoboken)

R. W. Mustard
D. P. Prendergast
E. L. Phelps
R. A. Holley
M. E. Knouse
B. J. Tripoli
O. R. Harrold
F. D. Cheney
S. V. Lupi
G. J. Huemrich
W. K. Levenson
M. P. Metzger
W. D. Taylor
E. A. Anesi
W. F. Korker

Vice President-Operation

Assistant Vice President-Passenger Operation

Administrative Assistant

Manager-Revenue & Statistics-Passenger

Manager-Passenger Train Service

General Manager (Intercity Passenger Service)

Director-Passenger Service

Assistant Director-Passenger Service

Manager-Passenger Service Planning

Manager-Passenger Train Schedules & Consists

Manager-Special Movement Bureau

Manager-Suburban Service

Manager-Empire Service

Manager-Passenger Car Distribution

Manager-Timetables

Assistant Director-Passenger Train Operation

Assistant Director-Passenger Terminal Operation

Assistant Director-Passenger Sales

Manager-Passenger Sales (New York)

Manager-Passenger Sales

Manager-Passenger Rates & Tariffs

Director-Passenger Service-New England (New Haven)

Manager-Passenger Sales (New Haven)

Manager-Passenger Service (New Haven)

Director-Dining, Sleeping & Parlor Car Service (Long Island City)

Assistant Director-Dining, Sleeping & Parlor Car Service-Operations (LIC)

Manager-Dining, Sleeping & Parlor Car Service-Personnel (Long Island City)

Manager-Dining, Sleeping & Parlor Car Service-Standards (Long Island City)

Manager-Auditing & Accounting (Long Island City)

A. M. Schofield
J. Woodruff
C. H. A. Chain, Jr.
W. L. Frederick
J. M. Gilmore

C. B. Alban
R. F. Langer
K. R. Liddington
D. S. Keim
T. J. Costello
F. R. Scheidler
R. L. Garner
H. R. Smith
J. S. Piet
D. E. Ulrich
W. L. Millar, Jr.
J. E. DeGrange
R. T. Donohue
J. J. Power
C. A. Goodwin
G. S. Douglas
J. F. Keefe
S. N. Phelps
J. T. Blake
M. Scavarelli
R. J. Regan
P. E. Kenny

Vice President-Operation

Assistant Vice President-Passenger Operation

General Manager (Philadelphia Commuter Area)

Superintendent-Suburban Transportation

Superintendent-Suburban Terminals

Superintendent-Suburban Equipment

Master Mechanic

Manager-Suburban Accounting

Industrial Engineering-Suburban Service

Executive Assistant

F. S. King

J. K. Shoemaker

R. A. Donnelly

F. D. Abate

J. B. Fulton

T. M. O'Leary

C. W. Cox

M. C. Favinger

Vice President-Operation

Assistant Vice President-Passenger Operation

General Manager (Metropolitan Region) (New York)

Assistant General Manager-Operation (New York)

General Superintendent-Transportation (New York)

Transportation Superintendent (New York)

Terminal Superintendent (Grand Central Terminal) (New York)

Transportation Superintendent (New Haven)

Superintendent-Train Operation (New York)

Chief Road Foreman (New York)

Chief Regional Engineer (New York)

Staff Engineer (New York)

Regional Engineer-Design & Construction (New York)

Senior Civil Engineer (New York)

Senior Civil Engineer (New York)

Regional Engineer-Communications & Signals (New York)

Regional Engineer-Communications & Signals Construction (New York)

Regional Engineer-Structures (New York)

Superintendent-Building Maintenance & Utilities (GCT) (New York)

Regional Engineer-Electric Traction (New York)

Regional Engineer-Maintenance of Way (New York)

Assistant Regional Engineer-Maintenance of Way (New York)

Assistant Regional Engineer-Maintenance of Way (New York)

Engineer-Program Maintenance (New York)

Regional Mechanical Superintendent (New York)

Regional Mechanical Supervisor-Locomotive

Regional Mechanical Supervisor (New York)

Assistant Regional Mechanical Superintendent (New York)

Shop Manager (Harmon)

Shop Manager (Stamford)

Master Mechanic (New York)

Master Mechanic (New Haven)

E. R. Adams

R. K. Pattison

J. F. Spreng

F. L. Paulin

R. W. Collins

L. J. Forbes, Jr.

R. Ashton

P. F. Overlease

W. Glavin

A. E. Shaw, Jr.

T. J. Mearsheimer

E. B. Andreo

T. F. Maloney

R. L. Straw

M. H. Work

L. B. Rasmussen

W. J. Marko

K. M. Lockerby

J. G. Pfaller

E. C. Armour

M. E. Paisley

H. L. Robinson

C. W. Cole

R. L. Kohl

R. Montross

F. R. Immelt

E. D. Laird

H. R. McIlveen

J. A. DeLitto

R. L. Cronk

Vice President-Operation

Assistant Vice President-Passenger Operation

General Manager (Metropolitan Region)

Assistant General Manager-Passenger Service (New York)

Director-Marketing (New York)

Manager-Concessions (New York)

Manager-Real Estate (New York)

Director-Passenger Service (New York)

Manager-Suburban Planning (New York)

Manager-Passenger Service (New York)

Manager-Passenger Terminal Operation (New York)

Manager-Commissary (New York)

Assistant Director-Public Relations (New York)

Manager-Public Relations (New York)

Director-Administration (New York)

Manager-Data Processing Coordination (New York)

Superintendent-Labor Relations & Personnel (New York)

Assistant Superintendent-Labor Relations & Personnel (New York)

Supervisor-Personnel (New York)

Supervisor-Training (New York)

Manager-Industrial Engineering (New York)

Supervisor-Capital Expenditures Planning (New York)

Superintendent-Police (New York)

Manager-Purchases & Materials (New York)

Regional Controller (New York)

Supervisor-Budgets & Cost Control (New York)

Supervisor-General Accounting (New York)

Manager-Passenger Revenues (New York)

Supervisor-Costs & Statistics (New York)

Counsel (New York)

Executive Assistant (New York)

J. M. Loconto

M. G. Collins

J. W. McCarthy

K. F. Williams

L. W. Maglione

H. F. Cavanaugh

J. F. Davis, Jr.

J. F. Rentz

H. C. Cassell

C. G. Muldoon

K. H. Hannon

J. J. Popp

C. O. Brooks

K. F. Schwab

G. P. Butler

A. L. Berwanger

A. L. Richardson

L. E. Williams, Jr.

E. A. Gencarelli

D. M. Gibson

R. J. Jagelski

F. Milano

G. J. Bernard

F. J. Burns

E. F. Jones

R. J. Mueller

K. H. Lundmark

W. M. Parker

Vice President-Operation

Assistant Vice President-Operating Administration
Director-Operating Management Controls
Supervisor-Operating Performance Reports
Director-Operations Planning
Assistant Director-Operations Planning Engineering
Manager-Operations Planning Engineering
Manager-Terminal Planning
Senior Operations Planning Engineer
Senior Operations Planning Engineer
Senior Operations Planning Engineer
Manager-Operating Coordination
Senior Operations Planning Engineer
Senior Operations Planning Engineer
Manager-Terminal Planning
Manager-Operations Analysis
Manager-Operations Planning
Senior Operations Planning Engineer
Director-Operations Planning Coordination
Administrative Assistant
Manager-Safety
Assistant Manager-Safety
Director-Freight Claims & Prevention
Manager-Freight Claims (Buffalo)
Assistant Manager-Freight Claims (Buffalo)
Assistant Manager-Freight Claims (Buffalo)
Assistant Manager-Freight Claims (Buffalo)
Assistant Manager-Freight Claims (Buffalo)
Manager-Freight Claims Systems (Buffalo)
Manager-Damage Analysis
Manager-Field Forces (Buffalo)

R. W. Orr
L. F. McLaughlin
J. O. Fulton, Jr.
J. A. Wetzel
D. E. Pergrin
J. F. Brower
W. A. Schoelwer
F. H. Dugan
H. E. Redding
W. C. Rockey
J. J. Delaney
M. L. Holland
J. C. Miller
R. L. McMurtrie
R. H. Nadel
C. F. Schumann
W. J. Baetz
W. R. Gunter
J. F. Holland
J. A. Bonelli
W. V. Hayes
L. F. Battaglia
R. E. Feeley
N. R. Berner
W. L. Campbell
J. W. D'Orlando
R. A. Formella
H. W. Jones
S. Wenzer
D. B. Fleming, Jr.

Vice President-Operation

Assistant Vice President-Operating Administration

Director-Industrial Engineering

Senior Staff Industrial Engineer

Staff Industrial Engineer

Staff Industrial Engineer

Staff Industrial Engineer

Manager-Contract Administration

Senior Staff Industrial Engineer

Staff Industrial Engineer (Chicago)

Staff Industrial Engineer (Detroit)

Staff Industrial Engineer (Indianapolis)

Staff Industrial Engineer (New Haven)

Staff Industrial Engineer

Staff Industrial Engineer (Pittsburgh)

Manager-Industrial Engineering (Altoona)

J. H. Hildenbiddle, Jr.

E. J. Sierleja

E. L. Clausing

C. H. Davis, Jr.

R. L. Stevens

R. W. Horstman

L. E. Ward

R. A. Wisthuff

R. F. Borsos

J. F. Partridge

J. T. Cooper

H. G. Ramp, Jr.

C. R. Holley

M. J. McEvoy

Vice President-Operation

Assistant Vice President-Mail & TrailVan Services

Director-TrailVan Services

Director-Mail Service

- Manager-Mail Service (Chicago)
- Manager-Mail Service (Cleveland)
- Manager-Mail Service (New York)
- Manager-Mail Service (Boston)
- Manager-Mail Service

Director-Intermodal Operations

Director-Intermodal Terminals

Assistant Vice President-Yards & Terminals

Director-Yard Operation

Director-Automotive Terminals

- Manager-Automotive Terminals (Detroit)
- Manager-Automotive Terminals
- Manager-Automotive Terminals (Pittsburgh)
- Manager-Automotive Terminals (Selkirk)

Director-Flexi-Flo Terminals

Director-Security

Manager-Security Operation

Manager-Environmental Control

Manager-Special Investigations

Manager-Security Program Evaluation

Manager-Security Administration

- Superintendent-Police (Chicago)
- Superintendent-Police (New Haven)
- Superintendent-Police (Detroit)
- Superintendent-Police (Indianapolis)
- Superintendent-Police (New York)
- Superintendent-Police
- Superintendent-Police (Pittsburgh)

W. F. Kirk

W. C. Allen

H. D. Sipe

L. F. Carroll

J. E. Garvin

A. A. Turtoro

R. Devlin

K. J. Bobek

W. J. Grabske

R. L. Stoops

J. H. Sharp

J. N. Page

D. R. Stone

R. A. Mazza

J. F. Mizzi

P. L. Green

J. L. Hoy

G. P. Turner

D. L. Nelson

D. Palladino

F. L. Manganaro

R. P. Hartley

J. A. Phelan

W. F. Meeker

A. G. Morgan

V. B. Curran

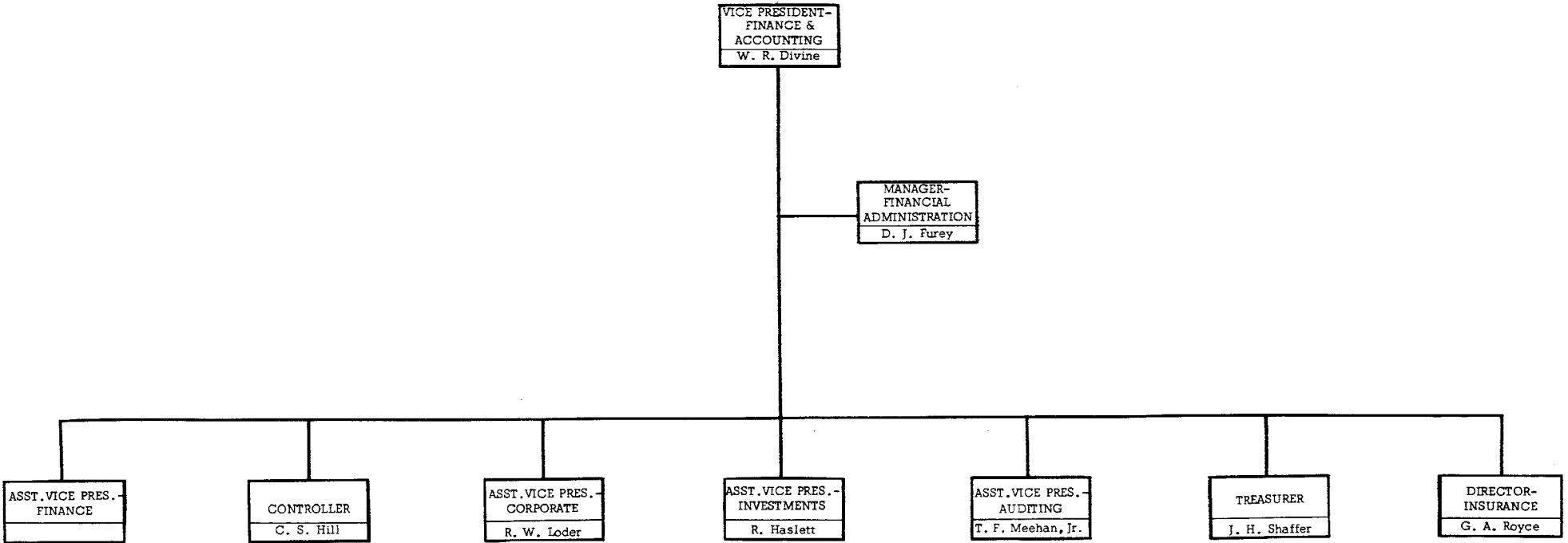
G. H. Mahoney

G. W. Hoffman

J. A. Farrell

H. J. Higgins

H. M. Ruble



Vice President-Finance & Accounting
Assistant Vice President-Finance
Assistant Treasurer-Corporate Investments
Senior Financial Analyst
Analyst-Special Studies
Director-Office Services & Reproduction
Manager-Reproduction
Assistant Vice President-Investments
Manager-Securities
Assistant Vice President-Corporate
Director-Corporate Financing
Manager-Financing Plans
Manager-Financing Administration
Assistant Vice President-Auditing
Manager-Corporate & Contract Audits
Supervisor-Corporate Audits
Manager-Inventory Audits
Manager-Station Audits & Training
Manager-Regional Audits
Supervisor-Special Audits
Supervisor-Special Audits
Treasurer
Assistant Treasurer
Manager-Cash Accounts
Manager-Subsidiary Cash Accounts
Registrar of Bonds
Manager-Bond Transfers
Assistant Treasurer
Director-Insurance
Assistant Director-Insurance
Manager-Financial Administration

W. R. Divine

D. M. Kirby
A. L. Bowles
J. B. Pili
R. Haslett
F. B. Lyons
R. W. Loder
T. A. Verlander, Jr.
C. L. Rugart
J. J. Callahan
T. F. Meehan
T. P. Reardon
F. G. Pelz
A. M. McQueen
J. F. Herska
H. M. Rose, Jr.
T. F. Robinson
G. C. Walsh
J. H. Shaffer
R. C. Lepley
P. F. Nowlan
E. H. Hafner, Jr.
J. V. Pollack
W. W. Montgomery
W. R. Gore
G. A. Royce
J. J. Eberle, Jr.
D. J. Furey

Vice President-Finance & Accounting
Controller

Director-General Accounting
 Manager-Corporate Accounting
 Supervisor-Corporate Accounting
 Manager-Property Accounting
 Roadway Accounting Manager
 Equipment Accounting Manager
 Manager-Real Estate Accounting
 Manager-Contract Services
 Supervisor-Contract Accounting
 Supervisor-Material Accounting Coordination
Director-Revenue Accounting
 Corporate Economist
 Manager-General Freight Accounting
 Manager-Freight Accounting
 Manager-Freight Accounting (Detroit)
 Assistant Manager Freight Accounting (Detroit)
 Manager-Freight Accounting Services
 Supervisor-Revenue Accounting Research
 Manager-General Billing & Collections
 Manager-Freight Billing Operations
 Manager-Freight Billing Procedures
 Manager-Credit & Collections
 Manager-Customer Accounting Center (Chicago)
 Manager-Customer Accounting Center (Detroit)
 Manager-Customer Accounting Center (Indianapolis)
 Manager-Customer Accounting Center (New Haven)
 Manager-Customer Accounting Center (New York)
 Manager-Customer Accounting Center (Philadelphia)
 Manager-Customer Accounting Center (Pittsburgh)
 Manager-General Passenger Accounting
 Supervisor-Revenue Accounting Administration

C. S. Hill
N. J. Hull
R. W. Thomas
T. J. Ciampi
W. B. Myers
P. R. Holmes
D. M. Confer
S. M. Cebulka
W. C. Moll
T. G. Moore
A. J. Hurst, Jr.
R. S. Bergey
F. N. Sass
L. W. Peters
C. R. Tompkins
F. D. Brill
W. J. Toeppe
N. J. Benninghove, Jr.
W. W. Gluyes
J. E. Green
J. P. Tarpey
F. M. Stark
R. E. Semerad
W. D. Brenner
L. N. Hoover, Jr.
W. F. Wertz
J. A. Ruotolo
S. M. Vasek
P. P. Christy
E. G. Drogowski
J. Schilling, Jr.
J. A. Goebel

Vice President-Finance & Accounting
Controller

Director-Personnel Accounting & Employee Benefits

Manager-Employee Benefits

Supervisor-Benefit Information

Manager-Personnel Accounting

Payroll Manager

Manager-Personnel Accounting Practices

Director-Managerial Accounting Services

Manager-Accounting Services Planning

Regional Controller-Special Studies

Director-Car Accounting

Manager-Car Accounting Operations

Manager-Car Accounting Administration

Director-Budgetary Administration

Manager-Budgetary Analysis

Manager-Transportation Budgets

Manager-Engineering Budgets

Manager-Consolidations & General Expenses

Manager-Capital Budgets

Manager-Equipment Budgets

Director-Corporate Reports & Consolidations

Assistant Director-Corporate Reports & Consolidations

Manager-Consolidation Reports

Manager-Management Reporting & Analysis

C. A. Stiteler

E. R. Harper

R. J. Lawser

L. E. Hess

H. E. Truitte

N. J. Nawn

C. Comly III

W. C. Diamond

J. J. Alego

A. C. Weamer

R. A. McGuire

N. Kennedy

E. R. Varalli

J. T. Robertson

J. F. Kane

J. J. Hegarty

L. J. Buchser

J. J. Dawson

J. P. Marko

J. F. Sheehan

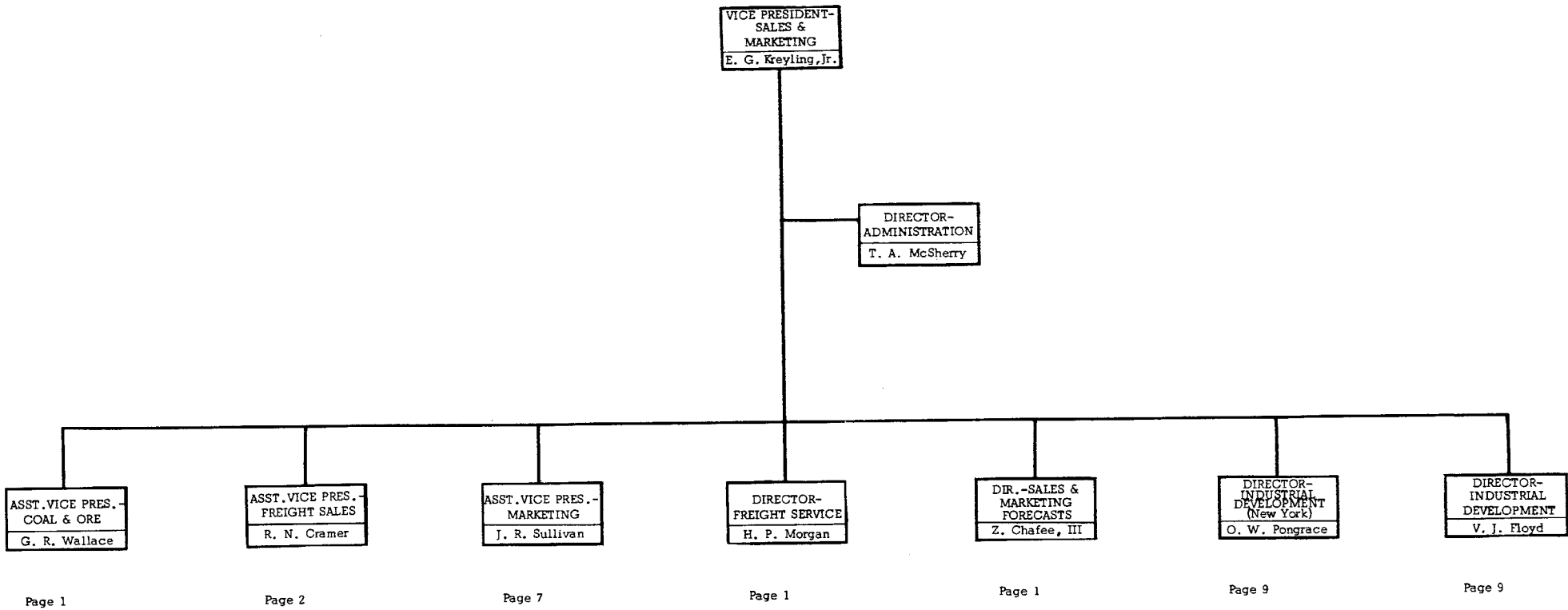
J. R. Rubolino

Vice President-Finance & Accounting
Controller

Manager-Accounting Operations (Chicago)
Supervisor-General Accounting (Chicago)
Manager-Accounting Operations (Detroit)
Supervisor-General Accounting (Detroit)
Manager-Accounting Operations (Indianapolis)
Supervisor-General Accounting (Indianapolis)
Manager-Accounting Operations (New Haven)
Supervisor-General Accounting (New Haven)
Manager-Accounting Operations
Supervisor-General Accounting
Manager-Accounting Operations (Pittsburgh)
Supervisor-General Accounting (Pittsburgh)

R. P. Wille
E. W. Gladziszewski
G. J. Jacks

J. J. Davey
W. H. Patterson
J. P. O'Sullivan
E. F. Sullivan
S. D. Hastings
J. J. O'Neill
G. B. Fink
R. T. Brown



Vice President-Sales & Marketing
 Director-Freight Services
 Manager-Transportation Information Center
 Director-Sales & Marketing Forecasts
 Director-Administration
 Manager-Staff Services
 Manager-Budget & Control
 Administrative Assistant
 Assistant Vice President-Coal & Ore
 Coal & Ore Sales Manager
 Director-Coal & Ore Sales
 Assistant Director-Coal & Ore Sales
 Coal Sales Manager (New York)
 Coal Sales Manager (New York)
 Coal Sales Manager (Philadelphia)
 Coal Sales Manager (Pittsburgh)
 Assistant Director-Coal & Ore Sales
 Coal Sales Manager (Chicago)
 Coal Sales Manager (Cincinnati)
 Coal Sales Manager (Detroit)
 Coal Sales Manager (St. Louis)
 Coal & Ore Sales Manager (Cleveland)
 Director-Coal & Ore Pricing
 Assistant Director-Coal & Ore Pricing
 Manager-Coal & Ore Pricing
 Manager-Coal & Ore Pricing
 Director-Coal & Ore Development Services
 Assistant Director-Coal Development
 Chief Mining Engineer (Pittsburgh)
 Assistant Director-Coal & Ore Services
 Manager-Coal & Ore Services
 Manager-Coal & Ore Services

E. G. Kreyling
H. P. Morgan
E. G. Cadugan
Z. Chafee III
T. A. McSherry
O. P. Varnell
F. C. Lally
J. W. Graham
G. R. Wallace
J. P. Royston
C. H. Wolfinger
R. W. Wilkins
J. P. Bannon
H. J. Wharton
E. H. Furst
W. R. Haynes
J. D. Gunther
W. B. Neal
W. S. Haverkamp
H. L. Shepherd
W. D. Shell
D. W. Korn
J. T. Bodell
F. R. Weis
G. J. Betzler
M. J. Dooley
J. D. Sutton
R. D. Snouffer
E. B. Boden
W. L. Lloyd
F. M. Day
W. E. Moffet

Vice President-Sales & Marketing

Assistant Vice President-Freight Sales

Director-Freight Sales-Staff

Assistant Director-TrailVan Sales

Manager-TrailVan Sales-Staff

Freight Sales Manager-Perishable Traffic

Freight Sales Manager-Flexi-Flo Services

Freight Sales Manager-Government Traffic

Freight Sales Manager-Grain & Grain Products

Assistant Director-International Sales

Manager-International Sales-Staff

Manager-International Sales (Baltimore)

Manager-International Sales (Chicago)

Manager-International Container Sales (Chicago)

Manager-International Sales (Indianapolis)

Manager-International Sales (New York)

Manager-International Sales (New York)

Manager-International Container Sales (New York)

Manager-International Sales

Assistant Director-Freight Service & Special Equipment Allocation

Manager-Freight Services

Manager-Equipment Allocation

Manager-Grain Equipment Allocation

Manager-Freight Sales Administration

Director-National Accounts (New York)

Freight Sales Manager-Metals (New York)

Freight Sales Manager-Metals (New York)

Administrative Assistant

R. N. Cramer

C. R. Drake

F. C. Matey

A. T. Greer III

F. H. Hillgartner

W. J. Maslowski

B. P. O'Connor

J. G. McNamara

G. Shimrak

T. C. Foote, Jr.

W. E. Storf

R. H. Jensen

W. A. Newman

F. J. Slattery

S. J. Marshall

T. J. Garden

F. P. Sherkus

J. W. Horrocks

R. E. Brown, Jr.

L. A. McCabe

J. W. Greve

W. H. Bilz

A. F. Brinks

W. K. Chapman

E. E. Jones

J. R. Smith, Jr.

D. F. Harbaugh

Vice President-Sales & Marketing

Assistant Vice President-Freight Sales

Director-National Accounts (New York)

Freight Sales Manager-Chemicals (New York)
Freight Sales Manager-Chemicals (New York)
Freight Sales Manager-Chemicals (New York)
Freight Sales Manager-Food Products (New York)
Freight Sales Manager-Food Products (New York)
Freight Sales Manager-Merchandise Traffic (New York)
Freight Sales Manager-Paper & Paper Products (New York)
Freight Sales Manager-Paper & Paper Products (New York)
Freight Sales Manager-Paper & Paper Products (New York)
Freight Sales Manager-Beverages (New York)
Freight Sales Manager-Rubber Products (New York)
Freight Sales Manager-Consumer Products (New York)

Regional Sales Manager (Boston)

Sales Manager-Staff (Boston)

Sales Manager-Eastern Canada (Montreal)

Freight Sales Manager (Boston)

Assistant Freight Sales Manager (Boston)

Division Sales Manager (New Haven)

Division Sales Manager (Springfield)

Division Sales Manager (Hartford)

Division Sales Manager (Providence)

Division Sales Manager (Waterbury)

Manager-TrailVan Sales (Boston)

Manager-TrailVan Sales (New Haven)

Manager-Freight Service & Special Equipment (Boston)

I. J. Bader
R. K. Carroll
A. L. Horstman
J. G. Sweet
J. R. Brakebill
T. F. K. Turner
R. C. Cohea
K. M. Fraser
J. D. Boylan
C. W. Remer
T. P. Halligan
H. L. Bullock
J. T. Gurren
C. E. Ragland
P. M. Hurley
W. H. Leeman
W. H. White
F. R. Manix
J. C. Maurer, Jr.
R. F. McCoy
W. S. Pane
R. J. Hunt
F. N. Powers
A. M. Brown
W. C. Gardner
W. D. Callan

Vice President-Sales & Marketing

Assistant Vice President-Freight Sales

Regional Sales Manager (Chicago)

Freight Sales Manager (Chicago)

Assistant Freight Sales Manager (Chicago)

Division Sales Manager (Ft. Wayne)

Division Sales Manager (Kankakee)

Division Sales Manager (South Bend)

Freight Sales Manager (Chicago)

Freight Sales Manager (IHB-Chicago)

Freight Sales Manager (Cleveland)

Division Sales Manager (Akron)

Division Sales Manager (Cleveland)

Division Sales Manager (Toledo)

TrailVan Sales Manager (Chicago)

Manager-TrailVan Sales (Chicago)

Manager-TrailVan Sales (Chicago)

Manager-TrailVan Sales (Cleveland)

Manager-Freight Service & Special Equipment (Chicago)

Regional Sales Manager (Cincinnati)

Freight Sales Manager (Cincinnati)

Division Sales Manager (Cincinnati)

Division Sales Manager (Columbus)

Division Sales Manager (Dayton)

Division Sales Manager (Indianapolis)

Division Sales Manager (Charleston)

Division Sales Manager (Evansville)

Division Sales Manager (Peoria)

Manager-TrailVan Sales (Cincinnati)

Manager-Freight Service & Special Equipment (Cincinnati)

J. B. DiCarlo

L. J. Logsdon

C. H. Finney

K. F. Konz

R. V. Marinier

R. R. Klevorn

R. W. Nicholas

F. J. Lühring

J. O. Flaherty

P. C. McCormick

R. D. Esterline

C. R. Heinisch

C. P. Rahn

T. J. Cosgrove

R. E. Marsh

D. A. Seiler

T. L. Head

J. E. Norwood

J. S. Sheahan

W. B. Milligan

B. E. Brumett

L. C. Callender

L. H. Lee

W. A. Cole

J. C. Emig

J. C. White

L. W. Fritsche

L. N. McCraven

Vice President-Sales & Marketing

Assistant Vice President-Freight Sales

Regional Sales Manager (Detroit)

Director-Automotive Sales (Detroit)

Freight Sales Manager-Automotive (Detroit)

Freight Sales Manager-Automotive (Detroit)

Freight Sales Manager-Automotive (Detroit)

Freight Sales Manager (Detroit)

Division Sales Manager (Detroit)

Division Sales Manager (Kalamazoo)

Division Sales Manager (Saginaw)

Manager-TrailVan Sales (Detroit)

Manager-Freight Service & Special Equipment (Detroit)

Regional Sales Manager (New York)

Freight Sales Manager (New York)

Assistant Freight Sales Manager (New York)

Division Sales Manager (New York)

Division Perishable Sales Manager (New York)

Assistant Freight Sales Manager (New York)

Division Sales Manager (New York)

Division Sales Manager (Newark)

Freight Sales Manager (Buffalo)

Sales Manager-Central Canada (Toronto)

Division Sales Manager (Albany)

Division Sales Manager (Buffalo)

Division Sales Manager (Rochester)

Division Sales Manager (Syracuse)

TrailVan Sales Manager (New York)

Manager-TrailVan Sales (New York)

Manager-TrailVan Sales (Syracuse)

Manager-Freight Service & Special Equipment (New York)

T. E. Reynolds
F. D. Jackson
O. F. Bonnell
J. F. Degges
A. W. Hall
J. C. Hassett
R. D. Rines
W. C. Corbin
J. Traskie
A. E. Finfrock
W. F. Olson
R. G. Meldahl
J. W. Ringwood
J. D. Murphy
C. F. Elmore
S. J. Stinson
N. R. Cosentino
E. J. Zarriello
D. G. Jaeger
H. L. Gordon
P. J. Keleher
J. A. R. Smith
J. B. O'Connor
N. A. DeLaroche
J. R. Davis
P. C. Yeager
C. F. Browning
M. K. Rankin
W. A. George

Vice President-Sales & Marketing

Assistant Vice President-Freight Sales

Regional Sales Manager

Southeastern Sales Manager (Atlanta)

Freight Sales Manager

Division Sales Manager (Harrisburg)

Division Sales Manager

Freight Sales Manager

Division Sales Manager (Baltimore)

Division Sales Manager (Norfolk)

Division Sales Manager (Wilmington)

Manager-TrailVan Sales

Manager-Freight Service & Special Equipment

Regional Sales Manager (Pittsburgh)

Freight Sales Manager (Pittsburgh)

Freight Sales Manager (Pittsburgh)

Assistant Freight Sales Manager (Pittsburgh)

Division Sales Manager (Pittsburgh)

Division Sales Manager (Pittsburgh)

Division Sales Manager (Wheeling)

Division Sales Manager (Youngstown)

Manager-Freight Service & Special Equipment (Pittsburgh)

Regional Sales Manager (St. Louis)

Freight Sales Manager (St. Louis)

Division Sales Manager (St. Louis)

Manager-TrailVan Sales (St. Louis)

Pacific Coast Freight Sales Manager (San Francisco)

Manager-TrailVan Sales (San Francisco)

W. P. Eckfeldt

B. N. Hughes

W. K. Howard

R. G. Lange

R. A. Sumerfield

F. K. Price

W. B. Zell

H. E. Simmons

A. S. Mullin

C. W. Warren

G. J. McDonald

H. H. Ramsay

A. A. Cicenias

G. E. Harrington

S. C. Gibson

S. A. Rowan

R. M. Tillotson

I. L. Ivy

V. B. Henderson

S. R. Schroder

J. E. Little

C. L. Stainbrook

W. J. Von Der Schmidt

J. A. Robertson

P. A. Butler

E. J. Erickson

Vice President-Sales & Marketing
Assistant Vice President-Marketing
Director-Pricing

Assistant Director-Pricing

Manager-Pricing)
Manager-Pricing)) Metals, Metal Scrap
Manager-Pricing)
Manager-Pricing)) Grain & Grain Products
Manager-Pricing)
Manager-Pricing)) Accessorial Services, Miscellaneous
Manager-Pricing)
Manager-Pricing)) Petroleum & Chemicals

Assistant Director-Pricing

Manager-Pricing)
Manager-Pricing)) Consumer Goods, Freight Forwarders
Manager-Pricing)
Manager-Pricing)) TOFC/COFC
Manager-Pricing)
Manager-Pricing)) Automotive, Paper, Appliances
Manager-Pricing)
Manager-Pricing)) Bulk Commodities

Assistant Director-Pricing Services

Manager-Divisions

Manager-Tariff Publications

Assistant Manager-Tariff Publications

Manager-Commerce

Manager-Pricing Services (Chicago)
Manager-Pricing Services (New York)
Manager-Pricing Services (Pittsburgh)
Manager-Pricing Services (Boston)
Manager-Pricing Services (Cincinnati)
Manager-Pricing Services (Cleveland)
Manager-Pricing Services (Detroit)
Manager-Pricing Services
Manager-Pricing Services (St. Louis)

Assistant Director-Pricing-Staff

Manager-Pricing Research

J. R. Sullivan
J. E. Musslewhite
J. D. Finley
R. F. Scanlon
G. C. Campbell
E. L. Wogen
T. E. Sellinger
R. H. Seip
R. B. Brown
F. G. Tatnall, Jr.
C. S. Van Gunten
G. J. Muth
M. L. Kelly
R. W. Lynch
J. J. Stanley
W. J. Bailey
W. E. Sheehan
J. F. Alexander
A. J. Bubello
C. E. Wallquist
J. C. Bonney
A. B. Smith
G. L. Ottinger
N. A. DeLongis
H. E. Pifer, Jr.
E. J. O'Connor
T. E. Rohan
A. P. Grellet
R. J. Ising
J. J. Trifero
G. F. Conley
W. H. Ehrhardt
G. B. Cheffins
J. H. Huddleston
P. E. Purcell
B. T. Hyberg
E. C. Christ

Vice President-Sales & Marketing

Assistant Vice President-Marketing

Director-Market Planning & Research

Assistant Director-Market Research

Manager-Market Research

Assistant Manager-Marketing Information Services

Assistant Manager-Economic Research

Manager-Marketing Data Control

Manager-Freight Equipment Research

Manager-Freight Equipment Planning

Assistant Manager-Freight Equipment Planning

Manager-Freight Service Planning

Assistant Manager-Freight Service Planning

Assistant Manager-Freight Service Planning

Assistant Director-Market Planning

Manager-Market Development-Automotive

Assistant Manager-Market Development-Automotive

Manager-Market Development-Consumer Goods & Waste Material

Manager-Market Development-Grain

Assistant Manager-Market Development-Grain

Manager-Market Development-Intermodal Services

Assistant Manager-Market Development-International

Manager-Market Development-Chemicals

Manager-Market Development-Construction

Manager-Market Development-Metals

Assistant Manager-Market Development-Paper

Assistant Manager-Market Development-Flexi Flo

Administrative Assistant

T. B. Graves

P. H. Moore

R. G. Kennedy III

R. E. Mortensen

S. M. Katz

H. Peterson

R. M. Bell

R. P. Chaufournier

D. H. Callaghan

D. A. Washburn

W. F. Wulforth

J. L. Chester

P. W. Olson

H. M. Stacy

M. S. Sanders

W. E. Alexander

D. F. Rehl

K. L. MacKavanaugh

W. R. Brooks

J. M. Munro

J. J. Grocki

R. T. Schoonmaker

L. P. Tori, Jr.

B. M. Reagan

R. S. Ingram

F. C. Koller

Vice President-Sales & Marketing

Director-Industrial Development (New York)
 Manager-Industrial Development-Technical Services (New York)
 Manager-Industrial Development (Chicago)
 Manager-Industrial Development (Detroit)
 Manager-Industrial Development (New York)
 Manager-Industrial Development (Boston)
 Manager-Industrial Development (Claveland)
 Manager-Industrial Development (Syracuse)
Director-Industrial Development
 Manager-Industrial Development-Staff
 Manager-Industrial Development (New York)
 Manager-Industrial Development
 Manager-Industrial Development (Pittsburgh)
 Manager-Industrial Development (Baltimore)
 Manager-Industrial Development (Cincinnati)
 Manager-Industrial Development (Indianapolis)

O. W. Pongrace
J. T. Orsborn
G. E. Behn
J. C. Rideout
W. J. Marshall
J. G. Kathro
S. F. McConnell
R. S. Podas
V. J. Floyd
R. A. Teichman, Jr.
F. J. Hasson
A. J. Hafner
J. T. Matthews
R. G. Sim
W. H. Wentz
V. H. Louthan

Vice President-Staff

Assistant Vice President-Planning Coordination
Senior Planning Consultant
Planning Consultant
Senior Planning Analyst
Senior Planning Analyst
Senior Planning Analyst
Manager-Transportation Research
Transportation Research Analyst
Senior Planning Consultant
Planning Consultant
Director-Cost & Profit Analysis
Assistant Director-Cost Research
Assistant Director-Freight Cost Analysis
Assistant Director-Passenger Cost Analysis

J. A. McDonald
J. M. Ostrow
J. L. Forrester
J. C. Sperry
M. H. Miller
A. L. Shivery
J. R. Stanek
J. T. Evans
T. M. Scott
H. L. Wood
R. M. Rieser
V. A. Cano
T. M. Curran
F. F. Coates
A. F. Hartsell, Jr.

Vice President-Staff

Assistant Vice President-Systems Development
Manager-Systems Development Administration
Director-Systems Development Planning & Support
 Manager-Systems Development Planning
 Business Systems Consultant
 Project Manager
 Advisory Systems Analyst
 Manager-Project Control
 Manager-Management Sciences Development
 Manager-Analyses Programs
 Assistant Manager-Analyses Programs
 Manager-Technical Services
 Advisory Computer Analyst
Director-Communications Services
 Manager-Communications Plans & Operation
 Manager-Communications Facilities
 Manager-Data Communications & Monitoring
 Advisory Systems Analyst
 Advisory Systems Analyst
 Advisory Computer Analyst
 Advisory Computer Analyst

M. D. Sims
W. W. Johnson
S. J. Orlando
R. L. Marky
V. G. Robinson
F. W. Lach
T. W. Kelly
M. J. Reape, Jr.
E. H. Rigg
C. T. Yocum
V. L. Savage
R. A. Rand
N. A. Walker
R. C. Karwatt
L. J. Ritter
B. Freeman
E. F. Schuler
J. P. Dick
A. A. Mackensie
J. A. Jensen
G. B. McCall

Vice President-Staff

Assistant Vice President-Systems Development

Director-Data Center Services

Manager-Data Center Services

Manager-System Data Center

Assistant Manager-Data Processing

Assistant Manager-Production Control

Senior Manager-Data Center (Detroit)

Manager-Data Center (New York)

Manager-Data Center (Altoona)

Manager-Data Center (Buffalo)

Manager-Data Center (Indianapolis)

Manager-Data Center (New Haven)

Manager-Data Center (Pittsburgh)

Director-Business Systems (Special Projects)

Manager-Graphics & Forms Management

Project Manager-(Materials)

Project Manager-(ME/MW)

Project Coordinator

Advisory Systems Analyst

Advisory Systems Analyst

Advisory Systems Analyst

Project Manager (Manufacturing-Heavy Repairs) (Altoona)

Advisory Systems Analyst (Altoona)

Advisory Systems Analyst

Business Systems Consultant

Project Manager-Car Services

Advisory Computer Analyst

T. P. Jensen

E. J. Hoffman

T. F. Dockray

J. F. Dixon, Jr.

J. A. Mehok

L. A. Moore

J. W. Freese

S. F. Lupica

W. J. Purcell

J. F. Barry

G. Syat

T. T. Cross

G. A. Kessler

J. J. Hoover

J. T. Caruso

A. C. Nagele

W. M. Gardiner

J. M. Divack

S. Frankevich

R. A. Trickle

L. P. Emery

E. F. Paul

H. W. F. Bocher

W. L. McFarland

E. J. T. Long

I. N. Tyson

Vice President-Staff

Assistant Vice President-Systems Development

Director-Business Systems (Commercial Systems)

Senior Business Systems Consultant

Manager-Business Systems-(Financial)

Advisory Systems Analyst (Detroit)

Project Manager

Project Manager-Revenue

Advisory Systems Analyst

Advisory Systems Analyst

Manager-Business Systems-(Revenue)

Advisory Systems Analyst (Detroit)

Coordinator-Project Planning & Control

Project Manager-Stations

Project Manager-(Sales, Marketing & Freight Claims)

Manager-Applications Support

Director-Business Systems (Operations Systems)

Senior Business Systems Consultant

Manager-Data Origination

Assistant Manager-Data Origination

Assistant Manager-Data Origination Car Reporting

Manager-Files & Tables

Manager-Field Support & Training

Project Manager-Transportation

Manager-Business Systems (Operations)

Advisory Systems Analyst

Advisory Systems Analyst

Advisory Computer Analyst

Advisory Computer Analyst

J. R. Barr

C. D. Edwards

R. M. Duquette

T. L. Cawood

M. E. Cauley

J. J. Everett

R. E. Whitehouse

J. E. Runyen

R. J. Van Sciver

A. G. Giorio

E. J. Carlin

A. E. Burbage

G. H. Dascher, Jr.

M. G. Hoover

J. S. Greene

J. J. Agnew

R. J. Murphy

J. J. Usiatynski

J. C. Henry

J. R. Durand

F. W. Long

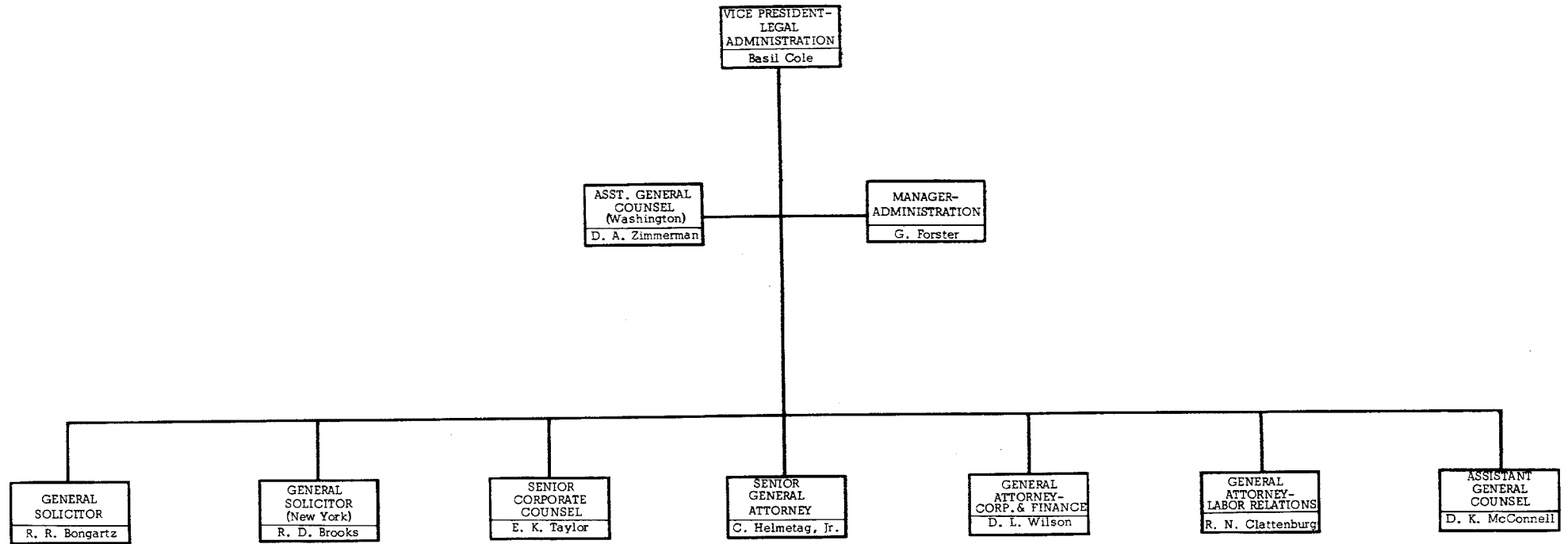
L. P. Froio

S. H. Rittberg

O. S. Laakso

E. B. Linaugh

V. J. Sutcliffe



Vice President-Legal Administration
General Solicitor
General Attorney-Commerce
Assistant General Counsel
Assistant General Counsel
Assistant General Counsel
Assistant General Counsel
Assistant General Counsel
Assistant General Solicitor (New York)
Assistant General Solicitor
General Solicitor (New York)
Assistant General Solicitor (New York)
Senior Corporate Attorney
Assistant General Counsel
Assistant General Counsel
Assistant General Counsel
Attorney (New York)
General Attorney-Corporate & Finance
General Attorney-Labor Relations
Assistant General Counsel
Assistant General Counsel (Reorganization)
Assistant General Counsel (Washington)
Manager-Administration

Basil Cole
R. R. Bongartz
R. J. Murphy
D. A. Brinkworth
P. R. Duke
W. R. Bready III
C. E. Mechem
W. F. Zinger
J. A. Daily
H. J. Latta, Jr.
R. D. Brooks
G. J. Schwarz
E. K. Taylor
W. C. Leiper
J. N. Mullen
M. P. Allen (Miss)
B. S. Stokes (Mrs.)
D. L. Wilson
R. N. Clattenburg
H. M. Wells
D. K. McConnell
D. A. Zimmerman
G. Forster

Vice President-Legal Administration

Senior General Attorney

General Attorney

Assistant General Counsel

Assistant General Counsel

General Attorney (Chicago)

Assistant General Counsel (Chicago)

Assistant General Counsel (Chicago)

Assistant General Attorney (Indianapolis)

Assistant General Attorney (Chicago)

General Attorney (Chicago)

General Attorney (Cleveland)

Assistant General Attorney (Cleveland)

Assistant General Attorney (Cleveland)

Assistant General Attorney (Cleveland)

Assistant General Attorney (Cleveland)

General Attorney (Detroit)

Assistant General Attorney (Detroit)

General Attorney (New York)

Associate General Attorney (New York)

Assistant General Attorney (New York)

Assistant General Attorney (New York)

Assistant General Attorney (New York)

Assistant General Attorney (New York)

Assistant General Attorney (New York)

Assistant General Attorney (New York)

Assistant General Attorney (New York)

Attorney (New York)

General Attorney (Pittsburgh)

Assistant General Counsel (Pittsburgh)

Assistant General Counsel (Pittsburgh)

Assistant General Attorney (Boston)

Assistant General Attorney (Boston)

Assistant General Attorney (New Haven)

Assistant General Attorney (New Haven)

C. Helmetag, Jr.
L. W. Wickes
R. R. Artz
S. S. Frazee, Jr.
R. H. Bierma
A. L. Foster
E. R. Gustafson
J. A. Stocker
A. M. Kelly (Miss)
R. O. Olson
G. K. Nelson
J. F. Dolan
A. L. Price
P. C. Hopkins
T. R. Skulina
P. E. Hackett

R. M. Peet
J. L. More
E. J. Murphy
J. H. Shapiro
H. W. Herbert
W. R. Johnston
W. P. Jones
W. F. McGinn
K. P. Fremont
W. D. Stewart
E. E. Anderson, Jr.
A. F. Mahler
R. J. Ferriter
D. W. Walsh
J. D. Kernan
G. E. Gill

Vice President-Legal Administration

Senior General Attorney

General Claims Attorney (New York)

Assistant to General Claims Attorney (New York)

Chief Claim Agent (Chicago)

Assistant Chief Claim Agent (Chicago)

Chief Claim Agent (Cleveland)

Assistant Chief Claim Agent (Cleveland)

Assistant Chief Claim Agent (Detroit)

Chief Claim Agent (New York)

Assistant Chief Claim Agent (New York)

Chief Claim Agent (Philadelphia)

Assistant Chief Claim Agent (Philadelphia)

Chief Claim Agent (Pittsburgh)

J. T. Lynch

W. E. Elliott

R. I. Hunter

R. P. Herkes

R. A. Peronne

R. J. Kelly

R. P. O'Connell

J. A. Spooner

W. J. Fish

A. J. Anderson

G. E. Reed

H. H. Hall

Vice President-Real Estate & Taxes (New York)
Assistant Vice President-Real Estate (New York)
Assistant Vice President-Real Estate
Assistant Vice President-Real Estate
Manager-Real Estate-Staff
Manager-Real Estate-Relocation
Manager-Real Estate (Chicago)
Manager-Real Estate (New York)
Manager-Real Estate (Philadelphia)
Manager-Real Estate (Pittsburgh)
Manager-Real Estate (Cincinnati)
Manager-Real Estate (Cleveland)
Manager-Real Estate (Detroit)
Manager-Real Estate (New Haven)
Manager-Real Estate (Syracuse)
Director-Leased Property Administration (New York)
Manager-Buildings (New York)
Assistant Vice President-Taxes
General Tax Counsel
Director-Corporate Tax Administration
Manager-Corporate Taxes
Director-Property Tax Administration
Manager-Property Taxes

S. H. Hellenbrand
F. W. Rovet
H. J. McNally
F. J. Gasparini
R. D. Jordan
W. R. Dunn, Jr.
J. J. Sweeney
C. Nichols, Jr.
J. J. Supon
K. C. Barry
J. E. Sandefur
D. M. Wies
C. W. Maxson
W. R. Bottomley
H. A. Wiedeman
J. J. Flood
H. M. Quinn
W. C. Antoine
F. McEvoy
D. C. Costanzo

W. F. Lahner, Jr.
W. C. Dilworth

Vice President-Public Affairs
Senior Executive Representative (Boston)
Senior Consultant (Boston)
Executive Representative (Washington)
Executive Representative (Washington)
Executive Representative
Manager-Passenger Service Contracts
Executive Representative
Special Representative (Chicago)
Administrative Assistant

A. P. Funkhouser
W. H. Tucker
F. J. Orner
F. G. Darrison
H. A. Shipman

G. C. Jones
J. W. Diffenderfer
W. F. Collins
J. M. Smith

Vice President-Personnel
Director-Organization Planning
Director-Salary Administration
Director-Training
 Manager-Employee Training
 Training Officer
Director-Personnel Administration
 Manager-Employment & Personnel Services
 Personnel Officer
Manager-Research & Administration
Director-Medical Services
 Manager-Medical Administration
 Regional Medical Director (Altoona)
 Assistant Regional Medical Director (Altoona)
 Medical Officer (Altoona)
 Regional Medical Director (Chicago)
 Medical Officer (Chicago)
 Medical Officer
 Division Medical Officer (New York)
 Medical Officer (New York)
 Division Medical Officer (Pittsburgh)
 Division Medical Officer (Baltimore)
 Division Medical Officer (Columbus)
 Division Medical Officer (Indianapolis)

F. L. Kattau
R. W. Shea
W. R. Catching
G. R. Weaver, Jr.
J. S. Stewart
W. R. Cox
S. W. Seeman
H. D. Good
A. H. Schneider
D. J. Lowther
S. J. Cyran
R. E. Koppe
D. W. Bishop
L. W. Dibert
A. P. McNamara
J. D. Thornton
P. Pundy
P. J. Esgro
A. R. Copely
P. C. Reilly
H. G. Ferri
A. J. Cerny
R. J. Freedy
H. B. Hamilton

Vice President-Public Relations

Director-Public Relations

Assistant Director-Public Relations (New Haven)

Manager-Public Relations (Washington)

Manager-Public Relations (Chicago)

Manager-Public Relations (Indianapolis)

Manager-Public Relations (Pittsburgh)

Manager-Editorial Service

Manager-News Bureau

Assistant Manager-News Bureau

Manager-Employee Publications

Manager-Special Projects

Director-Advertising

Administrative Assistant

W. A. Lashley

U. W. Cunitz

R. S. McKernan

J. R. Ewing

J. K. Harvey

F. C. Rhodes

W. E. Baird

S. Resnick

H. A. Gilbert

H. L. Wiand

J. Shallit

R. I. Alotta

R. F. Timbers

H. R. Matlack

Vice President-Labor Relations

Director-Labor Relations

Director-Labor Relations Planning

Director-Labor Relations Planning

Manager-Administration

Manager-Employee Research & Records

Director-Labor Relations

Manager-Labor Relations

Manager-Labor Relations

Manager-Labor Relations

Manager-Labor Relations

Manager-Labor Relations

Manager-Labor Relations

Manager-Labor Relations

Manager-Labor Relations

Manager-Labor Relations

Assistant Manager-Labor Relations

Superintendent-Labor Relations

Superintendent-Labor Relations (Chicago)

Assistant Superintendent-Labor Relations (Chicago)

Assistant Superintendent-Labor Relations

Superintendent-Labor Relations (Cleveland)

Assistant Superintendent-Labor Relations (Cleveland)

Assistant Superintendent-Labor Relations (Toledo)

Assistant Superintendent-Labor Relations (Cleveland)

Superintendent-Labor Relations (Detroit)

Assistant Superintendent-Labor Relations (Detroit)

Assistant Superintendent-Labor Relations (Detroit)

Superintendent-Labor Relations (Indianapolis)

Assistant Superintendent-Labor Relations (Indianapolis)

Assistant Superintendent-Labor Relations (Indianapolis)

Superintendent-Labor Relations

Assistant Superintendent-Labor Relations

Assistant Superintendent-Labor Relations

J. J. Maher

R. Brown

G. F. Daniels

R. E. Swert

W. J. McKnight

C. S. Frazier

N. P. Patterson

G. F. Bent

P. N. Mansfield

T. E. Murphy

T. J. Ryan

T. C. Sheller

S. J. Wilson, Jr.

J. H. Palmer

S. Smyth

N. M. Berner

F. B. McGettigan

J. E. Mason

R. M. Schaible

H. W. Jackson

B. E. Cole

G. C. Ellert

R. J. Baty

J. M. Taylor

J. B. Kuhnle

R. M. Stierwalt

J. A. Rice

E. Gibson

D. H. Goding

R. S. Morgan

W. L. Davidson

W. E. Conrad

G. R. Welsh

Vice President-Labor Relations

Director-Labor Relations

Superintendent-Labor Relations (Pittsburgh)	J. Metil, Jr.
Assistant Superintendent-Labor Relations (Pittsburgh)	J. P. Perkins
Assistant Superintendent-Labor Relations (Pittsburgh)	R. R. Shipyor
Superintendent-Labor Relations (Altoona)	C. R. Niklaus
Assistant Superintendent-Labor Relations (Altoona)	P. J. Kelly
Superintendent-Labor Relations (Buffalo)	W. L. Broelman
Assistant Superintendent-Labor Relations (Buffalo)	D. F. Dillon
Assistant Superintendent-Labor Relations (Buffalo)	J. J. Slowey
Superintendent-Labor Relations (Columbus)	S. D. Dutrow
Assistant Superintendent-Labor Relations (Columbus)	R. R. Howland
Assistant Superintendent-Labor Relations (Columbus)	L. J. Lipps
Superintendent-Labor Relations (Harrisburg)	F. C. Kublic
Assistant Superintendent-Labor Relations (Harrisburg)	B. B. Brooks
Assistant Superintendent-Labor Relations (Harrisburg)	W. J. Mellen
Superintendent-Labor Relations (New Haven)	J. P. Barton
Assistant Superintendent-Labor Relations (New Haven)	A. C. Owen
Assistant Superintendent-Labor Relations (New Haven)	F. J. Stipek
Superintendent-Labor Relations (New York)	J. W. Shuron
Assistant Superintendent-Labor Relations (New York)	R. O'Neill

Vice President-Purchases & Materials
Sales Agent
Administrative Assistant
Director-Purchases
Purchasing Agent
Purchasing Agent
Purchasing Agent
Purchasing Agent (New York)
Chief Material Inspector
Director-Materials
Assistant Director-Materials-System
Assistant Director-Materials-Car
Assistant Director-Materials-Locomotive
Assistant Director-Materials-Maintenance of Way
Manager-Materials (Altoona)
Manager-Materials (Beech Grove)
Manager-Materials (Chicago)
Manager-Materials (Cleveland)
Manager-Materials (New Haven)
Manager-Materials
Manager-Materials (Pittsburgh)

M. P. Richards
J. K. Sherwood
W. A. Case
J. A. Smith
T. E. Aiken
J. A. Angert
J. P. Sherron
G. J. Munderville
F. J. Kotroba
F. A. Zimmerman
J. J. Brown
H. R. Cory, Jr.
K. E. Lowe
H. L. Riser
W. H. Krapf
W. A. Roberts
W. C. Hutchison
R. A. Ehrhardt
E. S. Taylor
D. B. Owens
J. F. Kelly